

# Beaumont Commerce Center Flex/Office Availabilities February 2026



## 5402 - 5460 Beaumont Center Blvd. • Tampa, FL 33634

(Northwest Corner of Hillsborough Avenue and the Veterans Expressway)

SQ. FT.	BLDG.	SUITE	OFFICES/RESTROOMS	LEASE RATE
1,607	5421	615	Reception / 5 Offices / Conference Room	\$16.45* NNN
1,960	5421	655	Reception / Conference Room / Break Room	\$16.45* NNN
4,589	5411	760	Reception / Private Offices / Conf. Room / Break Room / Restrooms	\$16.45* NNN
5,148	5402	103	2,238 Square Feet Office / 2,473 Square Feet Warehouse	\$16.00* NNN
6,677	5431	1110	Reception / Private Offices / Conf. Room / Break Room	\$16.45* NNN

\*All lease rates are based on a 5 year lease term.

*The large Conference/Amenity Center located in Building 5411 is available to all tenants at no charge.*

### Industrial Property Group, Inc.

Licensed Real Estate Broker

2202 N. Westshore Blvd. • Suite 200 • Tampa, FL 33607

[www.ipgcommercialrealty.com](http://www.ipgcommercialrealty.com)



Owned and Managed by  
Arden Logistics Parks



FOR MORE INFORMATION CONTACT:

**CHRISTINA PETTI**

Cell: 813.245.1246

[christina@ipgcommercialrealty.com](mailto:christina@ipgcommercialrealty.com)

**JOHN AYERS**

Cell: 813.690.6539

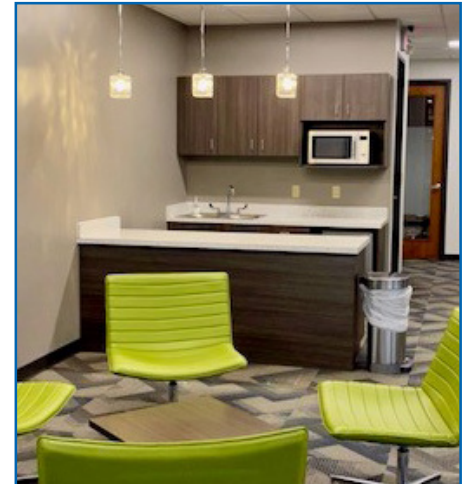
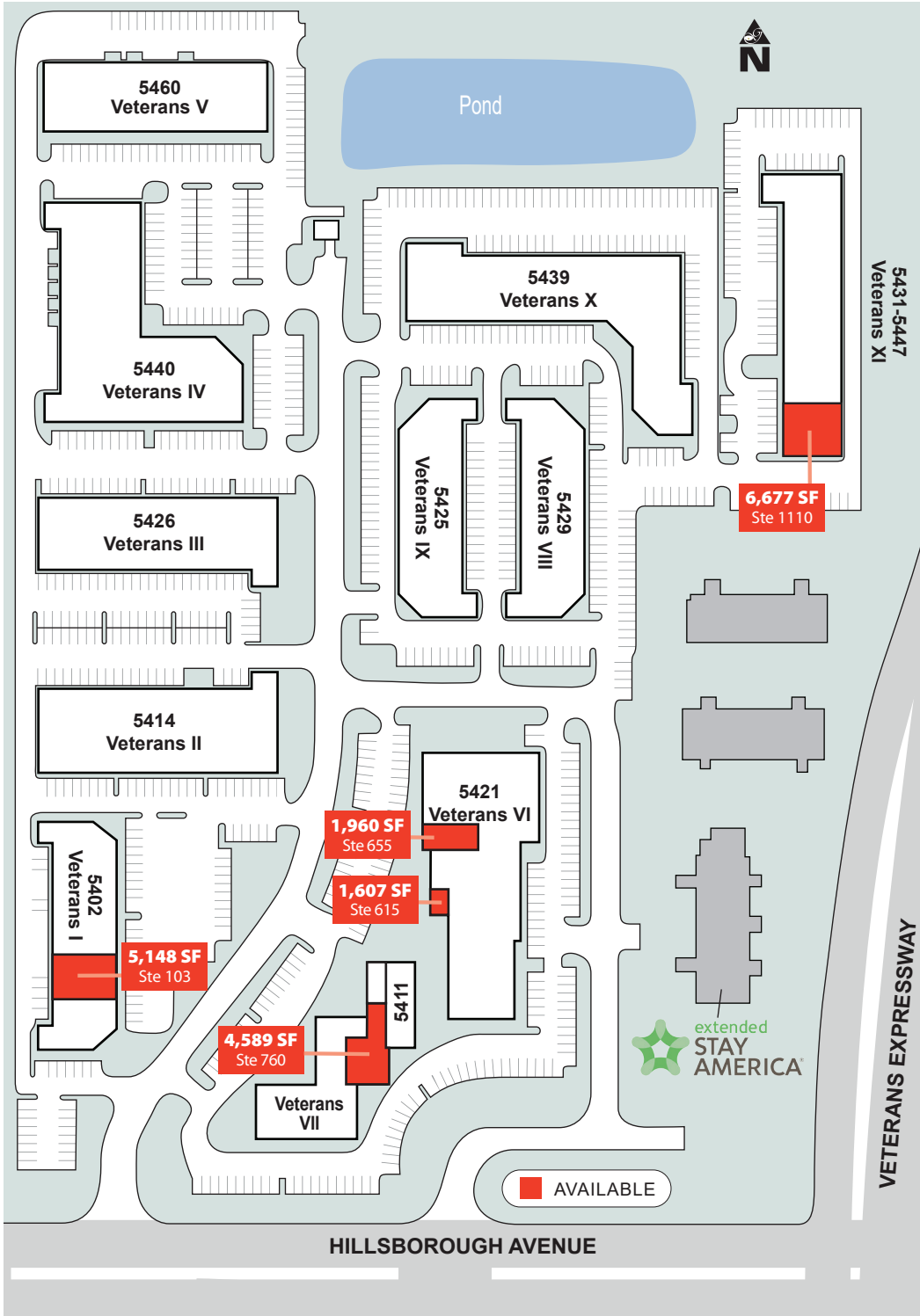
[john@ipgcommercialrealty.com](mailto:john@ipgcommercialrealty.com)

No warranty or representation, expressed or implied, is made as to the accuracy of the information contained herein, and same is submitted subject to errors, omissions, change of price, rental or other conditions, withdrawal without notice, and to any special listing conditions imposed by our principals.

# Beaumont Commerce Center

## Site Plan / Office Availabilities

### February 2026



Amenities Center Lobby

FOR MORE INFORMATION CONTACT:  
**CHRISTINA PETTI**  
 Cell: 813.245.1246  
[christina@ipgcommercialrealty.com](mailto:christina@ipgcommercialrealty.com)

**JOHN AYERS**  
 Cell: 813.690.6539  
[john@ipgcommercialrealty.com](mailto:john@ipgcommercialrealty.com)



Owned and Managed by  
**Arden Logistics Parks**

**Industrial Property Group, Inc.**

Licensed Real Estate Broker

2202 N. Westshore Blvd. • Suite 200 • Tampa, FL 33607

[www.ipgcommercialrealty.com](http://www.ipgcommercialrealty.com)

No warranty or representation, expressed or implied, is made as to the accuracy of the information contained herein, and same is submitted subject to errors, omissions, change of price, rental or other conditions, withdrawal without notice, and to any special listing conditions imposed by our principals.