

1101 WORCESTER ROAD
FRAMINGHAM, MA



**OFFICE SPACE
FOR LEASE**



CONTACT

GARRETT QUINN
Senior Advisor
garrett.quinn@svn.com
508.271.9229

MATT CUNEO
Associate Advisor
matt.cuneo@svn.com
508.271.9212

1101 WORCESTER ROAD FRAMINGHAM, MA

PROPERTY DESCRIPTION

SVN | Parsons Commercial Group | Boston is pleased to announce the opportunity to lease approximately 1,100 to 4,500 SF of first floor office space for lease at 1101 Worcester Road in Framingham. The building offers a 4,500 first floor suite on Route 9 in Framingham sub-dividable to approximately 2,250 SF. There is also a 1,100 SF suite available on the third floor. The prime space offers excellent window lines in an attractive professional building with one elevator. The space features multiple private offices, a conference room, kitchenette and other amenities.

Outstanding business location on Route 9 westbound in Framingham offering easy access to turnarounds and close to Mass Pike Exit 12, Route 495, and nearby towns of Natick, Sudbury, Wayland, and Southborough. Many area conveniences. Ample on-site parking.

SUMMARY

AVAILABLE SPACE	± 2,250 SF - 4,500 SF 1st Floor ± 1,100 SF 3rd Floor
DATE AVAILABLE	Immediately
PRICING	Negotiable

PROPERTY HIGHLIGHTS

- Ample parking with dedicated lot
- Lobby renovations in progress
- Handicap Accessible
- Window line allows for plenty of natural light

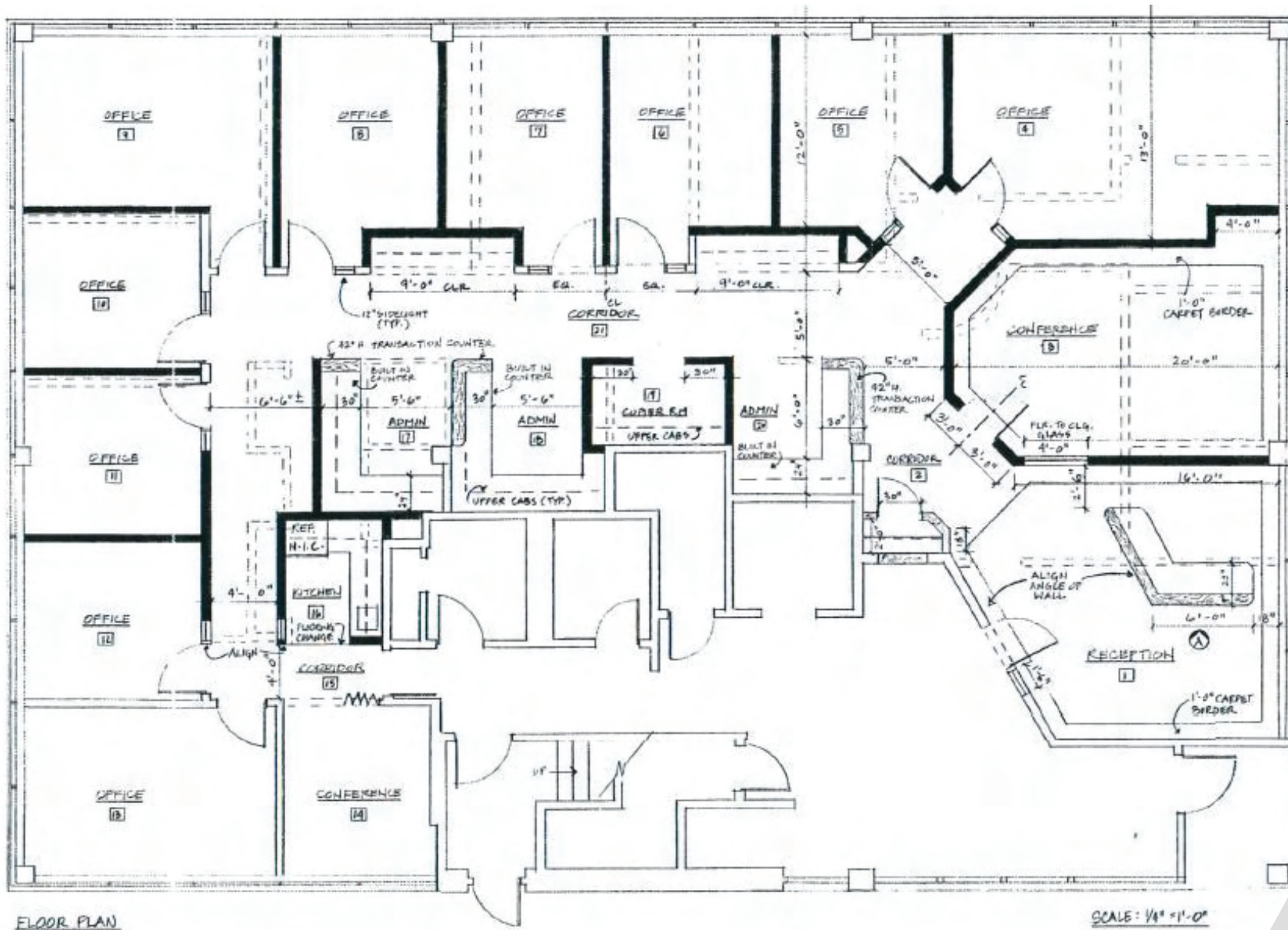




LOCATION OVERVIEW

1101 Worcester Road is conveniently located on Route 9 westbound in Framingham offering easy access and close proximity to plenty of nearby amenities including restaurants, retail, banks, and more.

and close to Mass Pike Exit 12, Route 495, and nearby towns of Natick, Sudbury, Wayland, and Southborough. Many area conveniences. Ample on-site parking.



1st Floor | 2,250 - 4,500 SF