

Citrus-Chapman Medical Building

1031 W. Chapman Avenue, Orange, CA 92868



Bryan McKenney
(949) 478 - 0087 | LIC#01505792
Bryan@MedWestRealty.com

Casey P. Immel
(949) 278 - 5376 | LIC#01312850
Casey@MedWestRealty.com

**Medical or Dental
Suite for Lease**

Citrus-Chapman Medical Building

1031 W. Chapman Avenue, Orange, CA 92868



FEATURES:

- 2,853 RSF Available
- Chapman Street Front
- Abundant Free Surface Parking
- Near Retail Amenities
- Close proximity to St. Joseph Hospital and CHOC
- Shell space
- Generous TI Allowance



Citrus-Chapman Medical Building

1031 W. Chapman Avenue, Orange, CA 92868

AERIAL VIEW:



**Citrus-Chapman
Medical Building**



Bryan McKenney
(949) 478 - 0087 | LIC#01505792
Bryan@MedWestRealty.com

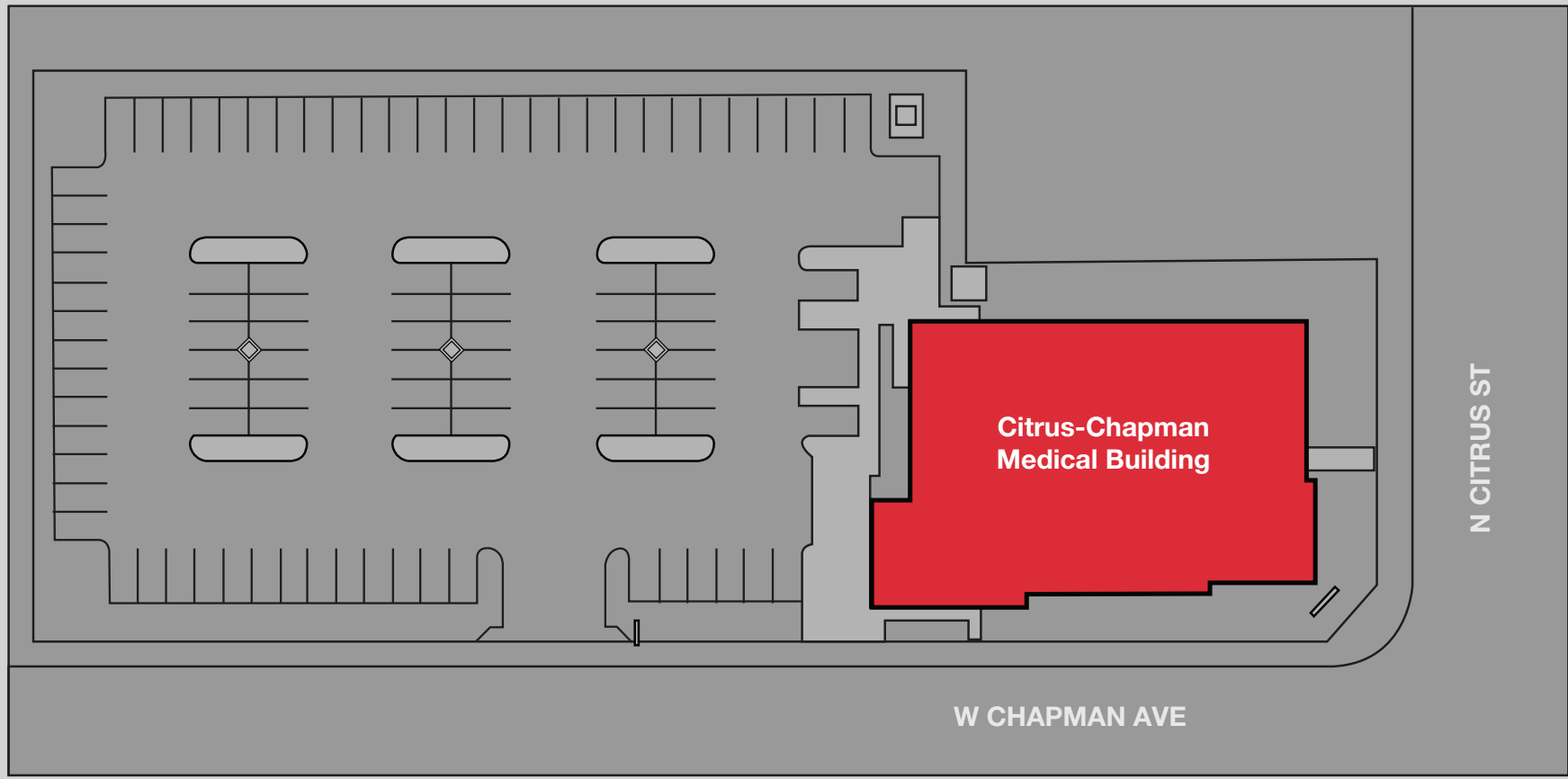
Casey P. Immel
(949) 278 - 5376 | LIC#01312850
Casey@MedWestRealty.com

**Medical or Dental
Suite for Lease**

Citrus-Chapman Medical Building

1031 W. Chapman Avenue, Orange, CA 92868

SITE PLAN:



Bryan McKenney
(949) 478 - 0087 | LIC#01505792
Bryan@MedWestRealty.com

Casey P. Immel
(949) 278 - 5376 | LIC#01312850
Casey@MedWestRealty.com

**Medical or Dental
Suite for Lease**

Citrus-Chapman Medical Building

1031 W. Chapman Avenue, Orange, CA 92868

AVAILABLE SUITE:

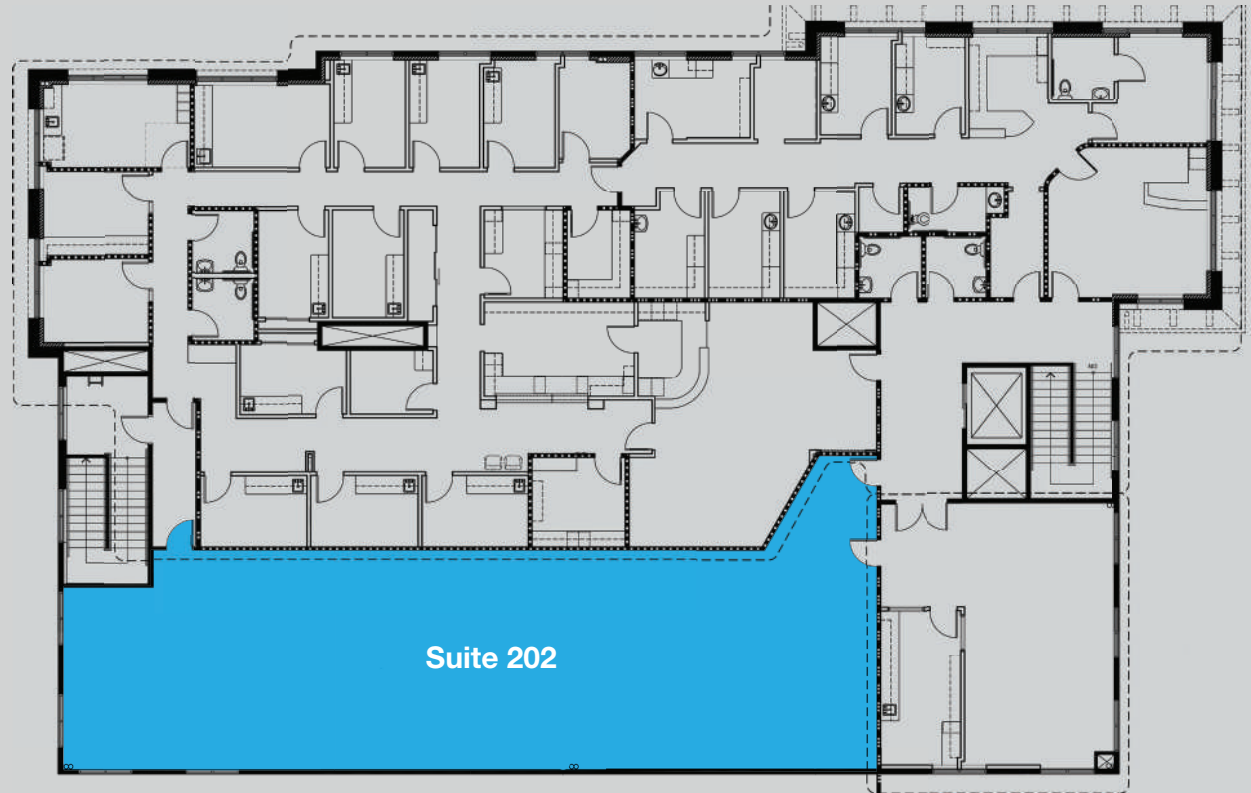
Suite 202 - 2,853 RSF

SUITE DESCRIPTION:

Shell condition ready for
Tenant's customization.

LEASE RATE:

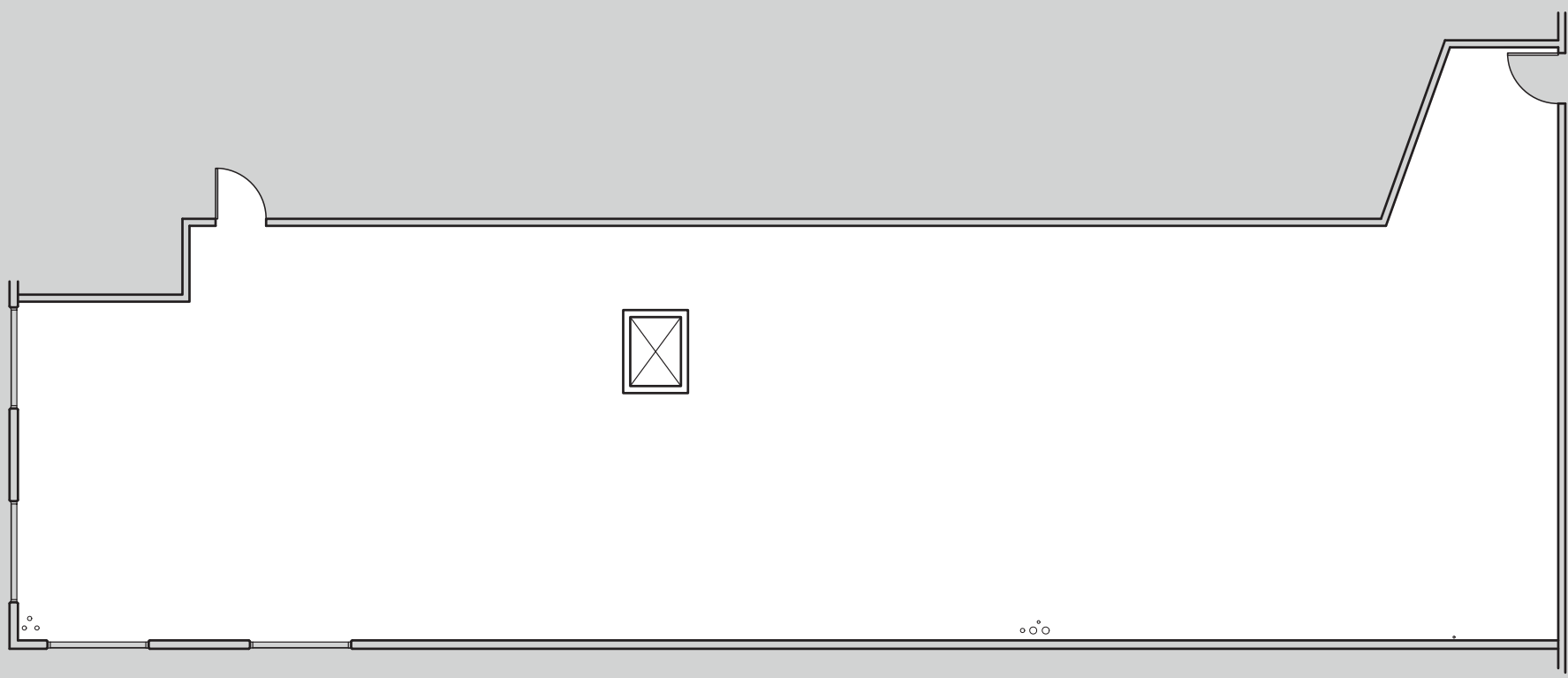
\$2.95 NNN



Citrus-Chapman Medical Building

1031 W. Chapman Avenue, Orange, CA 92868

Suite 202 - 2,853 RSF



Bryan McKenney
(949) 478 - 0087 | LIC#01505792
Bryan@MedWestRealty.com

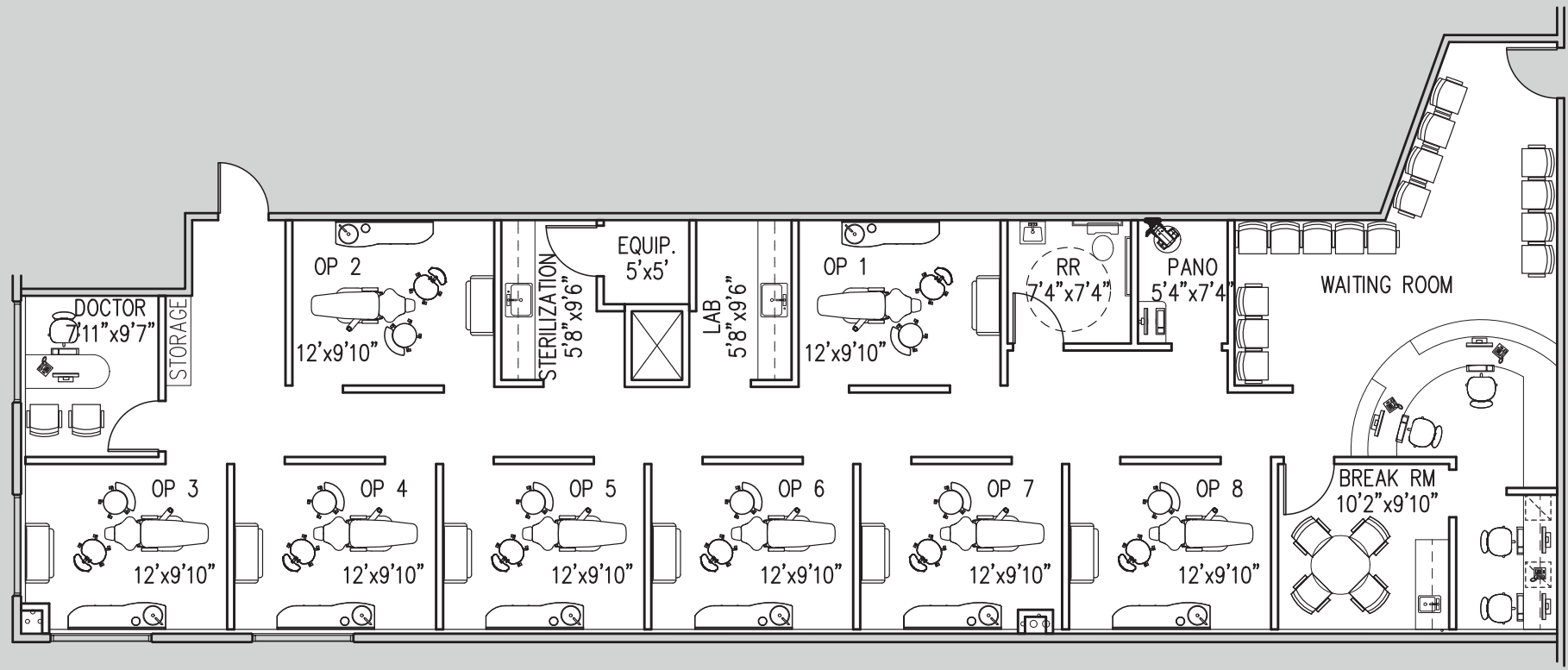
Casey P. Immel
(949) 278 - 5376 | LIC#01312850
Casey@MedWestRealty.com

**Medical or Dental
Suite for Lease**

Citrus-Chapman Medical Building

1031 W. Chapman Avenue, Orange, CA 92868

Suite 202 - 2,853 RSF
Spec Dental Plan



Bryan McKenney
(949) 478 - 0087 | LIC#01505792
Bryan@MedWestRealty.com

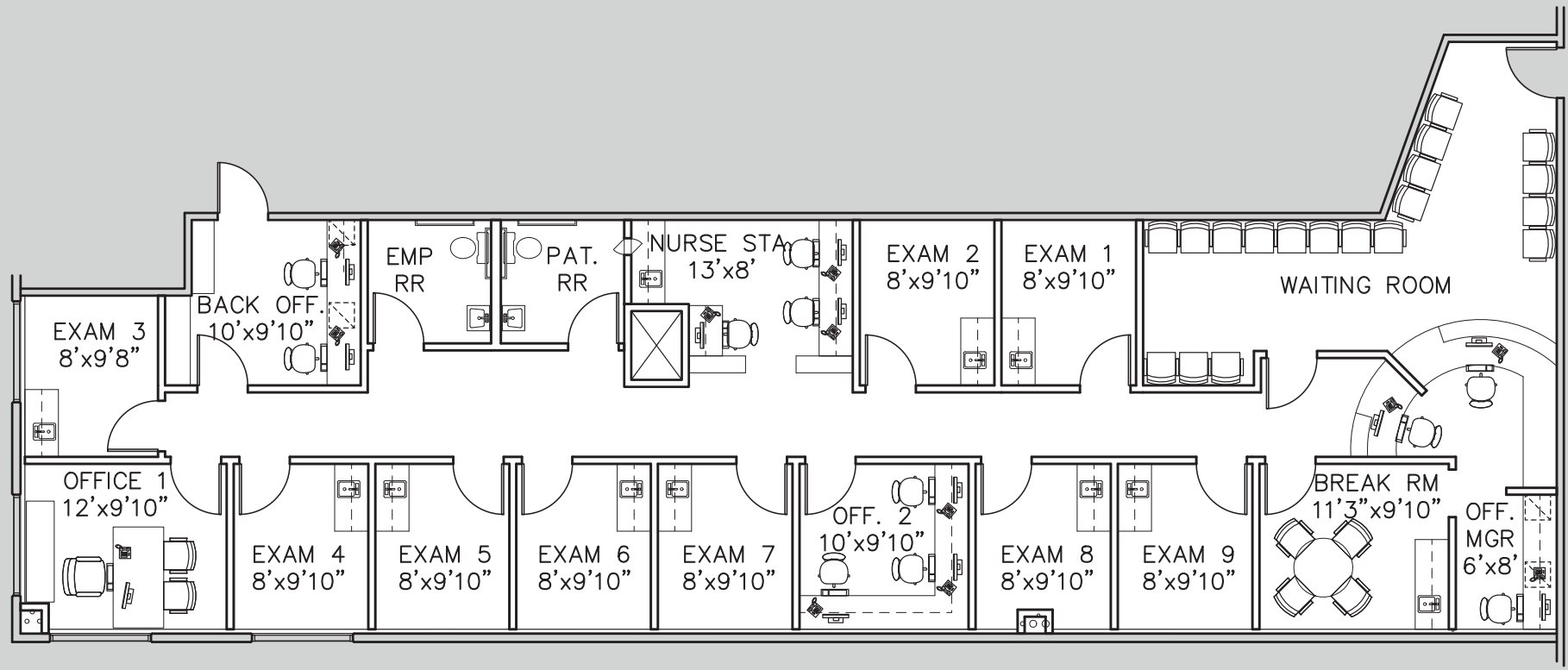
Casey P. Immel
(949) 278 - 5376 | LIC#01312850
Casey@MedWestRealty.com

**Medical or Dental
Suite for Lease**

Citrus-Chapman Medical Building

1031 W. Chapman Avenue, Orange, CA 92868

Suite 202 - 2,853 RSF
Spec Medical Plan



Bryan McKenney
(949) 478 - 0087 | LIC#01505792
Bryan@MedWestRealty.com

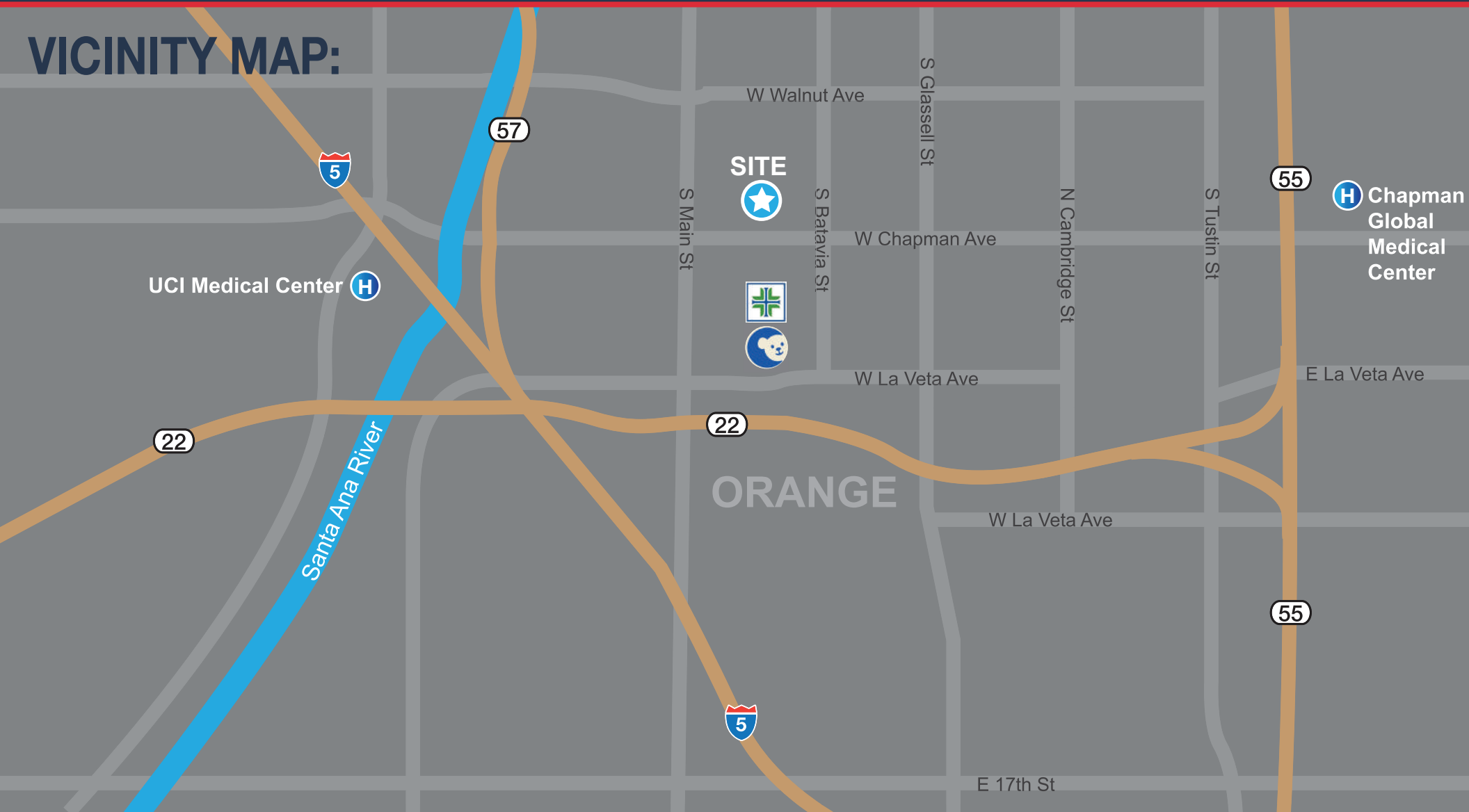
Casey P. Immel
(949) 278 - 5376 | LIC#01312850
Casey@MedWestRealty.com

**Medical or Dental
Suite for Lease**

Citrus-Chapman Medical Building

1031 W. Chapman Avenue, Orange, CA 92868

VICINITY MAP:



Bryan McKenney
(949) 478 - 0087 | LIC#01505792
Bryan@MedWestRealty.com

Casey P. Immel
(949) 278 - 5376 | LIC#01312850
Casey@MedWestRealty.com

**Medical or Dental
Suite for Lease**