

5831 TILGHMAN ST
ALLENTOWN, PA 18104

FOR
LEASE

\$20/SF NNN



2,380 SF AVAILABLE

Join Dunkin' with Truffle Bar coming soon!

Outstanding retail opportunity at the corner of Blue Barn Rd and heavily traveled Tilghman Street in Upper Macungie Township!

Situated between CVS and Dunkin' Donuts, a fully built out 2,380 SF office or retail endcap suite is available for immediate occupancy. Great location and visibility in a huge growth market!



kw
KELLERWILLIAMS.
REAL ESTATE
Each office is individually owned and operated

James Balliet
President
O 610-435-1800
C 610-972-6808

James@JBPropertyGroup.com
JBPropertyGroup.com

 **THE James Balliet**
PROPERTY GROUP

Brian K. Bailey
Associate Broker
O 610-435-1800
C 484-357-8559

Brian@JBPropertyGroup.com
JBPropertyGroup.com

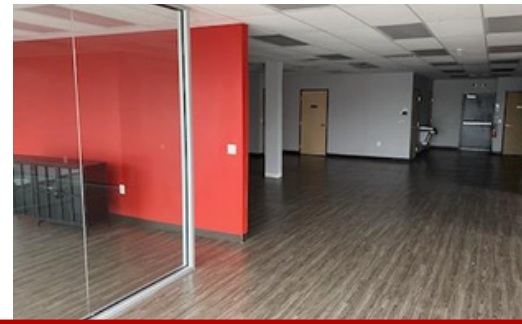
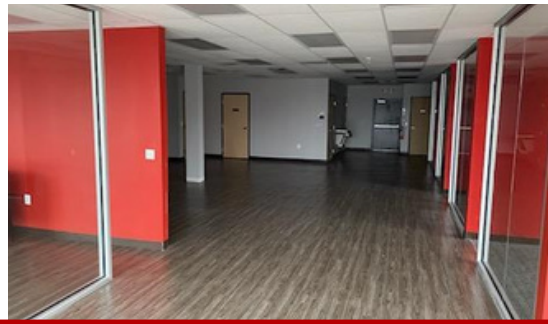
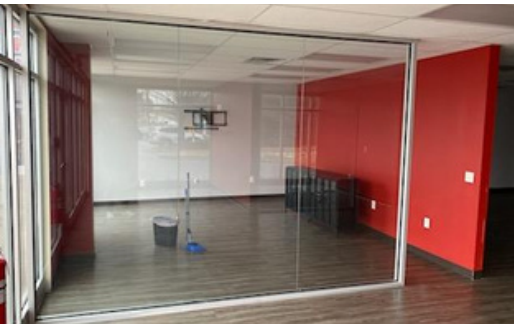
2,380 SF AVAILABLE



**Truffle Bar
Coming Soon!** **2,380 SF
Endcap Available**



2,380 SF OFFICE/RETAIL SPACE



kw
KELLERWILLIAMS
REAL ESTATE
Each office is individually owned and operated

James Balliet
President

O 610-435-1800

C 610-972-6808

James@JBPropertyGroup.com

JBPropertyGroup.com

 **THE James Balliet**
PROPERTY GROUP

Brian K. Bailey
Associate Broker

O 610-435-1800

C 484-357-8559

Brian@JBPropertyGroup.com

JBPropertyGroup.com