

PIEDMONT WEST

1800 Howell Mill Road
Atlanta, Georgia 30318

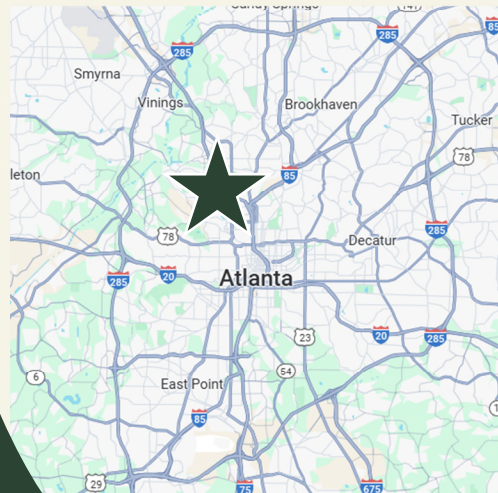
Fulton County



FORMER RESTAURANT
1,314 SF

LEASING INFORMATION

JIMMY DAVIS
770.597.0490
jimmy.davis@bridger-properties.com



- Street-Level Retail in the 264,000 square foot/8-story Class-A Medical Building at I-75 and Howell Mill Road.
- The property has 1,084 dedicated parking spaces with Full Access on Howell Mill Road via a shared rear drive.
- Tremendous daytime business with 10,761 Employees within 1 mile and 57,388 Employees within 2 miles!
- Traffic Counts of 47,800 VPD on Howell Mill Road.
- Piedmont Hospital leases over 135,000 square feet of the building with such practices as their Cancer Center, Surgery Center, and Radiology Imaging Services.





FORMER RESTAURANT
1,314 SF



THE ALEXANDER
AT THE DISTRICT
(280 Apartments)

BERKELEY HEIGHTS
(182 Apartments)



TIRE SOUTH
WAFFLE HOUSE

ACE Hardware

QT
QuikTrip

MAVIS
Multi-Category
TIRE
AT&T

47,800 VPD
Howell Mill Road

Northside Drive

Bellemeade Ave

PIEDMONT WEST

TRADE AREA OVERVIEW



Total Population

1 MILE: 14,421
3 MILE: 142,044
5 MILE: 365,449



Total Households

1 MILE: 7,811
3 MILE: 70,559
5 MILE: 179,031



Median HH Incomes

1 MILE: \$99,736
3 MILE: \$93,367
5 MILE: \$87,039

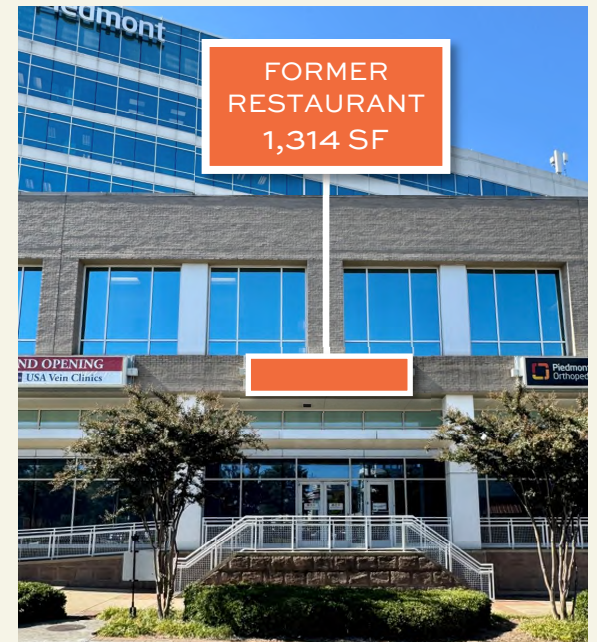
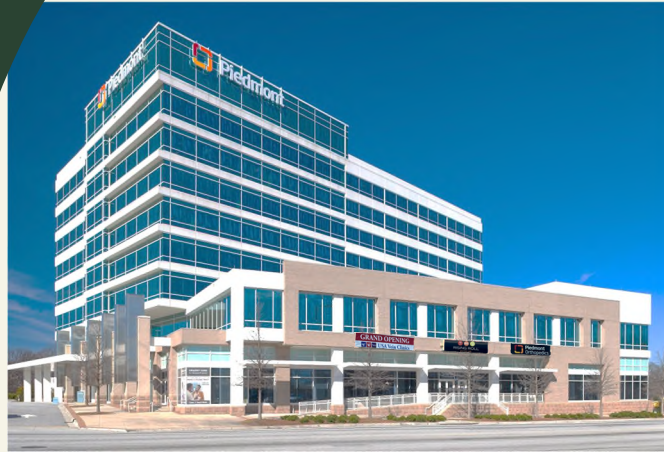


Total Employees

1 MILE: 10,761
3 MILE: 164,381
5 MILE: 443,863

PIEDMONT WEST

PROPERTY PHOTOS



LEASING INFORMATION

JIMMY DAVIS

770.597.0490

jimmy.davis@bridger-properties.com

ESTD  2020

BRIDGER
PROPERTIES

PIEDMONT WEST

PROPERTY PHOTOS



LEASING INFORMATION

JIMMY DAVIS

770.597.0490

jimmy.davis@bridger-properties.com

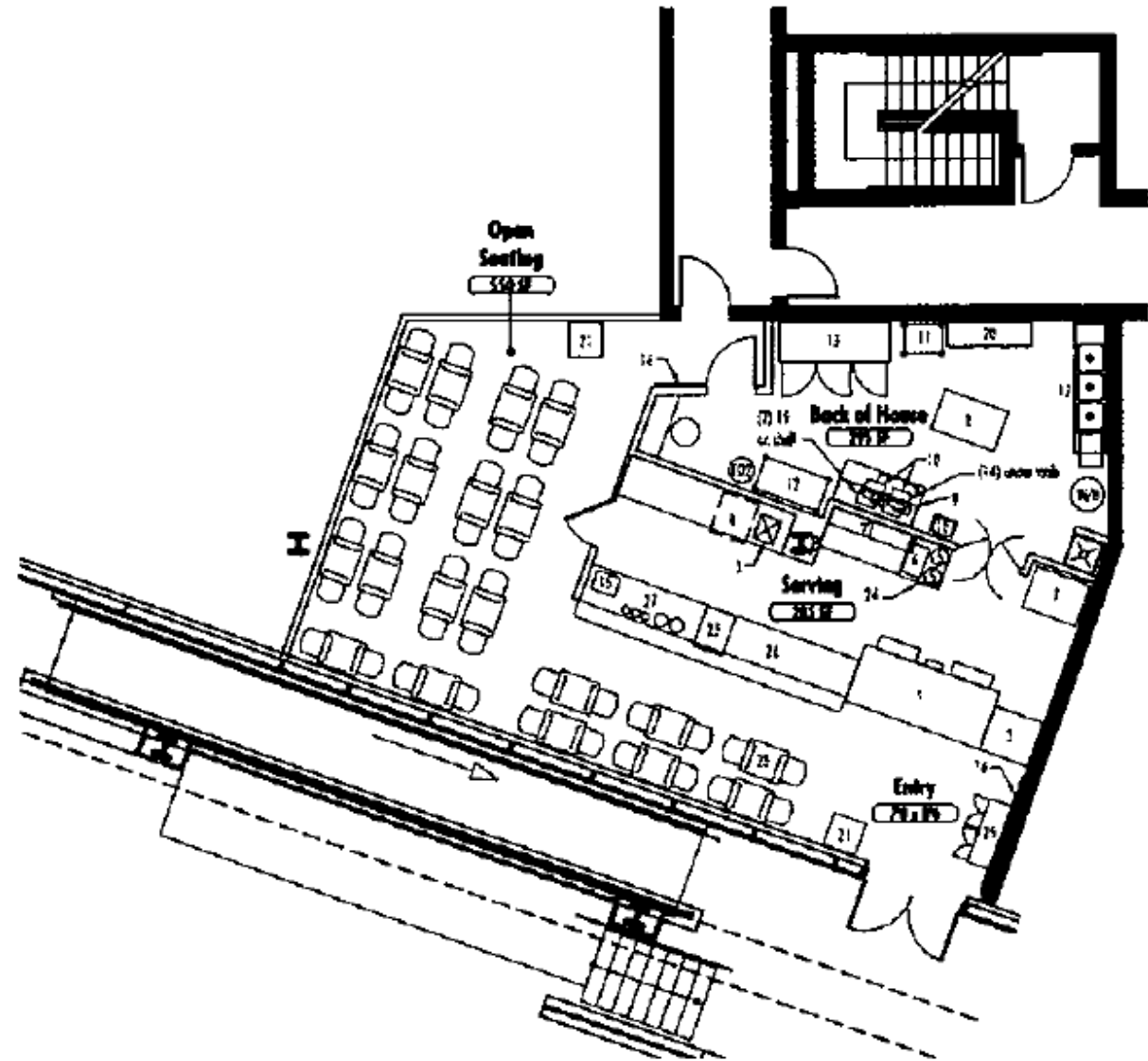


ESTD  2020

BRIDGER
PROPERTIES

PIEDMONT WEST

FLOOR PLAN



LEASING INFORMATION

JIMMY DAVIS

770.597.0490

jimmy.davis@bridger-properties.com



Schematic Plan #1

Scale: 1/8" = 1'-0" (not to scale for email transmission)

ESTD  2020

BRIDGER
PROPERTIES