



FOR LEASE

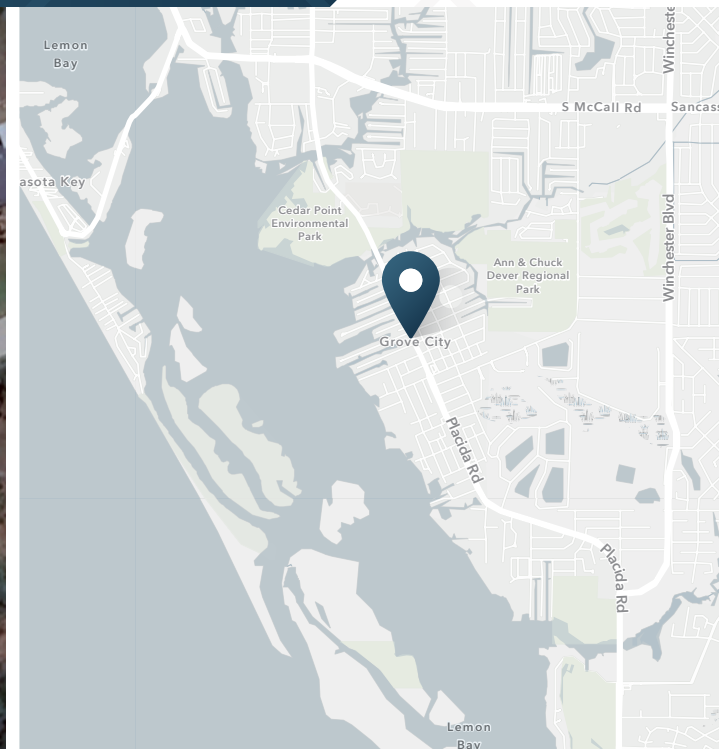
Bank Branch Available

2691 Placida Rd. | Grove City, FL 34224



Bank Branch Available

2691 Placida Rd. | Grove, FL 34224



.51 Acres

Available

Contact
Broker

Rate

ABOUT THE PROPERTY

- Located at the hard corner signalized intersection of Placida Road and Mississippi Avenue, this property experiences traffic counts in excess of 15,800 vehicles per day.
- This 3,012 square foot bank branch is situated on a large .54 acre parcel of land.
- Only 8 minutes from this bank is Englewood Community Hospital, a 100 Bed hospital, and 20 minutes from this property is Cape Coral Hospital which has 291 Beds, 600 physicians, 1200 employees, 1000 volunteers and services 55,000 patients annually.

NEARBY RETAILERS

Walgreens

CIRCLE K

BEALLS

Pet Super market



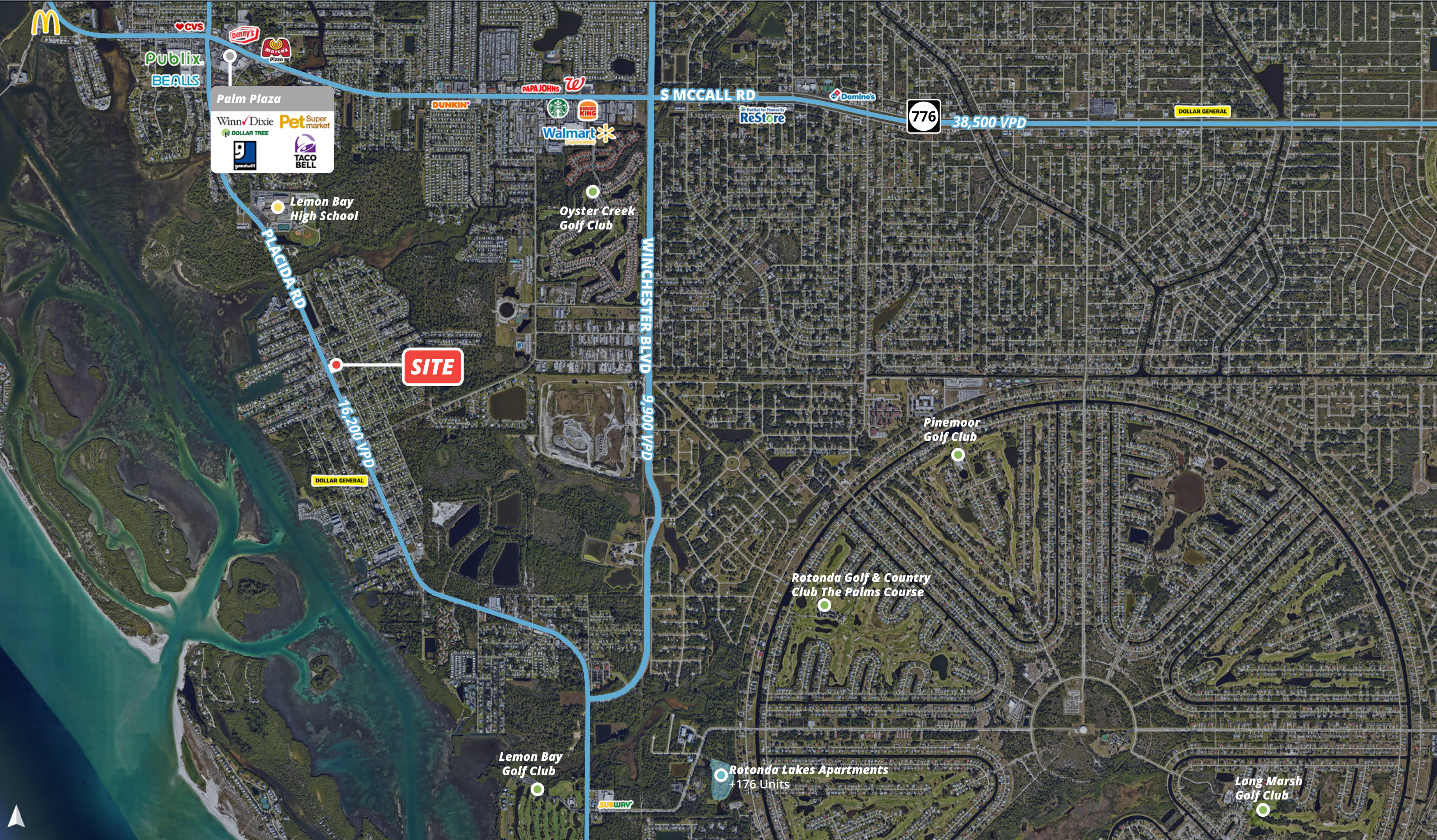
SONNY'S BBQ

TRAFFIC COUNTS

Palm Coast Pkwy.

33,000 VPD

Year: 2025 | Source: FDOT



Bank Branch Available

2691 Placida Rd. | Grove City, FL 34224



DEMOGRAPHIC HIGHLIGHTS

1 MILE

2,863	3,145	\$87,256	1,513
Population	Total Daytime Population	Average Household Income	Total Households

3 MILES

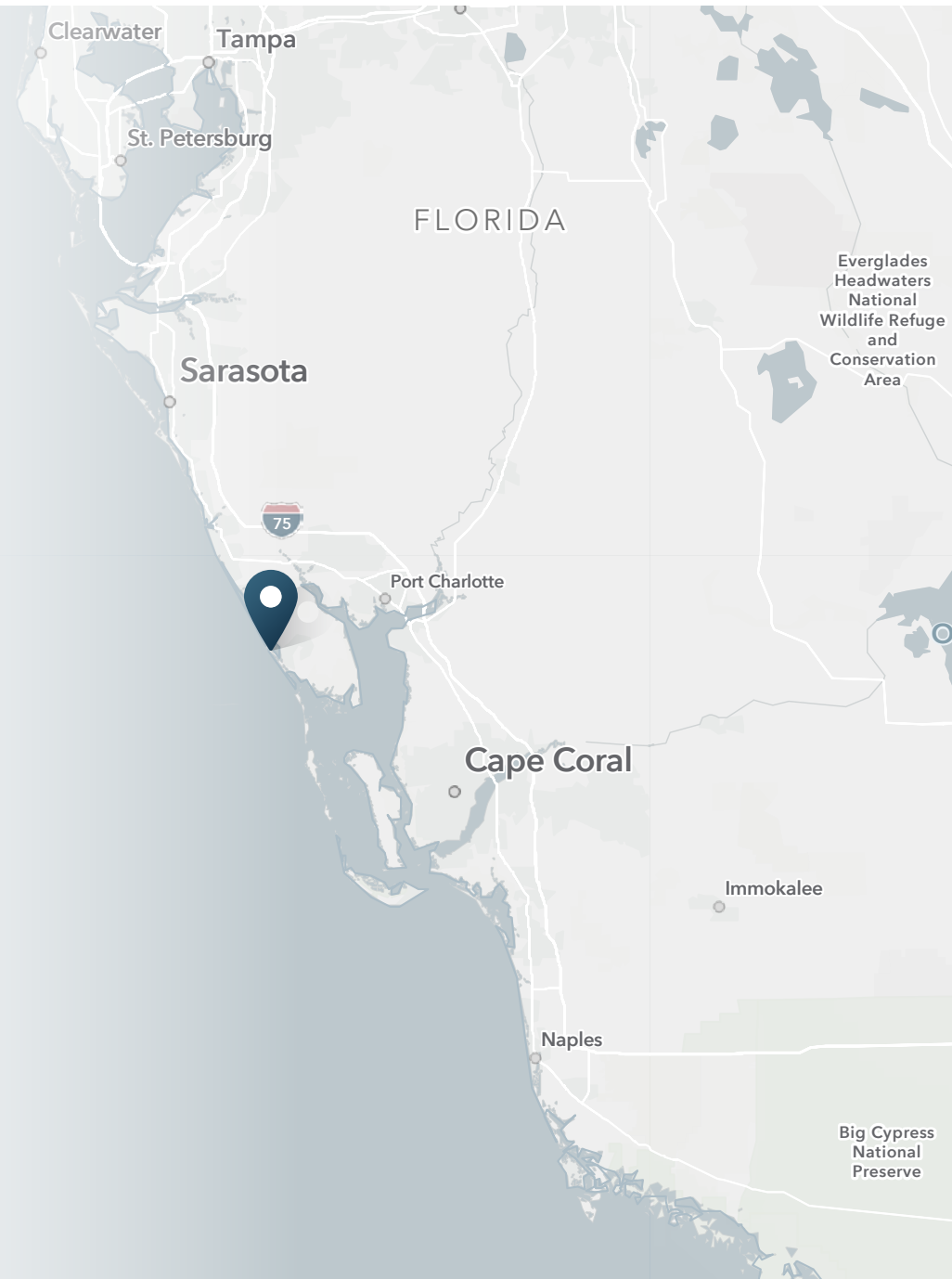
20,582	21,840	\$93,810	10,910
Population	Total Daytime Population	Average Household Income	Total Households

5 MILES

41,586	41,462	\$93,109	21,493
Population	Total Daytime Population	Average Household Income	Total Households

> **Want more?** Contact us for a complete demographic, foot-traffic, and mobile data insights report.

SOURCE





SRS Real Estate Partners
1501 W. Cleveland St, Suite 300
Tampa, FL 33606
813.371.0980

Chris Stewart
813.760.8897
chris.stewart@srsre.com

SRSRE.COM

©2025 SRS Real Estate Partners LLC. All Rights Reserved.

The information presented was obtained from sources deemed reliable;
however SRS Real Estate Partners does not guarantee its completeness or accuracy.