

OFFERING MEMORANDUM

CAMAS PROFESSIONAL CENTER

Owner-User or Value-Add Investment Opportunity

3517 NW CAMAS MEADOWS DRIVE, CAMAS, WA 98607





TABLE OF CONTENTS

01

INVESTMENT SUMMARY

02

PROPERTY OVERVIEW

03

LOCATION OVERVIEW

Exclusively Listed by The Gellner Team

PARKER KSIDAKIS

First Vice President
206.708.9420
parker.ksidakis@kidder.com

DAVID GELLNER

Executive Vice President
206.747.4338
david.gellner@kidder.com

MICHELLE PLAFCAN

Client Service Coordinator
503.221.2264
michelle.plafcan@kidder.com

KIDDER.COM

The information contained in the following Marketing Brochure is proprietary and strictly confidential. It is intended to be reviewed only by the party receiving it from Kidder Mathews and should not be made available to any other person or entity without the written consent of Kidder Mathews.

This Marketing Brochure has been prepared to provide summary, unverified information to prospective purchasers, and to establish only a preliminary level of interest in the subject property. The information contained herein is not a substitute for a thorough due diligence investigation. Kidder Mathews has not made any investigation, and makes no warranty or representation, with respect to the income or expenses for the subject property, the future projected financial performance of the property, the size and square footage of the property and improvements, the presence or absence of contaminating substances, PCB's or asbestos, the compliance with State and Federal regulations, the physical condition of the improvements thereon, or the financial condition or business prospects of any tenant, or any tenant's plans or intentions to continue its occupancy of the subject property. The information contained in this Marketing Brochure has been obtained from sources we believe to be reliable; however, Kidder Mathews has not verified, and will not verify, any of the information contained herein, nor has Kidder Mathews conducted any investigation regarding these matters and makes no warranty or representation whatsoever regarding the accuracy or completeness of the information provided. All potential buyers must take appropriate measures to verify all of the information set forth herein.

This information has been secured from sources we believe to be reliable. We make no representations or warranties, expressed or implied, as to the accuracy of the information. References to square footage or age are approximate. Recipient of this report must verify the information and bears all risk for any inaccuracies.



INVESTMENT SUMMARY

INVESTMENT SUMMARY

Kidder Mathews is pleased to present the opportunity to acquire Camas Professional Center, newly constructed Class A medical office space located in rapidly growing Camas, WA. Currently 43% occupied, the building provides flexibility for an owner-user while also maintaining stable income from existing tenancy.

\$7,250,000

PRICE

\$362

PRICE/SF

ADDRESS 3517 NW Camas Meadows Drive, Camas, WA

BUILDING AREA 20,027 RSF

LAND AREA 61,855 SF

OCCUPANCY 43%

YEAR BUILT 2022

ZONING Business Park (BP), City of Camas

INVESTMENT HIGHLIGHTS

Beautiful park-like setting featuring a Japanese garden, two water features, putting green, and employee break area

Adjacent to Camas Meadows Golf Course and Camas Meadows Crossing, a newly developed Toll Brothers luxury townhome community

43% occupied with flexibility for an owner-user

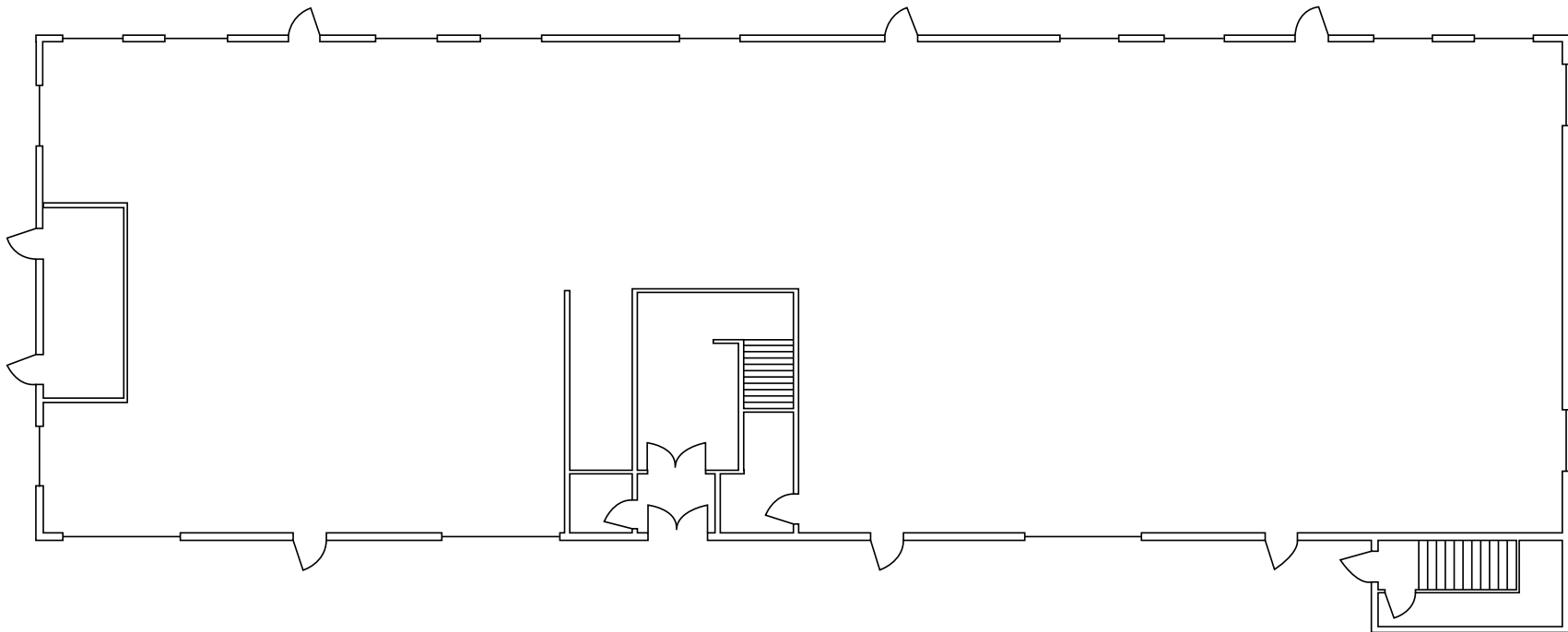
Off-street parking (5/1,000)



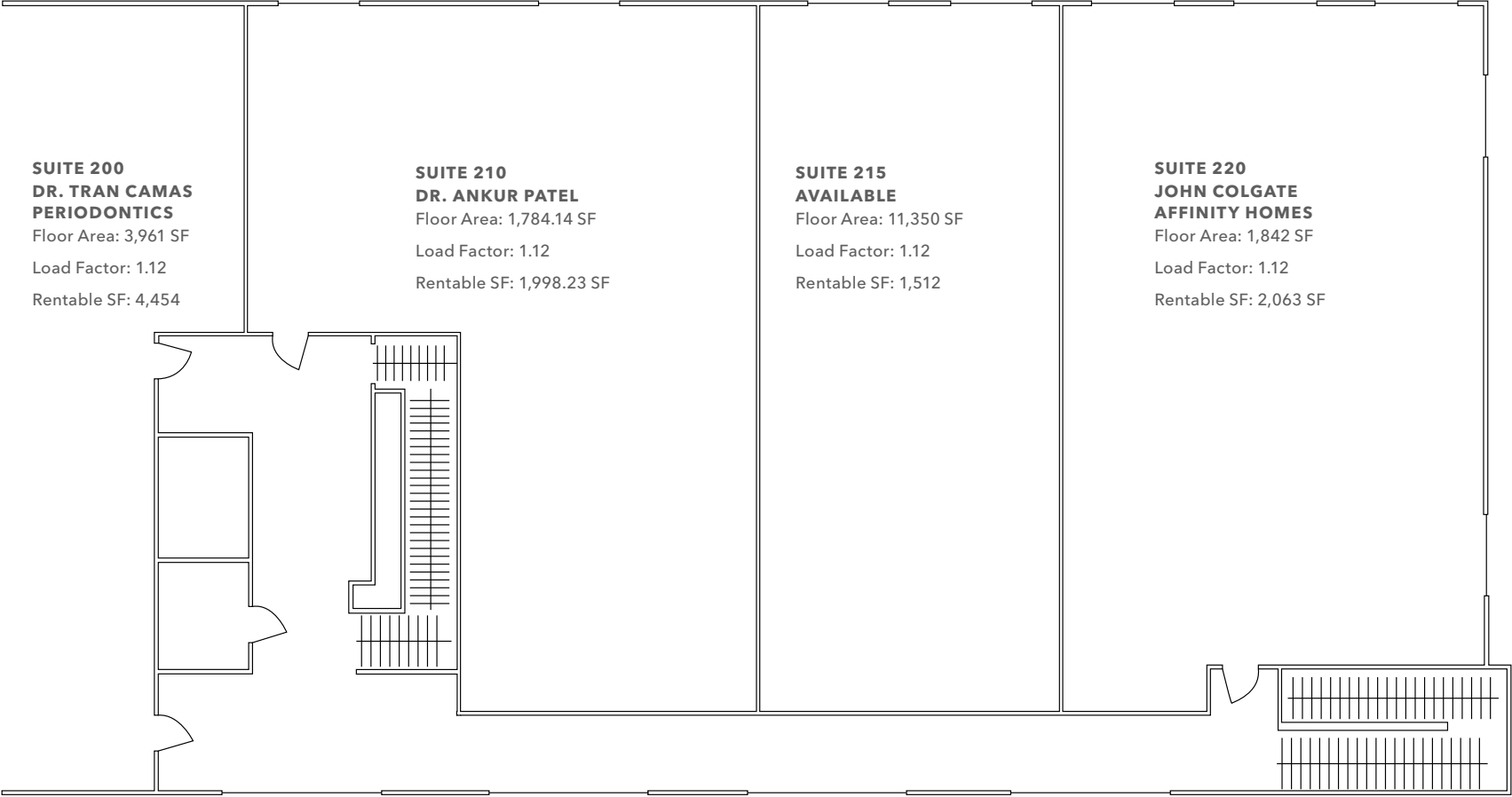
A modern office interior featuring a blue wall, a vertical wood slat partition, and three leather armchairs. A reception desk with a plant and framed certificates is on the left. A large, textured cylindrical ottoman sits in the center. The floor is covered in a grey carpet with a geometric pattern.

PROPERTY OVERVIEW

1ST FLOOR PLAN



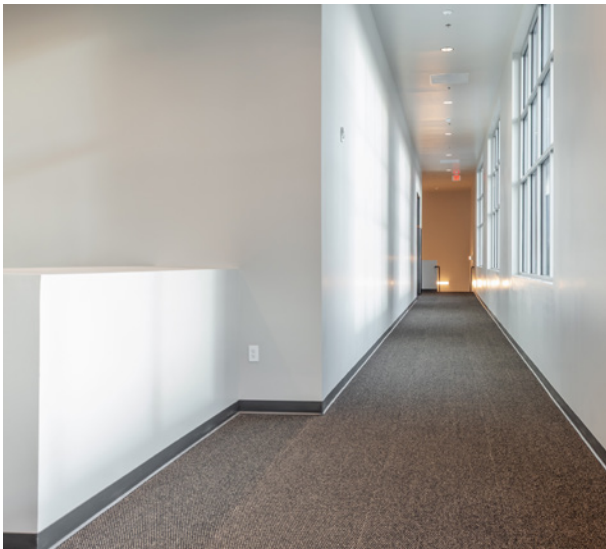
2ND FLOOR PLAN



EXTERIOR PHOTOS



INTERIOR PHOTOS





LOCATION OVERVIEW

Section 03



CAMAS

Camas, WA is a thriving and affluent suburban city located in Clark County in southwest Washington, immediately east of Vancouver, WA and within the broader Portland-Vancouver metropolitan area.

The city enjoys excellent connectivity via Interstate 205 and state highways, providing direct access to Vancouver, Portland, and the I-5 corridor, supporting strong retail traffic and regional spending patterns.

Camas's location within one of the fastest-growing metro areas in the Pacific Northwest enhances its economic visibility and positions it as a desirable commercial node serving both local residents and commuters.

Camas is widely regarded as a high-quality, family-oriented community with strong schools, desirable neighborhoods, and a high rate of homeownership. The Camas School District consistently ranks among the top in northwest Washington, further enhancing demand for family-oriented retail and services.

The city offers scenic amenities including Lacamas Lake and Washougal River trails, community parks, and a walkable downtown with cultural events and festivals – all supporting sustained local spending and community engagement.

LOCATION OVERVIEW



DEMOGRAPHICS

POPULATION

	1 Mile	3 Miles	5 Miles
2025 EST. TOTAL	1,989	51,355	132,047
2030 PROJECTION	2,173	51,846	133,256
2020 CENSUS	1,892	50,650	130,152
PROJECTED GROWTH 2025 - 2030	185	491	1,209

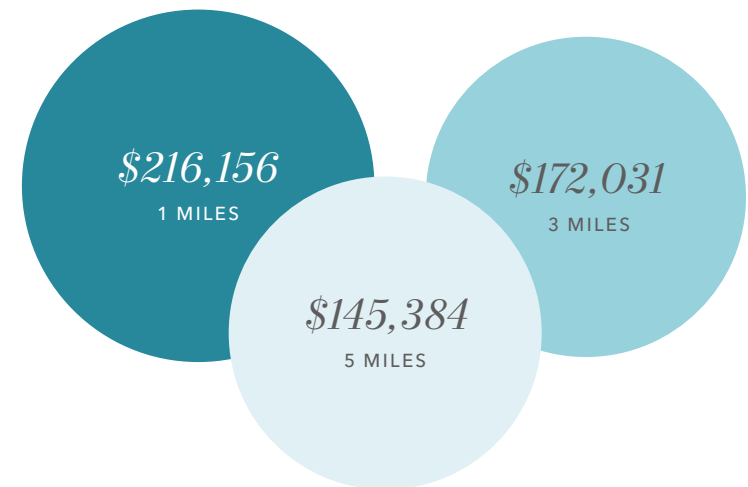
EMPLOYMENT & INCOME

	1 Mile	3 Miles	5 Miles
2025 EST. MEDIAN HH INCOME	\$128,970	\$131,986	\$111,975
2025 PER CAPITA INCOME	\$84,087	\$62,475	\$54,968
TOTAL BUSINESSES	141	1,941	4,684
TOTAL EMPLOYEES	1,757	20,074	38,827

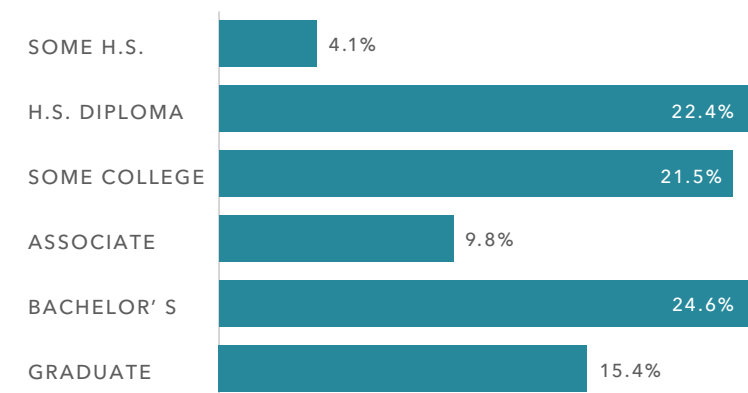
HOUSEHOLDS

	1 Mile	3 Miles	5 Miles
2025 TOTAL	773	18,644	49,860
2030 PROJECTED	860	19,092	51,088
2020 CENSUS	623	17,364	47,080
GROWTH 2025 - 2030	87	448	1,228

AVERAGE HOUSEHOLD INCOME



EDUCATION (5 MILES)



Data Source: ©2025, Sites USA



Exclusively listed by The Gellner Team

PARKER KSIDAKIS

First Vice President

206.708.9420

parker.ksidakis@kidder.com

DAVID GELLNER

Executive Vice President

206.747.4338

david.gellner@kidder.com

MICHELLE PLAFCAN

Client Service Coordinator

503.221.2264

michelle.plafcan@kidder.com

KIDDER.COM

**km Kidder
Mathews**