

FOR LEASE | OFFICE/FLEX - INDUSTRIAL

9,479 SF



4305 PINEVIEW BOULEVARD COMMERCE TOWNSHIP, MI 48390

PROPERTY HIGHLIGHTS:

- 4,107 SF - 9,479 SF Office/ Flex Industrial space
- Fabulous location at M-5 and Oakley Park in Commerce Township
- Great Hi-Tech facility nestled in scenic pine forest
- Access to a truckwell and large drive-in door
- Open floor plan, perfect for training and multi-use purposes
- Possibly divisible: Suite 100 - 5,372 SF or Suite 200 - 4,107 SF
- Below market rent and available immediately

The information provided herein along with any attachment(s) was obtained from sources believed to be reliable, however, Friedman Real Estate makes no guarantees, warranties, or representations as to the completeness or accuracy of such information and legal counsel is advised. All information provided is subject to verification and no liability for reliance on such information or errors or omissions is assumed. The presentation of this property is submitted subject to errors, omissions, change of price or conditions, prior sale or lease, or withdrawal without notice. Copyright © 2025 Friedman Real Estate. All rights reserved.

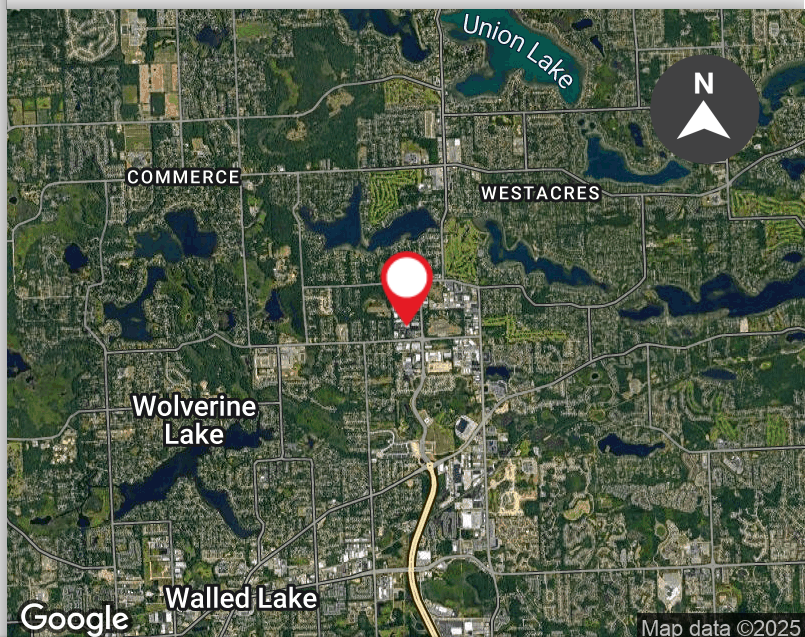
FOR MORE INFORMATION PLEASE CONTACT:



PHIL KONOPITSKI
Senior Vice President, Brokerage Services
phil.konopitski@freg.com

248.848.4127

eCODE 198



4305 PINEVIEW BOULEVARD

PROPERTY **INFORMATION**

HIGHLIGHTS

| | |
|----------------|----------------------------|
| Building SF: | 19,703 SF |
| Available SF: | 4,107 - 9,479 SF |
| County: | Oakland |
| Cross Streets: | Martin Rd & Oakley Park Rd |

SITE

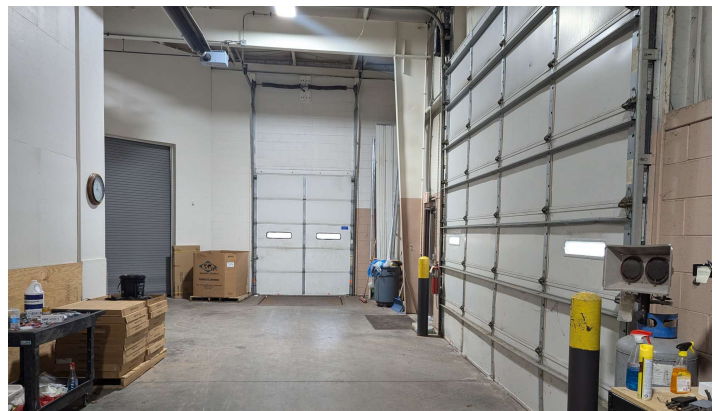
| | |
|----------------|-------------------|
| Parcel Number: | 17-13-300-078 |
| Zoning: | Industrial/Office |

PRICING & AVAILABILITY

| | |
|-------------------|---------------------|
| Lease Rate: | \$11.50 SF/yr (NNN) |
| Max Available SF: | ± 9,479 SF |
| Min Available SF: | ± 4,107 SF |

BUILDING INFORMATION

| | |
|-----------------------|-------------------|
| Type: | Industrial - Flex |
| Clear Height: | 18' |
| # Docks/Truckwells: | 1 |
| # Grade Level Doors: | 1 |
| Drive-In Door Height: | 14' |
| Overhead Door Type: | Insulated |

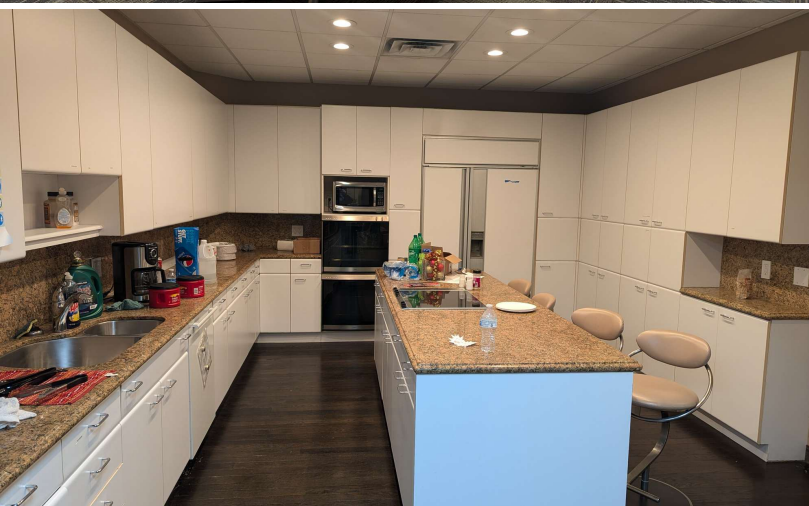
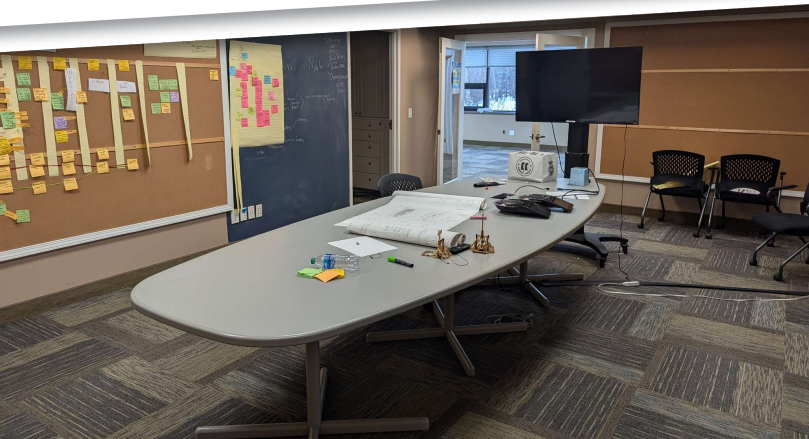


FOR MORE INFORMATION **PLEASE CONTACT:**

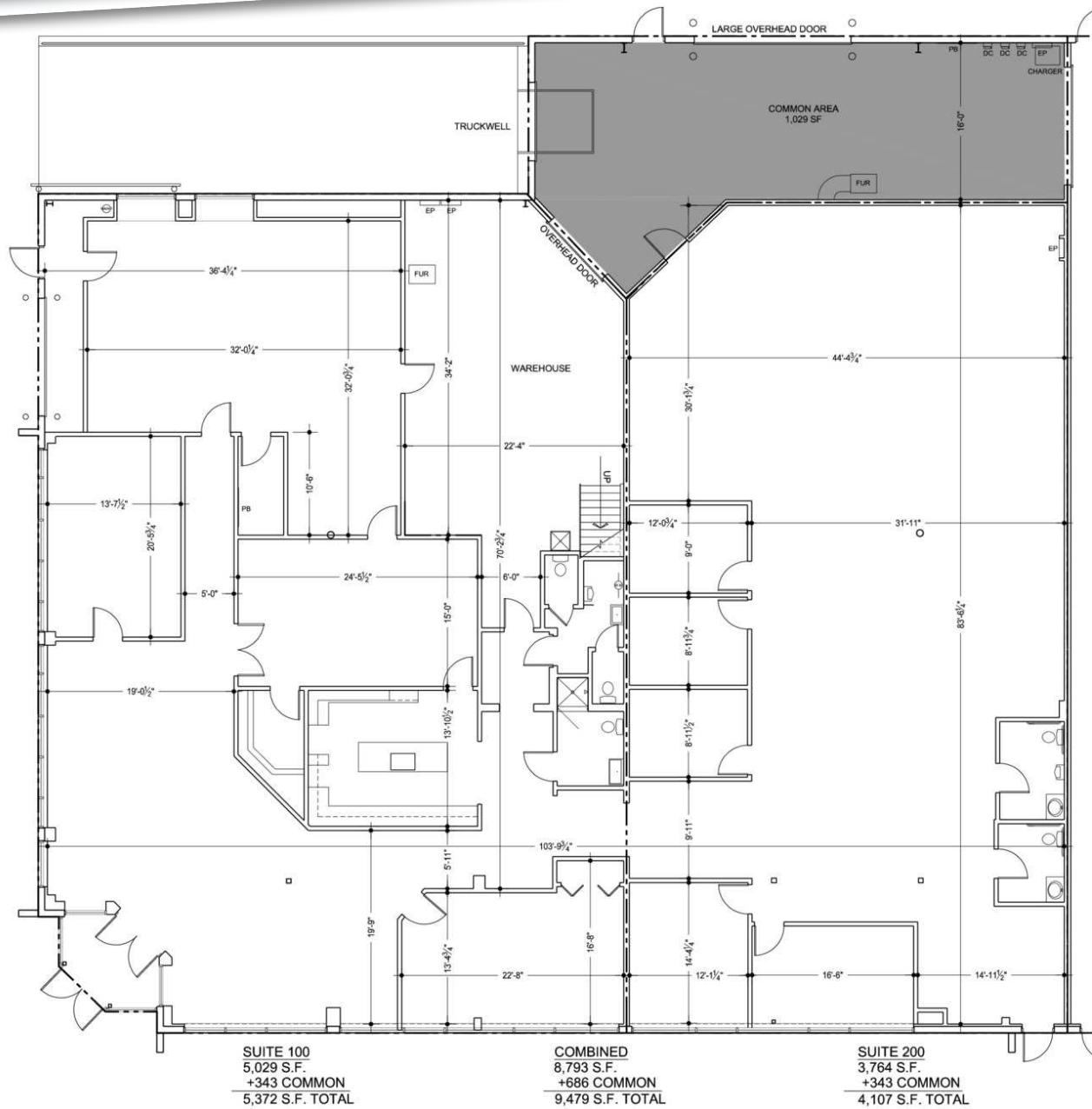


PHIL KONOPITSKI
phil.konopitski@freg.com

4305 PINEVIEW BOULEVARD
INTERIOR PHOTOS



4305 PINEVIEW BOULEVARD PROPERTY FLOOR PLAN



4305 PINEVIEW DR. COMMERCE, MI

7-17-2025

N.T.S.