

# Industrial Space | For Lease

440 Dundas Dr, Jacksonville, FL 32218

NORTHBRIDGE

CBRE



## Available for Lease:

- + **Building 2:** 48,000 SF (divisible in increments of 6,000 SF)
- + **Building 3:** 30,000 SF (divisible in increments of 6,000 SF)

## For More Information, Please Contact:

### Kyle Fisher

First Vice President  
+1 864 540 5926  
[kyle.fisher@cbre.com](mailto:kyle.fisher@cbre.com)

### Kyle Murphy

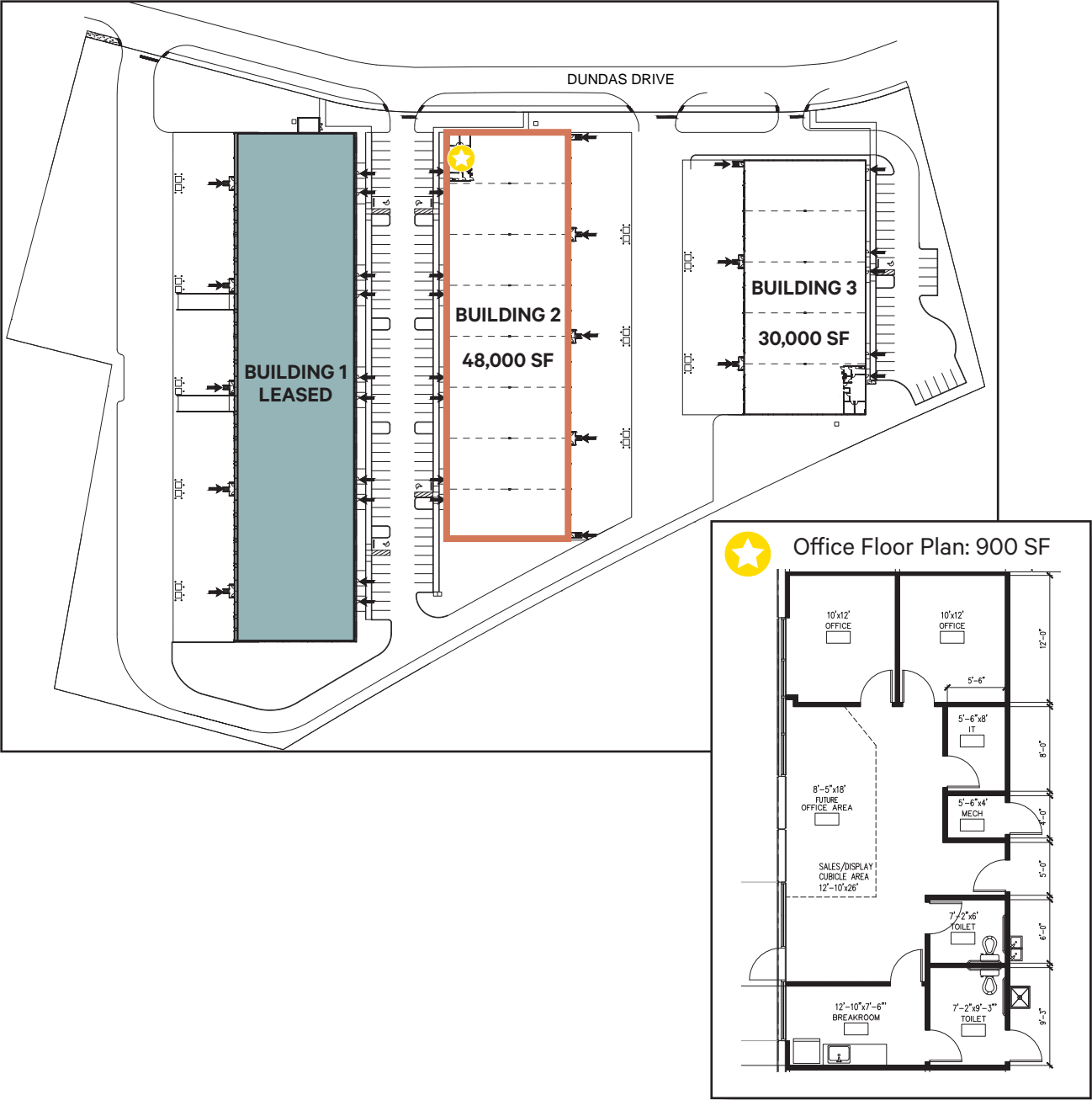
Associate

### Alliah Hardee

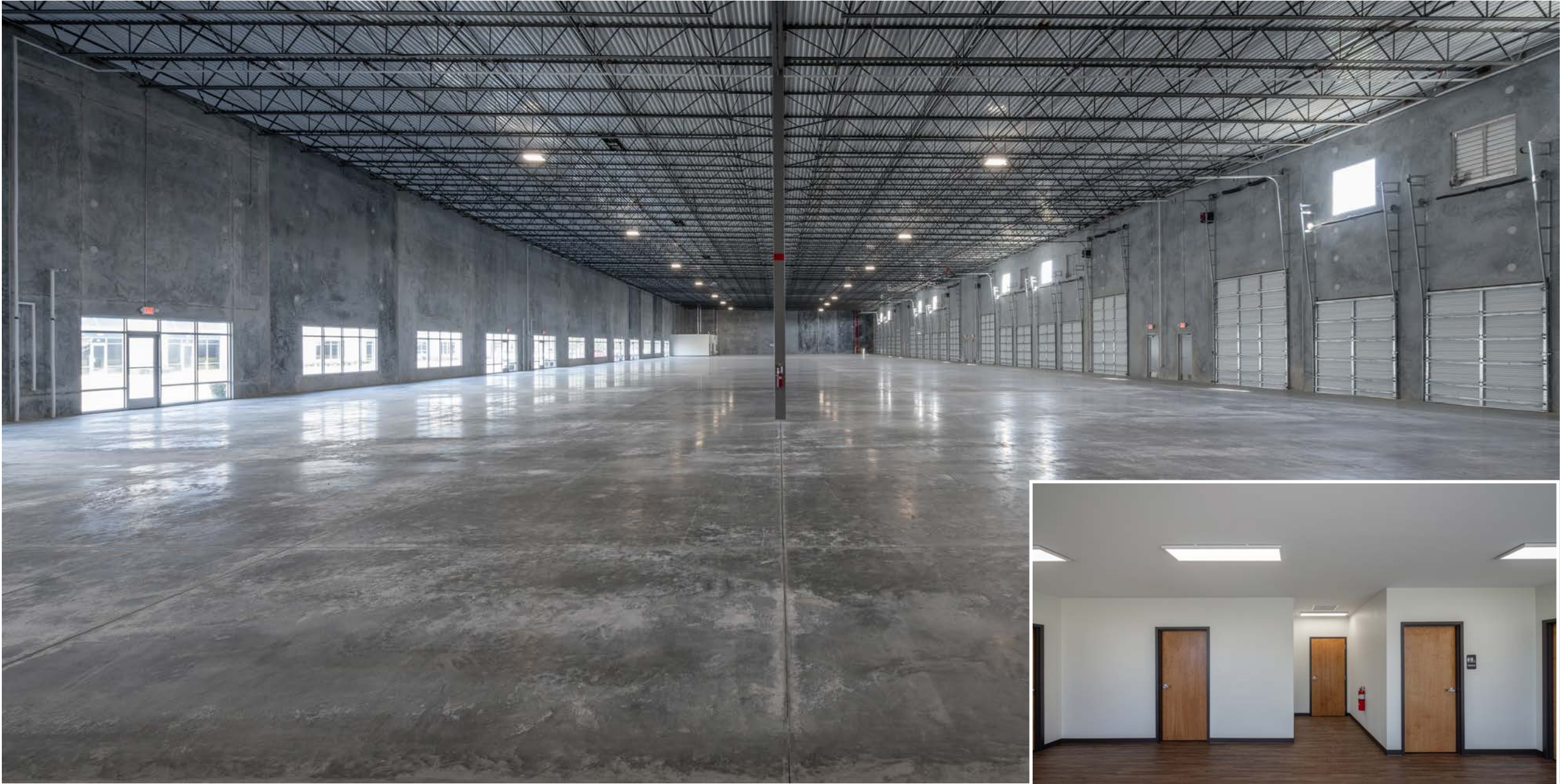
Associate

Building 2: ±48,000 SF Available

Available SF	48,000 SF
Minimum Suite Size	6,000 SF
Maximum Contiguous Suite Size	48,000 SF
Load Configuration	Rear
Building Dimensions	120'd x 400'w
Column Spacing	50'w x 60'd
Office	900 SF
Electrical	1,600A, 277/480V, 3 phase
Clear Height	26' clear
Warehouse Lighting	Stumble lighting
Fire Suppression	ESFR
Dock Doors (9'x10')	16
Ramp (12'x14')	8
Dock Apron	60' concrete
Truck Court	170' shared
Roof	.60 mil TPO with R-21 insulation
Auto Parking	.86 per 1,000 SF



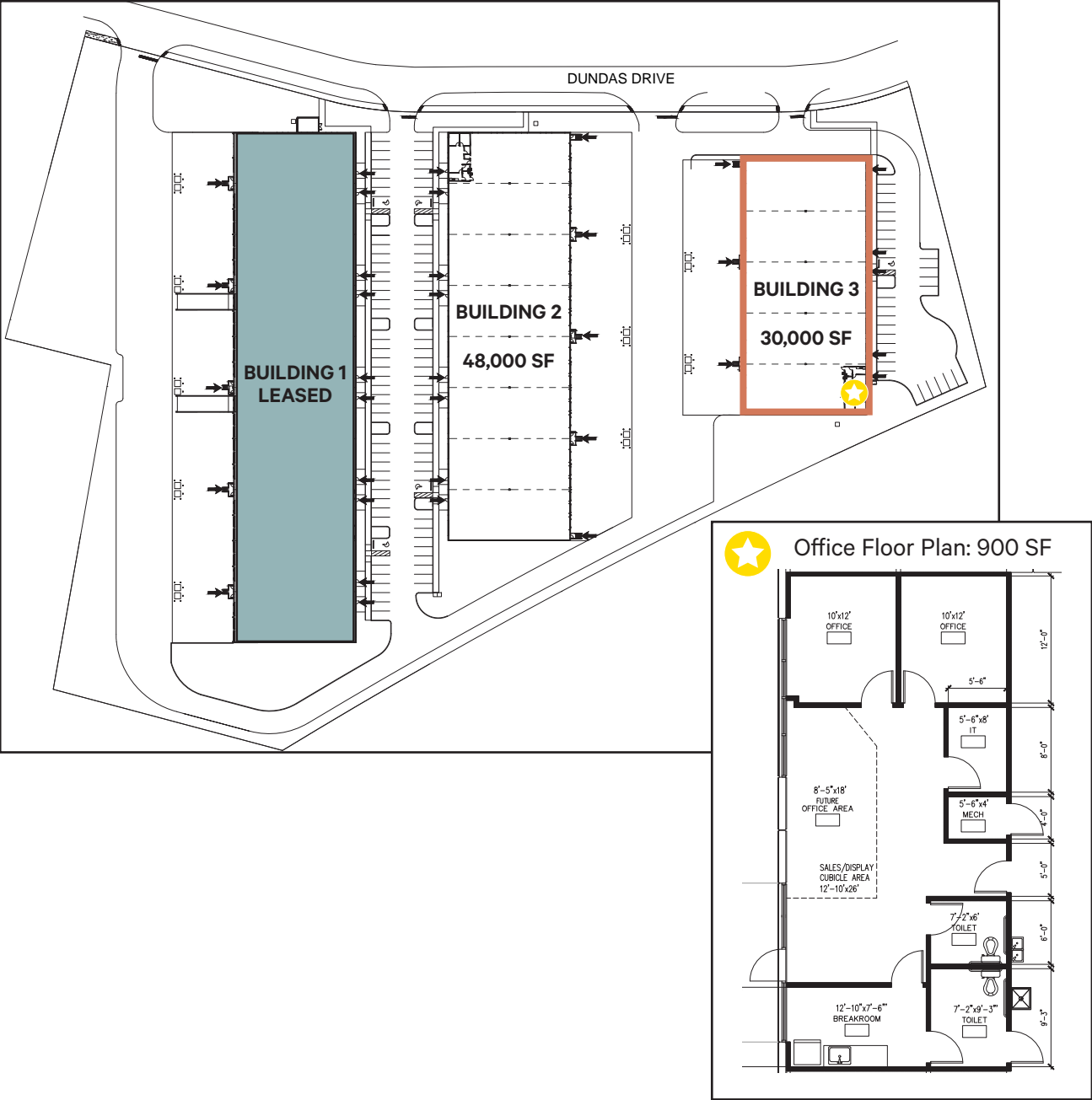




Interior Office Space

Building 3: ±30,000 SF Available

Available SF	30,000 SF
Minimum Suite Size	6,000 SF
Maximum Contiguous Suite Size	30,000 SF
Load Configuration	Rear
Building Dimensions	120'd x 250'w
Column Spacing	50'w x 60'd
Office	900 SF
Electrical	1,000A, 277/480V, 3 phase
Clear Height	26' clear
Warehouse Lighting	Stumble lighting
Fire Suppression	ESFR
Dock Doors (9'x10')	10
Ramp (12'x14')	5
Dock Apron	60' concrete
Truck Court	170' shared
Roof	.60 mil TPO with R-21 insulation
Auto Parking	.86 per 1000 SF

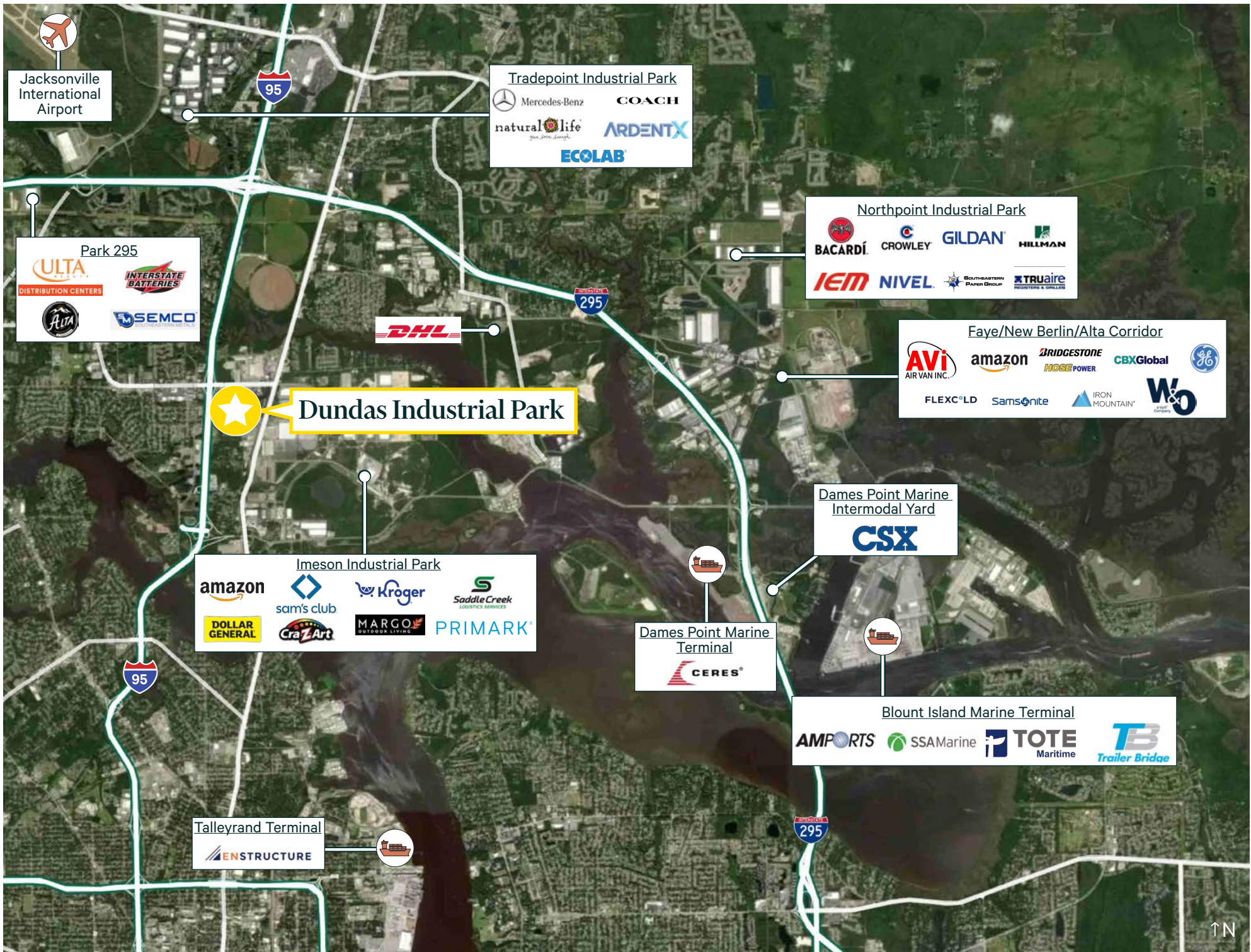






Interior Office Space





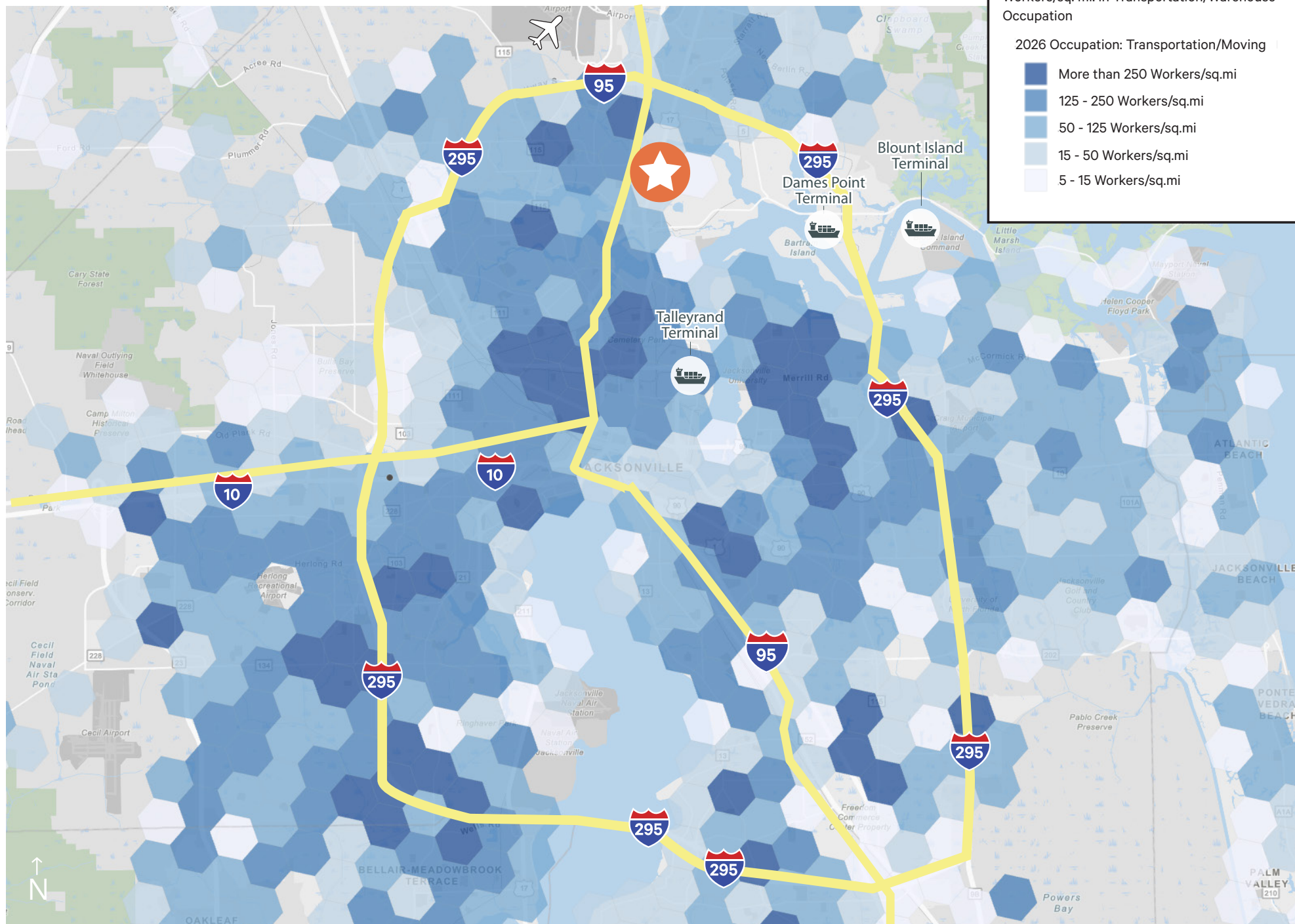
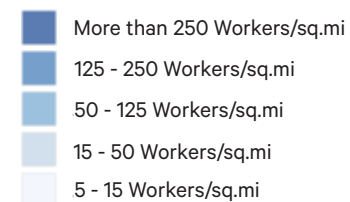


## Transportation/Warehousing Workforce Density

2026 Transportation/Warehouse Labor

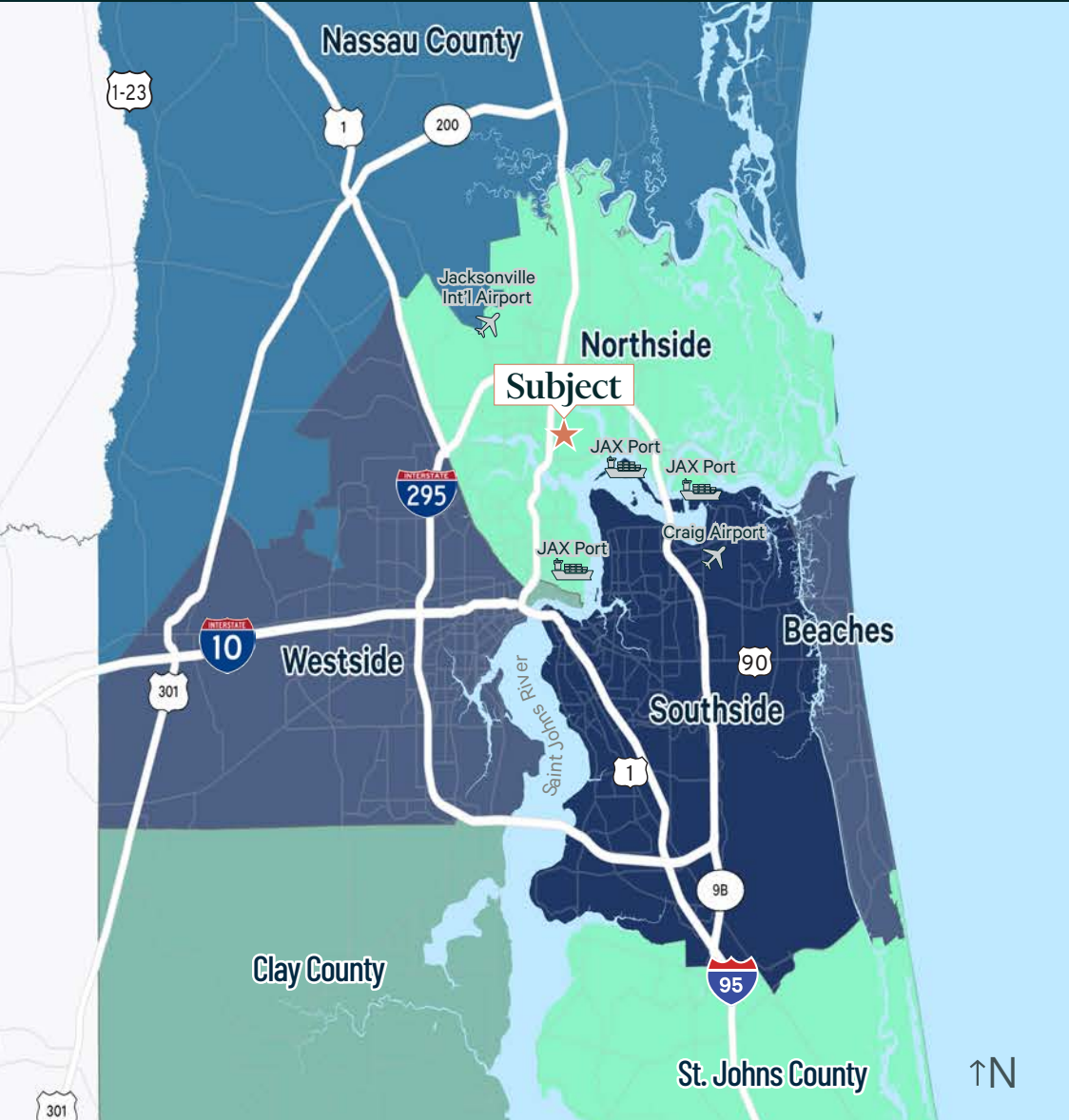
Workers/sq. mi. in Transportation/Warehouse Occupation

2026 Occupation: Transportation/Moving



440 Dundas Dr, Jacksonville, FL 32218

For Lease



Points of Interest	Distance
I-95	0.8 miles
I-295	2.8 miles
Jacksonville International Airport	6.6 miles
Jaxport   Talleyrand	7.5 miles
Jaxport   Dames Point	7.5 miles
I-10	9 miles
Jaxport   Blount Island	9 miles
Norfolk Southern Intermodal	9.6 miles
CSX Intermodal	11.5 miles
FEC Intermodal	14.3 miles
Port of Savannah	134 miles
Port of Charleston	207 miles
Port of Tampa	233 miles

For More Information, Please Contact:

**Kyle Fisher**  
First Vice President  
+1 864 540 5926  
kyle.fisher@cbre.com

**Kyle Murphy**  
Associate  
  
**Alliah Hardee**  
Associate

© 2025 CBRE, Inc. All rights reserved. This information has been obtained from sources believed reliable, but has not been verified for accuracy or completeness. You should conduct a careful, independent investigation of the property and verify all information. Any reliance on this information is solely at your own risk. CBRE and the CBRE logo are service marks of CBRE, Inc. All other marks displayed on this document are the property of their respective owners, and the use of such logos does not imply any affiliation with or endorsement of CBRE. Photos herein are the property of their respective owners. Use of these images without the express written consent of the owner is prohibited.