



## Concourse II

5210 Belfort Road  
Jacksonville, Florida 32256

### Property Highlights

- 3 Buildings surrounding a lushly landscaped courtyard, gazebo and water feature
- Newly renovated lobby areas
- Solid cherry lobby entrances
- High volume ceilings
- Class A finishes throughout
- Concourse Cafe on-site
- On-site workout facility
- Frontage on Interstate 95
- Easy access to Butler Boulevard, Belfort Road and Interstate 95

### Property Description

The Concourse's unique master plan features three buildings clustered around an open-air gathering place. This outdoor "people place" is designed to give the occupants of the project an area to congregate, relax and enjoy the serenity of the peaceful setting. This area includes a large patio or terrace area with seating and pedestrian space overlooking a large lake. The project is easily visible from I-95 and is recognized as one of Jacksonville's premier suburban office addresses.

#### AVAILABLE SPACES

Space	Lease Rate	Size (SF)
<b>Suite 120</b>	\$24.00 SF/yr	1,668
<b>Suite 130</b>	\$24.00 SF/yr	1,634
<b>Suite 140</b>	\$24.00 SF/yr	7,332
<b>Suite 200</b>	\$24.00 SF/yr	17,798 - 22,010
<b>Suite 210</b>	\$24.00 SF/yr	4,212 - 22,010
<b>Suite 310</b>	\$24.00 SF/yr	1,257 - 4,328
<b>Suite 320</b>	\$24.00 SF/yr	3,071 - 4,328

For more information



**Patrick Carney**

O: 904 404 4456  
pc@naihallmark.com



**Sydney Miles**

O: 904 363 9002  
sm@naihallmark.com

NO WARRANTY OR REPRESENTATION, EXPRESS OR IMPLIED, IS MADE AS TO THE ACCURACY OF THE INFORMATION CONTAINED HEREIN, AND THE SAME IS SUBMITTED SUBJECT TO ERRORS, OMISSIONS, CHANGE OF PRICE, RENTAL OR OTHER CONDITIONS, PRIOR SALE, LEASE OR FINANCING, OR WITHDRAWAL WITHOUT NOTICE, AND OF ANY SPECIAL LISTING CONDITIONS IMPOSED BY OUR PRINCIPALS. NO WARRANTIES OR REPRESENTATIONS ARE MADE AS TO THE CONDITION OF THE PROPERTY OR ANY HAZARDS CONTAINED THEREIN ARE ANY TO BE IMPLIED.

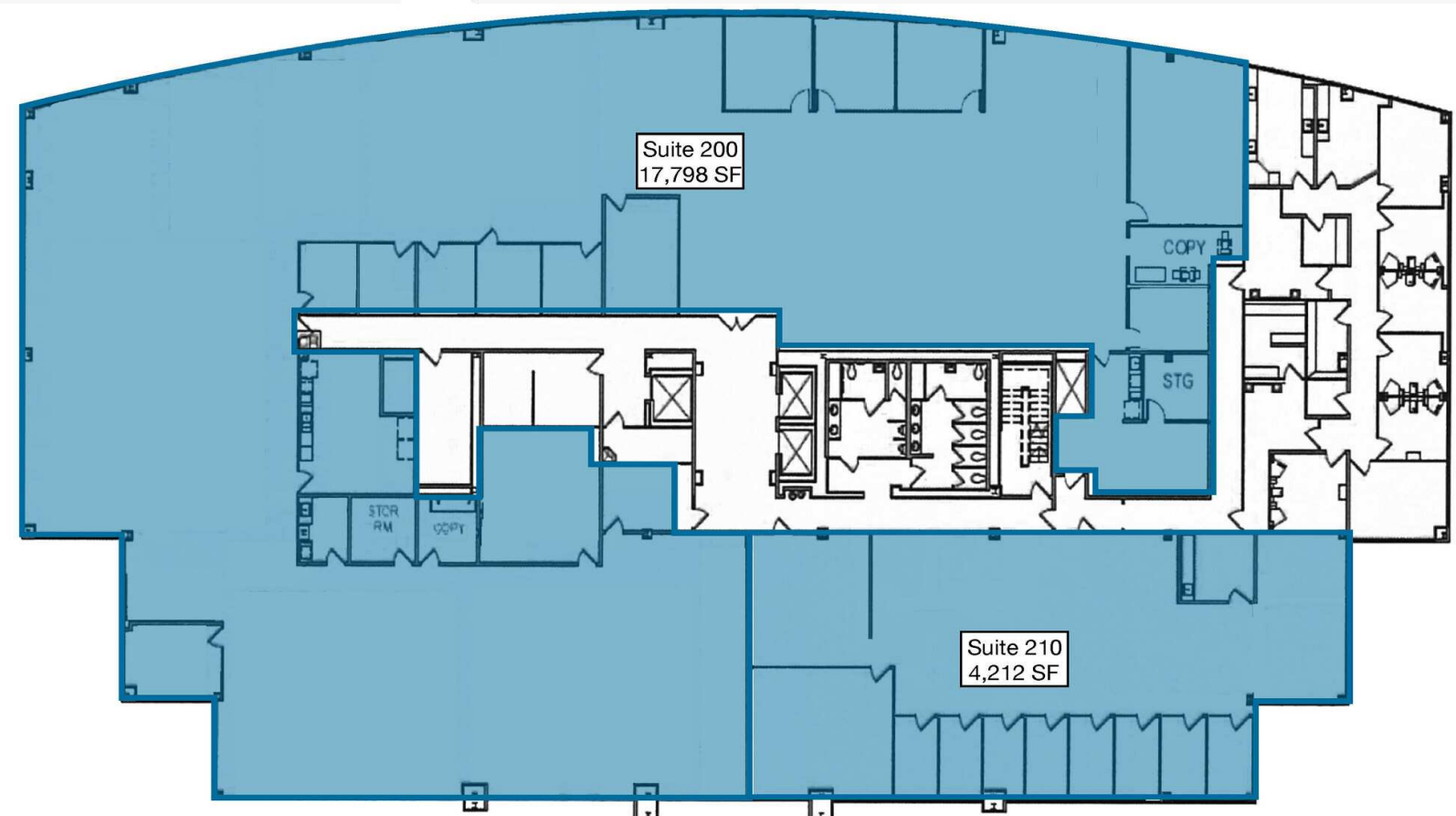
200 Riverside Avenue  
Jacksonville, FL 32202  
904 363 9002 tel  
[www.naihallmark.com](http://www.naihallmark.com)



## Floor Plans

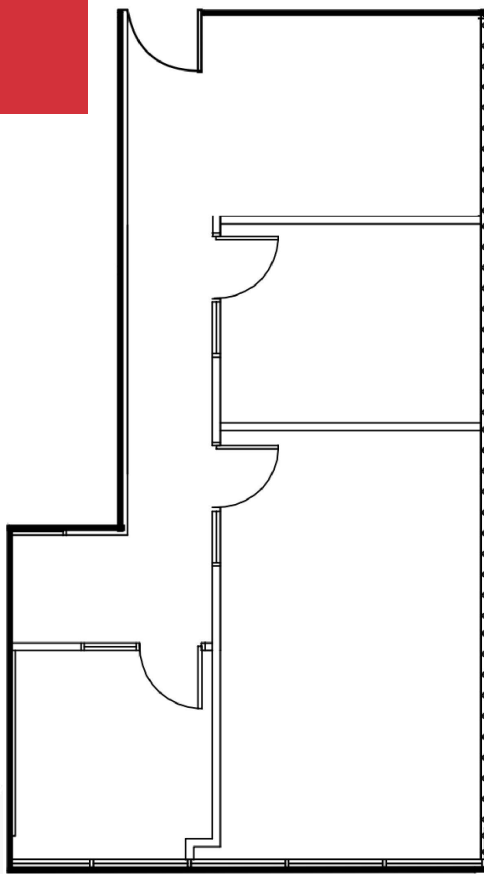


First Floor

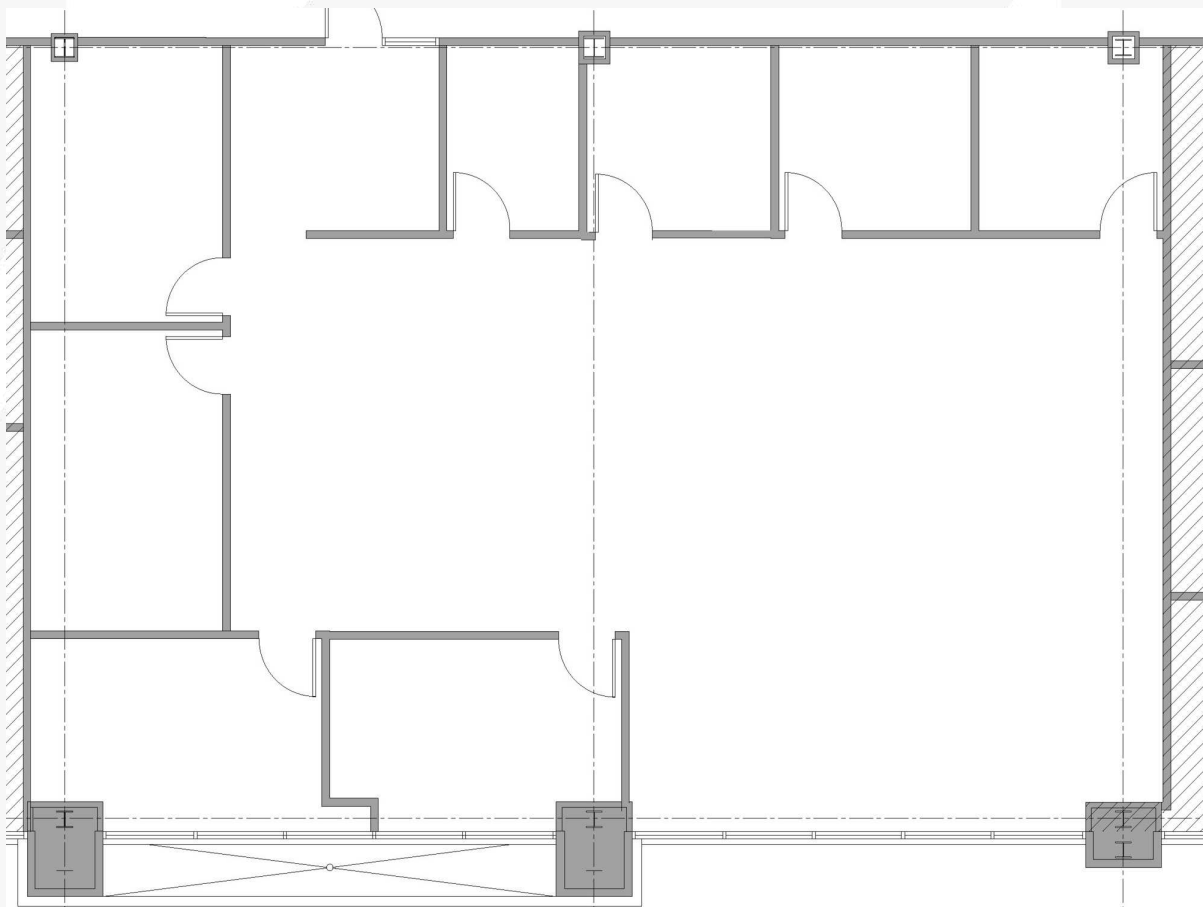


Second Floor

## Floor Plans



Suite 310 - 1,257 SF



Suite 320 - 3,071 SF



## Additional Photos





## Location Maps

