

W WATERS AVENUE

50,000 +/- SF AVAILABLE
FOR LEASE OR SALE



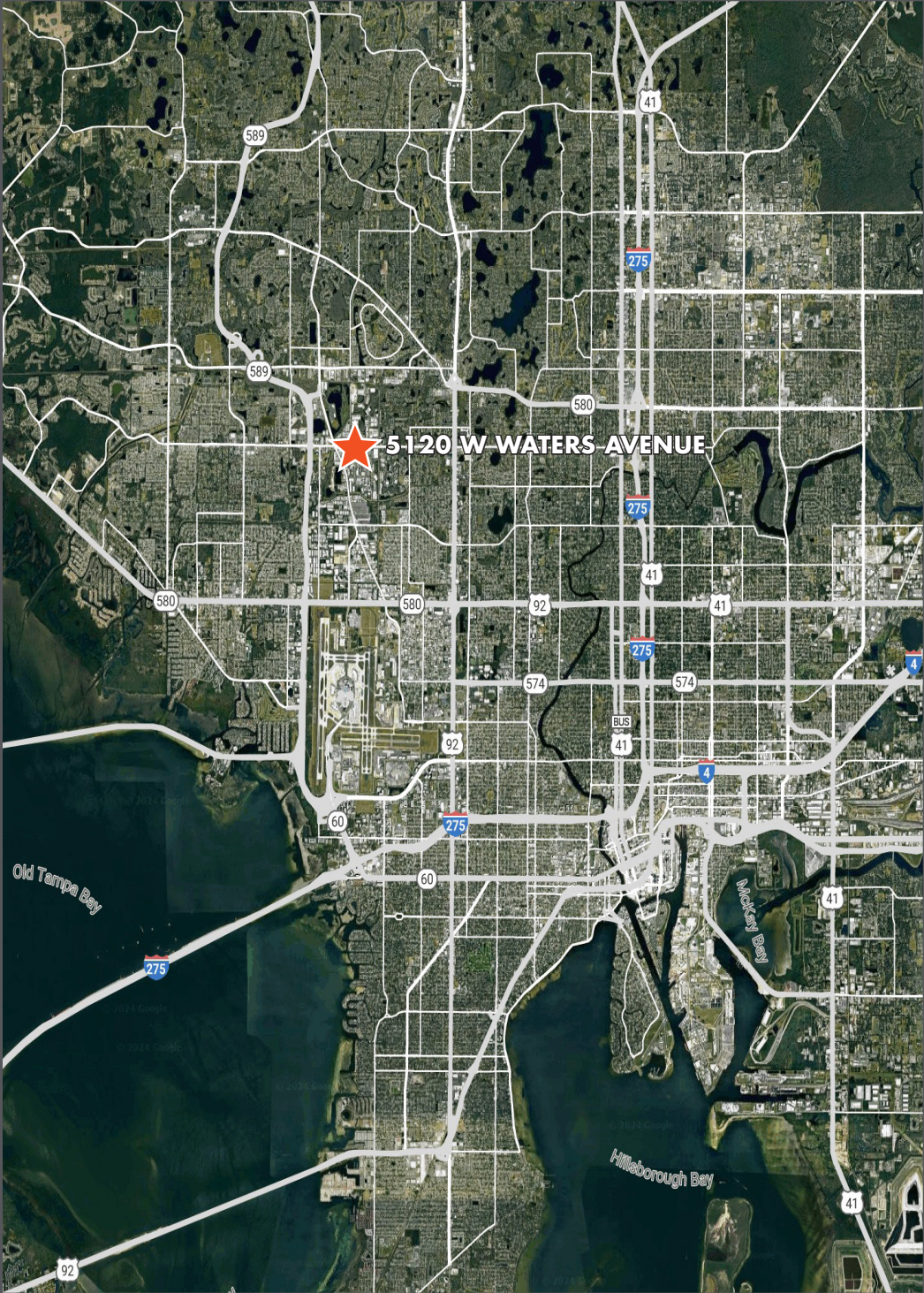
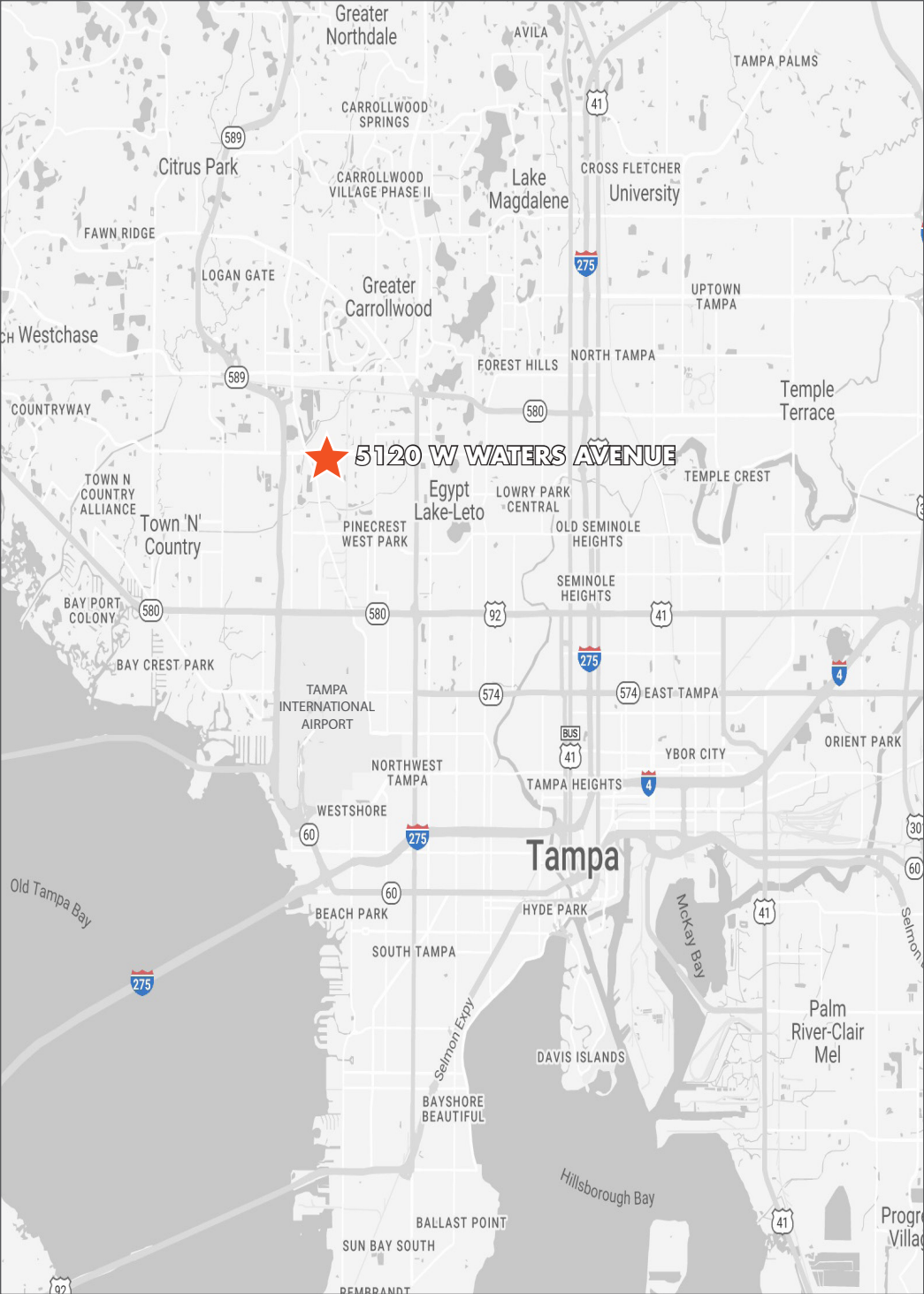
SAVARESE CIRCLE

SAVARESE CIRCLE

Map data ©2024 G

5120 W WATERS AVENUE | TAMPA, FL
50,000 +/- SF ON 4.18 ACRES

FOUNDRY
COMMERCIAL



FOR MORE INFORMATION:

JIMMY JOHNSON
jimmy.johnson@foundrycommercial.com
813.404.9685

CAITLIN QUINLAN
caitlin.quinlan@foundrycommercial.com
540.550.2549



PROPERTY HIGHLIGHTS

- 50,000 ± Square Feet
- 4.18 Acres
- Zoned M
- Originally built as a manufacturing facility
 - * 2,000A 480/277V 3 Phase internal bldg. switchgear
 - * 1,000 KvA Transformer
 - * 150+ Ton A/C & 16 HVAC Rooftop Units
- High visibility on Waters Avenue
- 3 Truck Wells
- 180 Parking Spaces
 - * Potential for more parking during the week next door
- 4-minute drive to Dale Mabry Highway
- 5-minute drive to Veterans Expressway
- 15-minute drive to I-275
- Located in Hillsborough County opportunity zone



FOR MORE INFORMATION: JIMMY JOHNSON
jimmy.johnson@foundrycommercial.com
813.404.9685

CAITLIN QUINLAN
caitlin.quinlan@foundrycommercial.com
540.550.2549

FOUNDRY
COMMERCIAL



FOR MORE INFORMATION:

JIMMY JOHNSON
jimmy.johnson@foundrycommercial.com
813.404.9685

CAITLIN QUINLAN
caitlin.quinlan@foundrycommercial.com
540.550.2549



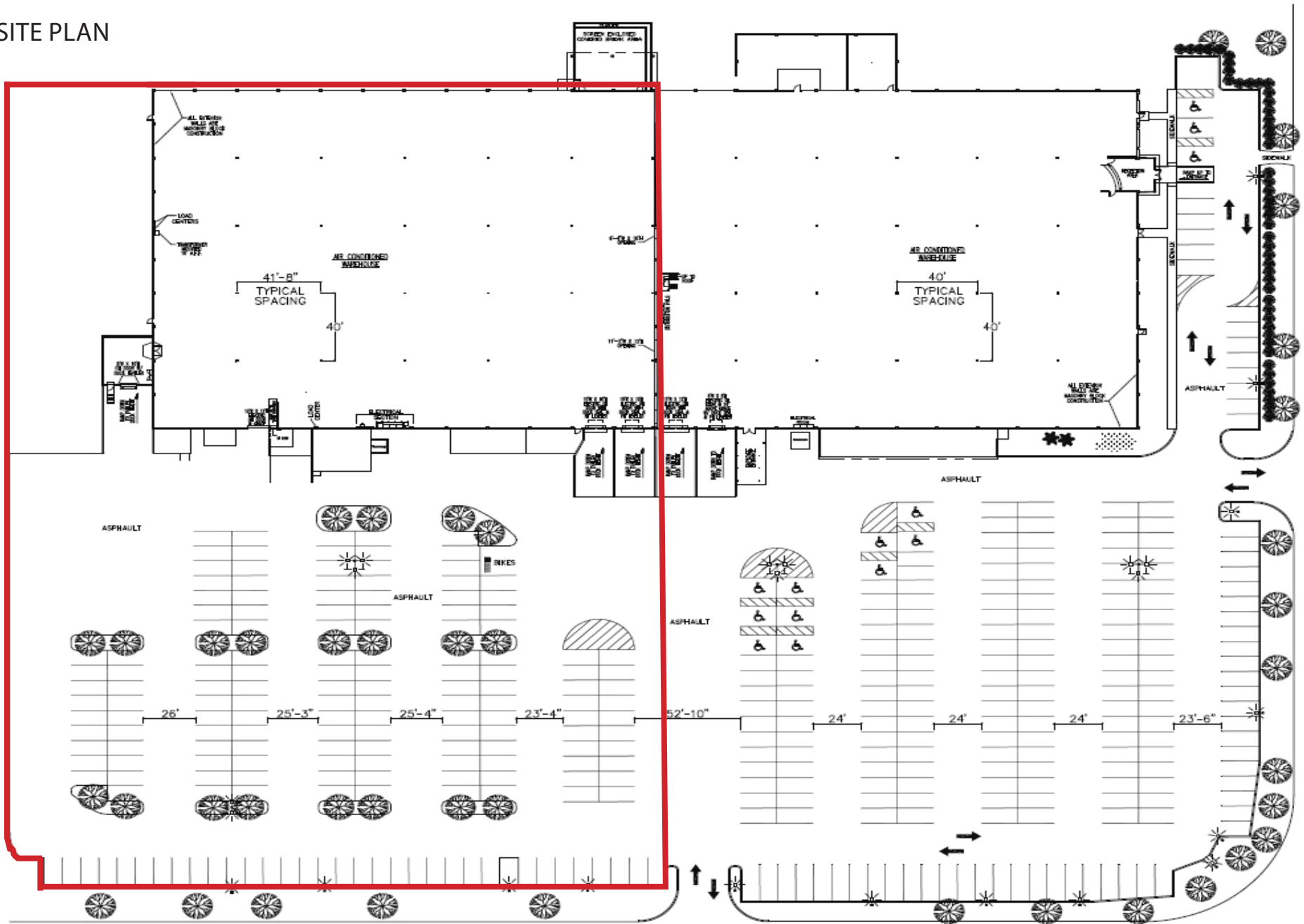


FOR MORE INFORMATION: JIMMY JOHNSON
jimmy.johnson@foundrycommercial.com
813.404.9685

CAITLIN QUINLAN
caitlin.quinlan@foundrycommercial.com
540.550.2549



SITE PLAN

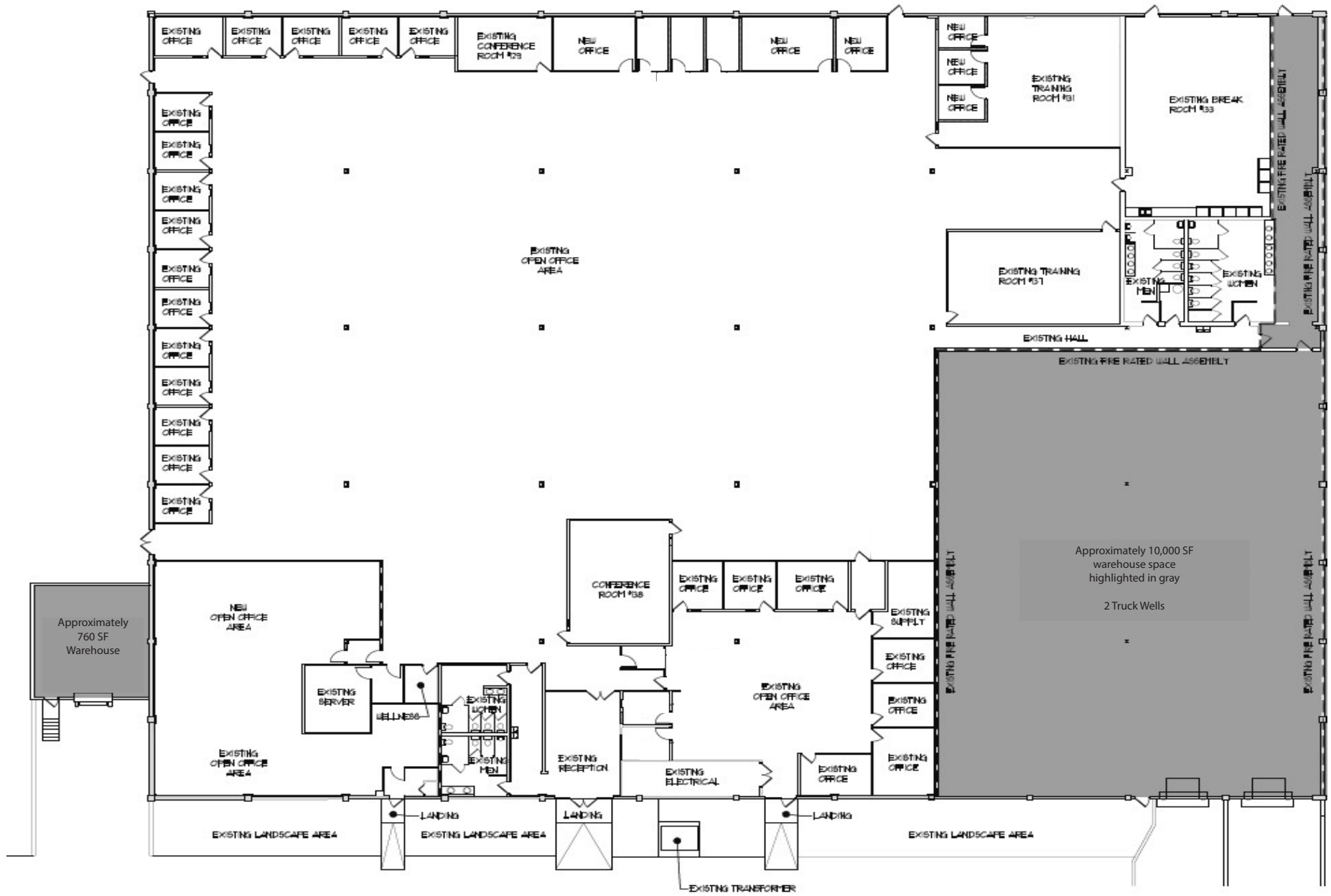


FOR MORE INFORMATION: JIMMY JOHNSON
 jimmy.johnson@foundrycommercial.com
 813.404.9685

CAITLIN QUINLAN
 caitlin.quinlan@foundrycommercial.com
 540.550.2549



FLOOR PLAN



FOR MORE INFORMATION: JIMMY JOHNSON
 jimmy.johnson@foundrycommercial.com
 813.404.9685

CAITLIN QUINLAN
 caitlin.quinlan@foundrycommercial.com
 540.550.2549