

# GRAND MISSION PLAZA

## SECOND-GENERATION RESTAURANT SPACE

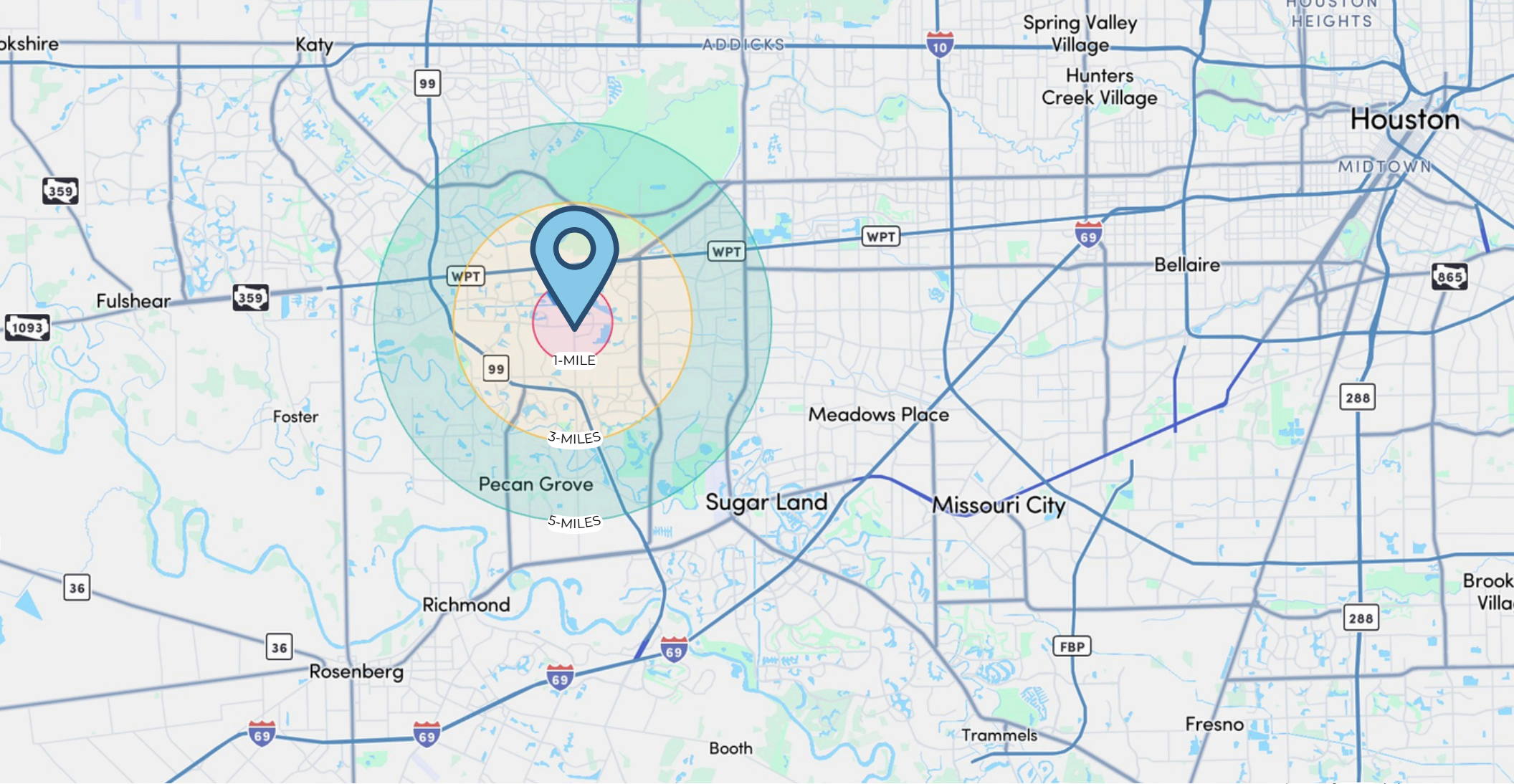


**±2,300 SF | FOR LEASE**

8620 Grand Mission Blvd, **Richmond, TX** 77407

**832-602-3017**

**rent77066@yahoo.com**



\*Data from AlphaMaps

## AREA DEMOGRAPHICS:

	1-MILE	3-MILES	5-MILES
POPULATION	14,568	119,454	267,125
AVG. HH INCOME	\$108.9K	\$116.8K	\$123.9K

# ±2,300 SF | FOR LEASE

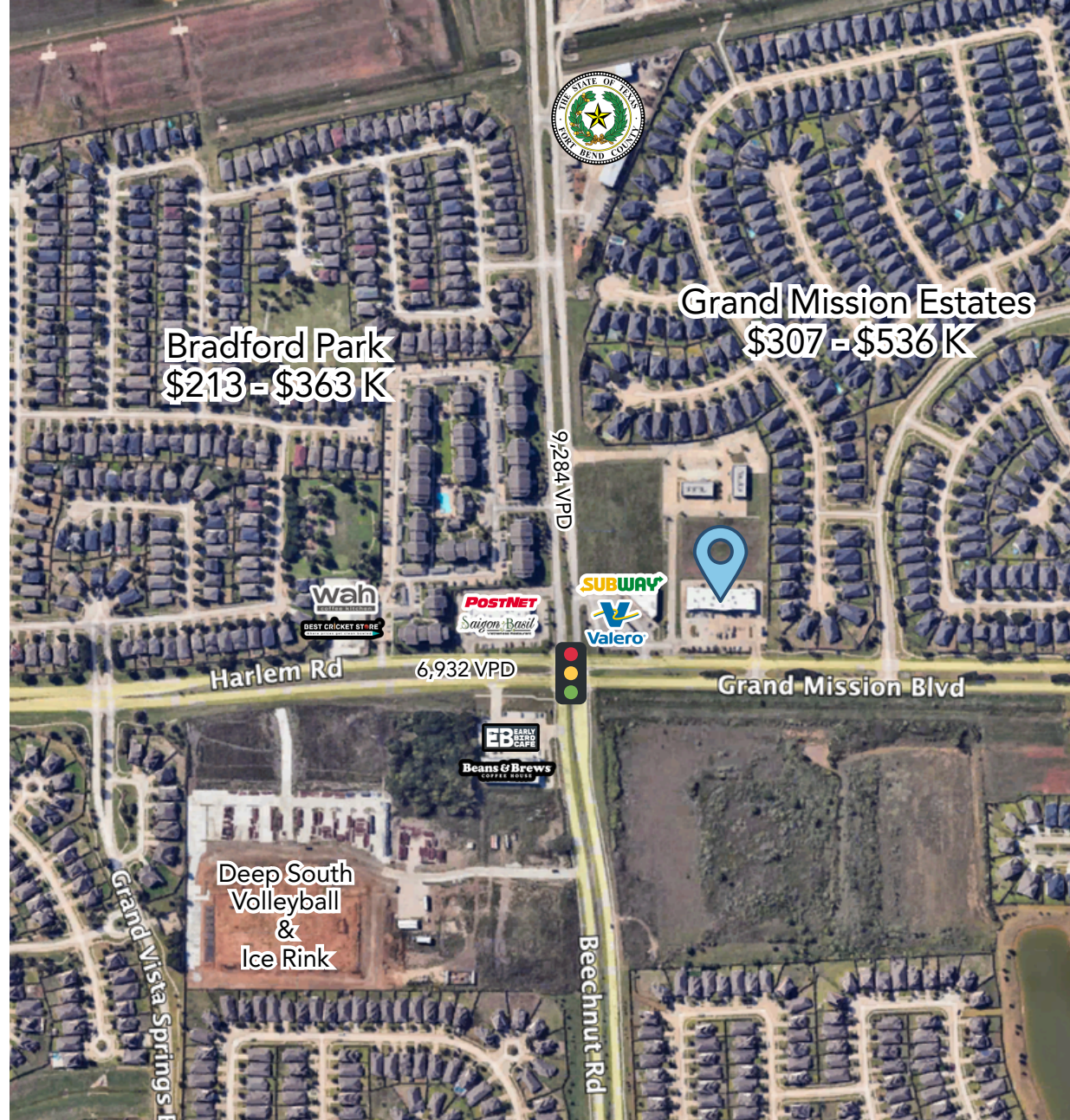
8620 Grand Mission Blvd, **Richmond, TX** 77407

**832-602-3017**  
**rent77066@yahoo.com**

# RICHMOND LOCATION

LOCATED IN THE  
**GRAND MISSION**  
MASTER PLANNED

Completed in **2017**, this **14,525 SF** freestanding building is strategically located in the heart of the **Grand Mission master-planned community**. With approximately **1,383 nearby homes** and 61 commercial acres integrated into the development, the site is supported by a **strong residential foundation** and expanding retail presence in one of the area's fastest-growing, **high-income corridors**.



**±2,300 SF | FOR LEASE**

8620 Grand Mission Blvd, **Richmond, TX** 77407

**832-602-3017**

**rent77066@yahoo.com**

# CENTER TENANTS:

M&T'S LIQUOR

ALWAYS FIRST PHARMACY



GRAND MISSION DENTISTRY

GRAND MISSION DENTISTRY

SMOKER'S PLEASURE



## ±2,300 SF | FOR LEASE

8620 Grand Mission Blvd, **Richmond, TX** 77407

832-602-3017

rent77066@yahoo.com

End Cap Retail



# END CAP SECOND GENERATION RESTAURANT

WITH RESTROOMS AND PRIVATE OFFICE

**+GAS LINE**

**+GREASE TRAP**

**+3-COMPARTMENT SINK**

**+ RANGE HOODS**

**INCLUDED**



2nd Generation Restaurant Space



**±2,300 SF | FOR LEASE**

8620 Grand Mission Blvd, **Richmond, TX** 77407

**832-602-3017**

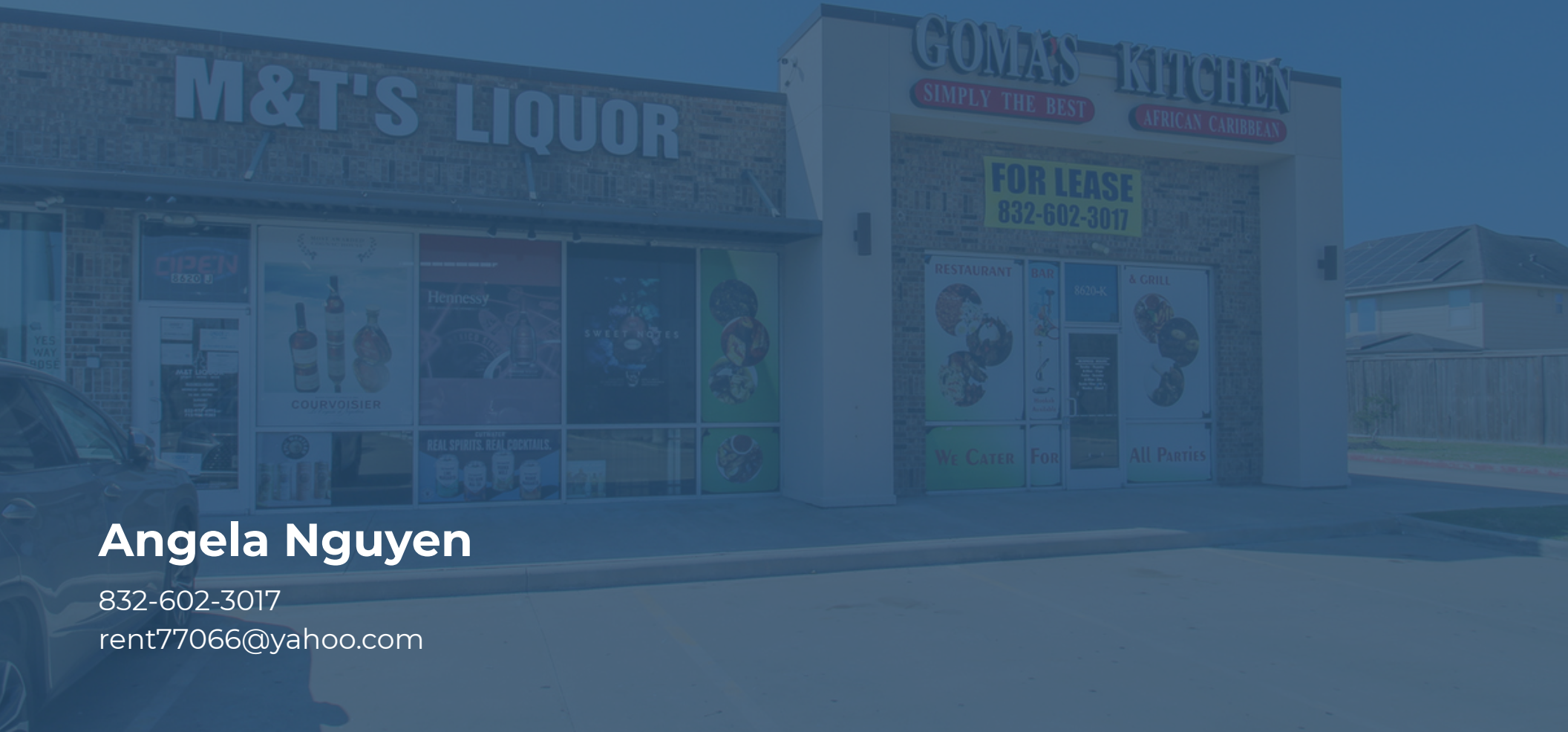
**rent77066@yahoo.com**

# GRAND MISSION PLAZA

±2,300 SF END CAP

---

- IDEAL FOR RESTAURANT
  - (2ND-GEN SPACE)
- IDEAL FOR MEDICAL
  - (WITH STRONG CO-TENANCY IN PLACE)



**Angela Nguyen**

832-602-3017

rent77066@yahoo.com