

FOR SALE

6,330 SF

2515 Bartlett St., Houston, TX 77098



Ryan Hartsell
rhartsell@oxfordcres.com
(281) 923-5660

Perry Mazzone
pmazzone@oxfordcres.com
(713) 401-8896

2900 Wesleyan Street, Ste 620
Houston, Texas 77027
713-647-6400
info@oxfordcres.com

Oxford
partners

PROPERTY HIGHLIGHTS

Size 6,330 SF Two-Story Retail/Office/Warehouse Building

- 1st Floor: 3,756 SF
- 2nd Floor: 2,574 SF

Land: 5,000 SF

Price \$1,550,000

Location

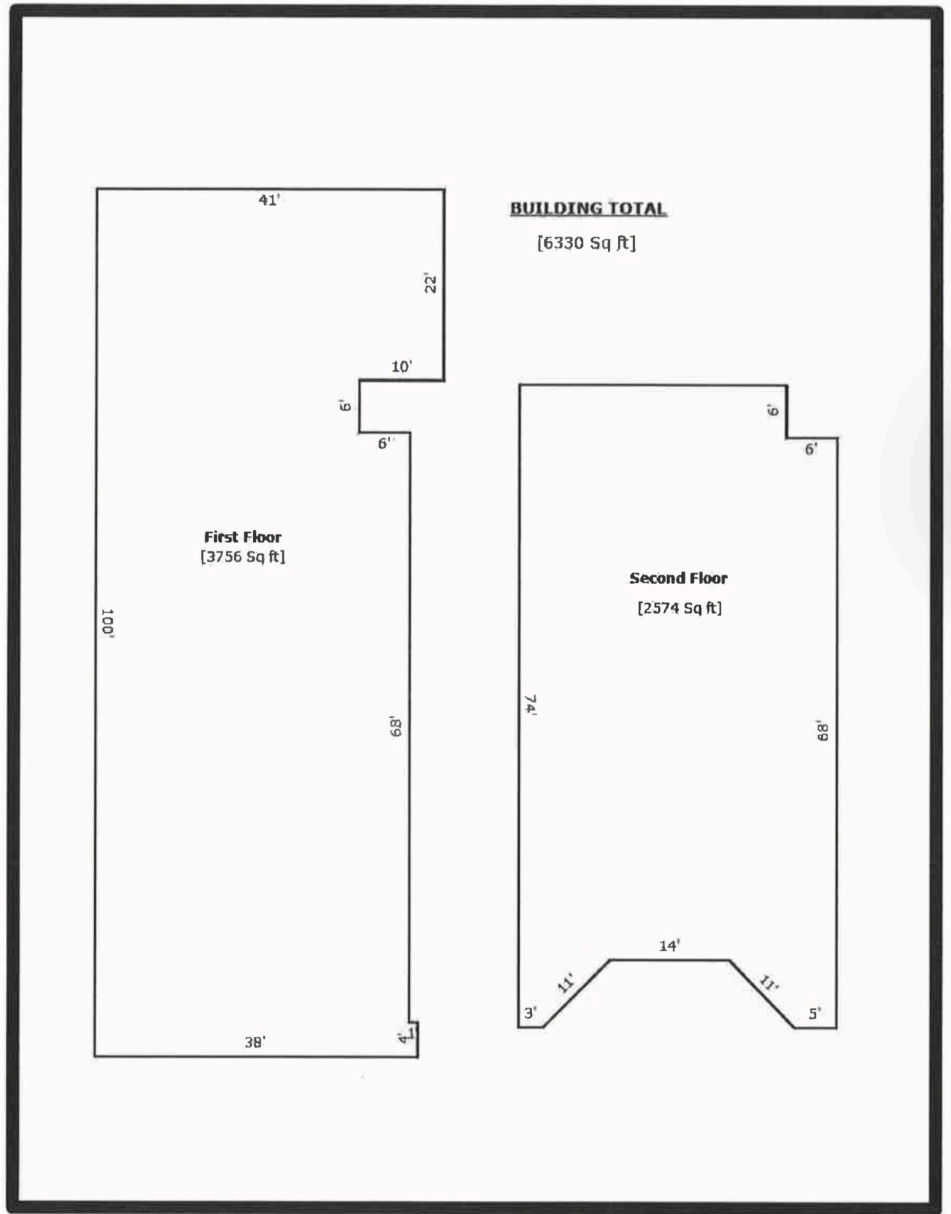
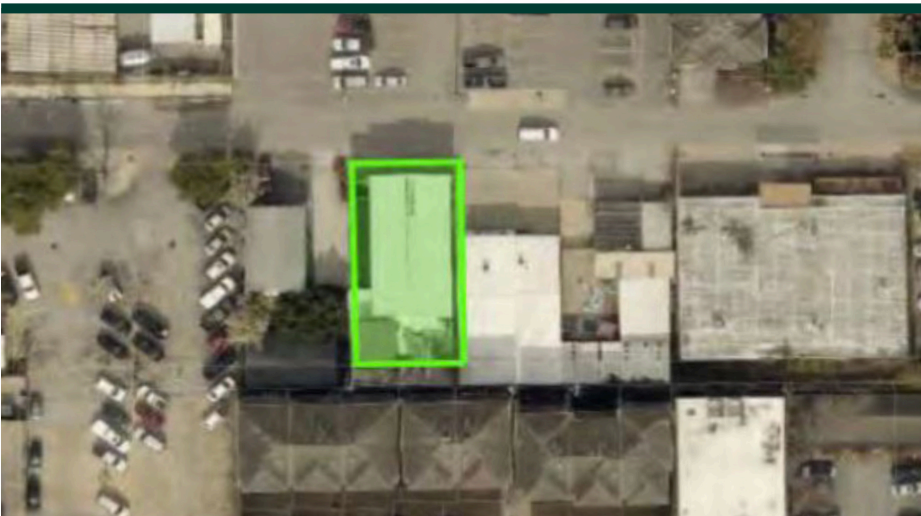
- Located in Rice Village Area
- Half block off Kirby Drive
- Convenient access to Hwy 59, Medical Center, Downtown, Museum District, Galleria

Parking 7-9 Total

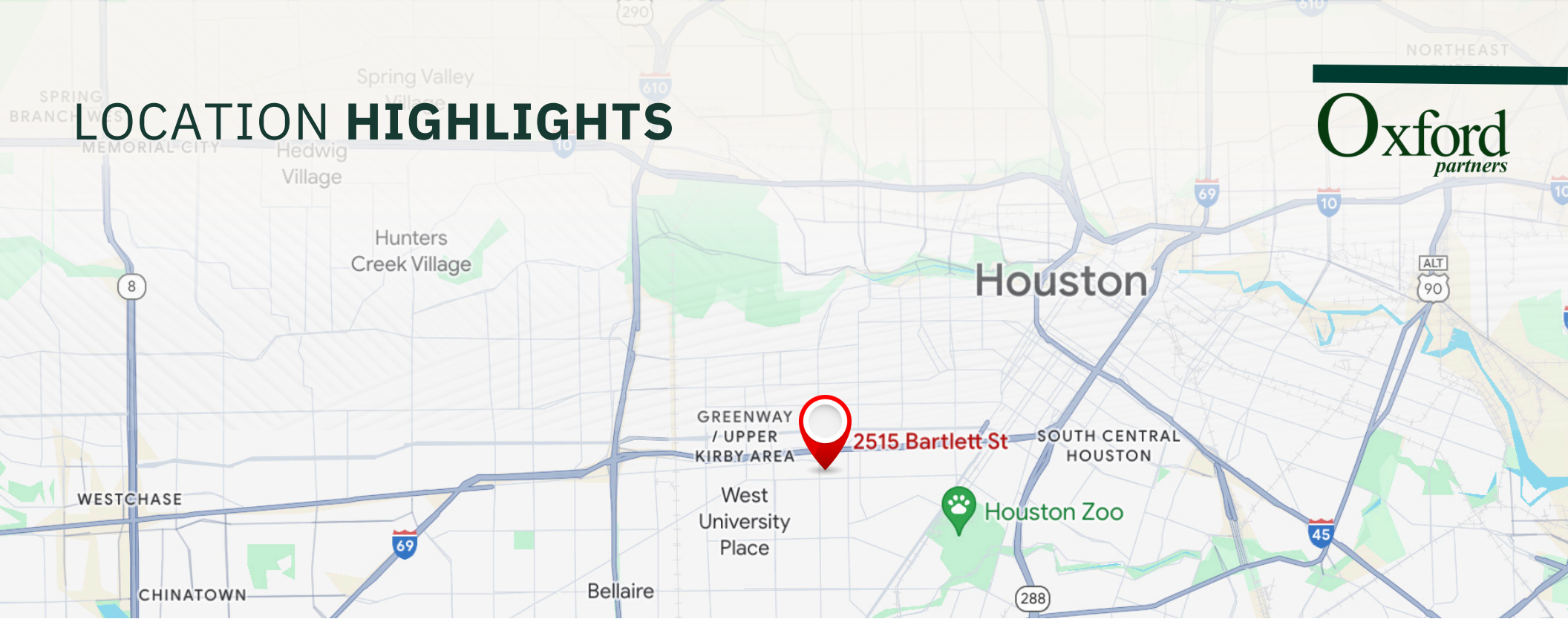
- 2 Spots Up Front
- 5-7 Spots Inside Warehouse
- Tandem Parking Available

Property Details

<p>1st Floor:</p> <ul style="list-style-type: none"> ◦ Reception Area ◦ Showroom ◦ Office ◦ Break Area ◦ Restroom 	<p>2nd Floor:</p> <ul style="list-style-type: none"> ◦ Showroom ◦ Individual Office ◦ Restroom
--	---



LOCATION HIGHLIGHTS

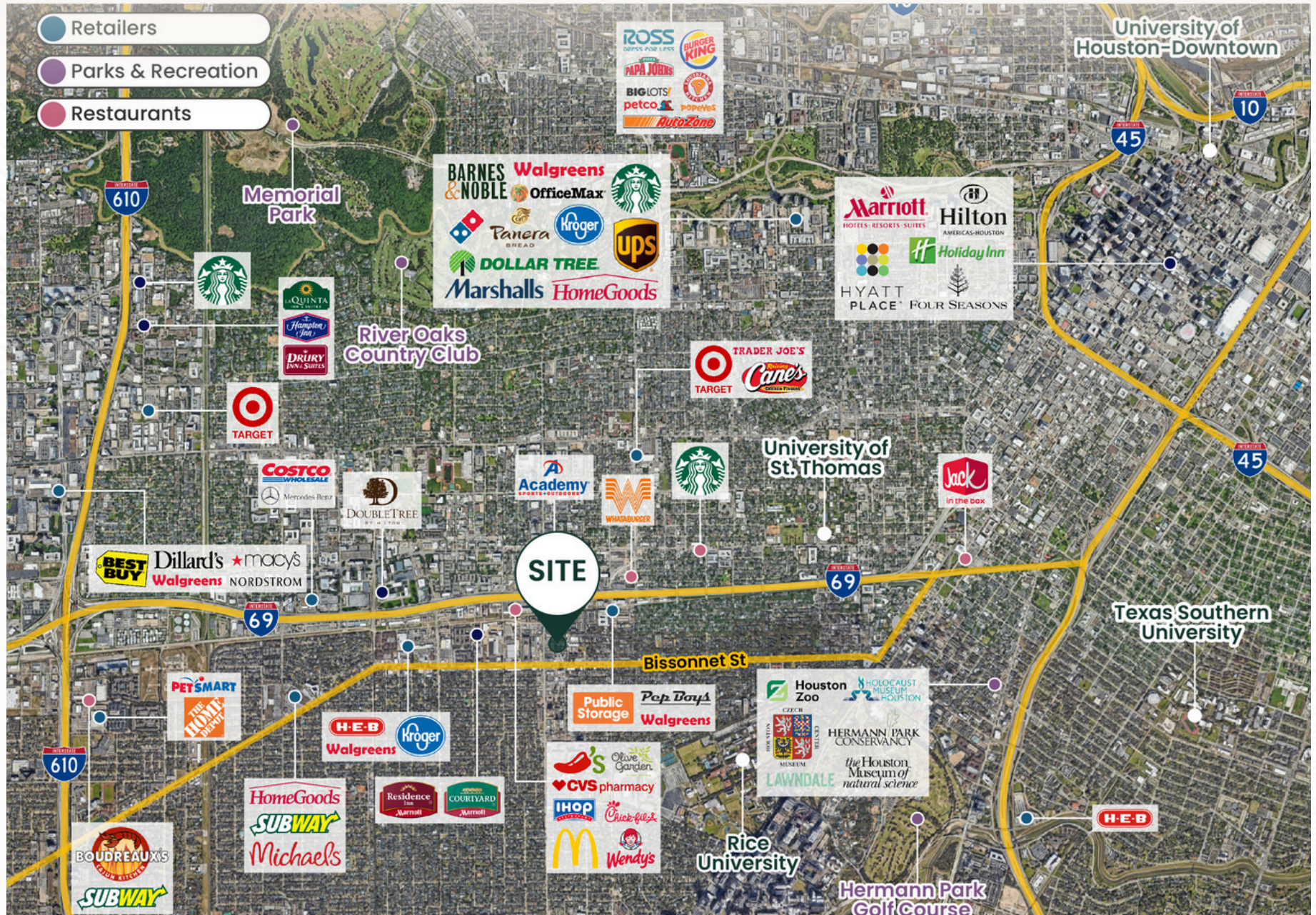


2515 BARTLETT ST.
HOUSTON, TX 77098

RYAN HARTSELL
(281) 923-5660 | rhartsell@oxfordcres.com

PERRY MAZZONE
(713) 401-8896 | pmazzone@oxfordcres.com

AERIAL



PHOTOS

