

# 10788 CIVIC CENTER DR, RANCHO CUCAMONGA

## OFFICE SUITES AVAILABLE



### Property Description

Centrally located professional office space often said to be one of the nicest office buildings in the Inland Empire. Steps away from Rancho Cucamonga City Hall and Courthouse and close proximity to the Ontario Airport, restaurants, retail, and 210, 10, and 15 freeways. Month-to-month rental agreements available and include receptionist answering service during business hours, all utilities, high-speed internet, phone system, two first floor conference rooms by reservation, large lobby for waiting clients, easily accessible and ample parking, janitorial service, and full access to private tennis and basketball courts. Ideal location for attorneys, web-based businesses, insurance agents, accountants, real estate agents, and all working professionals.

### Features

- ✓ Includes Utilities, Internet, Janitorial & Phone
- ✓ Shared Conference Rooms & Kitchenette
- ✓ Month-to-Month Rental Agreements Available
- ✓ Receptionist Answering Service
- ✓ Steps from City Hall & Courthouse
- ✓ Access to Private Tennis and Basketball Courts

**Jesse Hamilton**  
Maple CRE - Principal

☎ 626.429.5821  
✉ [jesse.hamilton@maplecre.com](mailto:jesse.hamilton@maplecre.com)  
🌐 [www.maplecre.com](http://www.maplecre.com)  
# DRE #01505110



maple  
— Commercial Real Estate —



## OFFICE SUITES AVAILABLE

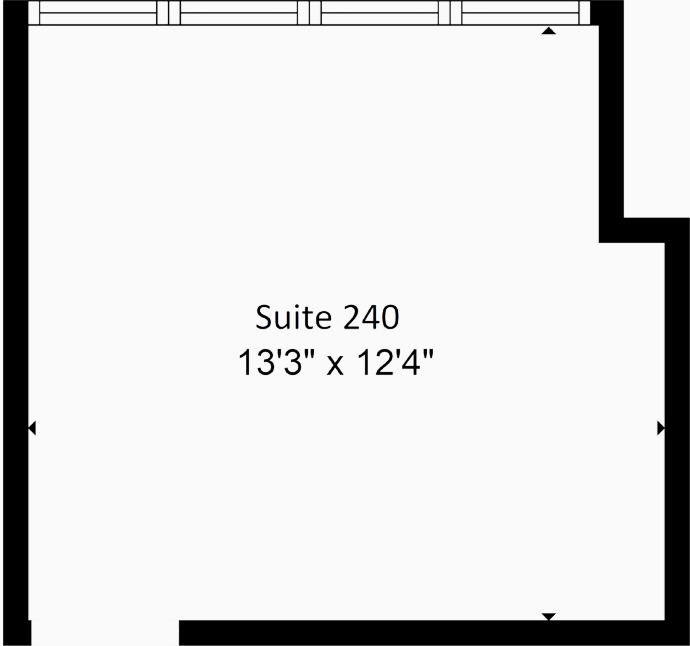
Suite #	Floor Location	Approximate SF	Unit Price	Description
Suite #240	2nd Floor	Appx - 150 SF	\$950.00 / Month	Executive Suite
Suite #250	2nd Floor	Appx - 150 SF	\$950.00 / Month	Executive Suite
Suite #260	2nd Floor	Appx - 150 SF	\$950.00 / Month	Executive Suite
Suite #210	2nd Floor	Appx - 450 SF	\$1,950.00 / Month	Executive Plus Suite



10788 CIVIC CENTER DR, RANCHO CUCAMONGA

# SUITE 240

- ✓ EXECUTIVE SUITE
- ✓ \$950.00 / MONTH
- ✓ 2ND FLOOR
- ✓ APPX - 150 SF

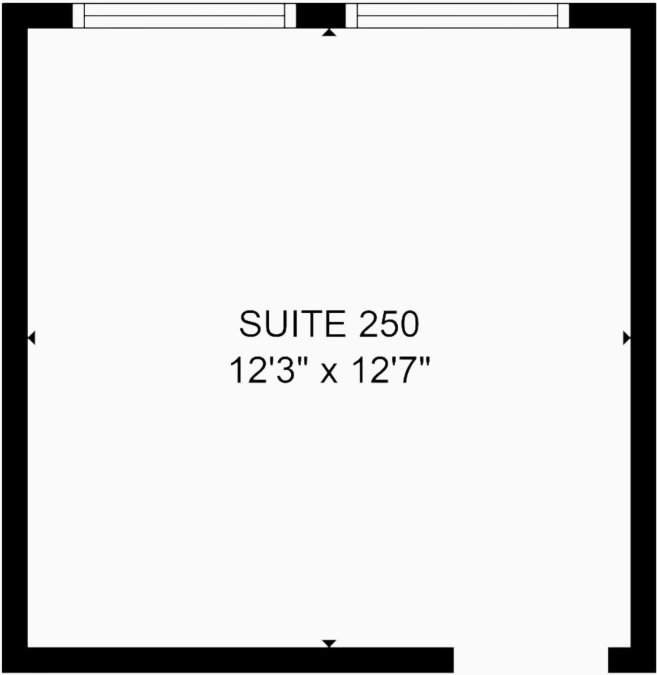


SQUARE FOOTAGE IS ESTIMATED AND NOT GUARANTEED

10788 CIVIC CENTER DR, RANCHO CUCAMONGA

# SUITE 250

- ✓ EXECUTIVE SUITE
- ✓ \$950.00 / MONTH
- ✓ 2ND FLOOR
- ✓ APPX - 150 SF

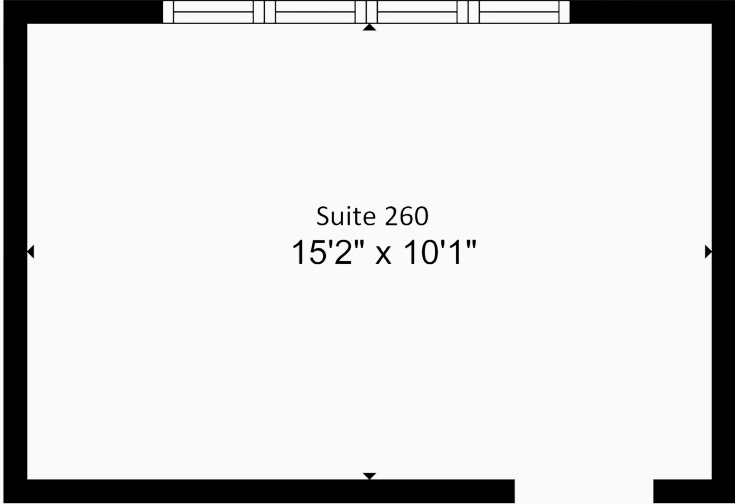


SQUARE FOOTAGE IS ESTIMATED AND NOT GUARANTEED

10788 CIVIC CENTER DR, RANCHO CUCAMONGA

# SUITE 260

- ✓ EXECUTIVE SUITE
- ✓ \$950.00 / MONTH
- ✓ 2ND FLOOR
- ✓ APPX - 150 SF

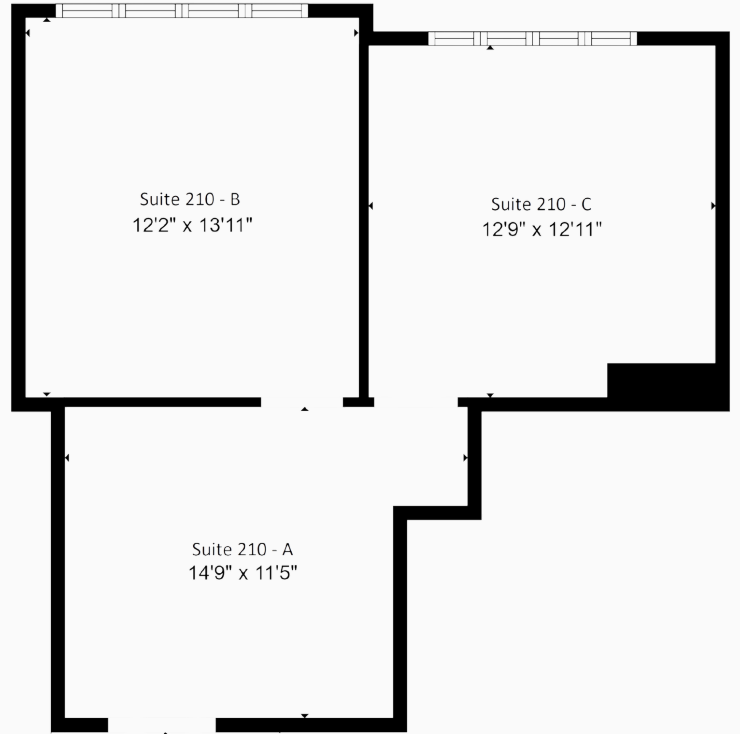


SQUARE FOOTAGE IS ESTIMATED AND NOT GUARANTEED

10788 CIVIC CENTER DR, RANCHO CUCAMONGA

# SUITE 210

- ✓ EXECUTIVE PLUS SUITE
- ✓ \$1,950.00 / MONTH
- ✓ 2ND FLOOR
- ✓ APPX - 450 SF



SQUARE FOOTAGE IS ESTIMATED AND NOT GUARANTEED

10788 CIVIC CENTER DR, RANCHO CUCAMONGA

# MASTER FLOOR PLAN



SQUARE FOOTAGE IS ESTIMATED AND NOT GUARANTEED