



**Keegan & Coppin**  
COMPANY, INC.

FOR LEASE

13692 ARNOLD DRIVE  
GLEN ELLEN, CA

**SONOMA VALLEY COMMERCIAL  
BUILDING FOR LEASE**

**YOUR  
NAME  
HERE**

Go beyond broker.

PRESENTED BY:

**JOEL JAMAN, PARTNER**  
LIC # 00857563 (707) 528-1400, EXT 233  
[JJAMAN@KEEGANCOPPIN.COM](mailto:JJAMAN@KEEGANCOPPIN.COM)



## PROPERTY DETAILS



13692 ARNOLD DRIVE,  
GLEN ELLEN, CA

**SONOMA VALLEY  
COMMERCIAL BUILDING  
FOR LEASE**

## PROPERTY INFORMATION

### HIGHLIGHTS

- Valley of the Moon / Downtown Glen Ellen Setting
- Approximately 925 sf of Space Available
- On-Site Parking
- Rear Patio Area
- Excellent Location with Easy Access to U.S. Highway 12
- Extensive Glassline with Abundant Natural Light
- Ideal for: Neighborhood Retail, Medical, Visitor Info Center, Restaurant, Professional Office

### OTHER FEATURES

- Street Frontage
- Approx 925 rsf
- 4 Office Areas
- Reception / Business Office
- Storage And IT Closet
- 2 Restrooms
- Central heat and AC
- Zoned LC, Limited Commercial

### LEASE TERMS

#### Rate

\$2,000 per month plus utilities

**Shown by Appointment Only**

#### PRESENTED BY:

JOEL JAMAN, PARTNER  
KEEGAN & COPPIN CO., INC.  
LIC # 00857563 (707) 528-1400, EXT 233  
JJAMAN@KEEGANCOPPIN.COM



## PROPERTY VICINITY



13692 ARNOLD DRIVE,  
GLEN ELLEN, CA

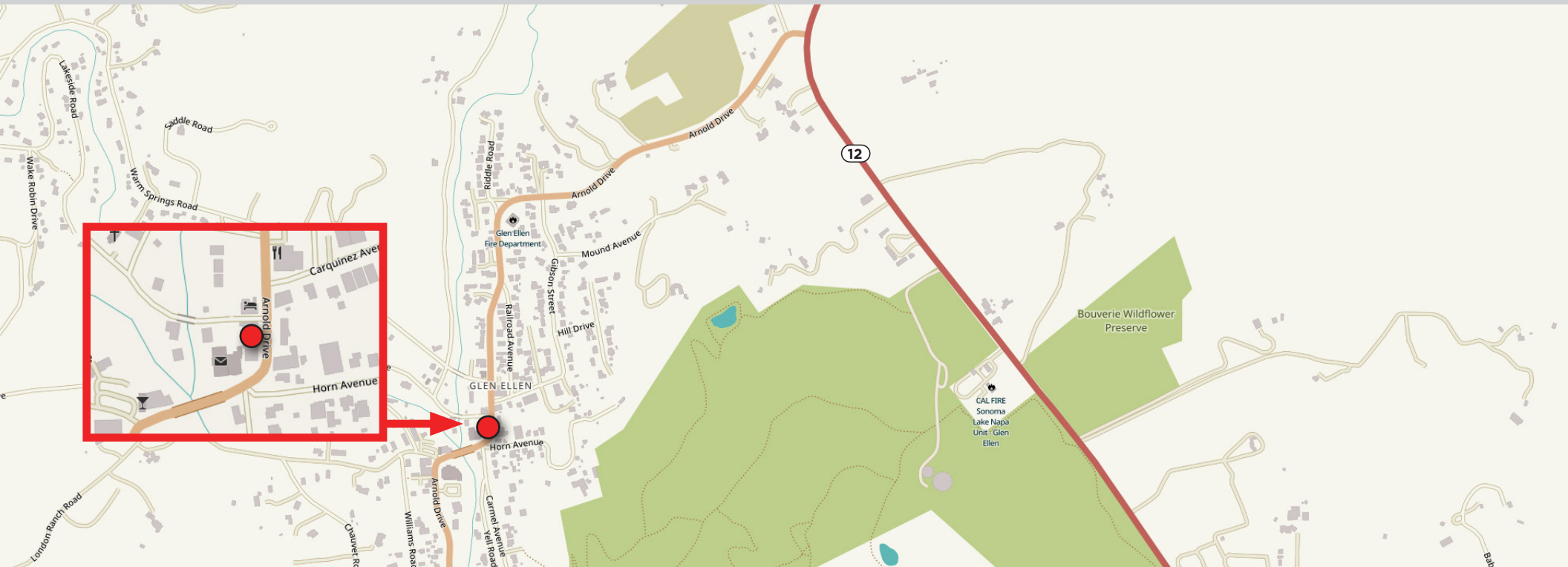
**SONOMA VALLEY  
COMMERCIAL BUILDING  
FOR LEASE**

### DESCRIPTION OF AREA

The village of Glen Ellen is home to many excellent restaurants and wineries.

### TRANSPORTATION ACCESS

- Easy access to Highway 12



### PRESENTED BY:

**JOEL JAMAN, PARTNER**  
**KEEGAN & COPPIN CO., INC.**  
LIC # 00857563 (707) 528-1400, EXT 233  
JJAMAN@KEEGANCOPPIN.COM

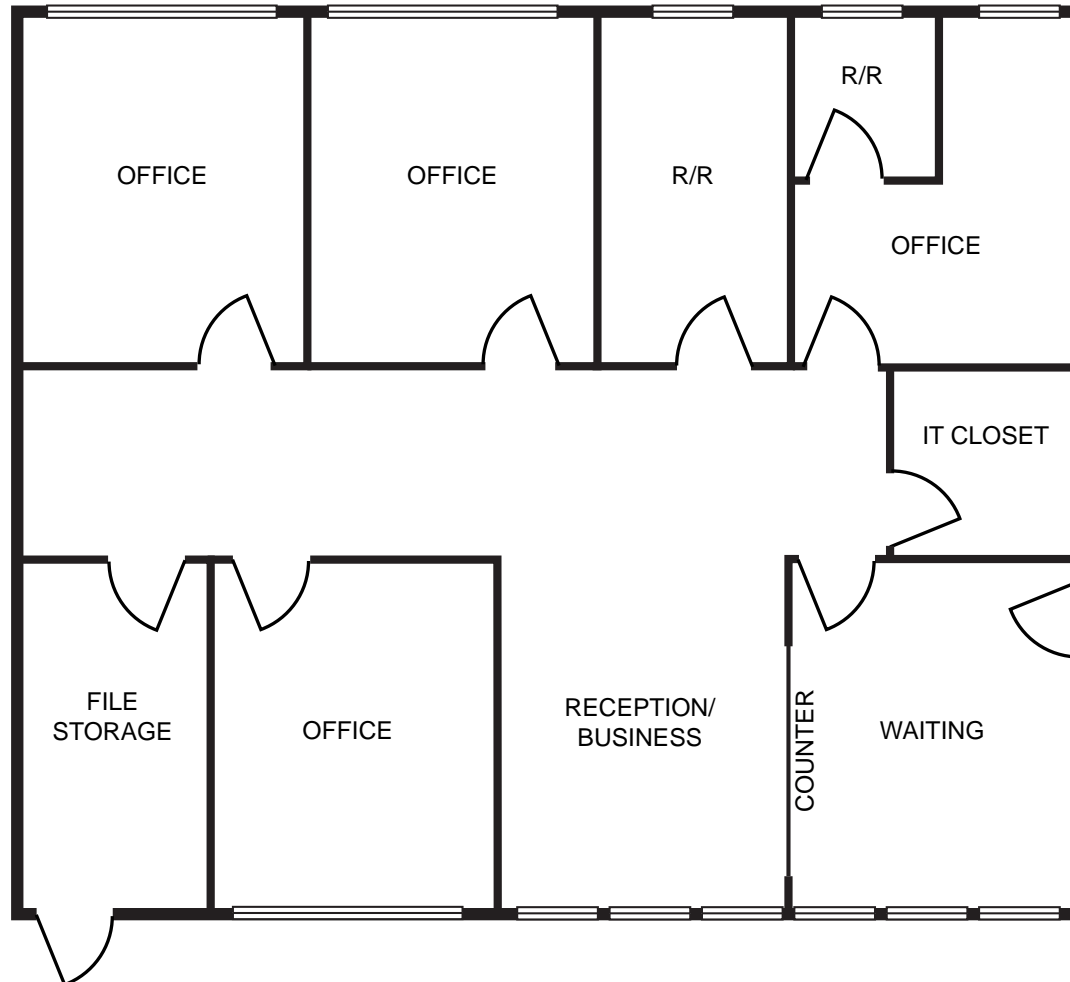


# FLOOR PLAN



13692 ARNOLD DRIVE,  
GLEN ELLEN, CA

**SONOMA VALLEY  
COMMERCIAL BUILDING  
FOR LEASE**



ARNOLD DR

NOT TO SCALE

PRESENTED BY:

JOEL JAMAN, PARTNER  
KEEGAN & COPPIN CO., INC.  
LIC # 00857563 (707) 528-1400, EXT 233  
JJAMAN@KEEGANCOPPIN.COM



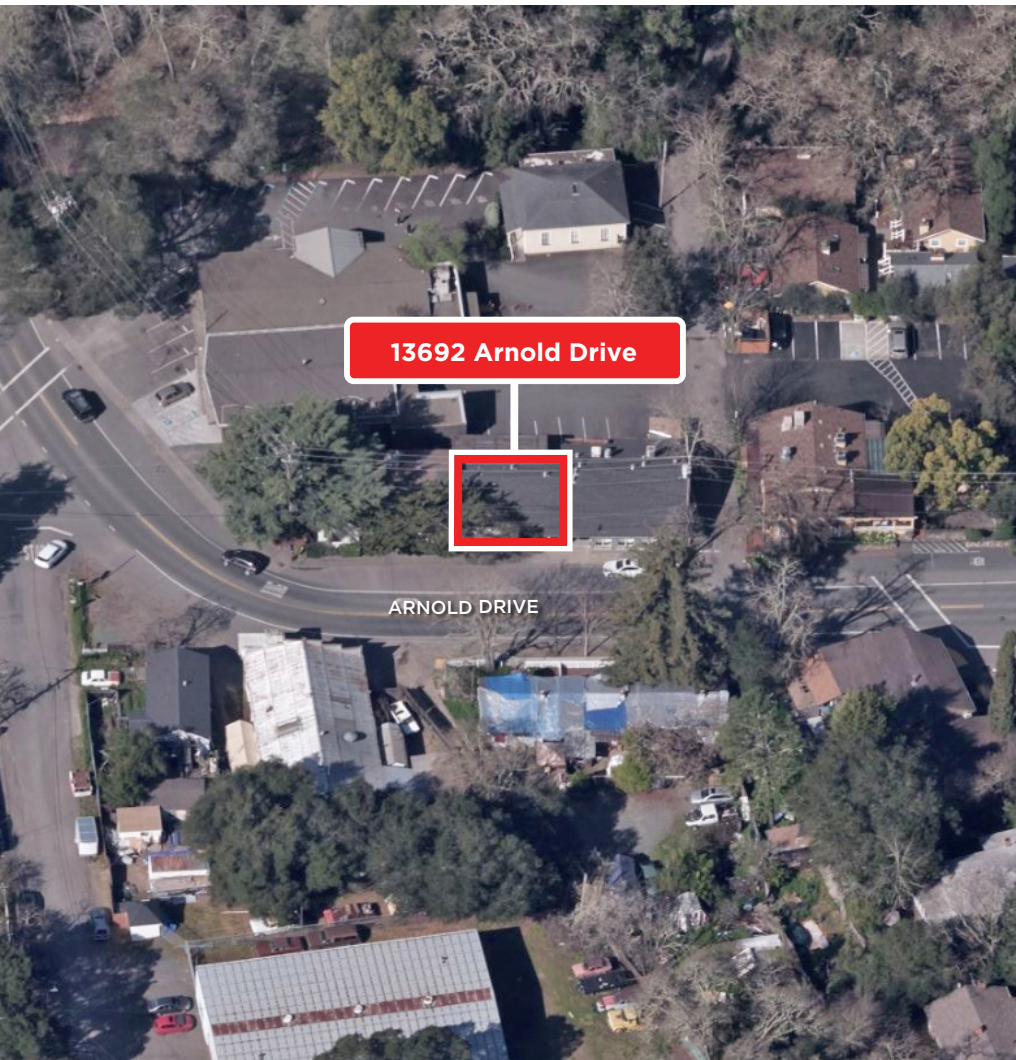


## PROPERTY PHOTOS



13692 ARNOLD DRIVE,  
GLEN ELLEN, CA

**SONOMA VALLEY  
COMMERCIAL BUILDING  
FOR LEASE**



**PRESENTED BY:**

**JOEL JAMAN, PARTNER  
KEEGAN & COPPIN CO., INC.  
LIC # 00857563 (707) 528-1400, EXT 233  
JJAMAN@KEEGANCOPPIN.COM**

The above information, while not guaranteed, has been secured from sources we believe to be reliable. Submitted subject to error, change or withdrawal. An interested party should verify the status of the property and the information herein.



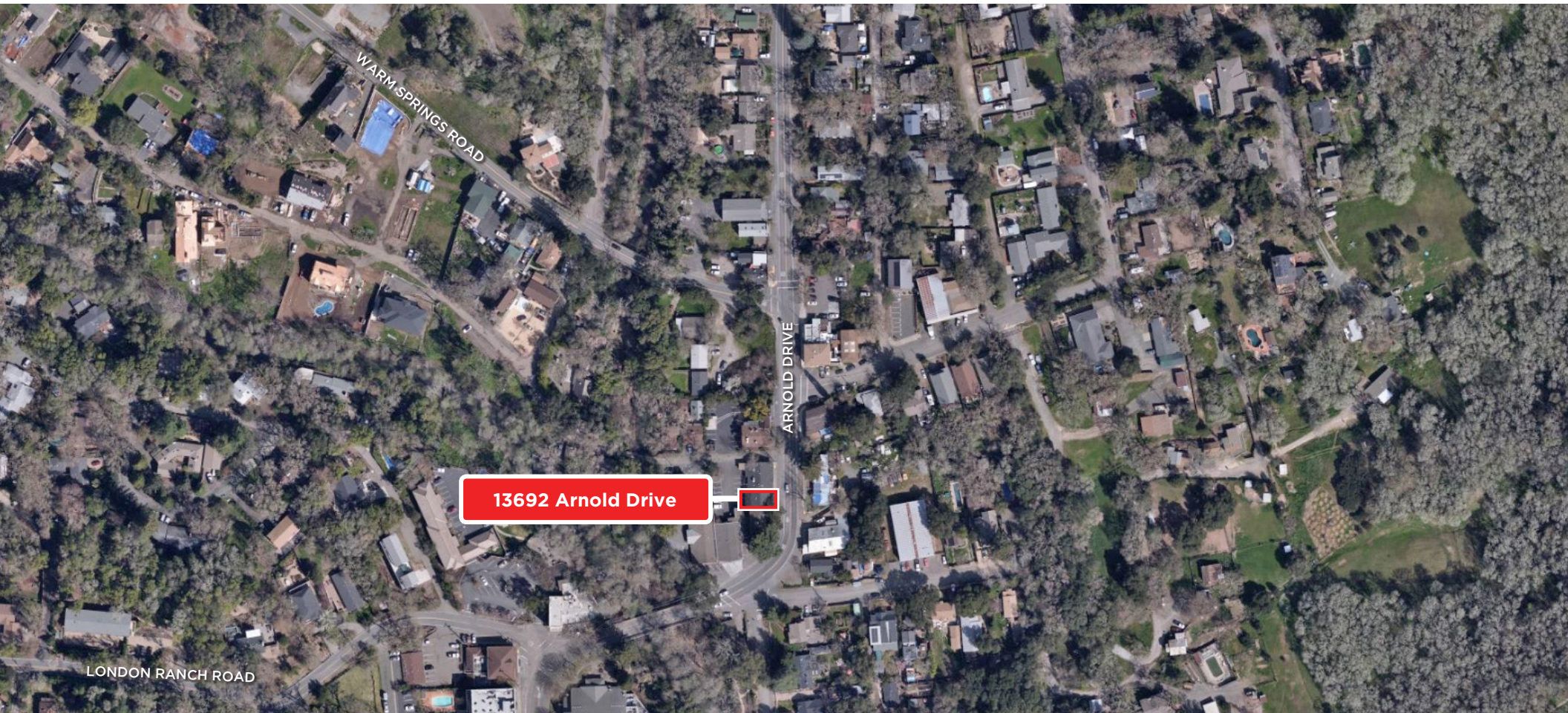


## VICINITY MAP



13692 ARNOLD DRIVE,  
GLEN ELLEN, CA

**SONOMA VALLEY  
COMMERCIAL BUILDING  
FOR LEASE**



Keegan & Coppin Co., Inc.  
1355 North Dutton Avenue  
Santa Rosa, CA 95401  
[www.keegancoppin.com](http://www.keegancoppin.com)  
(707) 528-1400

The above information, while not guaranteed, has been secured from sources we believe to be reliable. Submitted subject to error, change or withdrawal. An interested party should verify the status of the property and the information herein.

REPRESENTED BY:

**JOEL JAMAN, PARTNER**  
LIC # 00857563 (707) 528-1400, EXT 233  
[JJAMAN@KEEGANCOPPIN.COM](mailto:JJAMAN@KEEGANCOPPIN.COM)