



For Sale
**43± AC of Land
Available in Starke, FL**

S. US Hwy 301, Starke, FL 32091

Jason Hurst
Senior Associate
+1 904 674 2748
jason.hurst@colliers.com

Damaris Arroyo
Associate
+1 904 674 2984
damaris.arroyo@colliers.com

76 S Laura Street
Suite 1500
Jacksonville, FL 32202
colliers.com/jacksonville

Colliers

Executive Summary

This 43± acres of land assembled to the north and south of Walmart Super Center (14500 S US Highway 301) in Starke, Florida presents a highly visible and strategic development opportunity along one of North Florida's premier, crossroads for interstate transportation in Florida. With direct frontage on US 301—connecting Jacksonville (45 miles), Gainesville (25 miles), Lake City (36 miles), and South Georgia—the property offers exceptional access, flexibility and long term upside for commercial, industrial, or mixed use development. This offering represents a rare opportunity to acquire scale, exposure, and development optionality in an underserved, but well positioned North Florida market.

- **South Parcel Assemblage:** 32± AC
- **North Parcel Assemblage:** 11± AC
- **Zoning:** Commercial Intensive
- Municipal utility access
- Pre-approval for FDOT curb cuts
- **Call for pricing**



North Parcel



South Parcel

Northern Parcel Survey

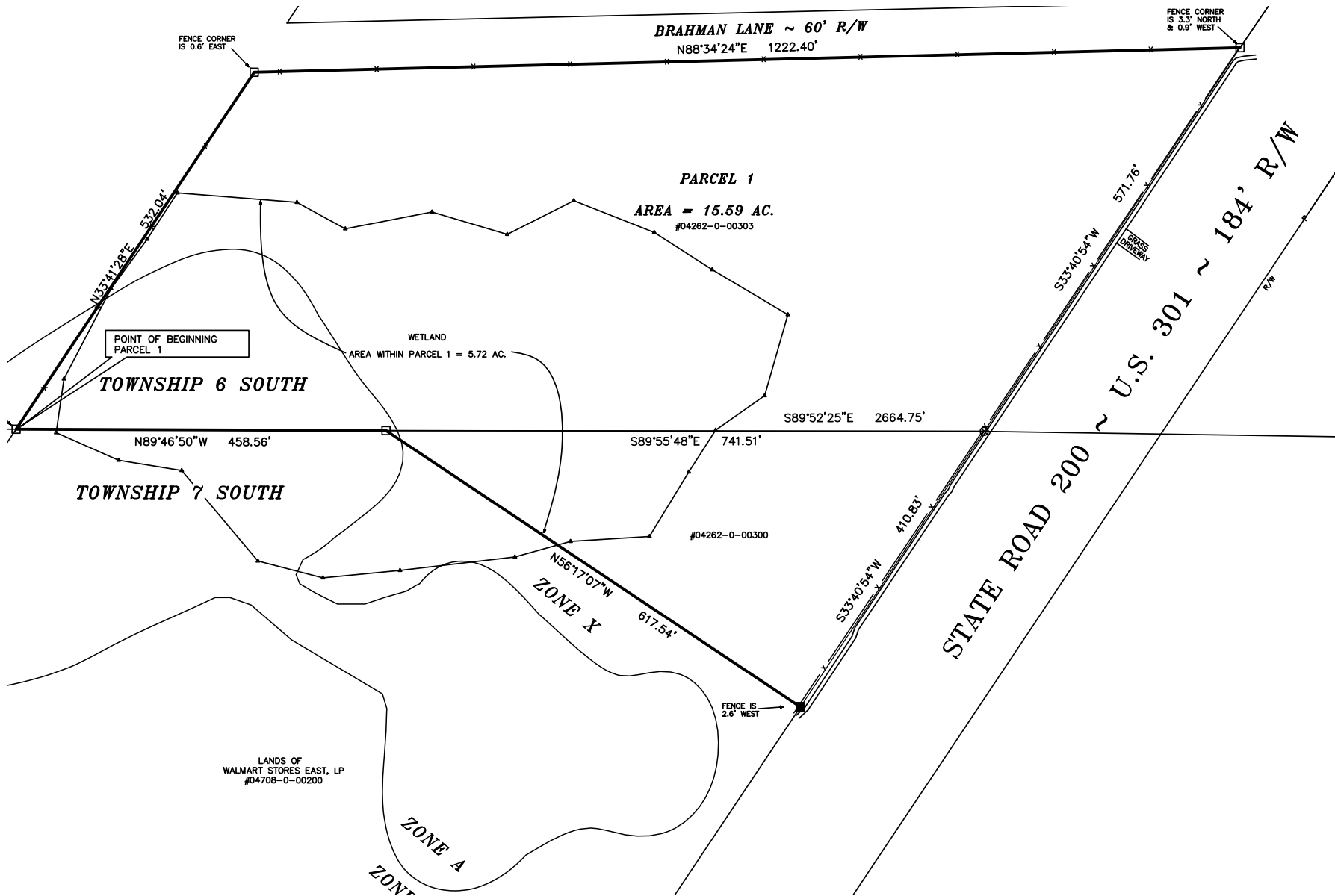


Photo Gallery

Colliers

North Parcel



South Parcel





Tapestry Segmentation

The fabric of America's neighborhoods

Tapestry lifemode	Households	HHs %	% US HHs	Index
learn more...				
Affluent Estates (L1)			9.9%	
Upscale Avenues (L2)			5.7%	
Uptown Individuals (L3)			3.8%	
Family Landscapes (L4)			7.5%	
GenXurban (L5)			11.4%	
Cozy Country Living (L6)			12.0%	
Ethnic Enclaves (L7)			7.1%	
Middle Ground (L8)			10.9%	
Senior Styles (L9)			5.8%	
Rustic Outposts (L10)			8.2%	
Midtown Singles (L11)			6.2%	
Hometown (L12)			6.1%	
Next Wave (L13)			3.9%	
Scholars and Patriots (L14)			1.6%	

Key facts

\$245,272
Median Home Value

\$63,261
Median HH Income

42.2
Median Age

3.9
Home Value to Income Ratio

31,806
Households

Education

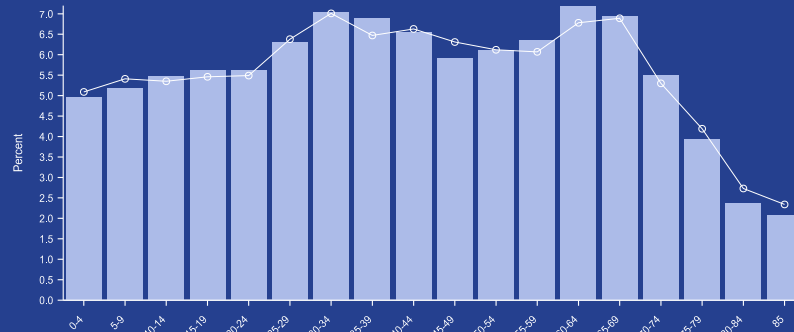
13%
No HS Diploma

34%
HS Graduate

29%
Some College

23%
Degree or Higher

Age profile



Dots show comparison to **Bradford County**

2025 Households by income (Esri)

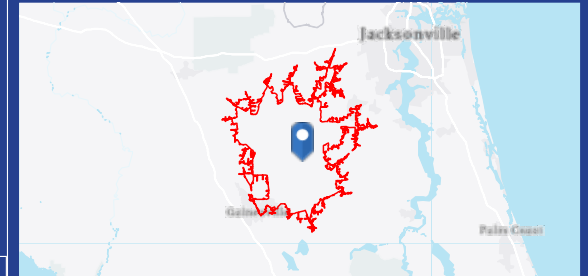
The largest group: \$50,000 - \$74,999 (19.0%)

The smallest group: \$200,000+ (4.5%)

Indicator	Value	Diff
<\$15,000	10.3%	-3.1%
\$15,000 - \$24,999	6.5%	-0.1%
\$25,000 - \$34,999	8.2%	+1.3%
\$35,000 - \$49,999	14.0%	+2.2%
\$50,000 - \$74,999	19.0%	+1.0%
\$75,000 - \$99,999	12.8%	-0.6%
\$100,000 - \$149,999	16.9%	-0.5%
\$150,000 - \$199,999	7.8%	-1.3%
\$200,000+	4.5%	+1.0%

Bars show deviation from **Bradford County**

30 minutes



Tapestry

Top 5 segments by household count

16 Southern Satellites > 5,072 | **15.9%**

12 Scenic Byways > 4,837 | **15.2%**

14 Rooted Rural > 4,586 | **14.4%**

E5 Rural Versatility > 3,105 | **9.8%**

C2 Kids and Kin > 1,362 | **4.3%**

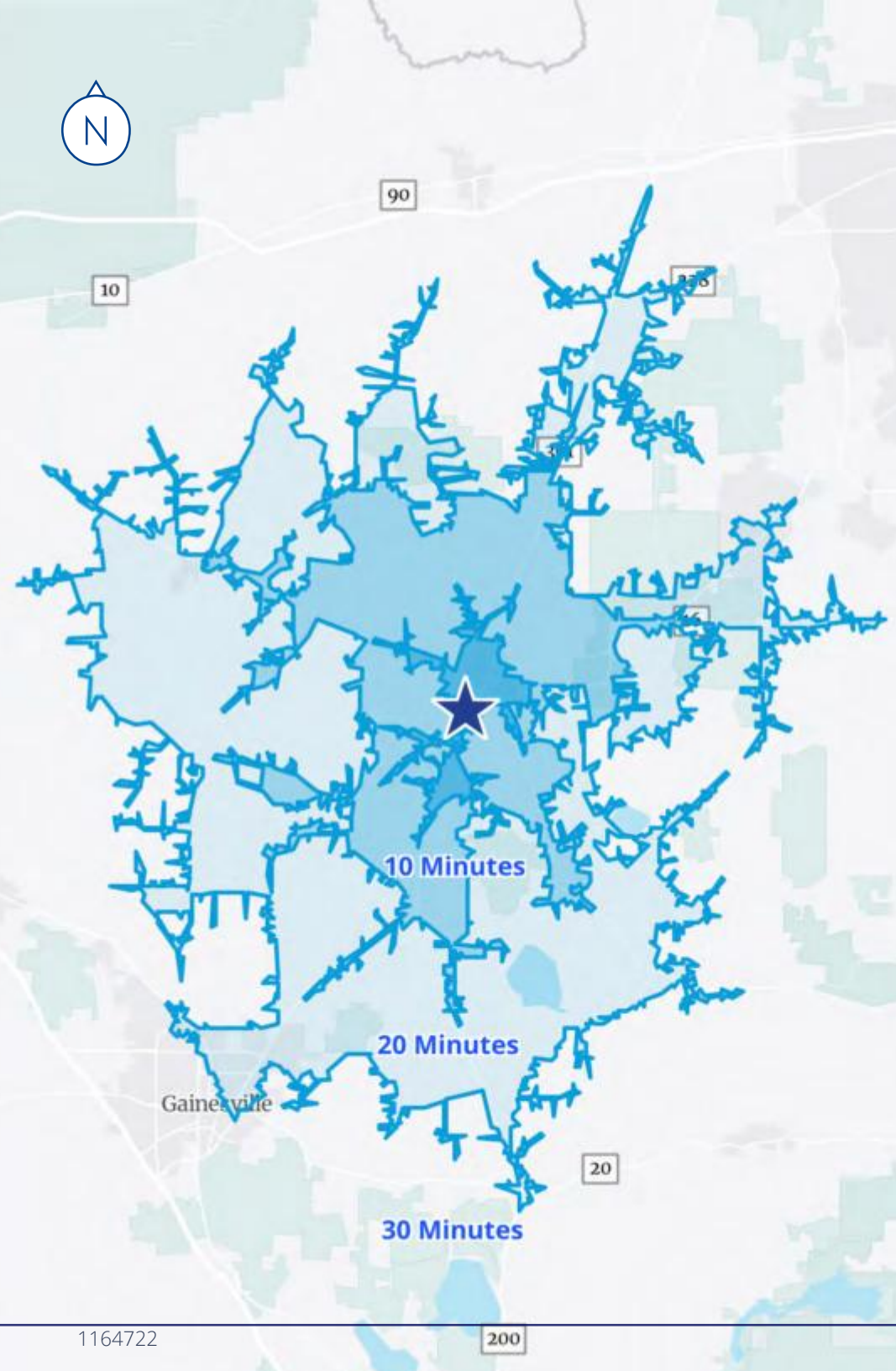
Other 12.8K | **40.4%**

Southern Satellites accounts for 15.9% of households in the area which is **13.4% higher** than the U.S.

[View comparison table](#)



30 minutes



Demographic Overview

2025 Population



10 Min	10,876
20 Min	35,626
30 Min	121,597

2025 Average Household Income



10 Min	\$69,300
20 Min	\$80,057
30 Min	\$82,518

2025 Daytime Population



10 Min	13,122
20 Min	32,609
30 Min	120,428

2030 Average Household Income



10 Min	\$76,175
20 Min	\$88,751
30 Min	\$92,723

Source: ACS, Esri, Esri-Data Axle, Esri-U.S. BLS, U.S. Census

Immediate Retail

HWY 100 | 8,300± AADT

Downtown Starke

- Winn-Dixie
- Walgreens
- AutoZone
- ANYTIME FITNESS
- SONNY'S BBQ
- CVS pharmacy
- TD Bank

- HARBOR FREIGHT
- DOLLAR GENERAL
- home furniture
- TJ-maxx
- FIVE BEL'W

- TACO BELL
- CAPTAIN D'S
- BURGER KING
- McDonald's

- bealls OUTLET
- ALDI
- ACE
- POPEYES LOUISIANA KITCHEN
- TRACTOR SUPPLY CO
- DOLLAR TREE

- RAC
- IHOP
- VyStar

- Hyatt Regency Express

Site

Walmart

- ZAXBY'S

S-Walnut-Street | 10,700± AADT

301

301



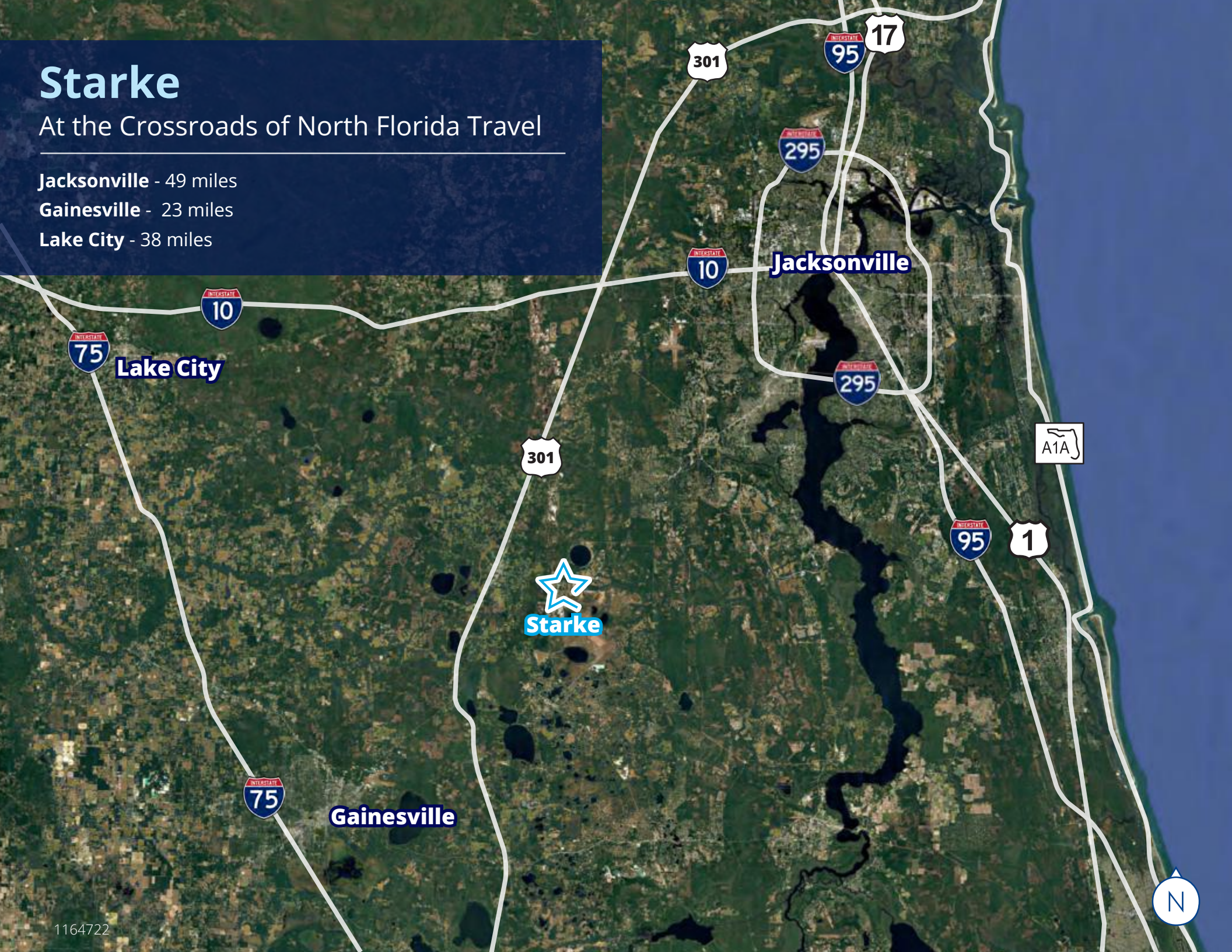
Starke

At the Crossroads of North Florida Travel

Jacksonville - 49 miles

Gainesville - 23 miles

Lake City - 38 miles



Location Overview

Jacksonville - 49 miles
 Gainesville - 23 miles
 Ocala - 54 miles



Disclaimer: This document/email has been prepared by Colliers for advertising and general information only. Colliers makes no guarantees, representations or warranties of any kind, expressed or implied, regarding the information including, but not limited to, warranties of content, accuracy and reliability. Any interested party should undertake their own inquiries as to the accuracy of the information. Colliers excludes unequivocally all inferred or implied terms, conditions and warranties arising out of this document and excludes all liability for loss and damages arising there from. This publication is the copyrighted property of Colliers and /or its licensor(s). ©2025 All rights reserved. This communication is not intended to cause or induce breach of an existing listing agreement. Colliers International Florida, LLC