



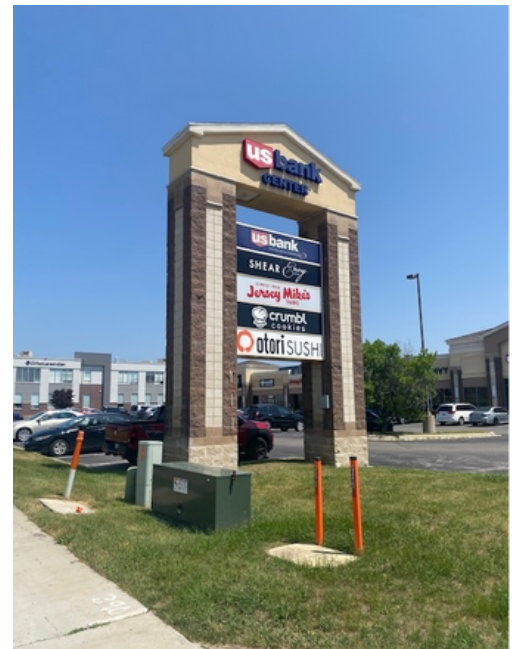
**5,000 SF
AVAILABLE**

2665 COMMERCE DRIVE NW, ROCHESTER, MN 55901



PROPERTY HIGHLIGHTS:

- 5000 sq ft available on desirable West Circle Drive NW in Rochester, MN
- High ceilings
- Full glass frontage
- Excellent co-tenancy with Crumbl Cookies, Jersey Mike's, Ootori Sushi, U.S. Bank
- High Traffic Counts, High visibility
- Rochester, Minnesota is home to world-famous Mayo Clinic.



Contact information:

Darci Fenske
(507) 421-6556

dfenske@paramark.us



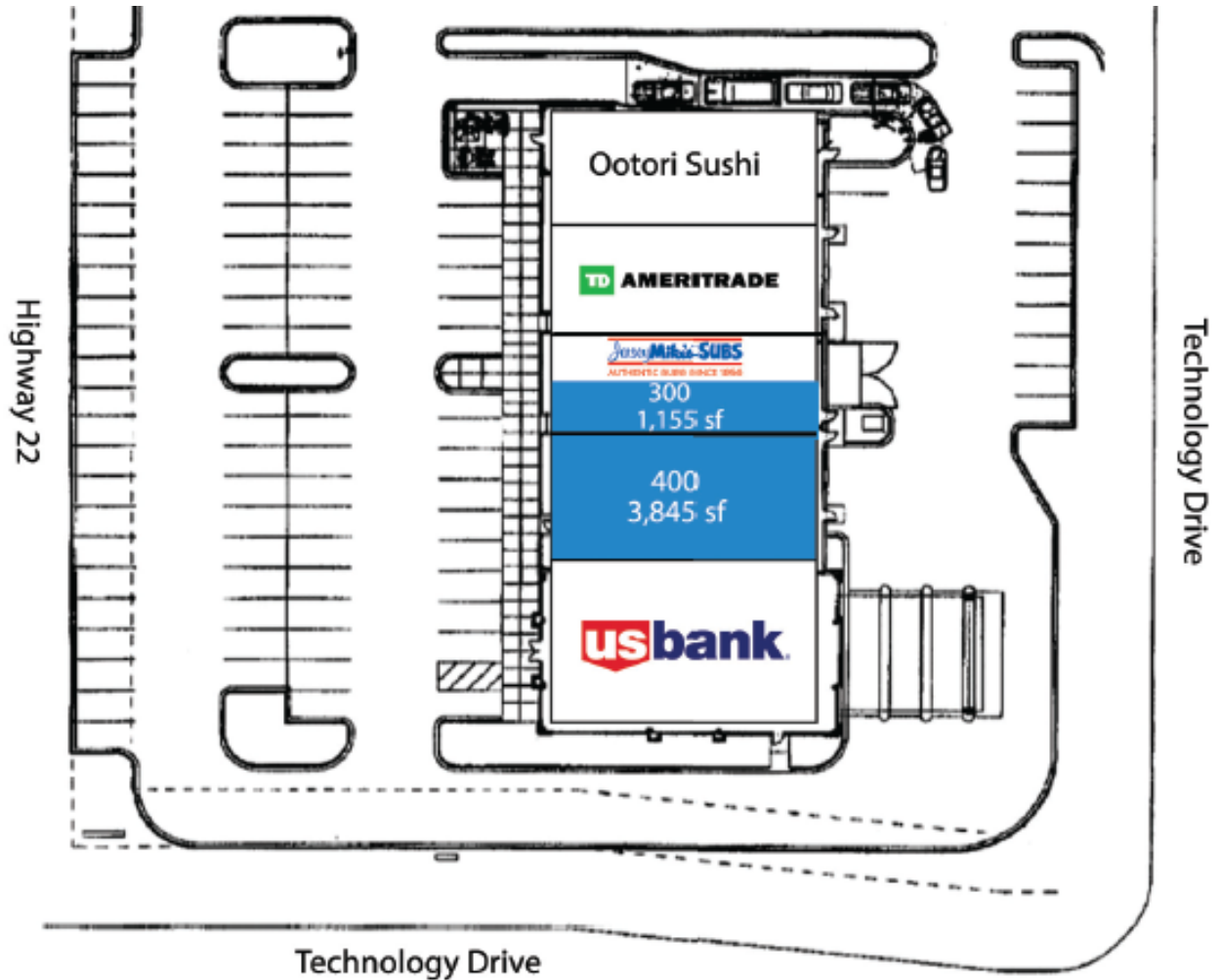


PARAMARK
Real Estate Services

FOR LEASE

**5,000 SF
AVAILABLE**

2665 COMMERCE DRIVE NW, ROCHESTER, MN 55901



PARAMARK
Real Estate Services

© 2021 Paramark Real Estate Services. No warranty or representation, express or implied, is made to the accuracy or completeness of the information contained herein, and same is submitted subject to errors, omissions, change in price, rental or other conditions, withdrawal without notice, and to any special listing conditions imposed by the property owner(s). As applicable, we make no representation as to the condition of the property (or properties) in question.



**5,000 SF
AVAILABLE**

2665 COMMERCE DRIVE NW, ROCHESTER, MN 55901

