

500

SANDS DRIVE



SCHOOL CAMPUS IN SAN JOSE

APPROXIMATELY 19,995 SF (16 CLASSROOMS)

500 Sands Drive, San Jose, CA, 95125

NEWMARK

Andres Claude
Senior Managing Director
(408) 982 8460
andres.claude@nrmk.com
CA RE LIC. #01309945



Approximately 19,995 square feet



4 two story buildings and 1 single story, all connected



Previously used as an international school



Ample Parking



Convenient Ingress/Egress



Amphitheater



Sports Field



Playground



Pool

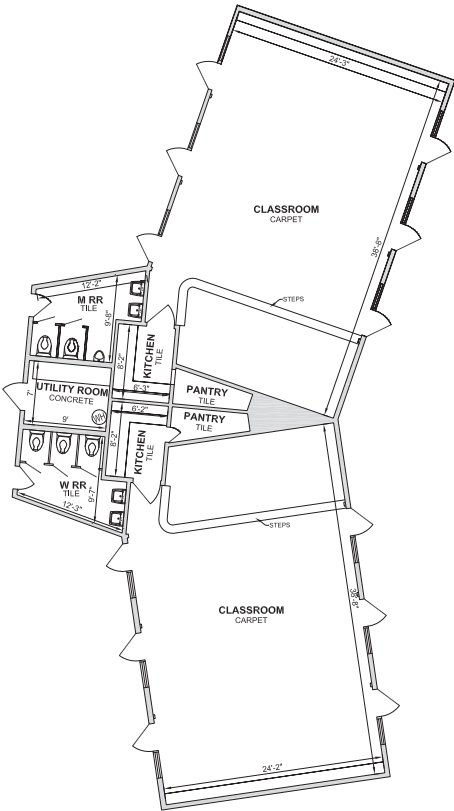


Close to Hwy 87 and Almaden Expressway

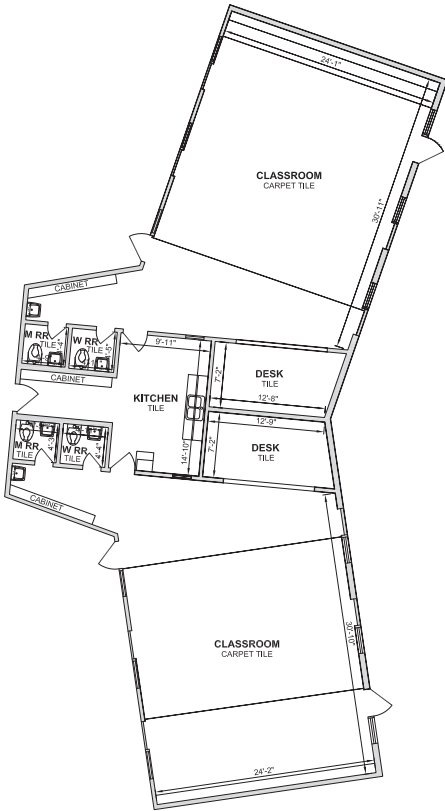


FLOORPLANS

Building A

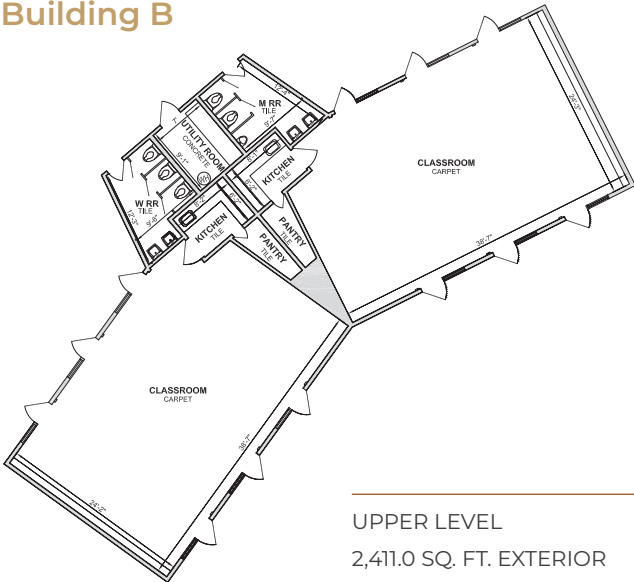


UPPER LEVEL
2,412.3 SQ. FT.

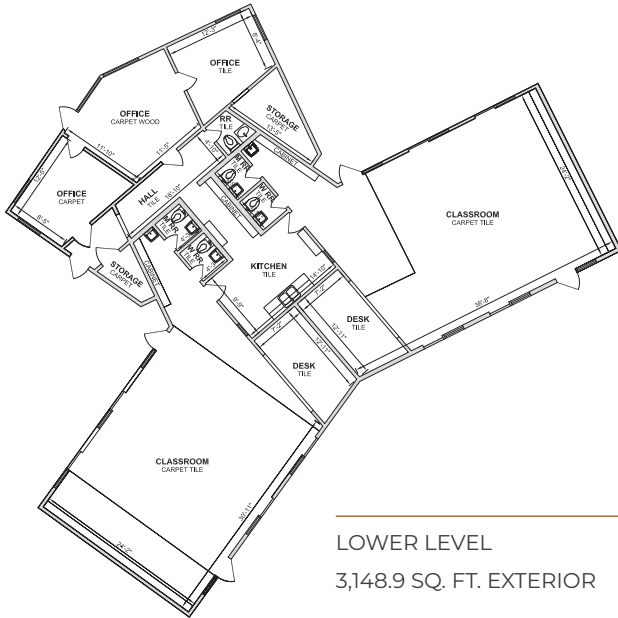


LOWER LEVEL
2,412.3 SQ. FT.

Building B



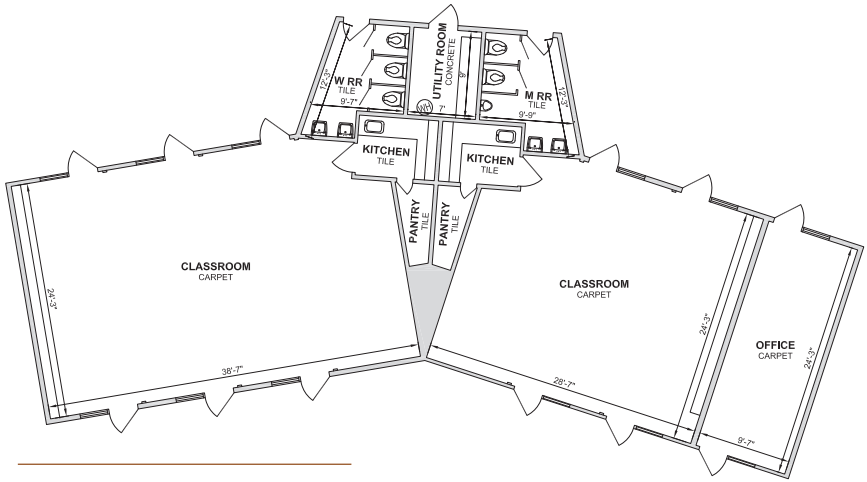
UPPER LEVEL
2,411.0 SQ. FT. EXTERIOR



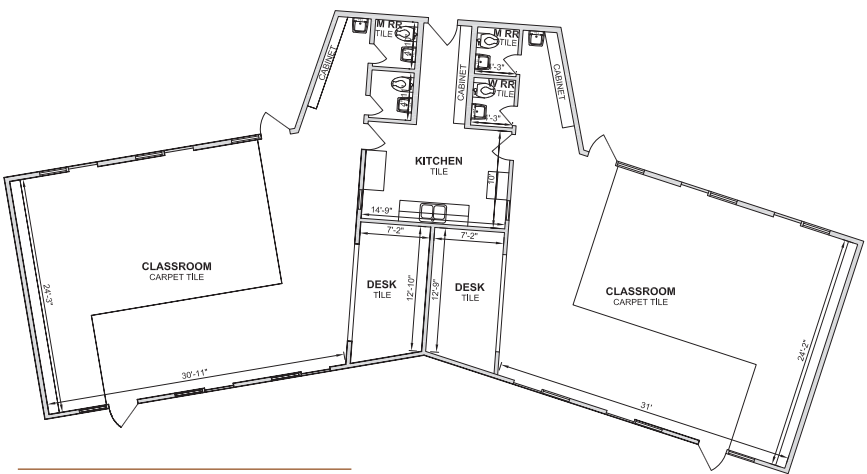
LOWER LEVEL
3,148.9 SQ. FT. EXTERIOR

FLOORPLANS

Building C

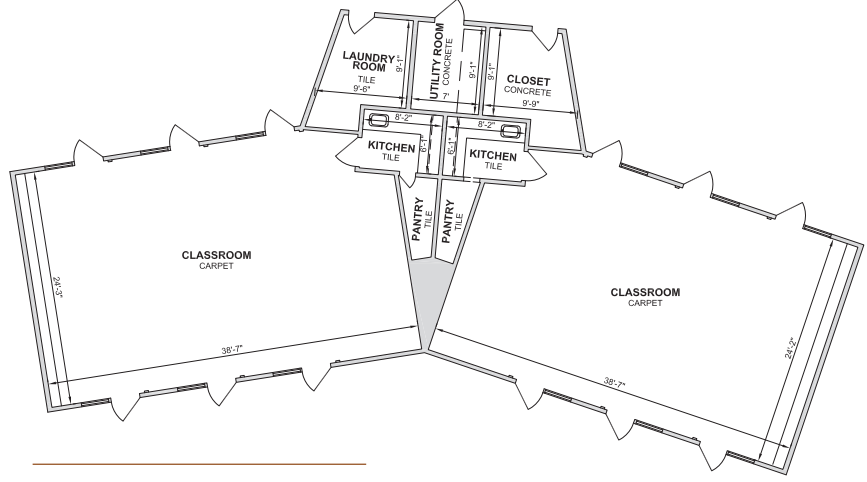


UPPER LEVEL
2,408.4 SQ. FT. EXTERIOR

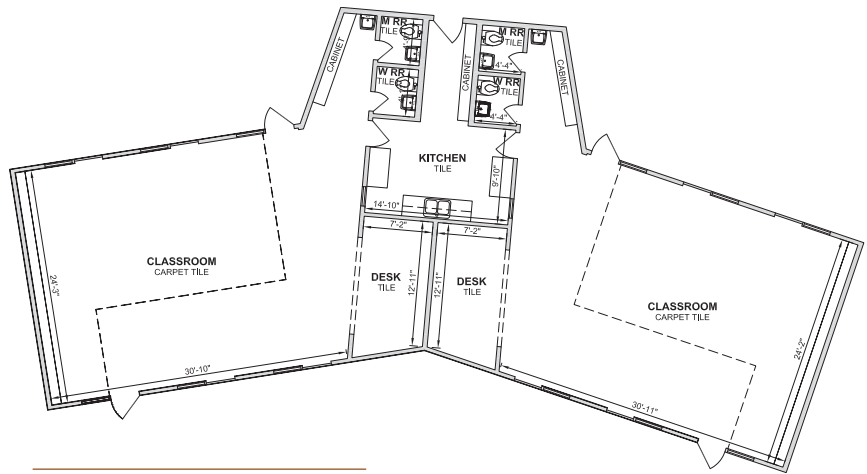


LOWER LEVEL
2,408.4 SQ. FT. EXTERIOR

Building D



UPPER LEVEL
2,396.8 SQ. FT. EXTERIOR



LOWER LEVEL
2,396.8 SQ. FT. EXTERIOR

FLOORPLANS

Summary

Building A Upper	2,412.3 SF
------------------	------------

Building A Lower	2,412.3 SF
------------------	------------

Building B Upper	2,411 SF
------------------	----------

Building B Lower	3,148.9 SF
------------------	------------

Building C Upper	2,408.4 SF
------------------	------------

Building C Lower	2,408.4 SF
------------------	------------

Building D Upper	2,396.8 SF
------------------	------------

Building D Lower	2,396.8 SF
------------------	------------

Building E	3,640 SF
-----------------------	---------------------

LEASED



SITE PLAN



INTERIOR PHOTOS



EXTERIOR PHOTOS



LOCATION MAP



500

SANDS DRIVE



NEWMARK

Andres Claire
Senior Managing Director
(408) 982 8460
andres.claire@nmrk.com
CA RE LIC. #01309945

3055 Olin Avenue, Suite 2200, San Jose, CA 95128 | The distributor of this communication is performing acts for which a real estate license is required. The information contained herein has been obtained from sources deemed reliable but has not been verified and no guarantee, warranty or representation, either express or implied, is made with respect to such information. Terms of sale or lease and availability are subject to change or withdrawal without notice. 8239035390 | 09/25