



SOUTH PARK GROUP

www.southparkgroup.com



FOR LEASE

CREATIVE OFFICE

7421 Beverly Boulevard, Suite 11
Los Angeles, California 90036

Historic Beverly Blvd. building with red brick facade and castle-like design. Beautiful architecture and open courtyard. With views of the Hollywood Hills. Near CBS Studios, The Grove and Park La Brea plus many hot restaurants: Angelini, Osteria, Terroni, Della Terra, BLD and more.

AVAILABLE SPACE

Unit E: Approx. 680 rentable sqft

Rate: \$3.75 per sqft, Modified Gross

DAVID RAVANSHENAS

Tel. 323.782.1205

E. david@southparkgroup.com

No. 01869082

STEVE RAVAN

Tel. 323.782.1262

E. steveravan@southparkgroup.com

No. 00890189

SOUTH PARK GROUP | 8322 Beverly Blvd., Suite 301 | Los Angeles, CA 90048

This information has been furnished by sources that we deem reliable, but for which we assume no liability. The information contained herein is given, in confidence, with the understanding that all negotiations pertaining to this property be handled through the submitting office. All measurements are approximate.

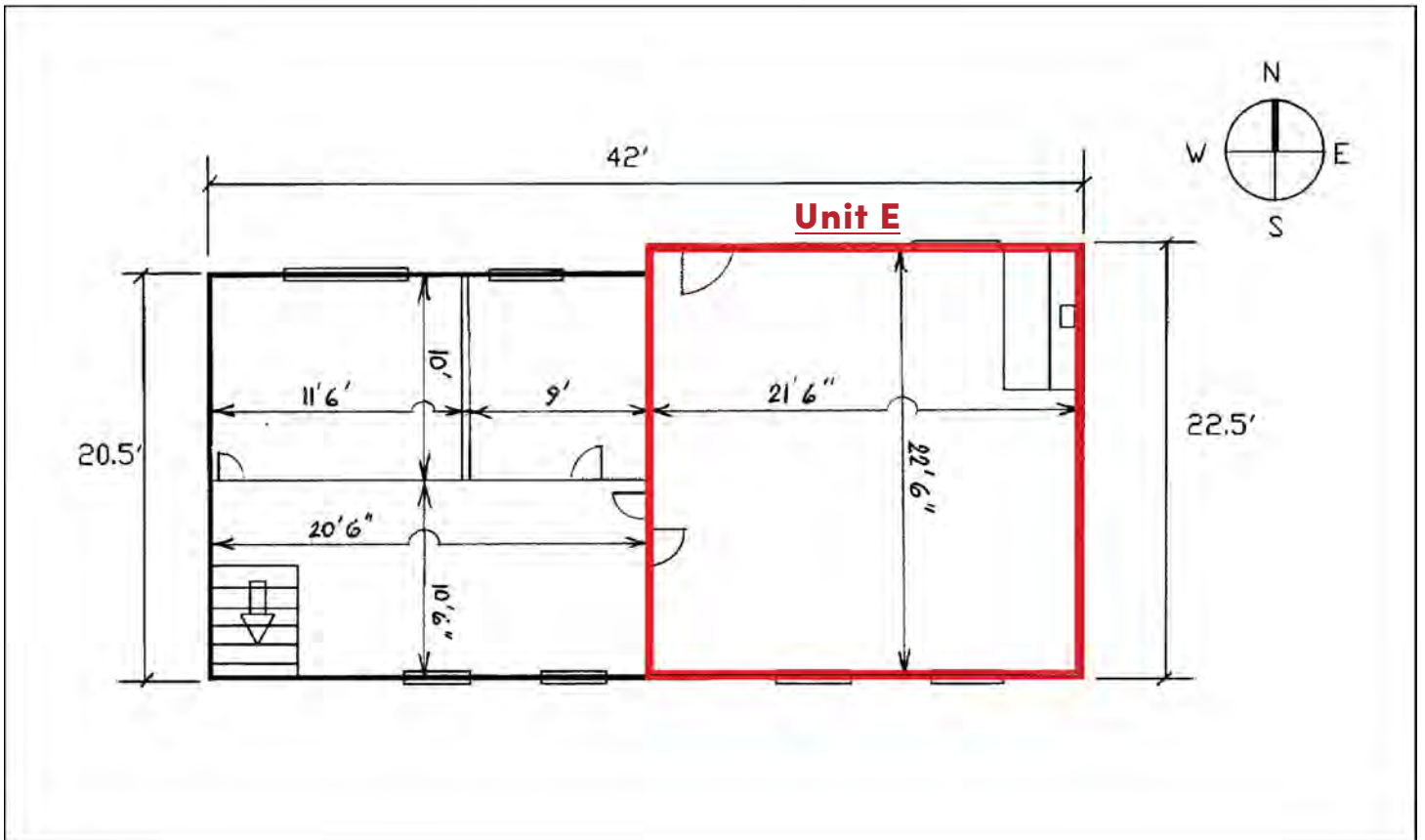


SOUTH PARK GROUP

www.southparkgroup.com

SECOND FLOOR PLAN

7421 Beverly Boulevard, Suite 11E, Los Angeles, California 90036



Not Drawn to Scale

SOUTH PARK GROUP | 8322 Beverly Blvd., Suite 301 | Los Angeles, CA 90048

This information has been furnished by sources that we deem reliable, but for which we assume no liability. The information contained herein is given, in confidence, with the understanding that all negotiations pertaining to this property be handled through the submitting office. All measurements are approximate.



SOUTH PARK GROUP

www.southparkgroup.com

INTERIOR

7421 Beverly Blvd., Suite 11E, Los Angeles, California 90036



SOUTH PARK GROUP | 8322 Beverly Blvd., Suite 301 | Los Angeles, CA 90048

This information has been furnished by sources that we deem reliable, but for which we assume no liability. The information contained herein is given, in confidence, with the understanding that all negotiations pertaining to this property be handled through the submitting office. All measurements are approximate.