

# Utah Food Bank Land

900 South 1750 West  
Springville, Utah 84663



Highway Commercial Land | For Sale



## Property Information

- \$16 per SF
- 7 acres
- Close proximity to the I-15 interchange

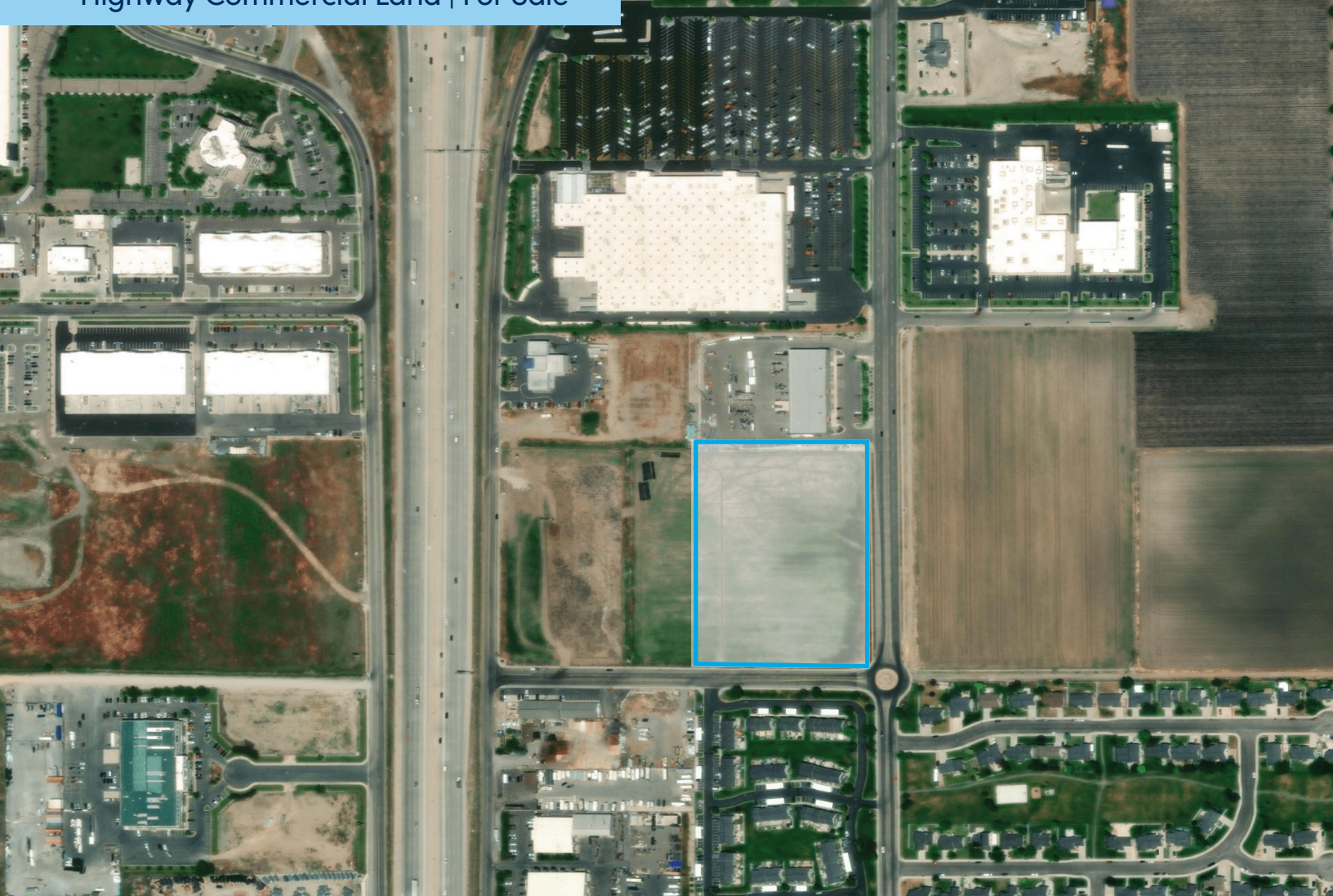
**Jarrod Hunt**  
Vice Chair  
+1 801 787 8940  
jarrod.hunt@colliers.com



# Utah Food Bank Land

900 South 1750 West  
Springville, Utah 84663

Highway Commercial Land | For Sale



7

Acres

\$16

Price per SF

HC

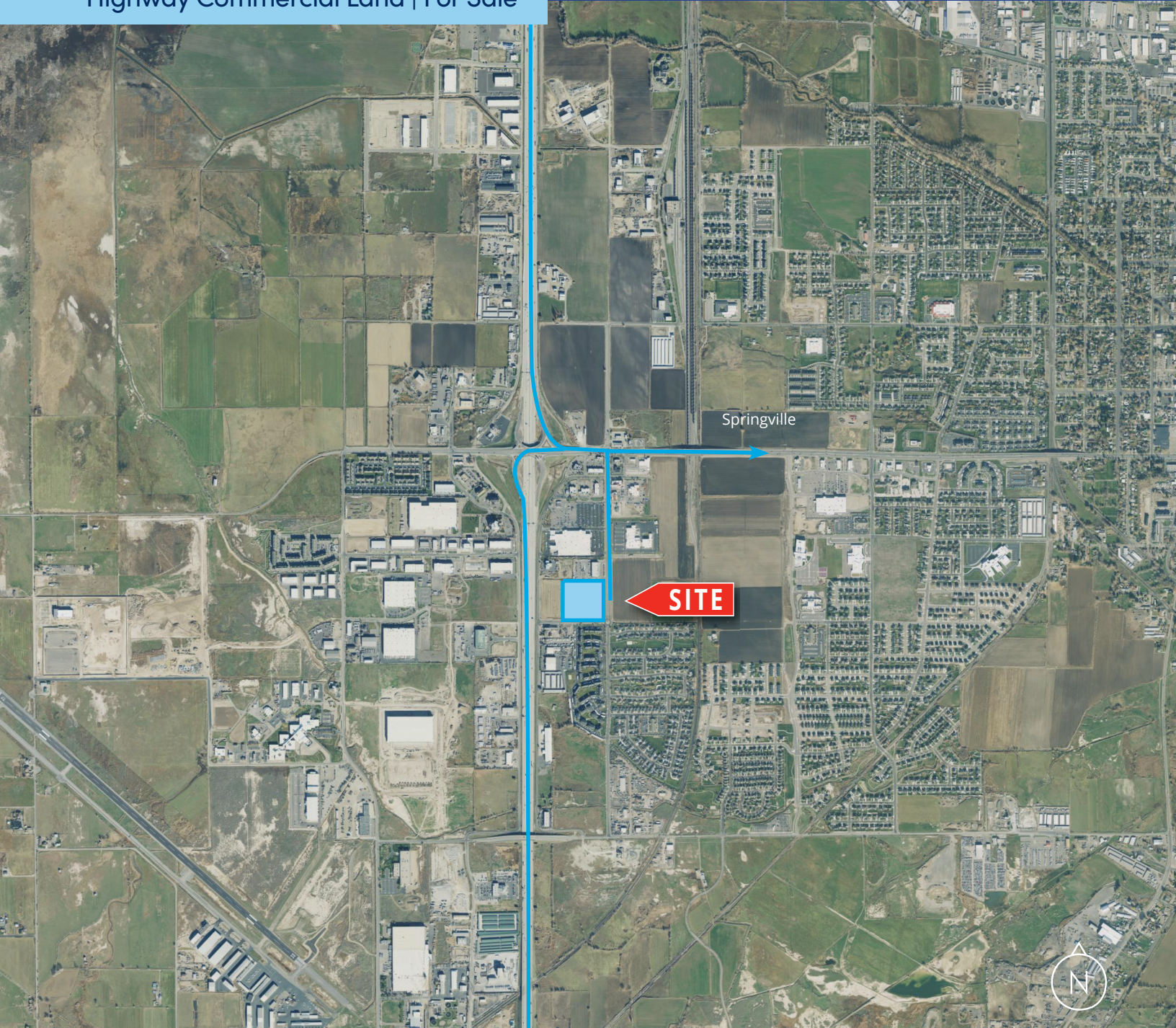
Zoning

## Development Opportunity

Colliers is pleased to present an opportunity to purchase 7 acres of land in Springville, Utah. This parcel of land is located South of the Utah Food bank. This property has great access and visibility from 1-15 and is planned for HC zoning. The area has seen a lot of growth over the past 5 years; including residential and commercial expansion.



Highway Commercial Land | For Sale

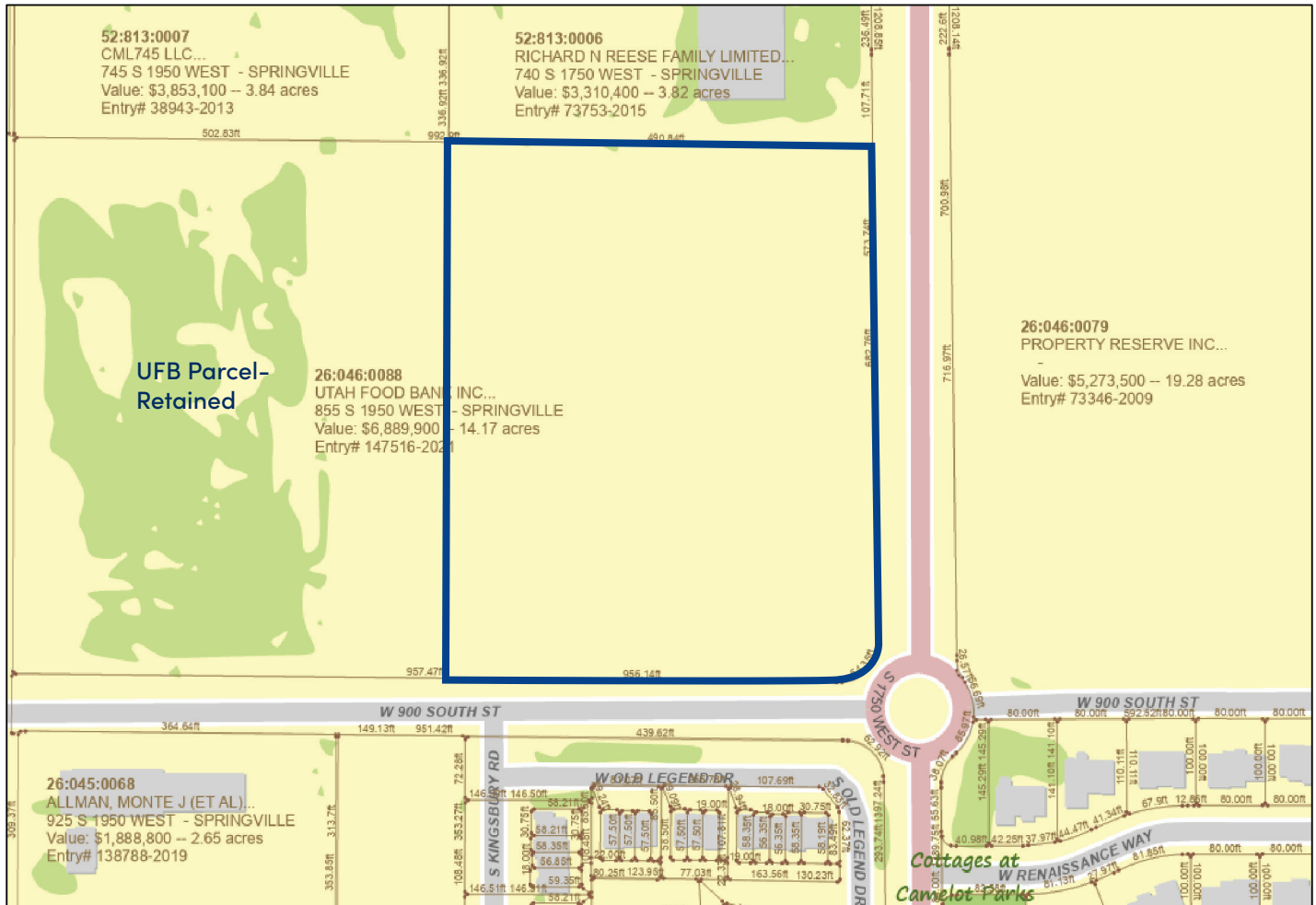


Drive Times

Salt Lake City, UT	45 min	Denver, Co	7hr 29min
Las Vegas, NV	5hr 9min	Los Angeles, CA	9hr 19min



# Highway Commercial Land Survey



**Colliers**  
2100 Pleasant Grove Blvd., Suite 200  
Pleasant Grove, UT 84062  
Main: +1 801 947 8300  
colliers.com

**Jarrod Hunt**  
Vice Chair  
+1 801 787 8940  
jarrod.hunt@colliers.com

This document has been prepared by Colliers International for advertising and general information only. Colliers International makes no guarantees, representations or warranties of any kind, expressed or implied, regarding the information including, but not limited to, warranties of content, accuracy and reliability. Any interested party should undertake their own inquiries as to the accuracy of the information. Colliers International excludes unequivocally all inferred or implied terms, conditions and warranties arising out of this document and excludes all liability for loss and damages arising there from. This publication is the copyrighted property of Colliers International and/or its licensor(s). ©2024. All rights reserved.