



3,980 SF INDUSTRIAL/FLEX SUITE FOR LEASE

1820 INDUSTRIAL CIRCLE, SUITE C
LONGMONT, CO 80501



PROPERTY HIGHLIGHTS

1820 INDUSTRIAL CIRCLE, SUITE C | LONGMONT, CO 80501

Discover this versatile flex space, ideal for industrial use. With a spacious paved yard providing ample outdoor storage, shared dock access, and one overhead door, you'll have everything needed for efficient operations. Added perks include a private bathroom, an industrial fridge, and the option for eye-catching monument signage, all within a generous 14' clear height space.

- Paved yard with outside storage available
- Includes shared dock access and 2 overhead doors
 - 10' x 10' exterior overhead door
 - 10' x 10' interior overhead door
- 1 private bathroom
- Industrial fridge
- Monument signage available

Lease Rate:

\$14.00/SF NNN
NNN's: \$4.15/SF

YOC/YOR:

1979/2008

Clear Height:

14'

Power:

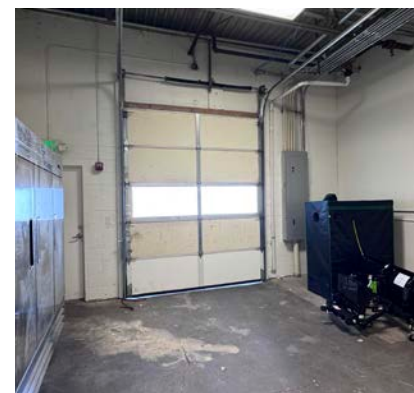
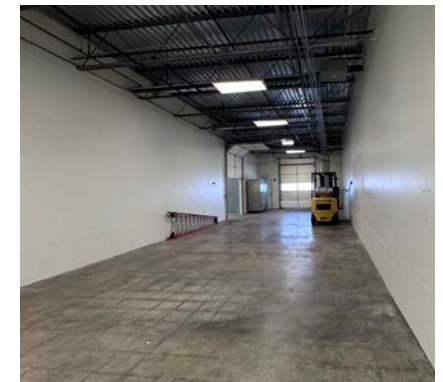
3-phase, 208 V

Parking:

3.7 spaces: 1,000 SF

Zoning:

[MU-R](#)
[Mixed Use Regional Center](#) 



1820 INDUSTRIAL CIRCLE, SUITE C | LONGMONT, CO 80501

SITE PLAN



CONTACT INFORMATION

NATE HECKEL
Managing Director
+1 970 267 7724
nate.heckel@cushwake.com

TY MASHEK
Senior Associate
+1 303 525 3125
ty.mashek@cushwake.com

772 Whalers Way, Suite 200
Fort Collins, CO 80525
+1 970 776 3900
cushmanwakefield.com



©2025 Cushman & Wakefield. All rights reserved. The information contained in this communication is strictly confidential. This information has been obtained from sources believed to be reliable but has not been verified. NO WARRANTY OR REPRESENTATION, EXPRESS OR IMPLIED, IS MADE AS TO THE CONDITION OF THE PROPERTY (OR PROPERTIES) REFERENCED HEREIN OR AS TO THE ACCURACY OR COMPLETENESS OF THE INFORMATION CONTAINED HEREIN, AND SAME IS SUBMITTED SUBJECT TO ERRORS, OMISSIONS, CHANGE OF PRICE, RENTAL OR OTHER CONDITIONS, WITHDRAWAL WITHOUT NOTICE, AND TO ANY SPECIAL LISTING CONDITIONS IMPOSED BY THE PROPERTY OWNER(S). ANY PROJECTIONS, OPINIONS OR ESTIMATES ARE SUBJECT TO UNCERTAINTY AND DO NOT SIGNIFY CURRENT OR FUTURE PROPERTY PERFORMANCE