

# FOR LEASE • ±7,500 SF

1915 NW 40TH COURT, POMPANO BEACH, FL 33064  
**OFFICE•WAREHOUSE**

# LRM

COMMERCIAL  
REAL  
ESTATE  
ADVISORS



## PROPERTY FEATURES

- Prime Location
- ±7,500 Total SF
  - ± 560 SF Office Space
  - ± 6,940 SF Warehouse
- 3 Restrooms
- 20' Clear Ceiling Height
- 3 Grade Level Doors
- Paint Booth In Warehouse
- See Floor Plan on Page 2
- Available January 2025

## LEASE RATE:

**\$17.50 NNN**  
**\$5.00 CAM**

## CONTACT



**CHAD GOTTSEGEN**  
Managing Director and Broker  
**561-400-7750**  
chad@lrmcrea.com



**ADRIAN MINOR**  
President  
**561-756-0114**  
adrian@lrmcrea.com



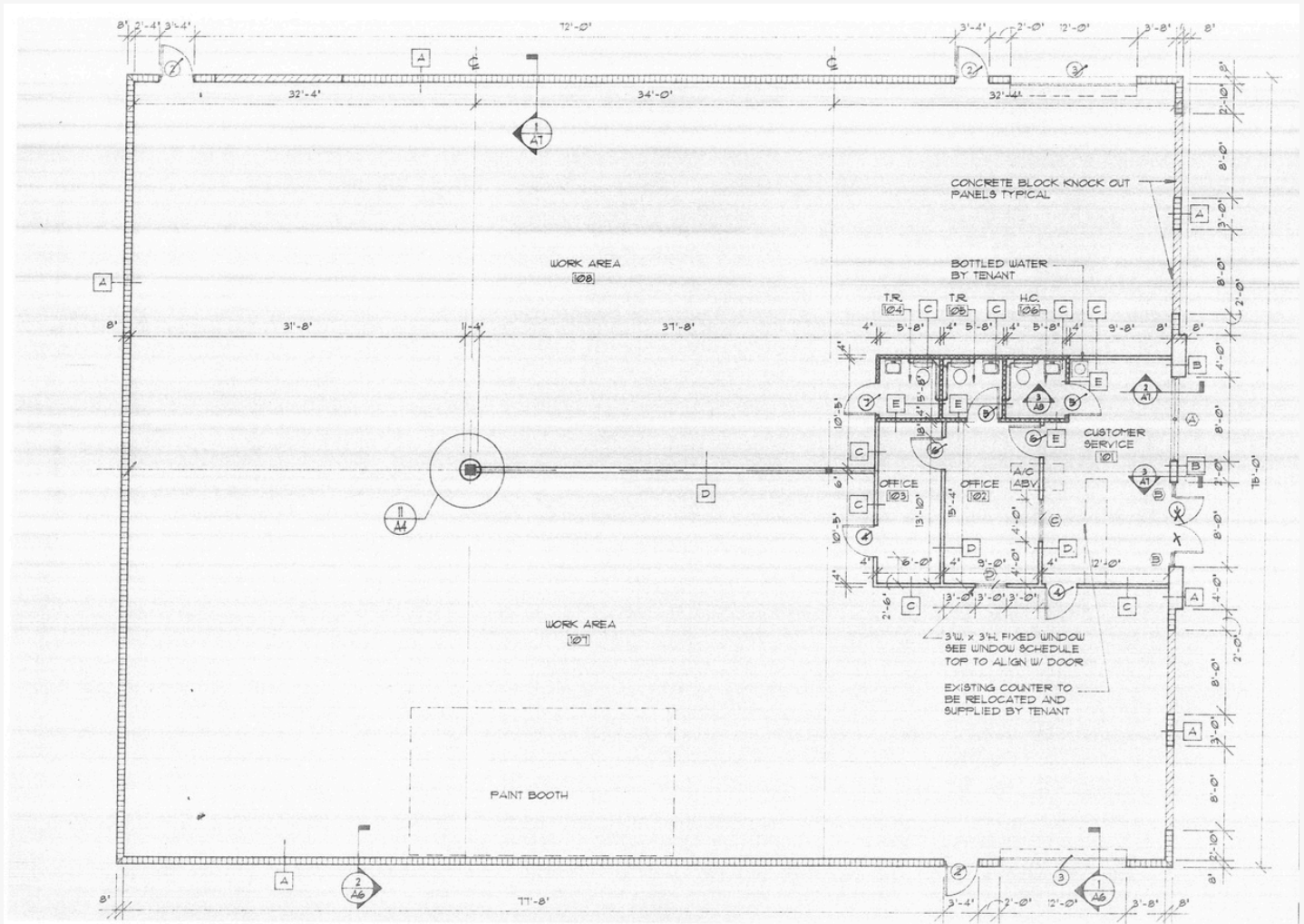
This information has been obtained from sources believed reliable. We have not verified it and make no guarantee, warranty or representation about it. Any projections, opinions, assumptions or estimates used are for example only and do not represent the current or future performance of the property. You and your advisors should conduct a careful, independent investigation of the property to determine to your satisfaction the suitability of the property for your needs.

# FOR LEASE • ±7,500 SF

1915 NW 40TH COURT, POMPANO BEACH, FL 33064  
**OFFICE•WAREHOUSE**



**COMMERCIAL  
REAL  
ESTATE  
ADVISORS**



## CONTACT



**CHAD GOTTSEGEN**  
Managing Director and Broker  
**561-400-7750**  
chad@lrmcrea.com



**ADRIAN MINOR**  
President  
**561-756-0114**  
adrian@lrmcrea.com



This information has been obtained from sources believed reliable. We have not verified it and make no guarantee, warranty or representation about it. Any projections, opinions, assumptions or estimates used are for example only and do not represent the current or future performance of the property. You and your advisors should conduct a careful, independent investigation of the property to determine to your satisfaction the suitability of the property for your needs.