

HOME DEPOT PLAZA

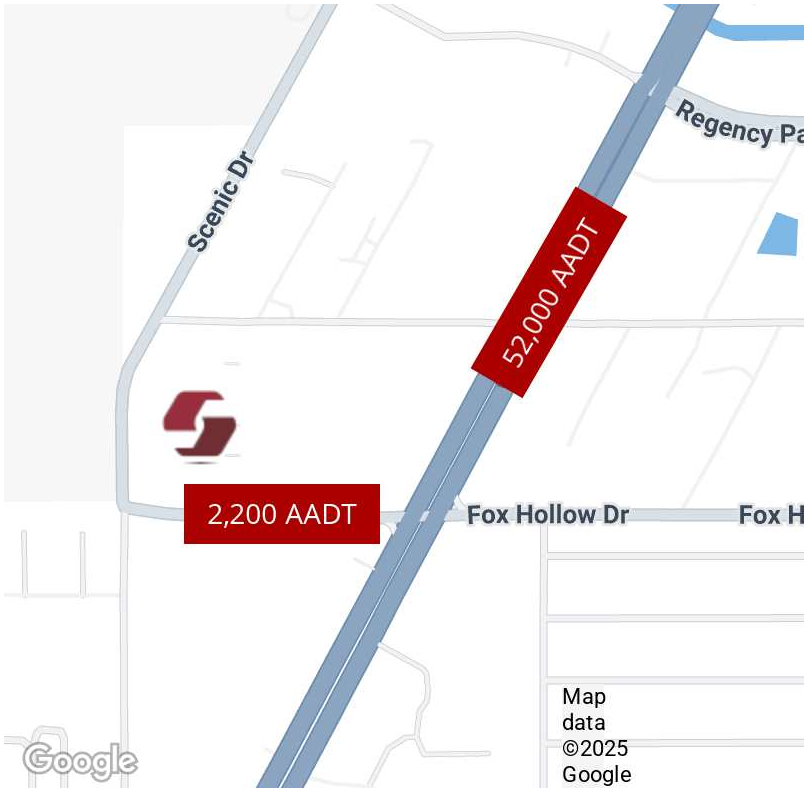
10017 US Highway 19 N Port Richey, FL 34668



PROPERTY HIGHLIGHTS

- Community center in the City of Port Richey, FL, located on US Highway 19 and Fox Hollow Drive
- US Highway 19 is a major north and south thoroughfare in Pasco County with traffic counts over 55,000 AADT, attracting residents from Pinellas and Hernando counties
- Join a great tenant mix: Home Depot, Dollar General, Anytime Fitness, Coast Dental, Optimart, Subway, and Metro PCS
- Floor plans available upon request!

| DEMOGRAPHICS      | 3 MILES  | 5 MILES  | 7 MILES  |
|-------------------|----------|----------|----------|
| Total Households  | 27,666   | 53,005   | 85,978   |
| Total Population  | 64,332   | 119,881  | 197,058  |
| Average HH Income | \$63,008 | \$67,350 | \$71,921 |



The Sembler Company | 800.940.6000 | <https://www.sembler.com>

JESSICA MORENO  
727.344.8134  
[jessica.moreno@sembler.com](mailto:jessica.moreno@sembler.com)

Although the Sembler Company has obtained the information contained herein from sources it believes to be reliable, and believes the information to be correct, no representations or warranties, express or implied, are made as to the accuracy or reliability of this information. Any references to square footage or age are approximate only. The recipient bears sole responsibility for verification of the accuracy of the information contained herein and bears all risk for any inaccuracies. The Sembler Company shall have no liability or responsibility to any party for any loss or damage arising from reliance by any party on the information contained herein. Site plans subject to change.



# HOME DEPOT PLAZA

10017 US Highway 19 N Port Richey, FL 34668



The Sembler Company | 800.940.6000 | <https://www.sembler.com>

**JESSICA MORENO**

727.344.8134

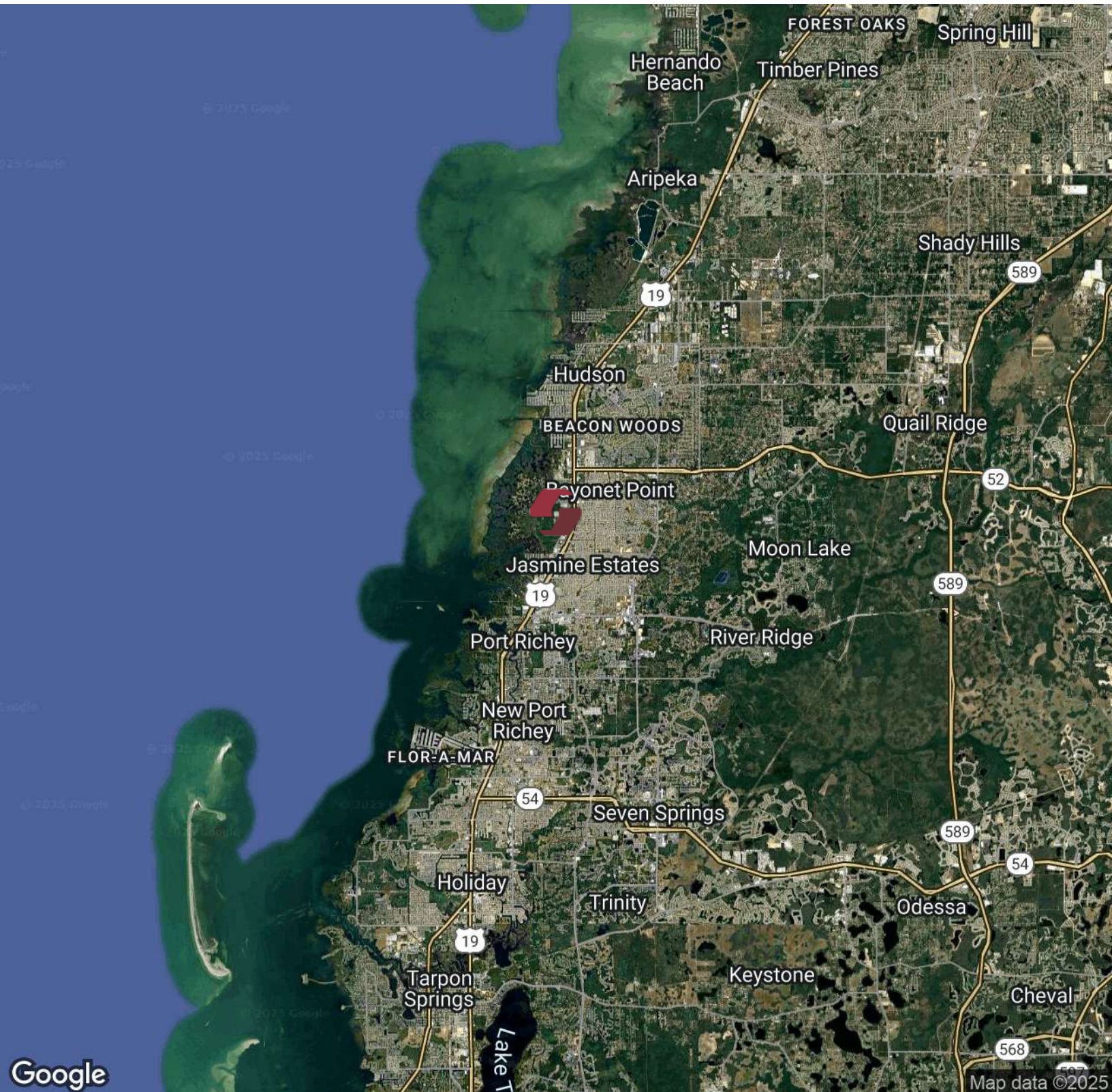
[jessica.moreno@sembler.com](mailto:jessica.moreno@sembler.com)

Although the Sembler Company has obtained the information contained herein from sources it believes to be reliable, and believes the information to be correct, no representations or warranties, express or implied, are made as to the accuracy or reliability of this information. Any references to square footage or age are approximate only. The recipient bears sole responsibility for verification of the accuracy of the information contained herein and bears all risk for any inaccuracies. The Sembler Company shall have no liability or responsibility to any party for any loss or damage arising from reliance by any party on the information contained herein. Site plans subject to change.



# HOME DEPOT PLAZA

10017 US Highway 19 N Port Richey, FL 34668



The Sembler Company | 800.940.6000 | <https://www.sembler.com>

**JESSICA MORENO**

727.344.8134

[jessica.moreno@sembler.com](mailto:jessica.moreno@sembler.com)

Although the Sembler Company has obtained the information contained herein from sources it believes to be reliable, and believes the information to be correct, no representations or warranties, express or implied, are made as to the accuracy or reliability of this information. Any references to square footage or age are approximate only. The recipient bears sole responsibility for verification of the accuracy of the information contained herein and bears all risk for any inaccuracies. The Sembler Company shall have no liability or responsibility to any party for any loss or damage arising from reliance by any party on the information contained herein. Site plans subject to change.



HOME DEPOT PLAZA

10017 US Highway 19 N Port Richey, FL 34668



SITE PLAN & AVAILABILITY

|       |                         |          |       |                 |           |
|-------|-------------------------|----------|-------|-----------------|-----------|
| 1010  | Cigar and Smoke Castle  | 2,600 SF | 111A  | Anytime Fitness | 9,000 SF  |
| 1030  | Shear Madness           | 1,300 SF | 3000  | AVAILABLE       | 35,000 SF |
| 1040  | AVAILABLE               | 1,913 SF | 5020  | Coast Dental    | 2,004 SF  |
| 1050  | Going Coastal Deli      | 1,200 SF | 5030  | VIPCare         | 2,949 SF  |
| 1060A | Optimart Inc.           | 1,050 SF | 5050  | Subway          | 1,227 SF  |
| 1060B | Floridian Shores Realty | 1,050 SF | 5060  | Metro PCS       | 1,259 SF  |
| 1070  | AVAILABLE SOON          | 900 SF   | 6000  | Dollar General  | 8,800 SF  |
| 1080  | Dip Nail Salon          | 1,878 SF | OP100 | Home Depot      | 99,224 SF |
| 1090  | Paris Barber Shop       | 1,400 SF | NIC   | 7 ELEVEN        | 1 SF      |

The Sembler Company | 800.940.6000 | <https://www.sembler.com>

JESSICA MORENO  
727.344.8134  
[jessica.moreno@sembler.com](mailto:jessica.moreno@sembler.com)

Although the Sembler Company has obtained the information contained herein from sources it believes to be reliable, and believes the information to be correct, no representations or warranties, express or implied, are made as to the accuracy or reliability of this information. Any references to square footage or age are approximate only. The recipient bears sole responsibility for verification of the accuracy of the information contained herein and bears all risk for any inaccuracies. The Sembler Company shall have no liability or responsibility to any party for any loss or damage arising from reliance by any party on the information contained herein. Site plans subject to change.