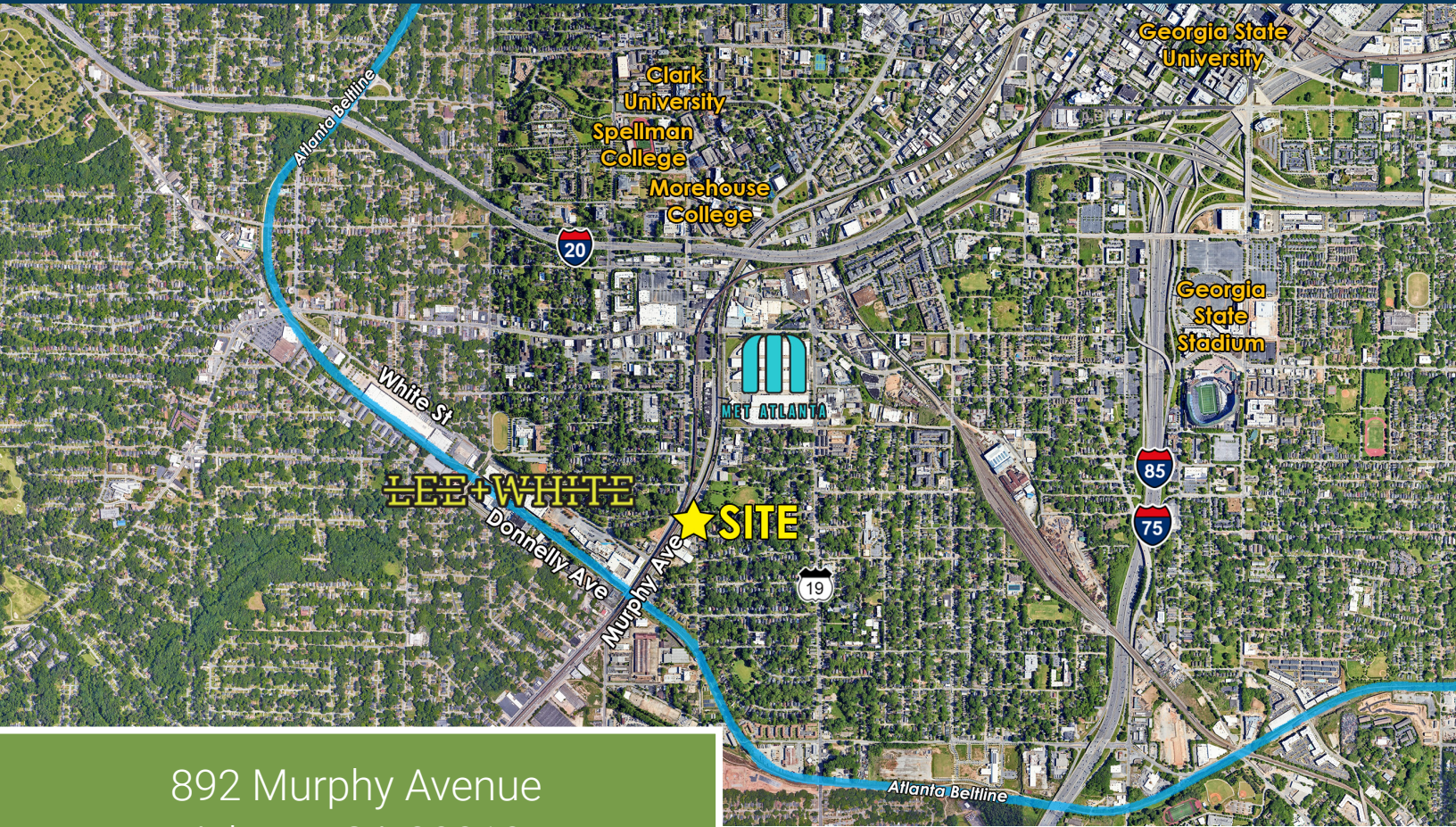


5,706± sf Industrial Building For Sale



892 Murphy Avenue
Atlanta, GA 30310

Property Details

- 5,706± sf industrial building on a 0.40± ac tract.
- Fenced yard
- 3 drive-in doors
- Zoned I1
- Located within 1/4 mile of Murphy Crossing planned development
- Located in a re-developing area near I-20, West End Mall, Adair Park, Lee + White, The Met, and The Atlanta Beltline
- Priced at \$1,319,000 (\$231.16/sf).



Peyton McWhirter
678.385.2705
pmm@mcwrealty.com

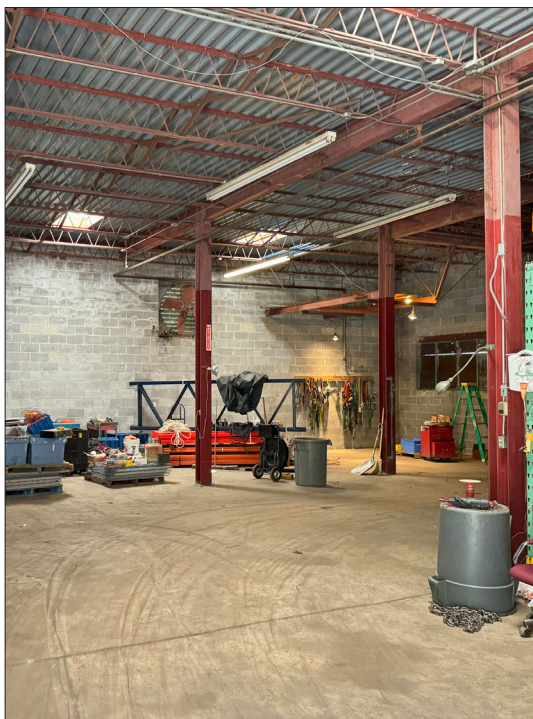
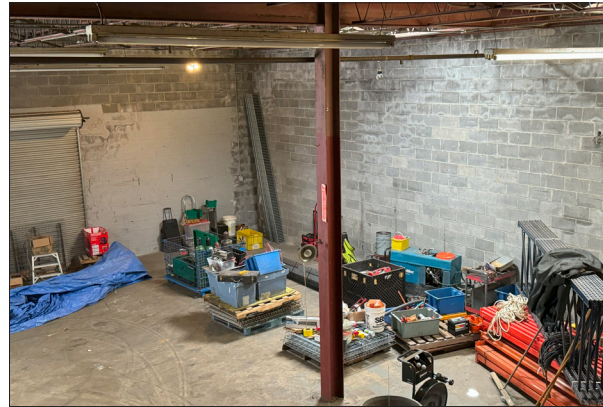
No warranty or representation, express or implied, is made as to the accuracy of the information contained herein, and same is subject to errors, omissions, change of price, rental or other conditions, withdrawal without notice, and to any special listing conditions, imposed by our principals.

McWhirter Realty Partners, LLC
294 Intersate North Circle, SE
Bldg 2, Suite 150
Atlanta, GA 30339
770.955.2000
www.mcwrealty.com



McWhirter
Commercial Real Estate Since 1981

892 Murphy Avenue
Atlanta, GA 30310



Peyton McWhirter
678.385.2705
pmm@mcwrealty.com

No warranty or representation, express or implied, is made as to the accuracy of the information contained herein, and same is subject to errors, omissions, change of price, rental or other conditions, withdrawal without notice, and to any special listing conditions, imposed by our principals.

McWhirter Realty Partners, LLC
294 Intersate North Circle, SE
Bldg 2, Suite 150
Atlanta, GA 30339
770.955.2000
www.mcwrealty.com



McWhirter
Commercial Real Estate Since 1981