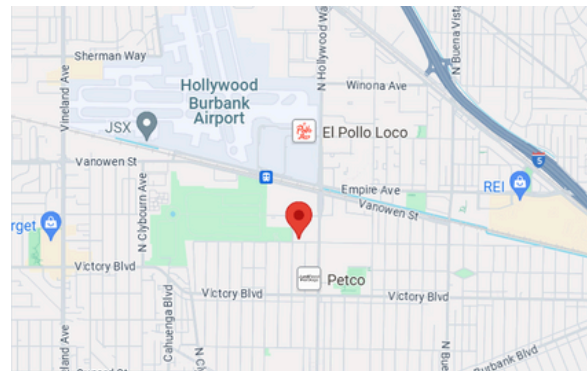




**INDUSTRIAL SPACE
BURBANK**
COMBINED ±8,700 SF AVAILABLE FOR LEASE

PRICING

\$1.79 SF/ NNN



PROPERTY DETAILS

- **Location:** Screenland Pacific Business Park
- **Feature:** Well maintained business park
- **Parking:** 16 Parking Spaces
- **Fees:** Low NNN Charges!
- **Configuration:** Reception, Conference rooms, Offices, kitchen, 4 bathrooms & multiple warehouse spaces
- **Loading Doors:** 4 GL!
- **Feature:** High Speed Fiber

GET IN TOUCH



RON FEDER
Senior Managing Director | DRE# 00983855
(818) 222-0404
RFEDER@RJFEDER.COM

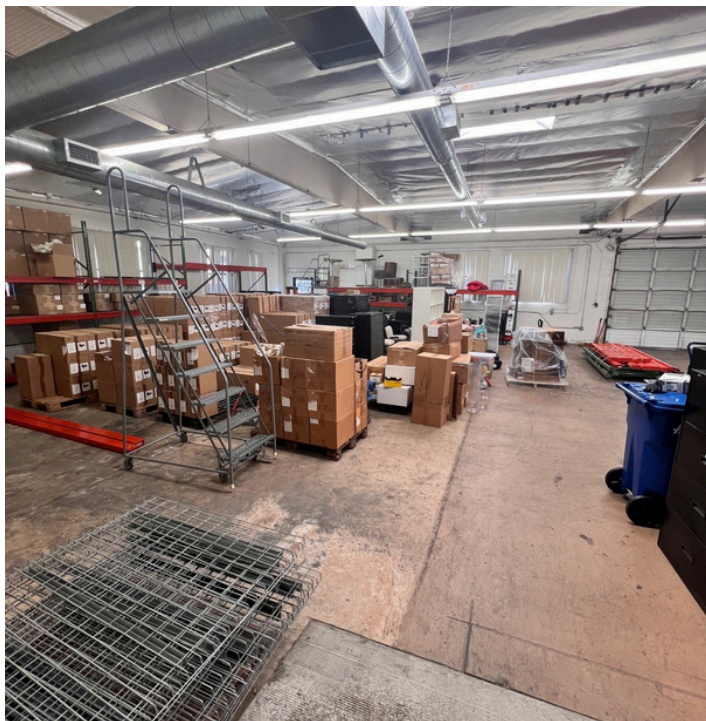
JOSEPH DAHAN
Investment Associate | DRE# 02121212
(424) 457-4049
JOSEPH@JDCREGROUP.COM

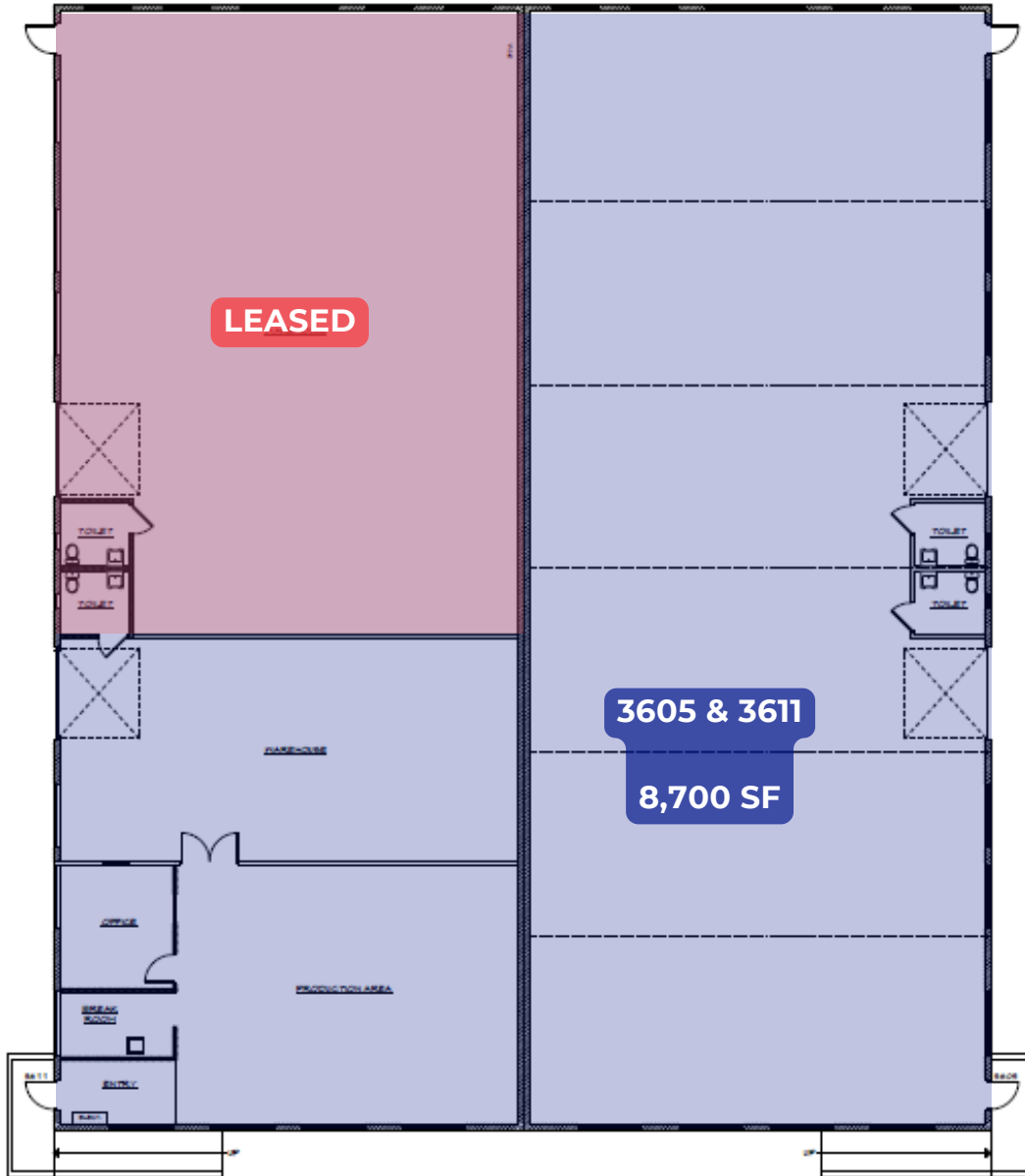
BROOKE FEDER-KENRICK
Commercial Associate | DRE# 02199320
(818) 451-3636
BKENRICK@RJFEDER.COM

3611A PHOTOS



3605 PHOTOS





FLOOR PLAN BUILDING 2
3605 PACIFIC AVENUE
3611 PACIFIC AVENUE

