



7001 Tower Road

**7001 Tower Road
Denver, Colorado**

Space Available:

Suite D: 14,107 RSF

Lease Rate:

\$16.50 NNN

Parking Ratio:

5.0:1,000 SF

Possession:

August 1, 2025

Office for Lease

Property Highlights

- Tower Road monument signage available
- Exterior suite entrance offering convenient and direct access to the space
- Great location in Denver International Business Center
- Excellent access to Pena Blvd., I-70 and DIA
- Multiple amenities in close proximity

For information, please contact:

Tim Harrington

t 303-260-4245

tim.harrington@nrmk.com

Alan Polacsek

t 303-260-4247

alan.polacsek@nrmk.com

Eddie Kane

t 303-260-4315

edward.kane@nrmk.com

Tally Latcham

t 303-260-4316

tally.latcham@nrmk.com

1800 Larimer Street, Suite 1700
Denver, CO 80202

nrmk.com

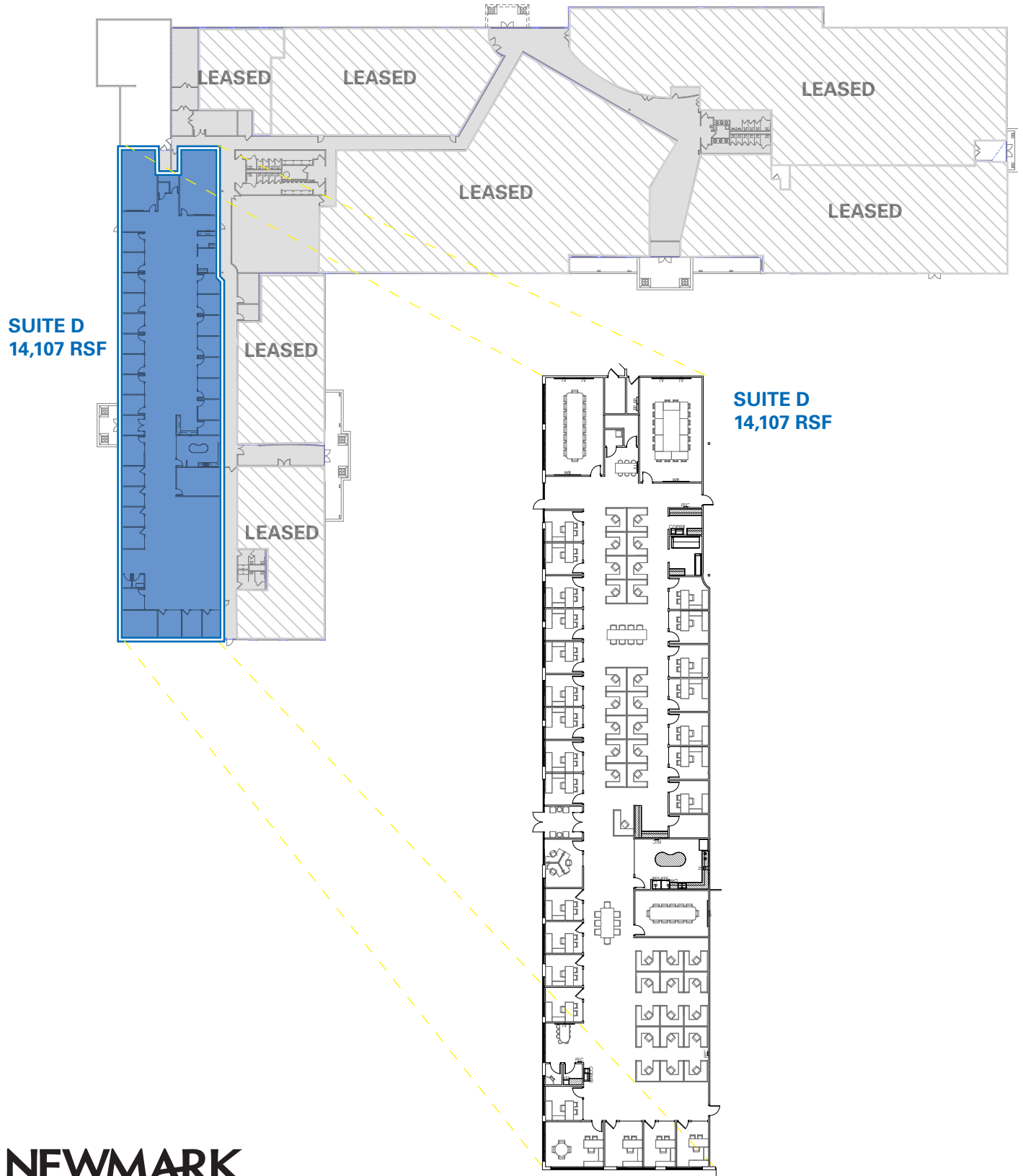
NEWMARK

The information contained herein has been obtained from sources deemed reliable but has not been verified and no guarantee, warranty or representation, either express or implied, is made with respect to such information. Terms of sale or lease and availability are subject to change or withdrawal without notice.

7001 TOWER ROAD | DENVER, COLORADO

Floorplan:

Suite D: 14,107 RSF



7001 TOWER ROAD | DENVER, COLORADO



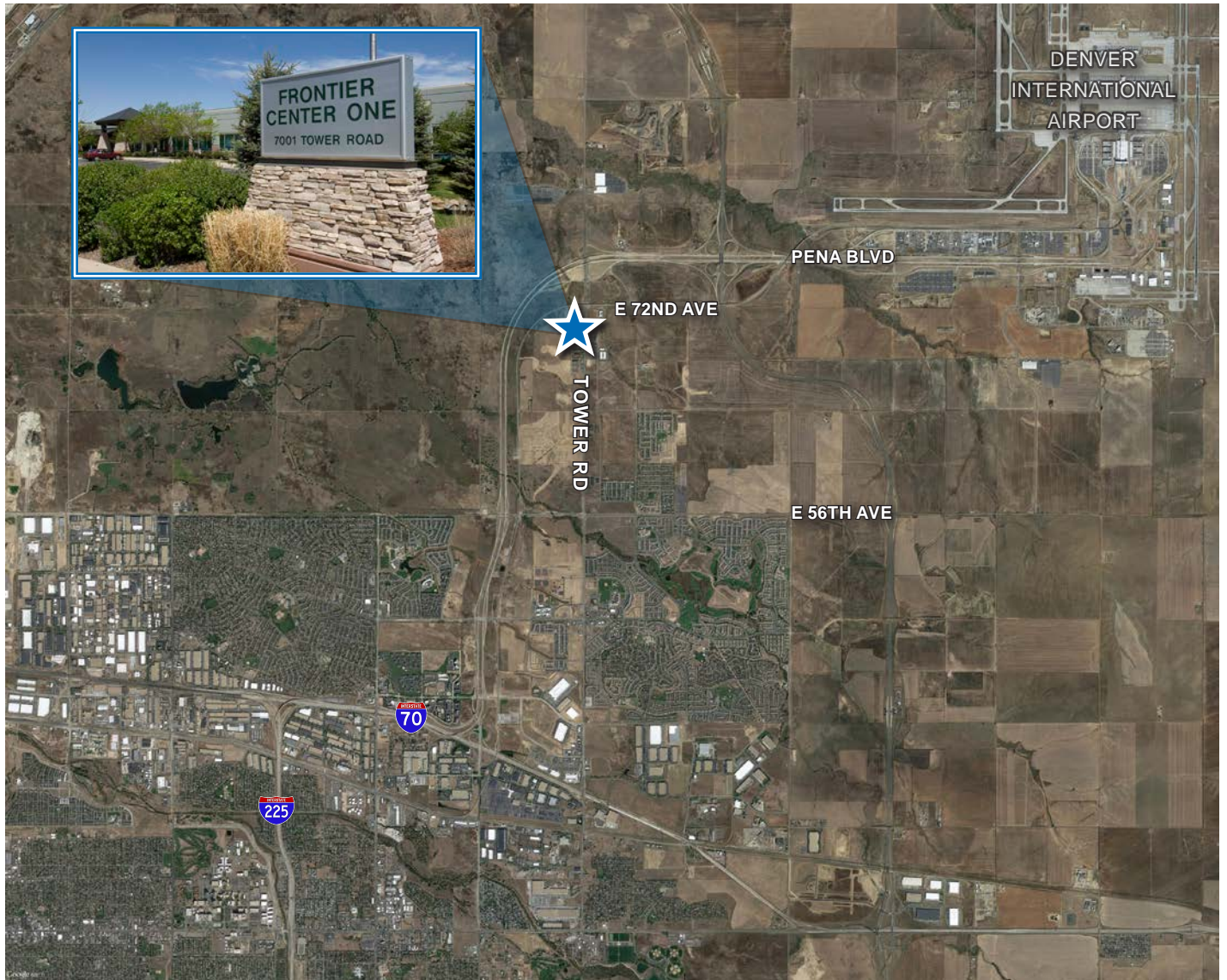
AERIAL VIEW



NEWMARK

7001 TOWER ROAD | DENVER, COLORADO

AREA LOCATION



Space Available: Suite D: 14,107 RSF

- Numerous restaurants and hotels in close proximity
- Located near Denver International Airport

- A Line accessibility at 61st and Pena Station; travel to Downtown Denver or DIA

CONTACT

Tim Harrington

t 303-260-4245

tim.harrington@nmrk.com

Alan Polacsek

t 303-260-4247

alan.polacsek@nmrk.com

Eddie Kane

t 303-260-4315

edward.kane@nmrk.com

Tally Latcham

t 303-260-4316

tally.latcham@nmrk.com