

OFFICE FOR LEASE

3800 Stillman Parkway

Richmond, Virginia 23233



**NEAR GASKINS RD.
& W. BROAD ST.**



PROPERTY FEATURES



MOVE-IN READY
NEW PAINT AND CARPET



TWO SUITES AVAILABLE
SUITE 100 - 2,387 SF
SUITE 202 - 1,270 SF



GREAT LOCATION
EASY ACCESS TO I-64
NEAR GASKINS & BROAD



PARKING
AMPLE ON-SITE PARKING



SIGNAGE
BUILDING & SUITE SIGNAGE AVAILABLE



TIMING
SUITE 100 - AVAILABLE Q1 2025
SUITE 202 - AVAILABLE IMMEDIATELY

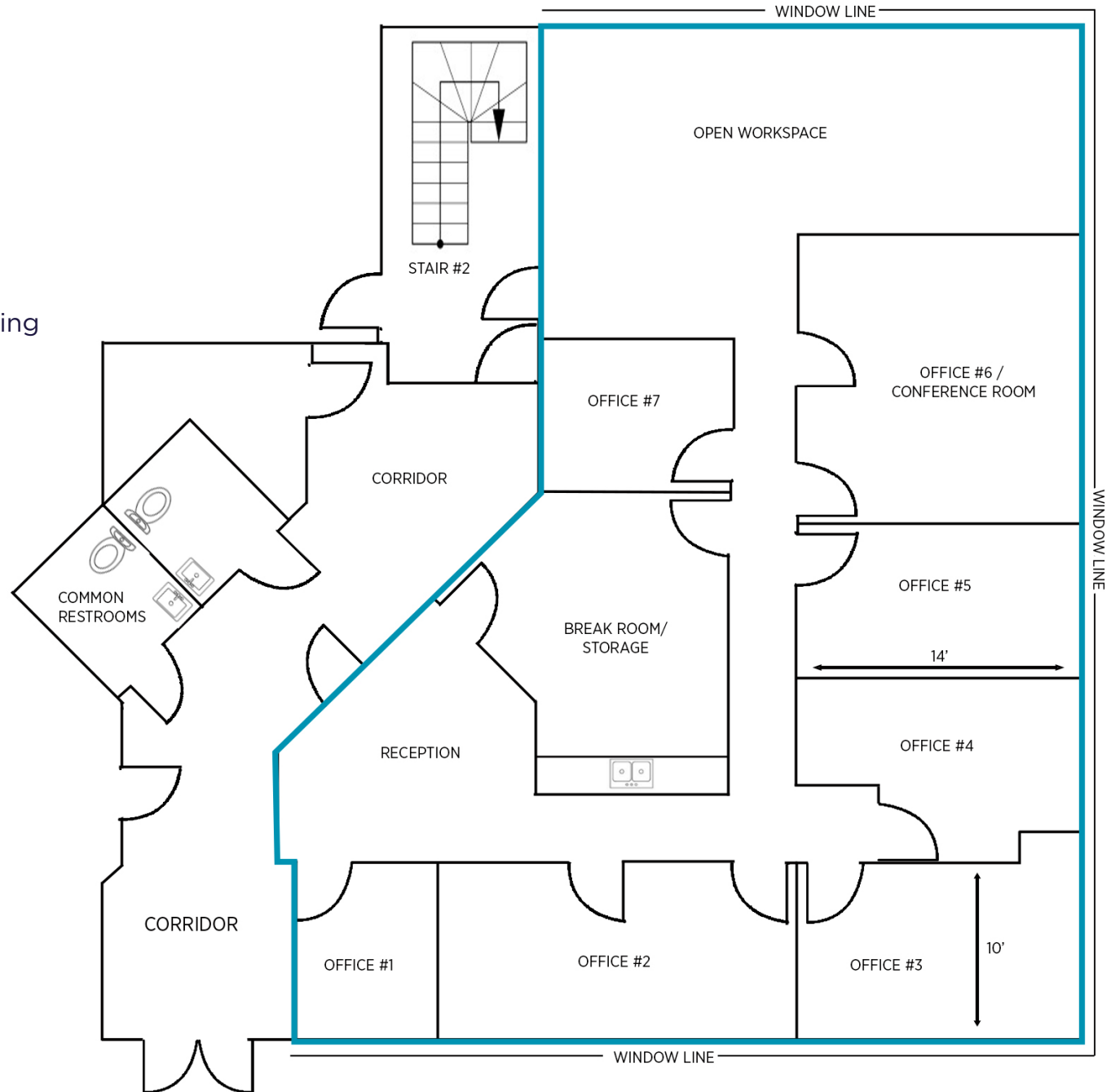


FLOORPLAN

SUITE 100

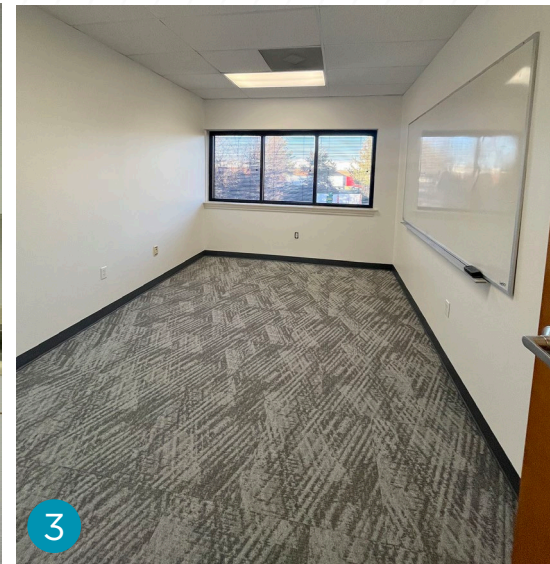
2,387 RSF ON 1ST FLOOR
AVAILABLE Q1 2025

- Reception area
- Perimeter offices & conferencing
- Large open workspace
- Break Room



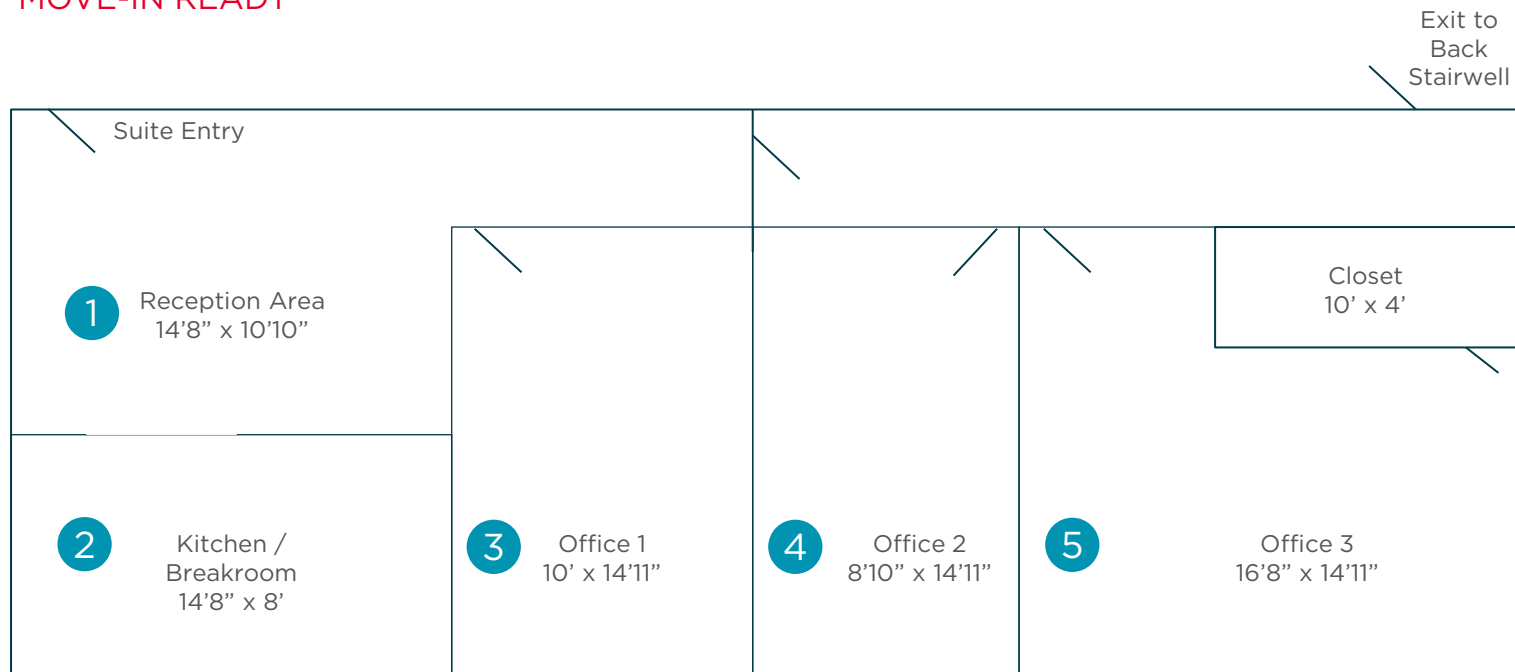
FLOORPLAN

SUITE 202



1,270 RSF ON 2ND FLOOR
AVAILABLE IMMEDIATELY
MOVE-IN READY

- Three perimeter offices with abundant natural light
- Break room with plumbing



LOCATION OVERVIEW





THALHIMER

CONTACT

KATE HOSKO
Vice President
804 344 7169
kate.hosko@thalhimer.com

CHRISSEY CHAPPELL
Associate
804 344 7179
chrissy.chappell@thalhimer.com

Thalhimer Center
11100 W. Broad Street
Glen Allen, VA 23060
thalhimer.com

Independently Owned and Operated / A Member of the Cushman & Wakefield Alliance

Cushman & Wakefield | Thalhimer © 2025. No warranty or representation, express or implied, is made to the accuracy or completeness of the information contained herein, and same is submitted subject to errors, omissions, change of price, rental or other conditions, withdrawal without notice, and to any special listing conditions imposed by the property owner(s). As applicable, we make no representation as to the condition of the property (or properties) in question.