

21 SE Third Street

EVANSVILLE, IN 47708

DOWNTOWN OFFICE SUITE

OFFERING MEMORANDUM



Class A Office Downtown. Access to Main Street shops and restaurants, Riverfront walkway, and the Stone Family Center for Health Sciences within blocks.

Year Built: 1999
Zoning: C-3
Parking : Parking Garage
Showing: Contact Broker
Location: SE Third & Locust Streets

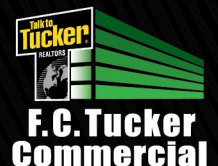


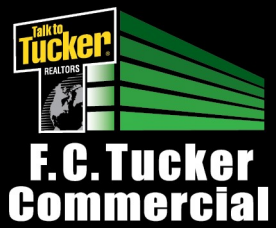
Kyle Bernhardt
Direct: 812.455.7577
Office: 812.473.6677
kylebernhardt@fctuckercommercial.com



7820 Eagle Crest Blvd. Suite 200
Evansville, IN • 47715
800-564-1024 • 812-473-6677

FCTuckerCommercial.com





21 SE Third Street

EVANSVILLE, IN 47708

SUITE 603

Suite 603

1,204 SF

\$20.50/SF/Full Service

Very nice Downtown corner office space featuring 2 offices, large open area, kitchenette and storage. There is an additional large conference room available for expansion if needed.

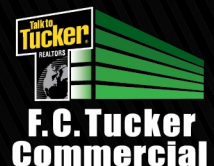


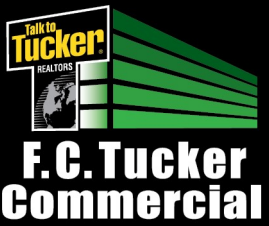
Kyle Bernhardt
Direct: 812.455.7577
Office: 812.473.6677
kylebernhardt@fctuckercommercial.com



7820 Eagle Crest Blvd. Suite 200
Evansville, IN • 47715
800-564-1024 • 812-473-6677

FCTuckerCommercial.com





21 SE Third Street

EVANSVILLE, IN 47708

SUITE 607

Suite 607

752 SF

\$20.00/SF/Full Service

Small corner office suite featuring 1 office, storage room, and small waiting/reception area.

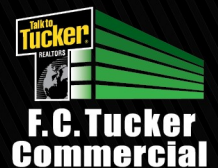


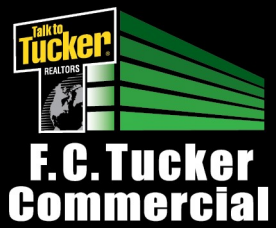
Kyle Bernhardt
Direct: 812.455.7577
Office: 812.473.6677
kylebernhardt@fctuckercommercial.com



7820 Eagle Crest Blvd. Suite 200
Evansville, IN • 47715
800-564-1024 • 812-473-6677

FCTuckerCommercial.com





21 SE Third Street

EVANSVILLE, IN 47708

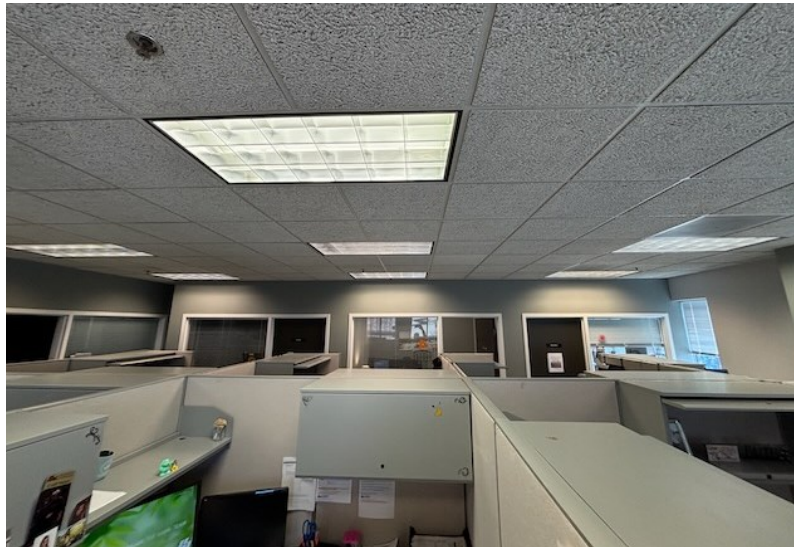
SUITE 710

Suite 710

1,672 SF

\$20.50/SF/Full Service

Updated Office suite featuring 4 small offices and large open cubical area. The space has river views and could be combined with Suite 715 if a large conference space is needed.

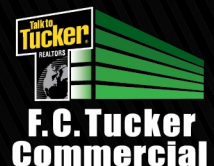


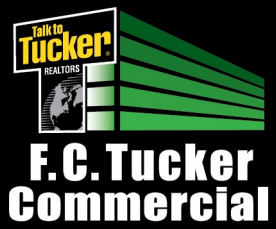
Kyle Bernhardt
Direct: 812.455.7577
Office: 812.473.6677
kylebernhardt@fctuckercommercial.com



7820 Eagle Crest Blvd. Suite 200
Evansville, IN • 47715
800-564-1024 • 812-473-6677

FCTuckerCommercial.com





21 SE Third Street

EVANSVILLE, IN 47708

SUITE 715

Suite 715

765 SF

\$20.00/SF/Full Service

Large open conference or workspace with river views. A kitchenette is available for use on this floor as well.

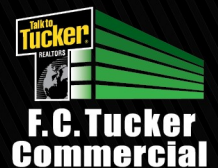


Kyle Bernhardt
Direct: 812.455.7577
Office: 812.473.6677
kylebernhardt@fctuckercommercial.com



7820 Eagle Crest Blvd. Suite 200
Evansville, IN • 47715
800-564-1024 • 812-473-6677

FCTuckerCommercial.com



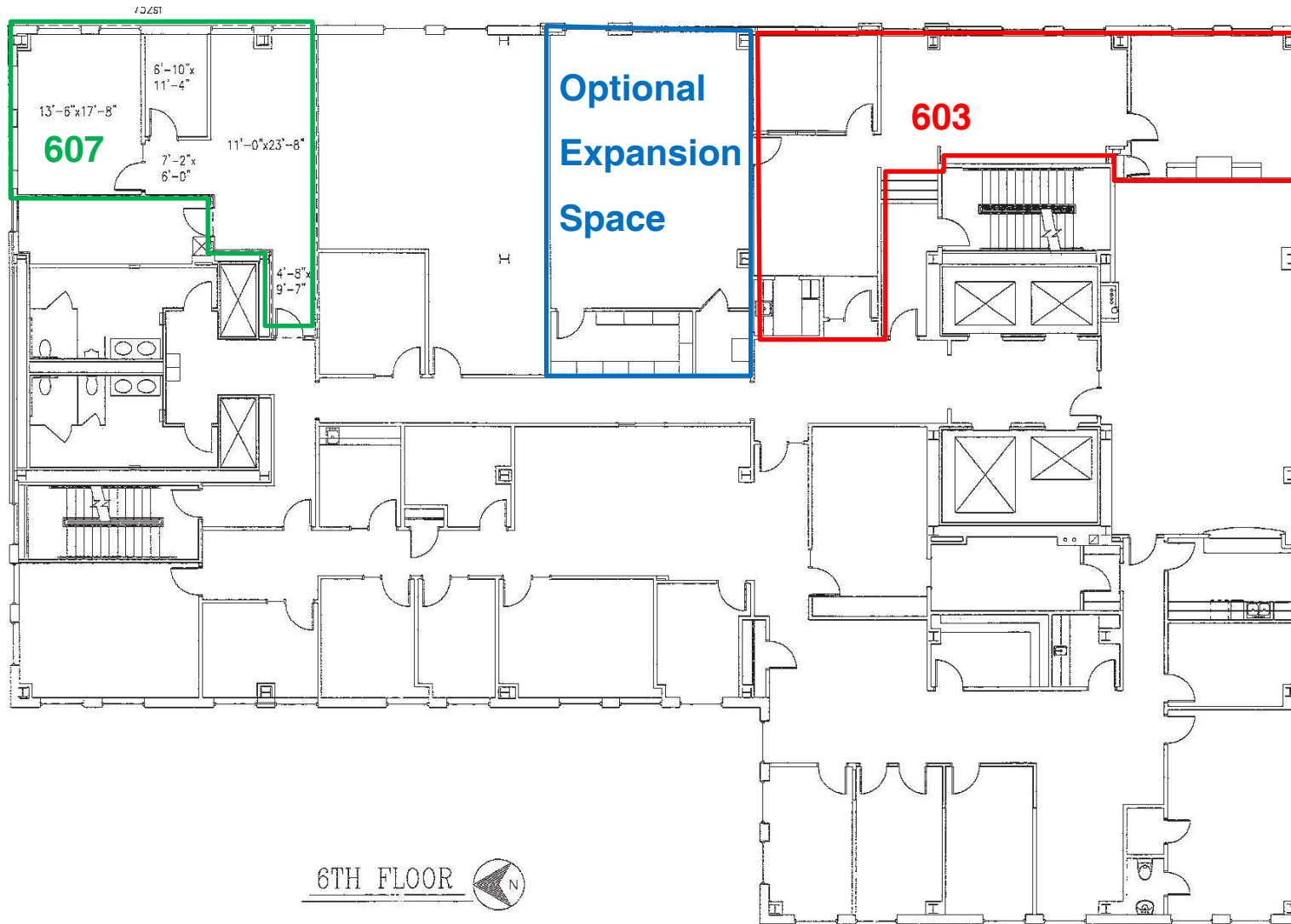


**F.C. Tucker
Commercial**

21 SE Third Street

EVANSVILLE, IN 47708

6TH FLOOR



Suite 603
1,204 SF

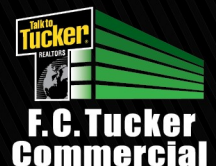
Suite 607
752 SF

Kyle Bernhardt
Direct: 812.455.7577
Office: 812.473.6677
kylebernhardt@fctuckercommercial.com



7820 Eagle Crest Blvd. Suite 200
Evansville, IN • 47715
800-564-1024 • 812-473-6677

FCTuckerCommercial.com



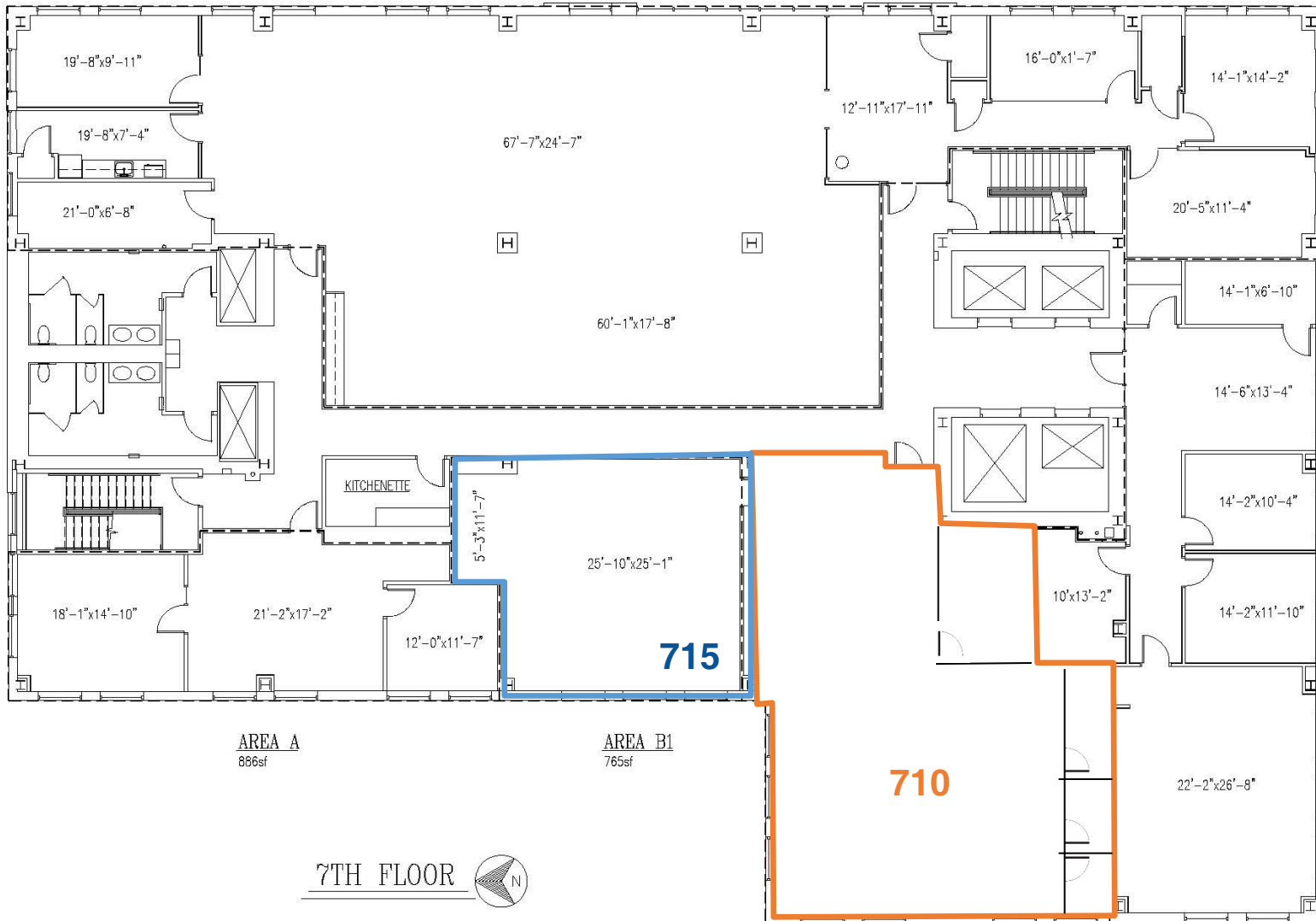


**F.C. Tucker
Commercial**

21 SE Third Street

EVANSVILLE, IN 47708

7TH FLOOR



Suite 710
1,672 SF

Suite 715
765 SF

Kyle Bernhardt
Direct: 812.455.7577
Office: 812.473.6677
kylebernhardt@fctuckercommercial.com



7820 Eagle Crest Blvd. Suite 200
Evansville, IN • 47715
800-564-1024 • 812-473-6677

FCTuckerCommercial.com

