



20 Forbes Road

Northborough, MA

±32,452 - 73,661 SF

Industrial/Flex Space

JLL's Industrial team is pleased to bring to your attention the availability of ±73,661 SF of Industrial/Flex space at 20 Forbes Road in Northborough's I-290 Industrial Park. The available space has nine tailboard docks and a clear height of 21'6".

The property is conveniently located near the intersection of I-290/I-495, and is easily accessible to the Massachusetts Turnpike, Routes 2 and 9.

Building specifications

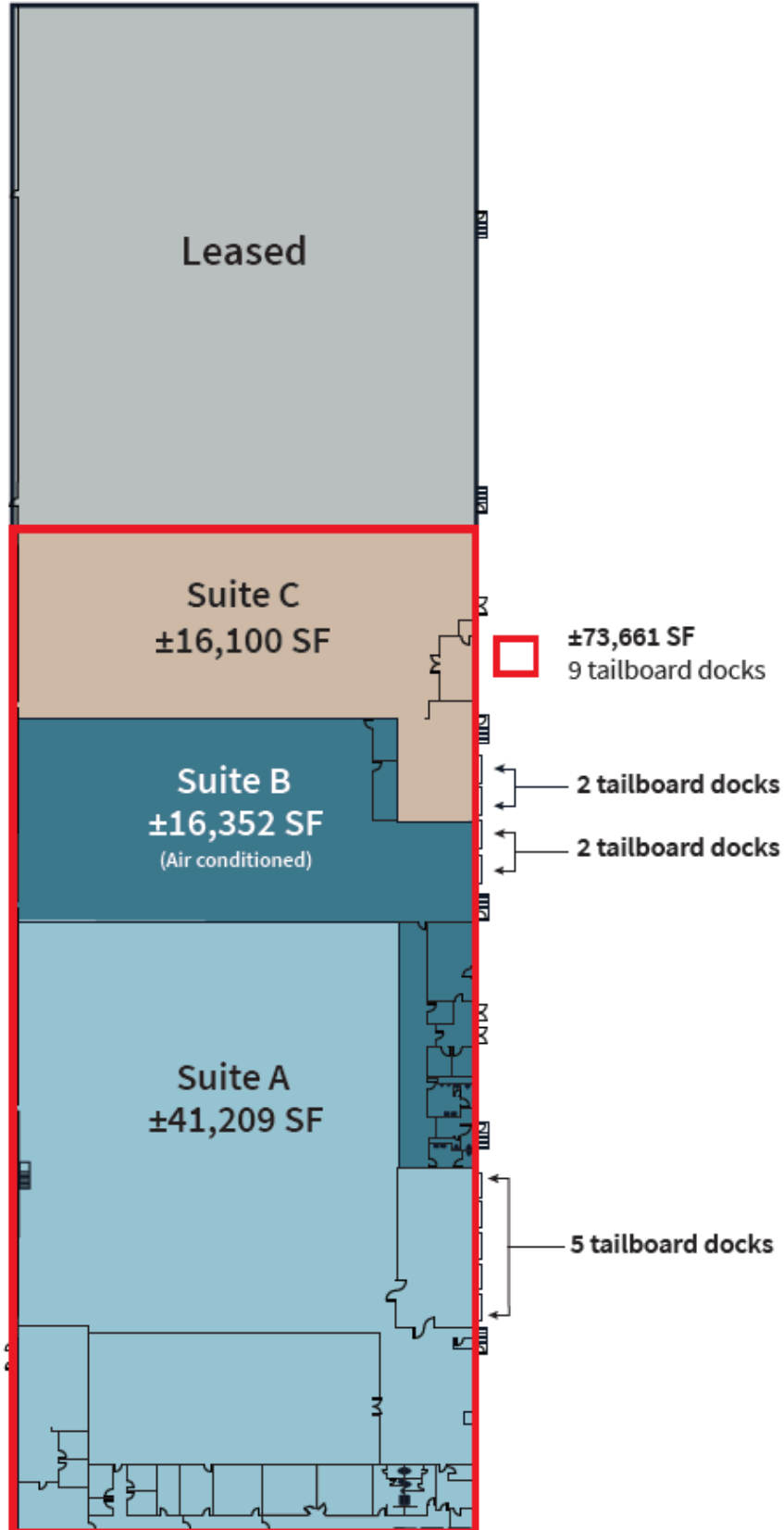
- Total building size: ±110,339 SF
- Suite A: ±41,209 SF
 - Warehouse: ±36,409 SF
 - Office: ±4,800 SF
- Suite B/C: ±32,452 SF
 - Warehouse: ±30,052 SF
 - Office: ±2,400 SF
- Clear height: 18' - 21'6"
- Sprinkler system: Wet
- Parking: ±2.3/1,000 SF
- Loading:
 - Suite A: Five (5) tailboard docks
 - Suite B/C: Four (4) tailboard docks
- Bay spacing: 30' x 40'
- Electrical: 2,000a, 277/480v, 3p, 4w (entire building)
- Utilities
 - Electric: National Grid
 - Gas: Eversource
 - Water/Sewer: Town of Northborough

Site plan

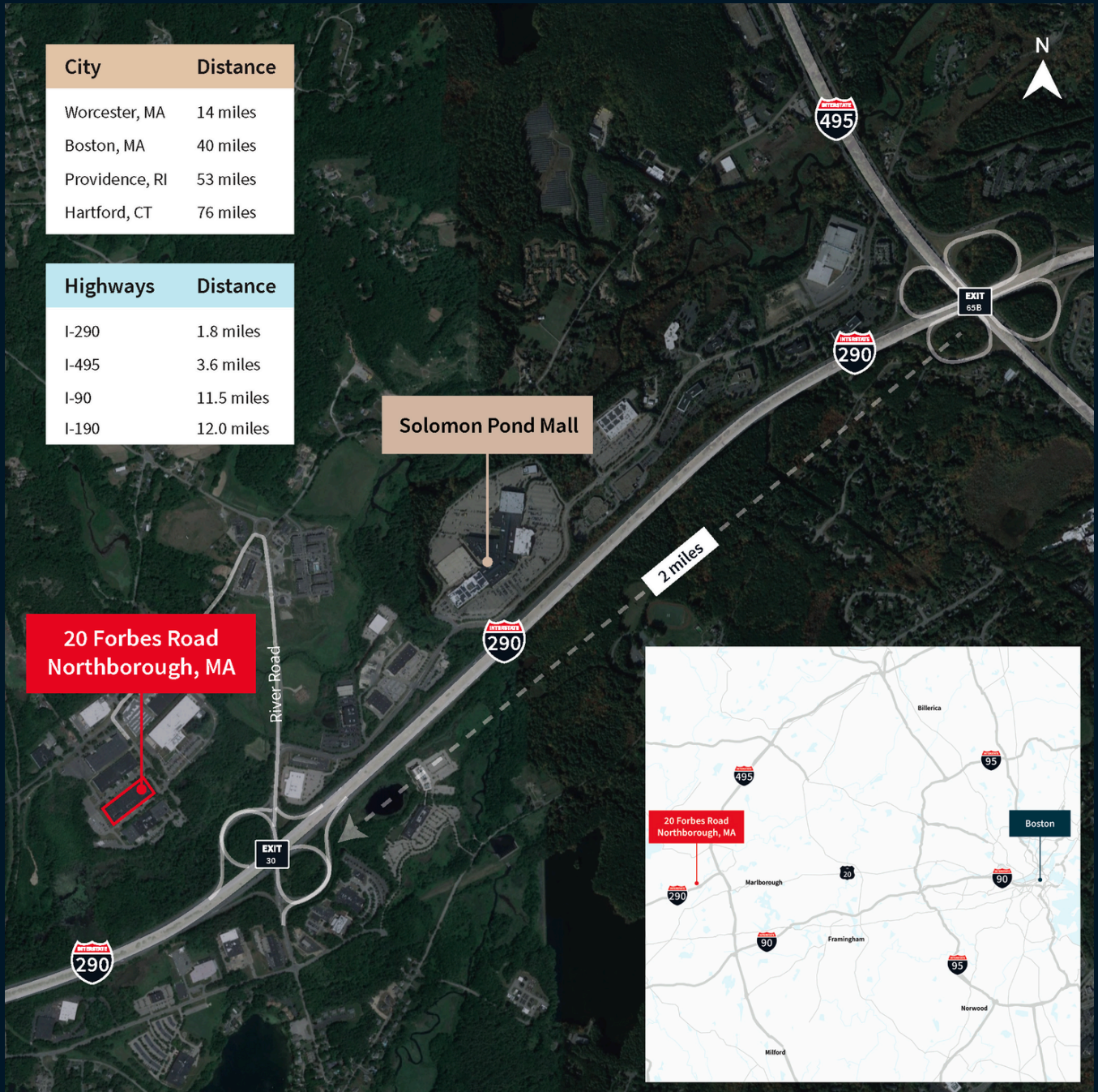


Floor plan

±32,452 - 73,661 SF



Aerial



City	Distance
Worcester, MA	14 miles
Boston, MA	40 miles
Providence, RI	53 miles
Hartford, CT	76 miles

Highways	Distance
I-290	1.8 miles
I-495	3.6 miles
I-90	11.5 miles
I-190	12.0 miles

**20 Forbes Road
Northborough, MA**

Solomon Pond Mall



Contact Us

Rachel Marks
Managing Director
Rachel.Marks@jll.com
+1 508 259 2440

Chelsea Andre
Vice President
Chelsea.Andre@jll.com
+1 508 951 7817

Joe Fabiano
Managing Director
Joe.Fabiano@jll.com
+1 781 844 7893

Michael Ciummei
Managing Director
Michael.Ciummei@jll.com
+1 978 621 7241

Dane Caracino
Associate
Dane.Caracino@jll.com
+1 617 640 0316