

# FOR SALE

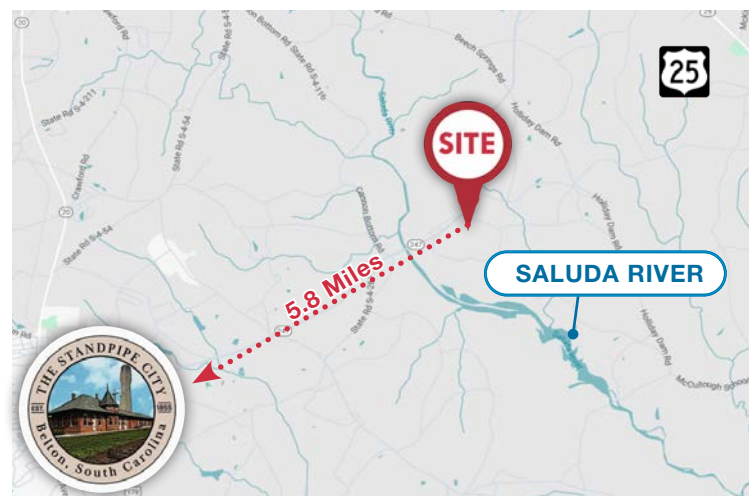
Holliday Circle, Belton, SC 29627



**±94 Acres Between Holliday Circle and the Saluda River**

## PROPERTY HIGHLIGHTS

- **SALE PRICE: \$20,000/Acre**
- Greenville County TM#: P/O 0607010102700
- Unzoned raw land: ±94 Acres
- Private boat ramp on Saluda River
- River Frontage: 2,500'
- Less than 5 miles to Hwy 25
- Interior road system
- Good mix of wooded area and open pasture
- Less than 30 minutes from Downtown Greenville
- Excellent hunting opportunities



**Ben Duncan** | Associate  
864 313 3965 | [bduncan@naief.com](mailto:bduncan@naief.com)

**NAI** Earle Furman

All information contained herein is from sources deemed reliable; however, no representation or warranty is made to the accuracy thereof.



# PHOTOS

Holliday Circle | Belton, SC 29627





# PHOTOS

Holliday Circle | Belton, SC 29627





# MAPS

Holliday Circle | Belton, SC 29627

Aerial



NAI Earle Furman

06/17/2020  
Holliday Circle, Belton, SC 29627

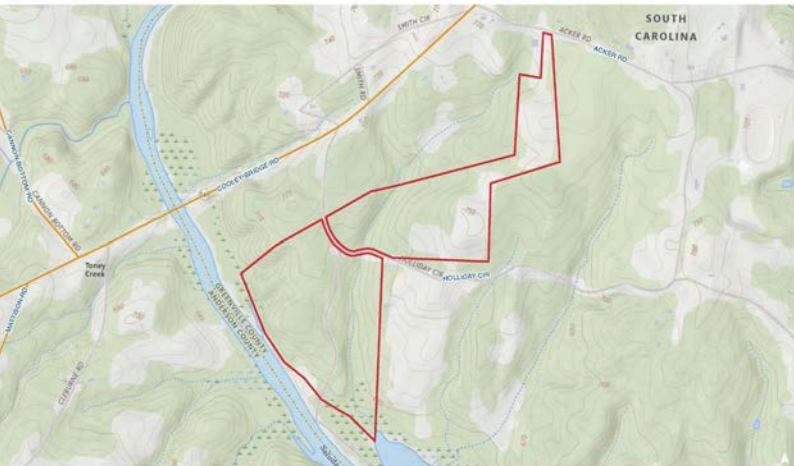
2020 Infrared



NAI Earle Furman

06/17/2020  
Holliday Circle, Belton, SC 29627

Topographical Map



NAI Earle Furman

06/17/2020  
Holliday Circle, Belton, SC 29627

Flood Zones



NAI Earle Furman

06/17/2020  
Holliday Circle, Belton, SC 29627

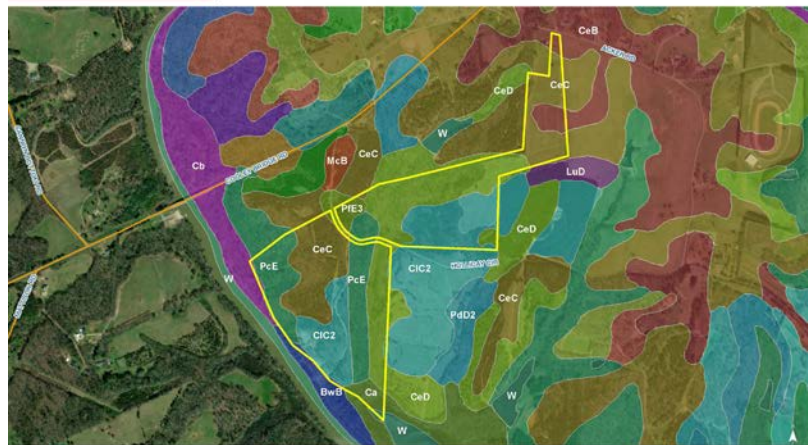
National Wetlands Inventory



NAI Earle Furman

06/17/2020  
Holliday Circle, Belton, SC 29627

Soil Survey



NAI Earle Furman

06/17/2020  
Holliday Circle, Belton, SC 29627

**NAI Earle Furman**

**Ben Duncan** | Associate  
864 313 3965 | [bduncan@naief.com](mailto:bduncan@naief.com)

All information contained herein is from sources deemed reliable; however, no representation or warranty is made to the accuracy thereof.