



FOR LEASE

2175 S. Jasmine Street

Denver, CO 80222



## Office Space Available

### 1st Floor Office/Flex Space:

Lease Rate: \$12.00/SF NNN

NNN's: \$5.43/SF

### 2nd Floor Office Space:

Lease Rate: \$15.00/SF FSG

- Local ownership
- On-site parking
- Close to I-25 and Evans Ave.
- Numerous amenities within walking distance

**Blake Kahlich**

M: 303 319 9079  
blake@primesqft.com

**TK Hammond**

M: 303 763 0551  
tk@primesqft.com



FOR LEASE

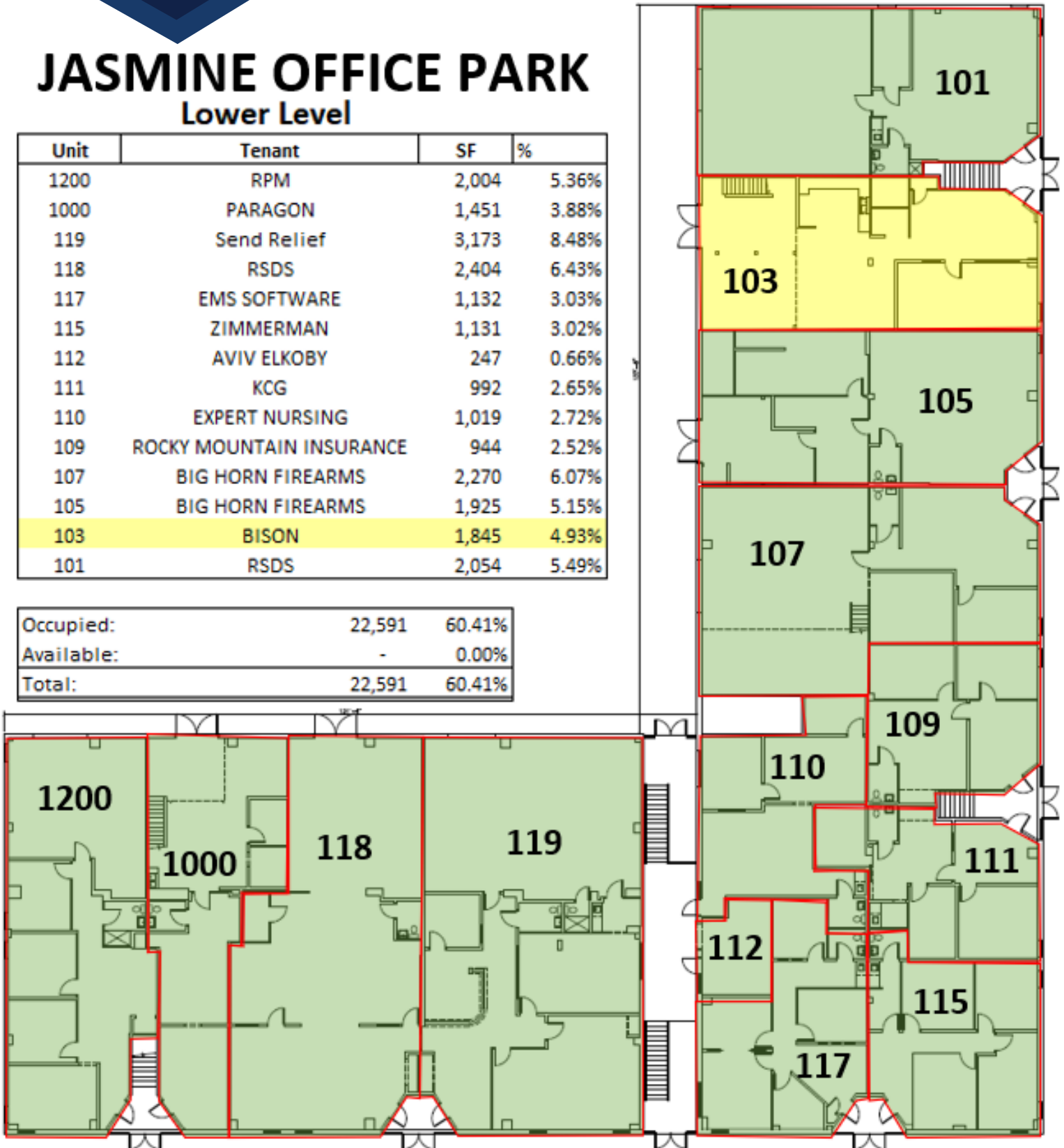
2175 S. Jasmine Street

Denver, CO 80222

## JASMINE OFFICE PARK Lower Level

Unit	Tenant	SF	%
1200	RPM	2,004	5.36%
1000	PARAGON	1,451	3.88%
119	Send Relief	3,173	8.48%
118	RSDS	2,404	6.43%
117	EMS SOFTWARE	1,132	3.03%
115	ZIMMERMAN	1,131	3.02%
112	AVIV ELKOBY	247	0.66%
111	KCG	992	2.65%
110	EXPERT NURSING	1,019	2.72%
109	ROCKY MOUNTAIN INSURANCE	944	2.52%
107	BIG HORN FIREARMS	2,270	6.07%
105	BIG HORN FIREARMS	1,925	5.15%
103	BISON	1,845	4.93%
101	RSDS	2,054	5.49%

Occupied:	22,591	60.41%
Available:	-	0.00%
Total:	22,591	60.41%





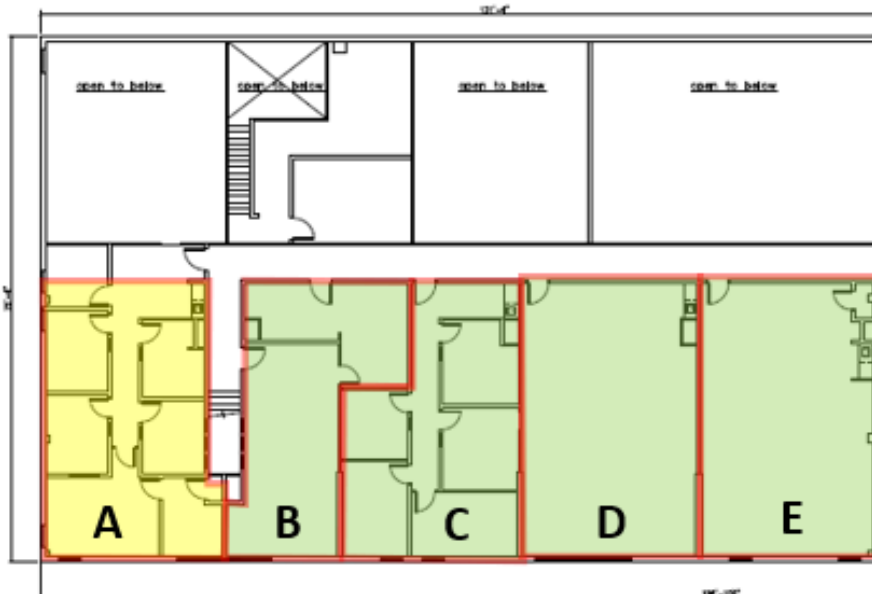
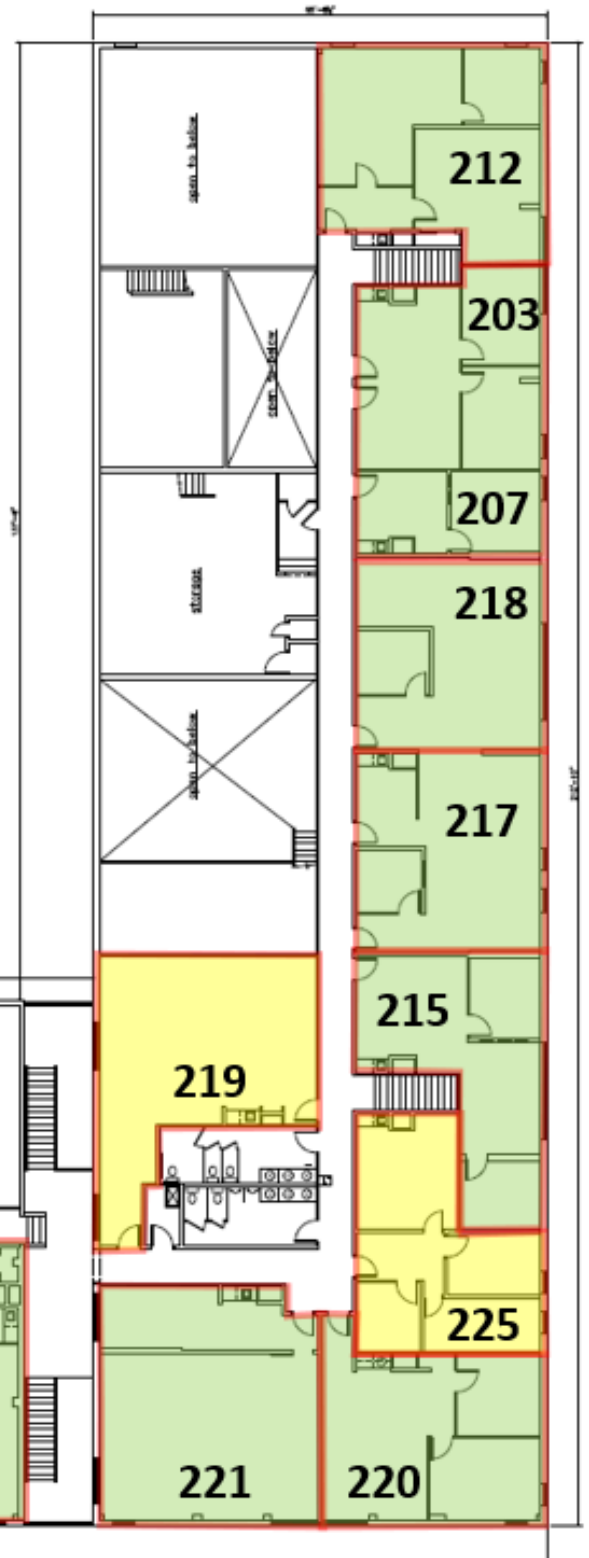
FOR LEASE

2175 S. Jasmine Street

Denver, CO 80222

## JASMINE OFFICE PARK Upper Level

Unit	Tenant	SF
A	AVAILABLE	1,271
B	Barbershop	850
C	Send Relief	1,015
D	Send Relief	1,191
E	Front Range CPR	1,197
221	Studio 15	1,288
220	Studio 15	990
225	AVAILABLE	846
219	AVAILABLE	1,056
215	Azin Home	870
217	Anastasiya Fadeyeva	908
218	Tephra Solar	907
207 & 203	Bully Recovery	1,267
212	John Gay	1,149





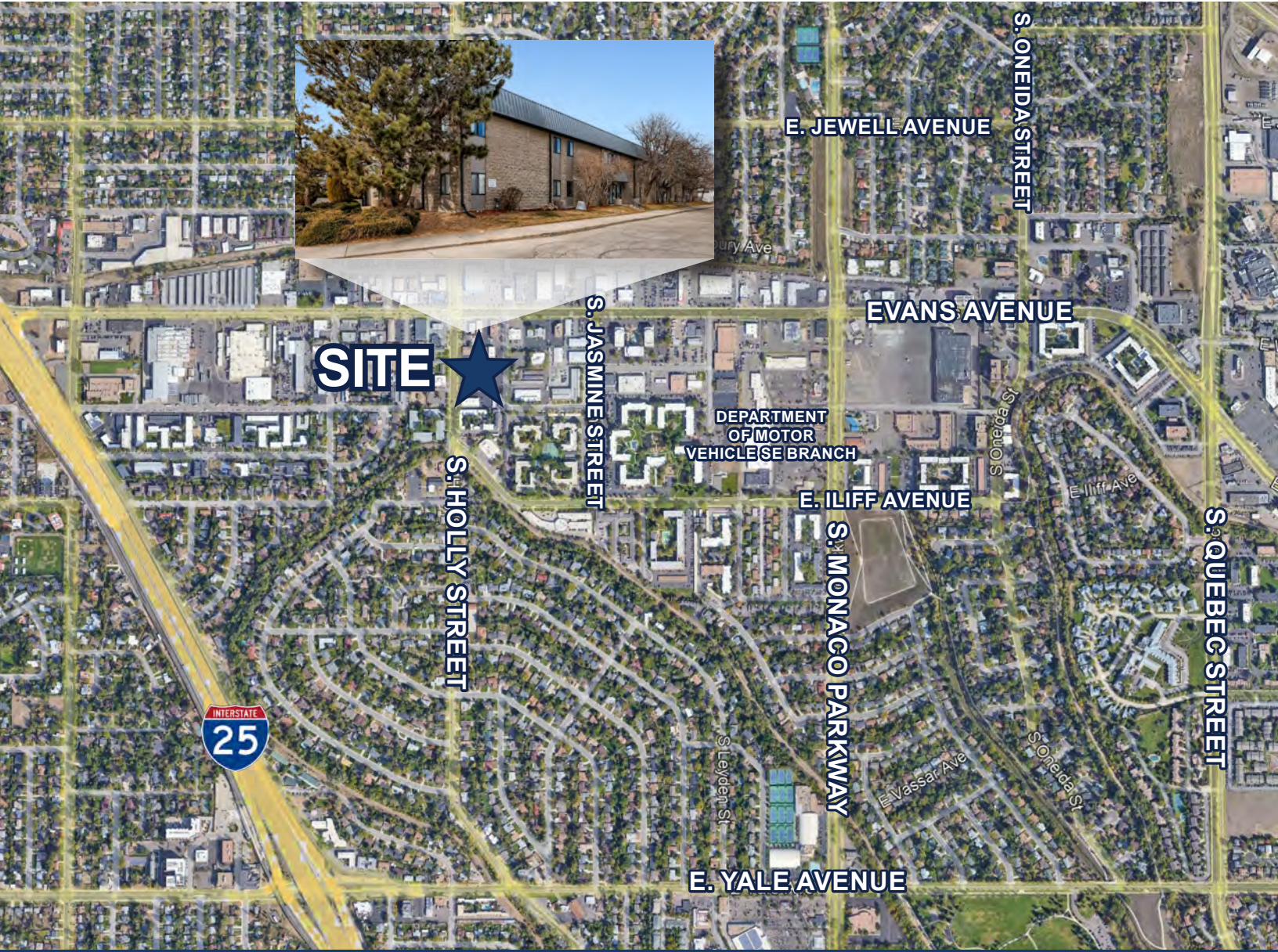
FOR LEASE

# 2175 S. Jasmine Street

Denver, CO 80222

## Demographics

	1 Mile	5 Miles	10 Miles
Population	19,473	449,560	1,512,525



**Blake Kahlich**  
M: 303 319 9079  
blake@primesqft.com

**TK Hammond**  
M: 303 763 0551  
tk@primesqft.com

**PRIME MANAGEMENT LLC**  
1888 Sherman Street, Suite 500  
Denver, Colorado 80203  
primesqft.com