

SALE

138-COMMERCIAL-LAND

138 R Jonesboro, GA 30236



PROPERTY DESCRIPTION

This is a wooded lot, with gradual slop in the back, estimated 542 feet frontage on GA -HWY 138. it has multiple access, from GA HYW 138 and side street from Stockbridge rd.

Has access to utilities and Sewer.

Close to many communities, city of Jonesboro, businesses on Stockbridge Rd and Clayton county international park on Walt Stephens Rd

PROPERTY HIGHLIGHTS

- This property has great road access on 138, with Middle lane curb-cut . It has about 542 feet of frontage on GA-Hwy-138. Has access to all the main utilities. Near business, schools, shops and many communities.

OFFERING SUMMARY

Sale Price:	\$380,000
Lot Size:	Estimated 2.25 Ac
Zoning:	Commercial Mixed
APN:	12018A A

DEMOGRAPHICS	1 MILE	3 MILES	5 MILES
Total Households	2,633	22,544	59,271
Total Population	9,299	71,638	180,399
Average HH Income	\$41,174	\$50,472	\$51,714

Adam Shekarabi
770 632 1774



COLDWELL BANKER
COMMERCIAL
BULLARD

SALE

138-COMMERCIAL-LAND

138 R Jonesboro, GA 30236

SALE PRICE

\$380,000

PROPERTY INFORMATION

Property Type	Land
Property Subtype	Retail
Zoning	Commercial Mixed Use
Lot Size	Estimated 2.25 Acres
APN #	12018A A030

LOCATION INFORMATION

Building Name	138-commercial-Land
Street Address	138 R
City, State, Zip	Jonesboro, GA 30236
County	Clayton
Market	Jonesbor
Sub-market	Jonesboro/Clayton County
Cross-Streets	GA-Highway 138

PARKING & TRANSPORTATION

UTILITIES & AMENITIES

BUILDING INFORMATION

Building Size	0 SF
Occupancy %	0%
Tenancy	Single
Ceiling Height	0 ft
Minimum Ceiling Height	0 ft
Number of Floors	0
Average Floor Size	0 SF
Year Built	2021
Year Last Renovated	0
Number of Lots	1
Best Use	Mixed-Use, Retail & Townhomes, Retail & Office



Adam Shekarabi
770 632 1774

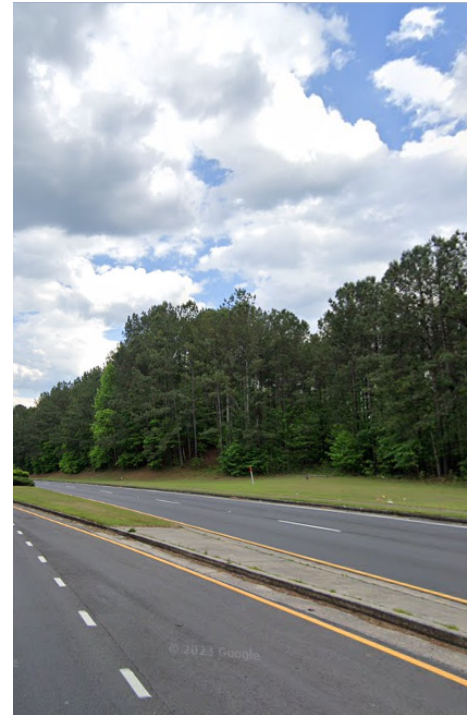
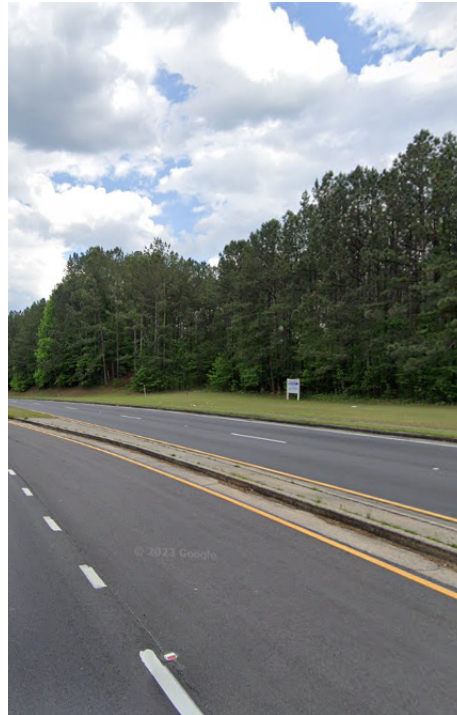


**COLDWELL BANKER
COMMERCIAL**
BULLARD

SALE

138-COMMERCIAL-LAND

138 R Jonesboro, GA 30236



Adam Shekarabi
770 632 1774

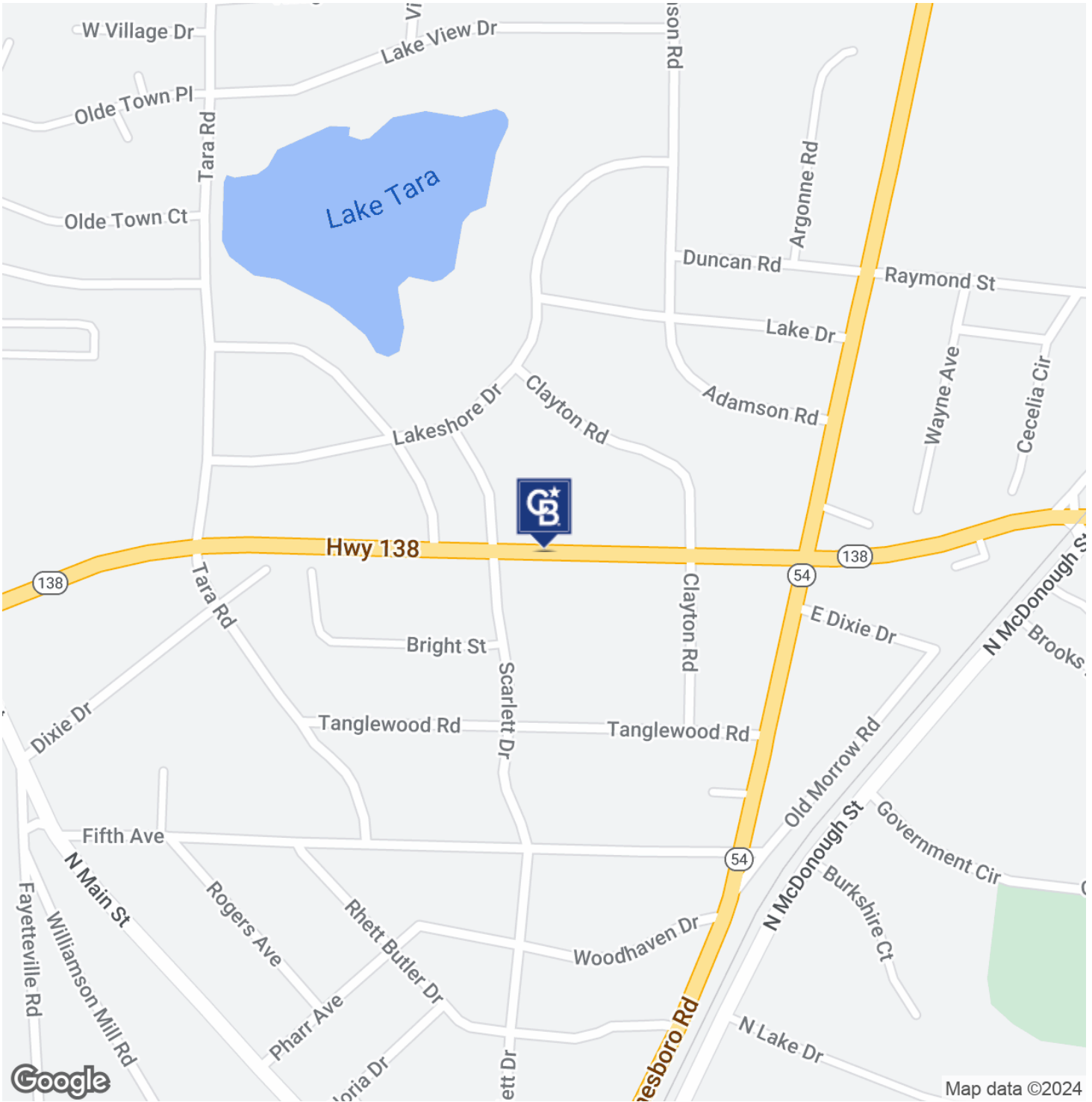


COLDWELL BANKER
COMMERCIAL
BULLARD

SALE

138-COMMERCIAL-LAND

138 R Jonesboro, GA 30236



Adam Shekarabi
770 632 1774

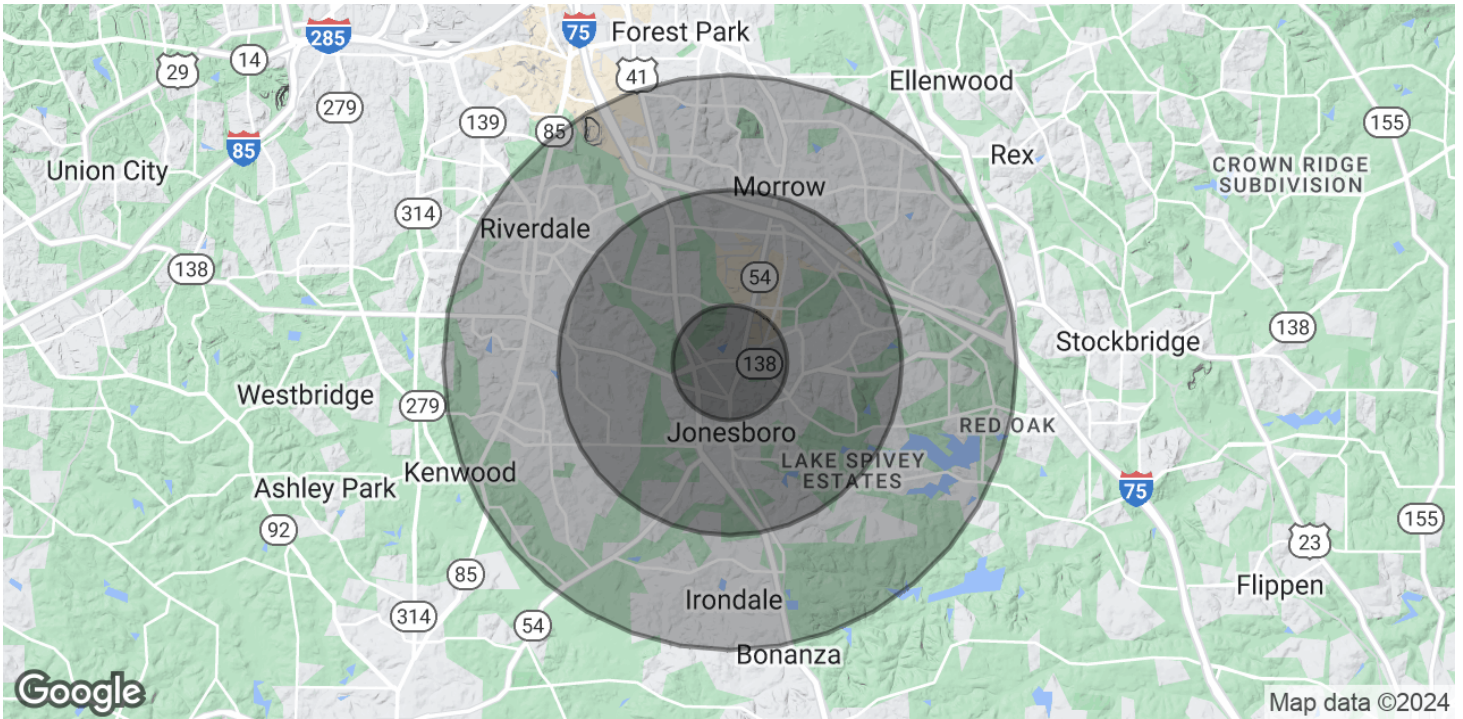


COLDWELL BANKER
COMMERCIAL
BULLARD

SALE

138-COMMERCIAL-LAND

138 R Jonesboro, GA 30236



POPULATION	1 MILE	3 MILES	5 MILES
Total Population	9,299	71,638	180,399
Average Age	30.2	30.8	31.3
Average Age (Male)	30.1	29.2	29.4
Average Age (Female)	30.4	32.3	33.1
HOUSEHOLDS & INCOME	1 MILE	3 MILES	5 MILES
Total Households	2,633	22,544	59,271
# of Persons per HH	3.5	3.2	3
Average HH Income	\$41,174	\$50,472	\$51,714
Average House Value	\$117,724	\$131,396	\$132,404

* Demographic data derived from 2020 ACS - US Census

Adam Shekarabi
770 632 1774



COLDWELL BANKER
COMMERCIAL
BULLARD