

2170 FOLSOM STREET

FOR LEASE | HIGH-END FLEX BUILDING | MISSION DISTRICT

TCP
TOUCHSTONE
COMMERCIAL PARTNERS



ZACH HAUPERT

415.812.1219 | zhaupert@tcp.com

MICHAEL SANBERG

415.697.6088 | msanberg@tcp.com

WWW.TCPRE.COM

PROPERTY SUMMARY

ADDRESS

2170 Folsom Street, San Francisco, CA 94110

AVAILABLE SPACE

+/- 7,913 Square Feet

RENTAL RATE

\$52 / Year, Industrial Gross

AVAILABLE

Immediately

BUILDING ATTRIBUTES

- + Renovated Single Tenant Space
- + Prime Mission District Block
- + Excellent Neighborhood Character
- + High End Creative Space
- + Stand Alone Identity Building
- + One (1) Ground Floor Drive-In Roll-Up Door



SECOND FLOOR



SECOND FLOOR



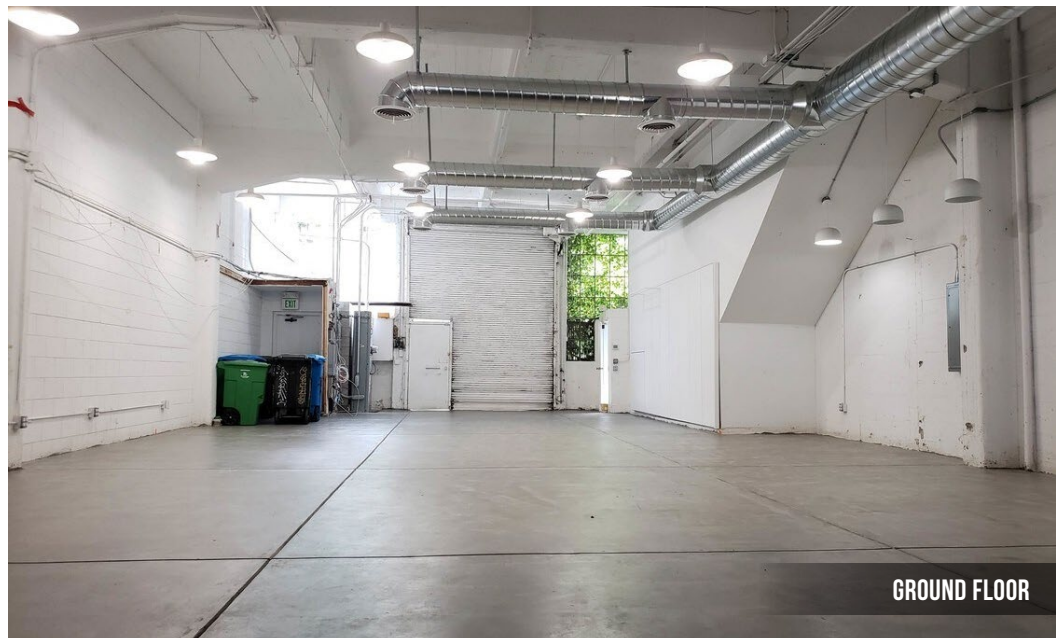
SECOND FLOOR



SECOND FLOOR



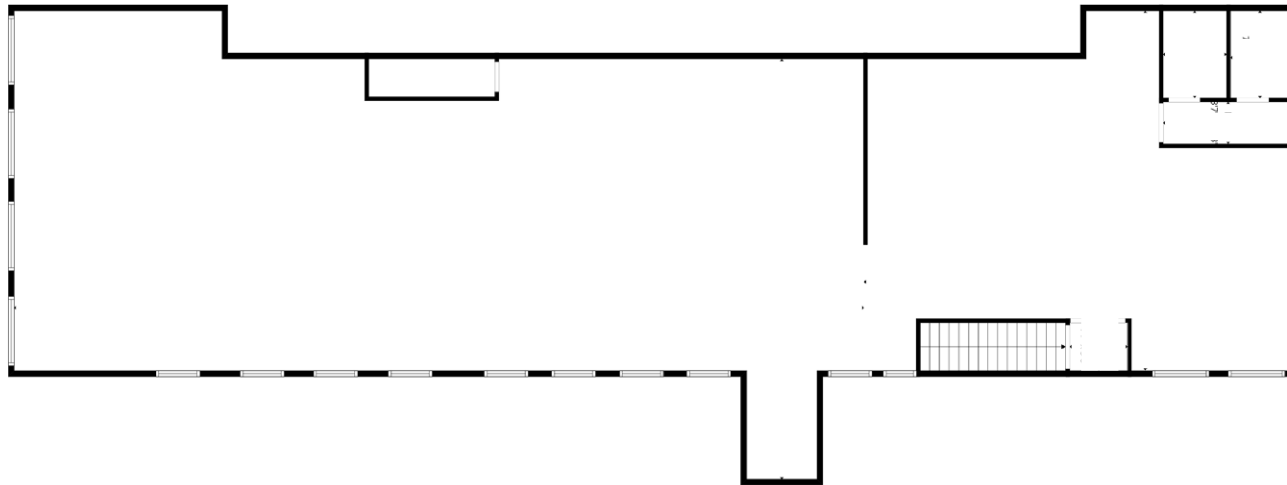
SECOND FLOOR



GROUND FLOOR

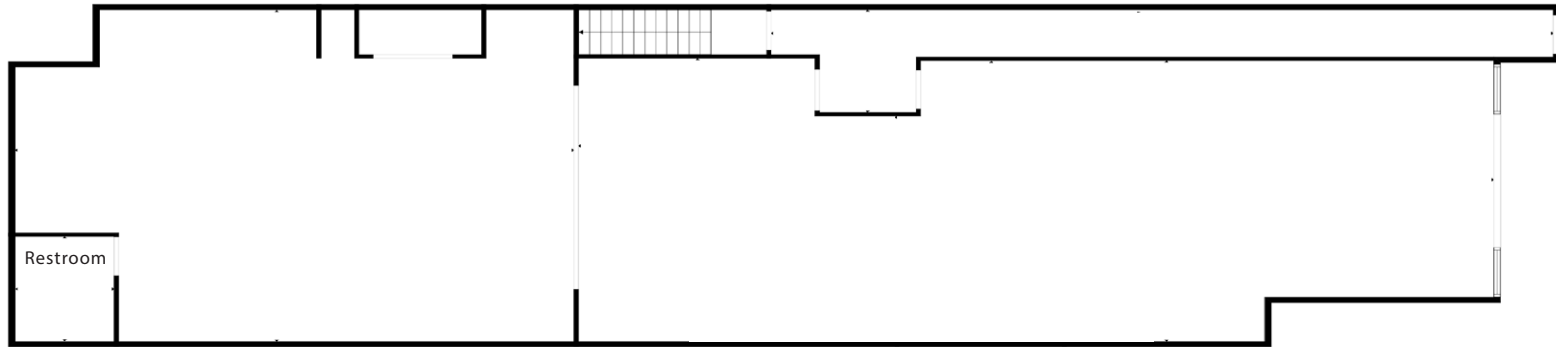
FLOOR PLAN
Second Floor

FOLSOM STREET



FLOOR PLAN

Ground Floor



FOLSOM STREET

LOCATION OVERVIEW

Desirable Mission District location, walkable to nearby amenities and to surrounding neighborhoods.



02 MIN to In Chan Kaajal Park
08 MIN to Franklin Square
10 MIN to 22nd St Muni



09 MIN to Soma
11 MIN to Oracle Park
23 MIN to Site

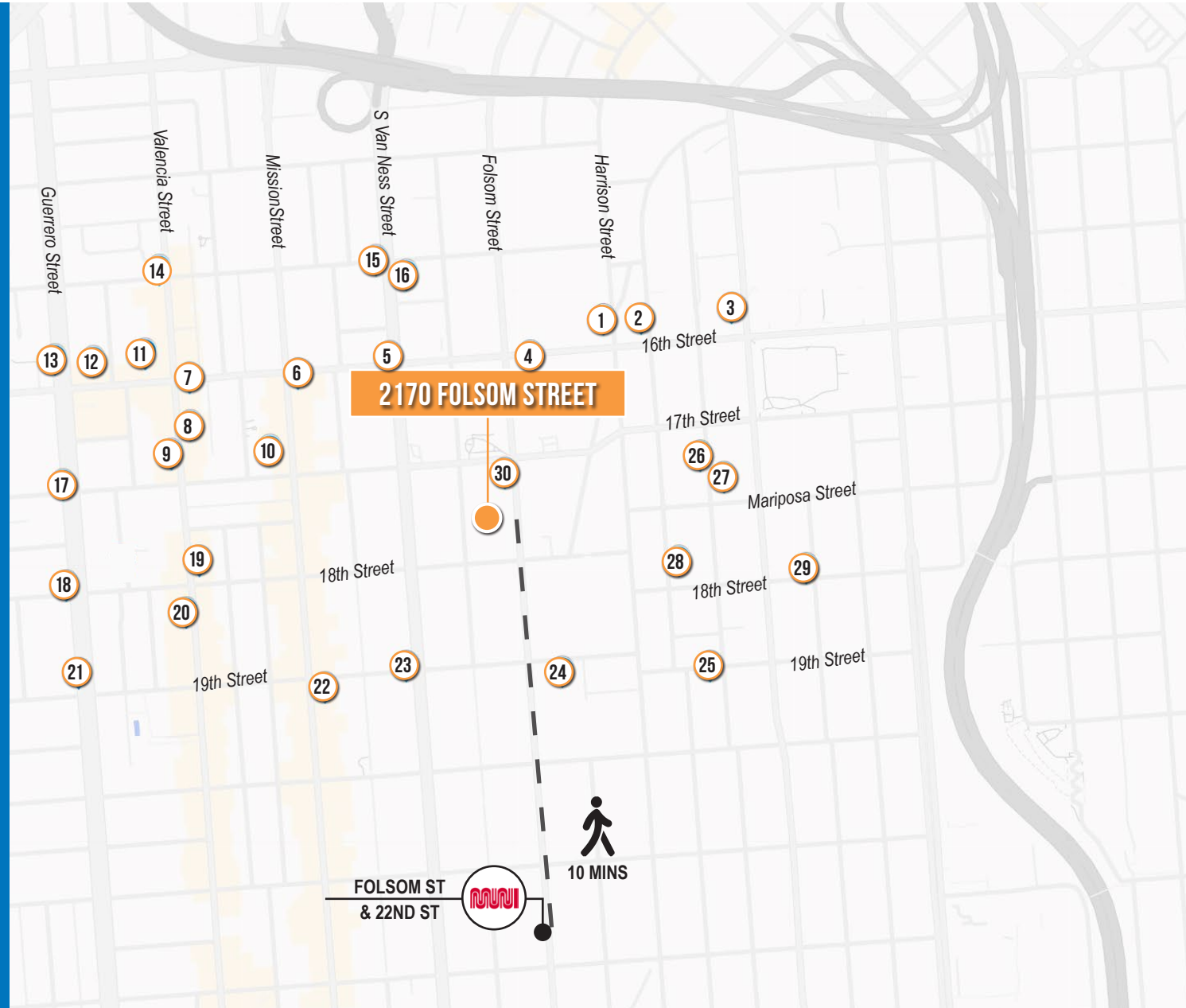


05 MIN to 101 On-Ramp
07 MIN to 280 On-Ramp
10 MIN to 80 On-Ramp



NEARBY AMENITIES

- 1 Jolene's Bar and Restaurant
- 2 Dandelion Chocolate 16th Street
- 3 Jade Cafe
- 4 Three Babes Bakeshop
- 5 Irma's Pampanga
- 6 Kitava
- 7 Panchita's Pupuseria
- 8 Stonemill Matcha
- 9 bao
- 10 Aaha Indian Cuisine
- 11 Picaro
- 12 ABV
- 13 Elixir
- 14 Little Star Pizza
- 15 Jilli SF
- 16 The Flying Pig
- 17 The 500 Club
- 18 Good Good Culture Club
- 19 Tartine Bakery
- 20 Taqueria El Buen Sabor
- 21 Dandelion Chocolate
- 22 Dolores Outpost
- 23 Teeth Bar SF
- 24 Bender's Bar & Grill
- 25 Southern Pacific Brewing
- 26 Farmhouse Kitchen Thai Cuisine
- 27 Z Space
- 28 Tartine Manufactory
- 29 Bobo's Bistro
- 30 Stable Cafe





STABLE CAFE



ABV



LITTLE STAR PIZZA



KITAVA



JILL SF

2170 FOLSOM STREET



Corp. Lic. 01112906
www.tcppe.com

ZACH HAUPERT DRE # 01822907
415.812.1219 | zhaupt@tcppe.com

MICHAEL SANBERG DRE # 01930041
415.697.6088 | msanberg@tcppe.com

This document has been prepared by Touchstone Commercial Partners for advertising and general information only. Touchstone Commercial Partners makes no guarantees, representations or warranties of any kind, expressed or implied, regarding the information including, but not limited to, warranties of content, accuracy and reliability. Any interested party should undertake their own inquiries as to the accuracy of the information. Touchstone Commercial Partners excludes unequivocally all inferred or implied terms, conditions and warranties arising out of this document and excludes all liability for loss and damages arising there from. This publication is the copyrighted property of Touchstone Commercial Partners and/or its licensor(s). ©2026. All rights reserved.