

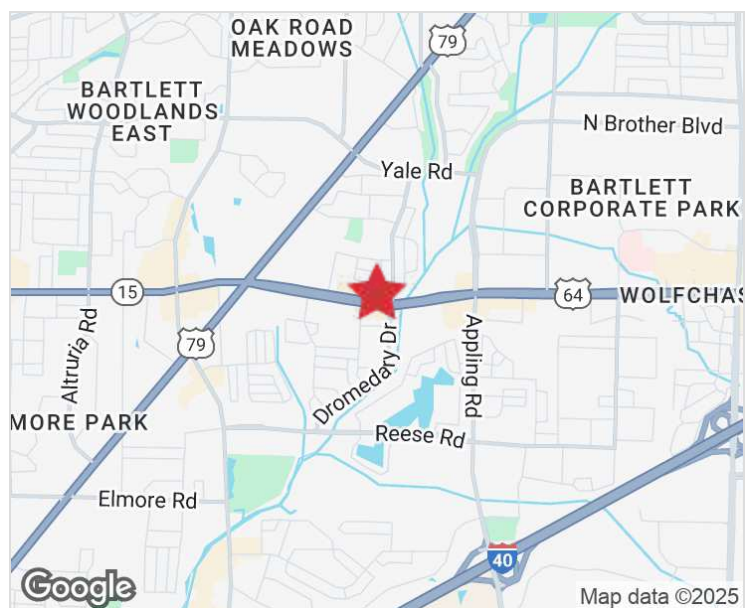


## Countryside Center

7161-7221 Highway 64, Bartlett, Tennessee, 38133

### Property Features

- Retail space for lease up to 3,010 SF
- Outparcel available with prime Highway 64 frontage
- Recently upgraded exterior LED lighting
- Ideal for retail, medical, office, or service-based users
- Outstanding visibility with over 34,600 vehicles passing daily
- Anchored by Dollar General and positioned within the high-traffic Wolfchase Galleria retail corridor near Bartlett, TN



### Demographics

	1 Mile	3 Miles	5 Miles
<b>Total Households:</b>	3,013	26,448	62,317
<b>Total Population:</b>	8,344	66,917	162,602
<b>Average HH Income:</b>	\$77,419	\$87,740	\$93,797

NO WARRANTY OR REPRESENTATION, EXPRESS OR IMPLIED, IS MADE AS TO THE ACCURACY OF THE INFORMATION CONTAINED HEREIN, AND THE SAME IS SUBMITTED SUBJECT TO ERRORS, OMISSIONS, CHANGE OF PRICE, RENTAL OR OTHER CONDITIONS, PRIOR SALE, LEASE OR FINANCING, OR WITHDRAWAL WITHOUT NOTICE, AND OF ANY SPECIAL LISTING CONDITIONS IMPOSED BY OUR PRINCIPALS NO WARRANTIES OR REPRESENTATIONS ARE MADE AS TO THE CONDITION OF THE PROPERTY OR ANY HAZARDS CONTAINED THEREIN ARE ANY TO BE IMPLIED.

For more information:

**James McCraw, CCIM**

901 590 9997 • [jmccraw@saigcompany.com](mailto:jmccraw@saigcompany.com)

**Daniel McPhail, SIOR**

901 526 3100 • [dmcphail@saigcompany.com](mailto:dmcphail@saigcompany.com)

NAI Saig Company

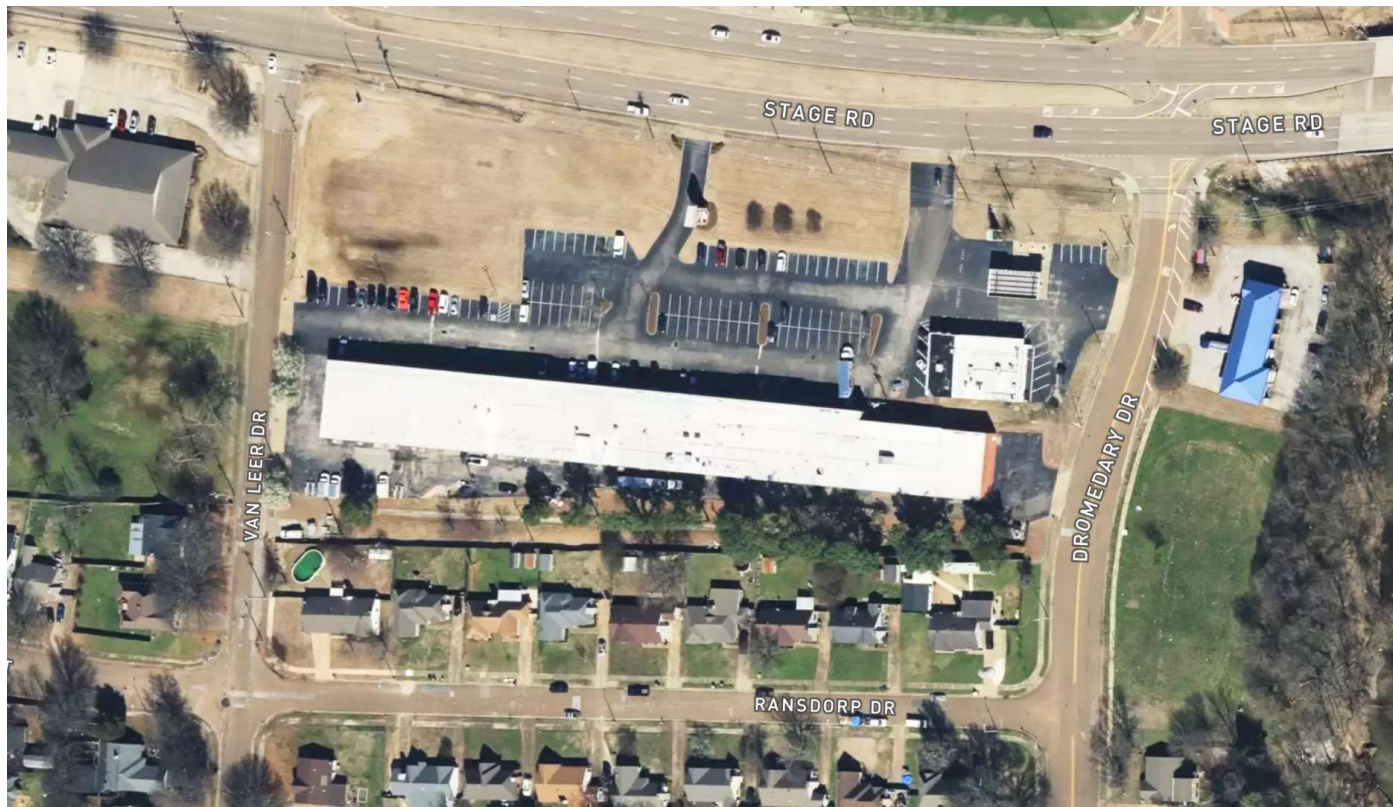
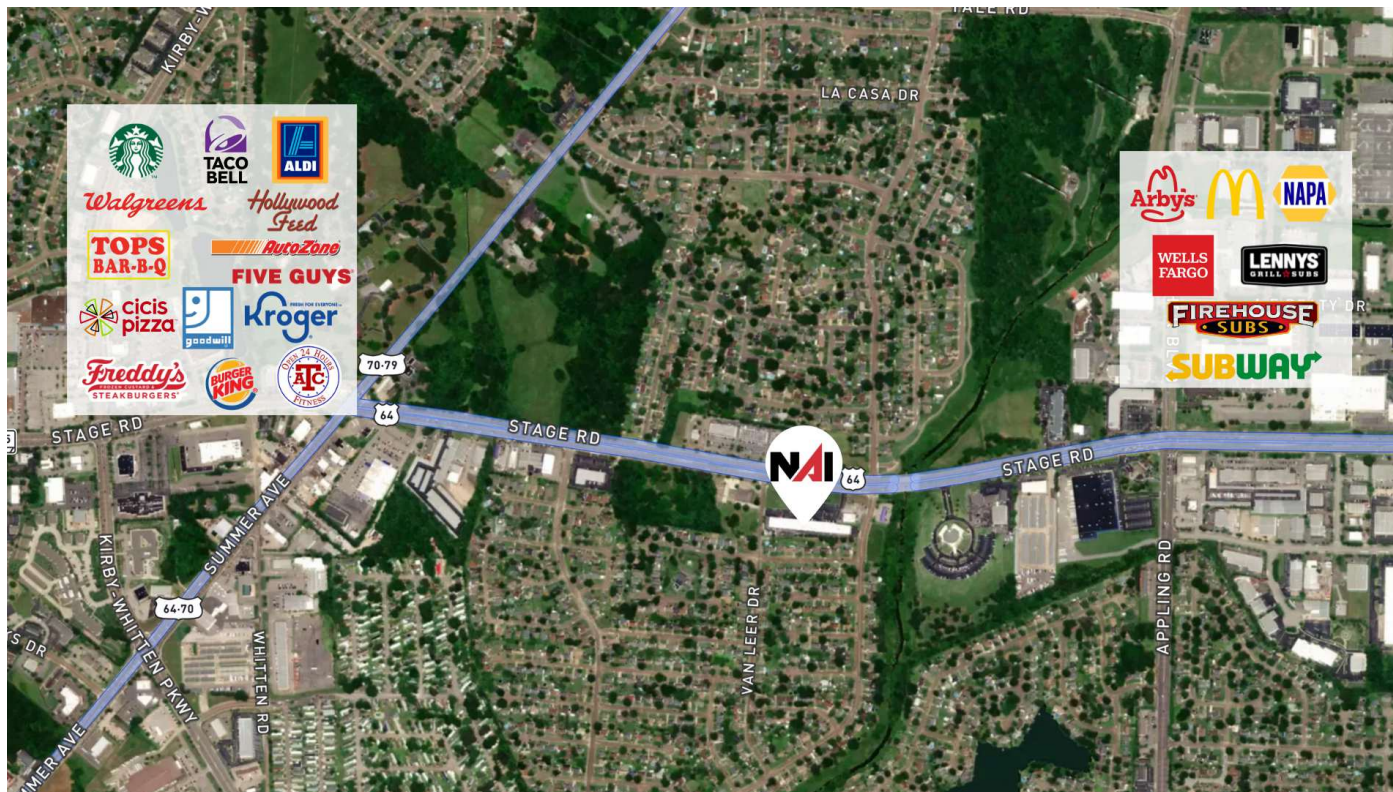
6263 Poplar Avenue Suite 150, Memphis, TN 38119

901 526 3100

[saigcompany.com](http://saigcompany.com)

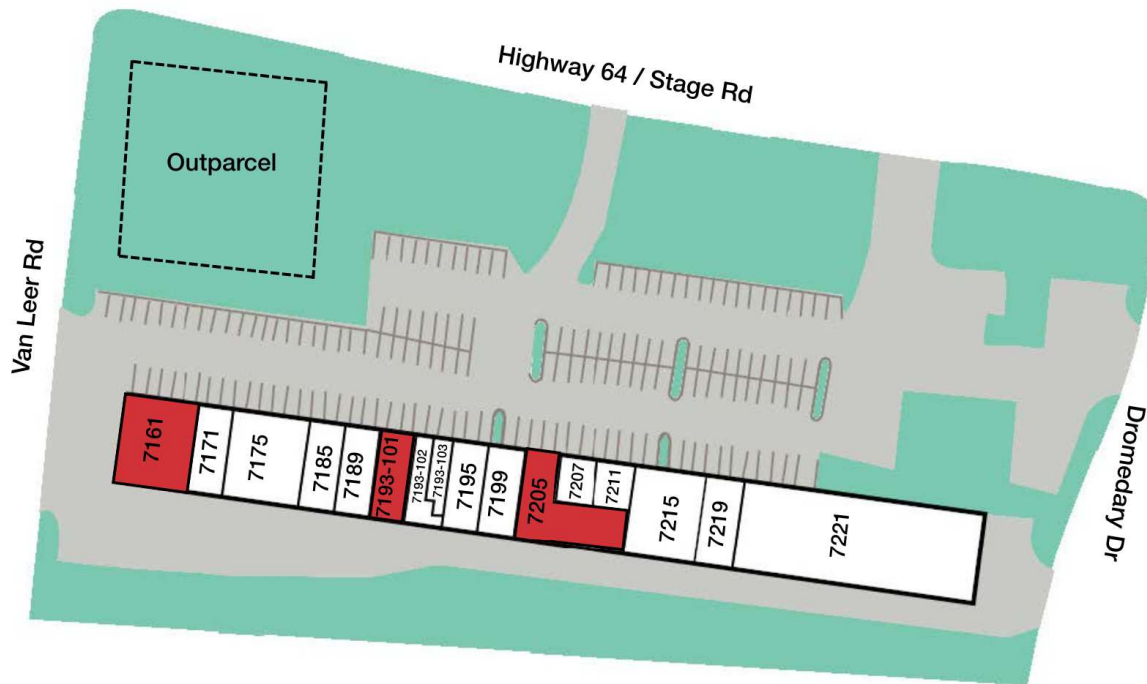
For Lease

Retail



For Lease

Retail



Suite #	Tenant	SF
7161	Available	3,003
7171	Budget Rent-A-Car	1,505
5071	TNL Nail Supplies	3,015
5079	Gracie's Kitchen	1,460
5107	Math Made Simple	1,470
7193-101	Available	1,555
7193-102	Honey Bee Salon	928
7193-103	MetroPCS	547

Suite #	Tenant	SF
7195	Sanders Catering	1,535
7199	Wing Guru	1,505
7205	Available	3,010
7207	Son's Nails	753
7211	Mike's Aleterations	753
7215	Vanity Salon	2,995
7219	Sharon Stutts	1,505
7221	Dollar General	9,963

## Availabilites

- Suite 7161: 3,003 SF
- Suite 7193 - 101: 1,555 SF
- Suite 7205: 3,010 SF