



OFFERING SUMMARY

Available SF From:	500 - 2,570 SF
Building Size:	36,861 SF

PROPERTY HIGHLIGHTS

- Master planned business park
- Grade level overhead doors
- Easy access 24/7
- Immediate occupancy
- Strategically located just west of I-95 with convenient access to Yamato Road and Glades Road
- In proximity to restaurants, shopping, banks, and public transportation
- Estimated operating expenses/ CAM \$6.70 PSF (2024)
- Zoned M-3, City of Boca Raton
- N-4 and N-9 will not be available until April 2025

CURRENT AVAILABLE SPACES	LEASE RATE	SPACE SIZE
S-2	\$1,963 per month	760 SF
N-3	\$1,292 per month	500 SF
N-4	\$1,602 per month	620 SF
N-9	\$1,602 per month	620 SF
W-10	\$6,639 per month	2,570 SF

For more information:

Brian Batchelder

561.430.2302 | Bbatchelder@Bergercommercial.Com
 bergercommercial.com

Keith R. Graves, CCIM, SIOR

954.652.2031 | Kgraves@Bergercommercial.Com

Jonathan Thiel

954.652.2020 | Jthiel@Bergercommercial.Com





For more information:

Brian Batchelder

561.430.2302 | Bbatchelder@Bergercommercial.com
bergercommercial.com

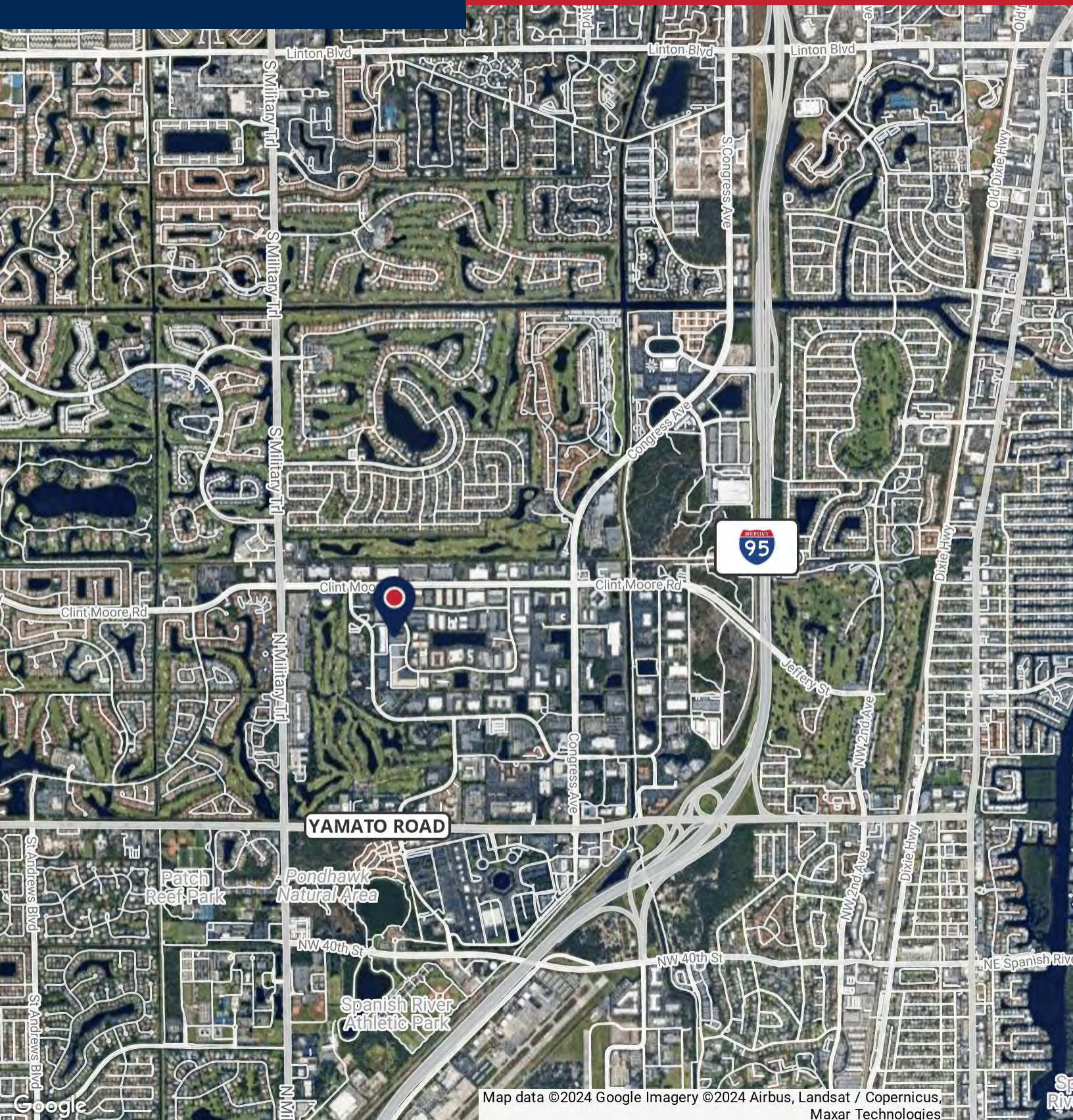
Keith R. Graves, CCIM, SIOR

954.652.2031 | Kgraves@Bergercommercial.com

Jonathan Thiel

954.652.2020 | Jthiel@Bergercommercial.com





For more information:

Brian Batchelder

561.430.2302 | bbatchelder@Bergercommercial.com
bergercommercial.com

Keith R. Graves, CCIM, SIOR

954.652.2031 | kgraves@Bergercommercial.com

Jonathan Thiel

954.652.2020 | jthiel@Bergercommercial.com

