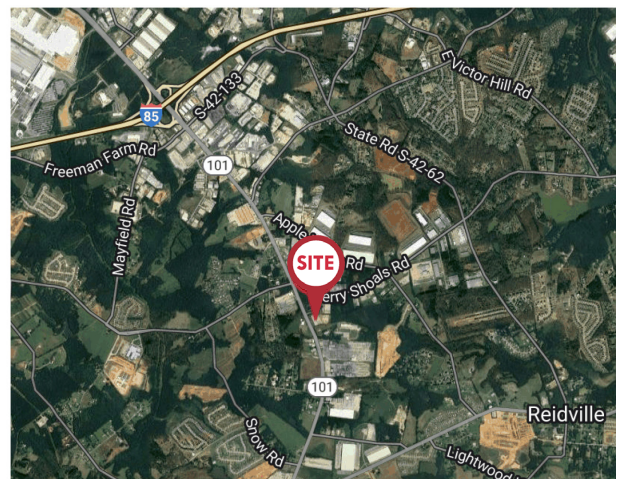


\$12.00 SF/YR (NNN)



OFFICE/FLEX SPACE | ±6,000 SF

- Endcap suite available in Lakeside Business Center
- Suite J is currently 100% office space
- Landlord is willing to create a warehouse area up to a 50/50 ratio
- Shared dock-high truck loading access
- Exterior pylon signage available with Highway 101 exposure
- Ample parking
- Foreign Trade Zone status
- Located ±1 mile from I-85 and BMW



For more information:

John Staunton, SIOR

864 678 5990 • johnstaunton@naief.com

Hunter Garrett, CCIM, SIOR

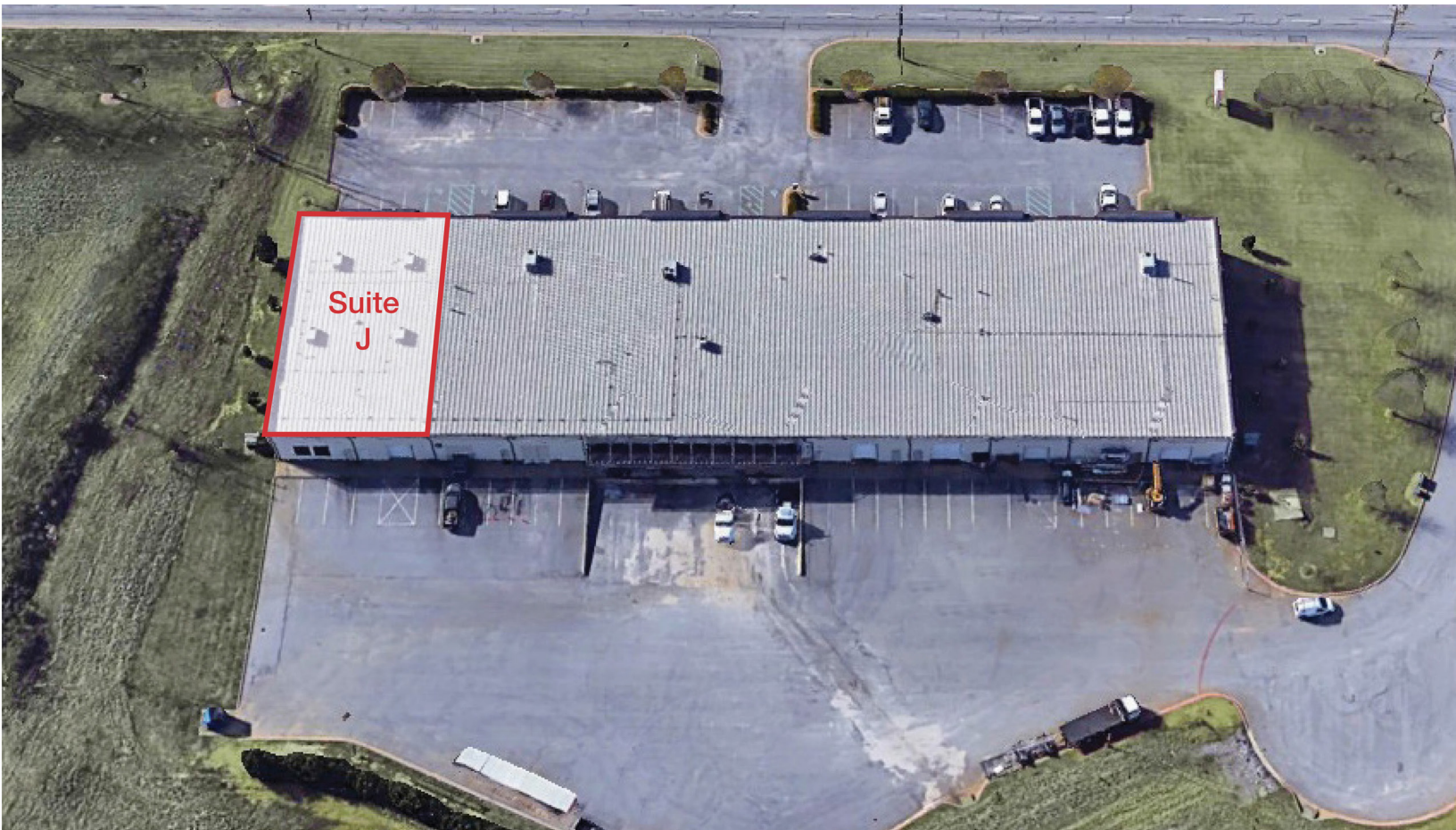
864 678 5934 • hgarrett@naief.com

Josh Kenyon

704 964 2181 • jkenyon@naief.com

For Lease - Suite J

2355 S. Hwy 101 | Greer, SC 29651

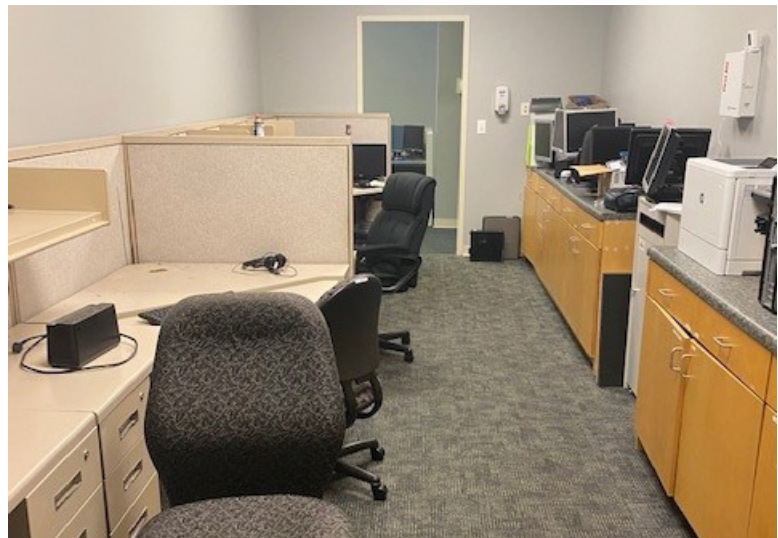


NO WARRANTY OR REPRESENTATION, EXPRESS OR IMPLIED, IS MADE AS TO THE ACCURACY OF THE INFORMATION CONTAINED HEREIN, AND THE SAME IS SUBMITTED SUBJECT TO ERRORS, OMISSIONS, CHANGE OF PRICE, RENTAL OR OTHER CONDITIONS, PRIOR SALE, LEASE OR FINANCING, OR WITHDRAWAL WITHOUT NOTICE, AND OF ANY SPECIAL LISTING CONDITIONS IMPOSED BY OUR PRINCIPALS NO WARRANTIES OR REPRESENTATIONS ARE MADE AS TO THE CONDITION OF THE PROPERTY OR ANY HAZARDS CONTAINED THEREIN ARE ANY TO BE IMPLIED.

101 E Washington Street Ste 400
Greenville, South Carolina 29601

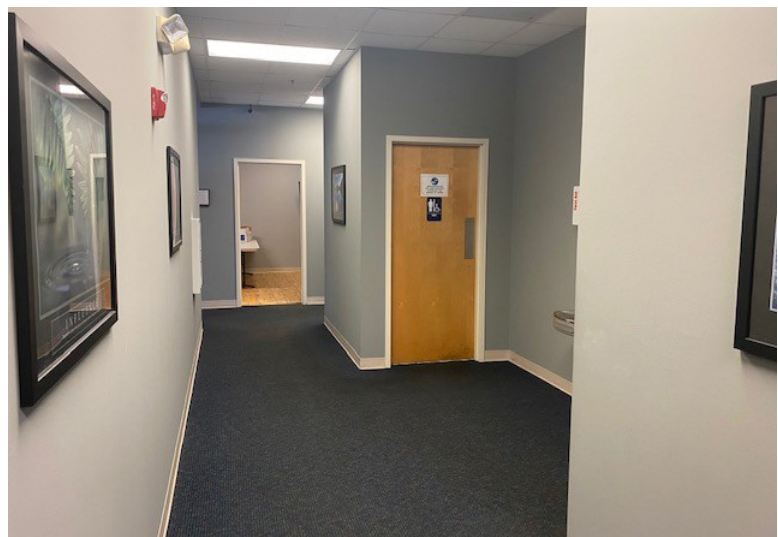
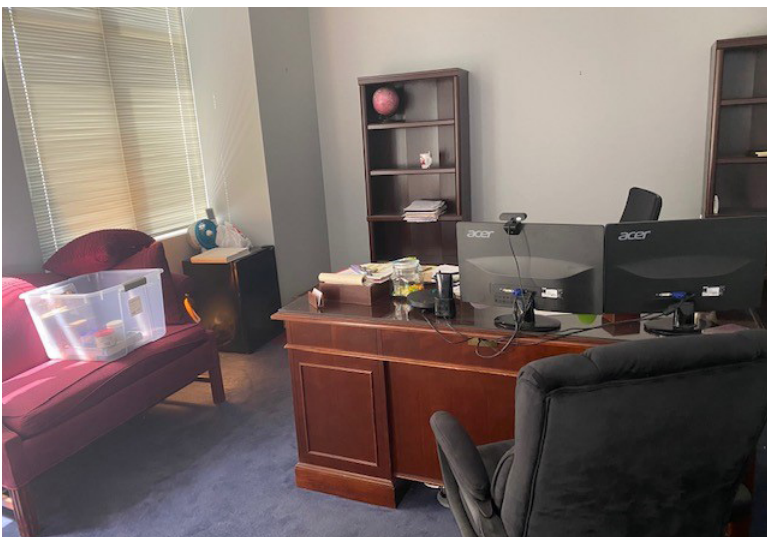
864 232 9040

naiearlefurman.com



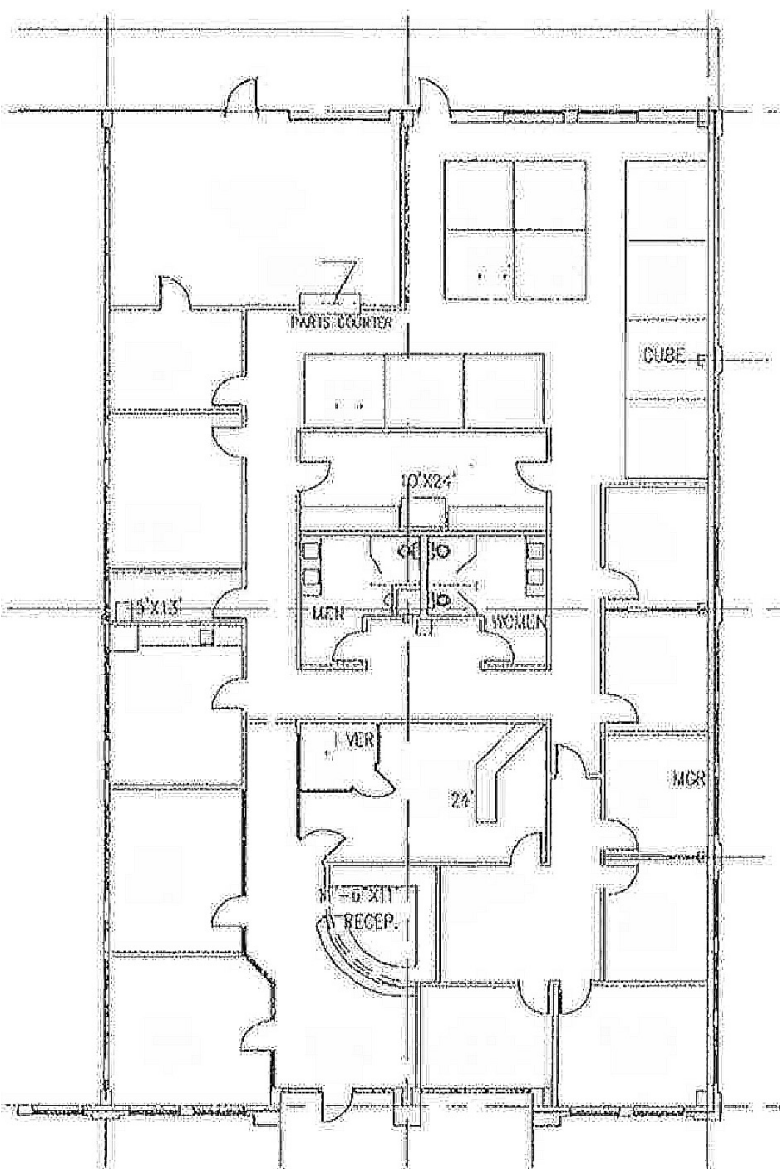
NO WARRANTY OR REPRESENTATION, EXPRESS OR IMPLIED, IS MADE AS TO THE ACCURACY OF THE INFORMATION CONTAINED HEREIN, AND THE SAME IS SUBMITTED SUBJECT TO ERRORS, OMISSIONS, CHANGE OF PRICE, RENTAL OR OTHER CONDITIONS, PRIOR SALE, LEASE OR FINANCING, OR WITHDRAWAL WITHOUT NOTICE, AND OF ANY SPECIAL LISTING CONDITIONS IMPOSED BY OUR PRINCIPALS NO WARRANTIES OR REPRESENTATIONS ARE MADE AS TO THE CONDITION OF THE PROPERTY OR ANY HAZARDS CONTAINED THEREIN ARE ANY TO BE IMPLIED.

101 E Washington Street Ste 400
Greenville, South Carolina 29601
864 232 9040
naiearlefurman.com

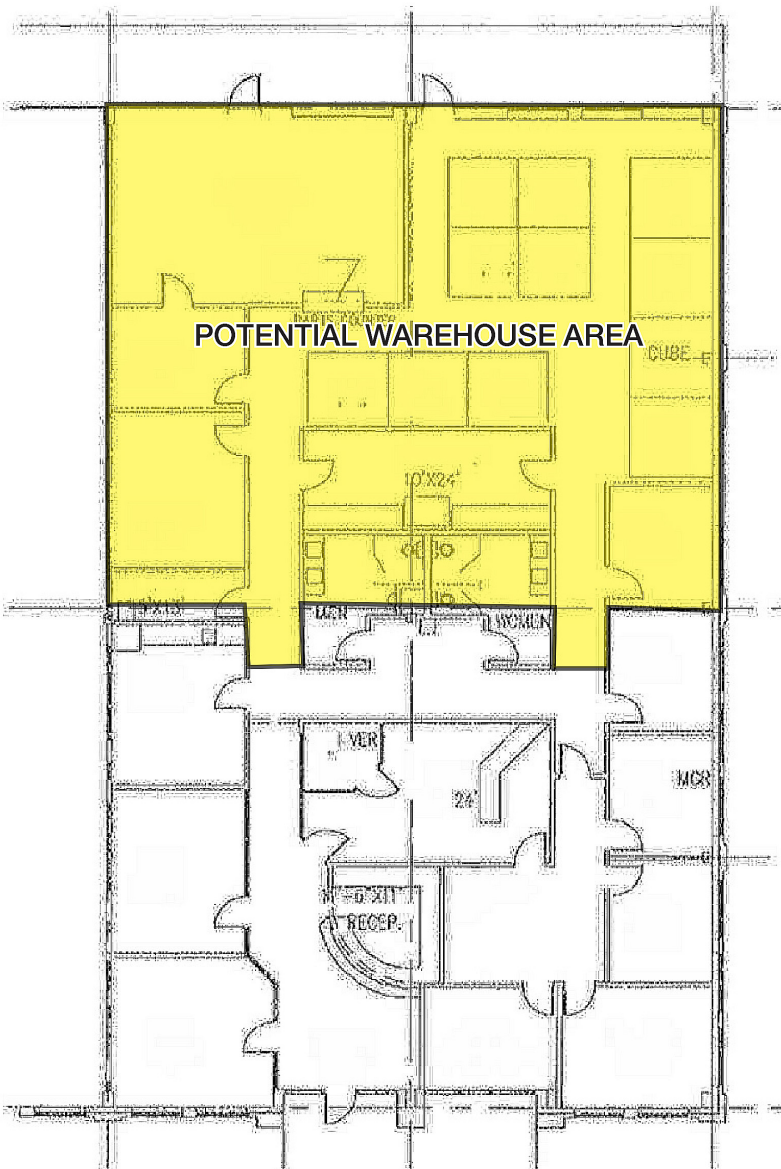


NO WARRANTY OR REPRESENTATION, EXPRESS OR IMPLIED, IS MADE AS TO THE ACCURACY OF THE INFORMATION CONTAINED HEREIN, AND THE SAME IS SUBMITTED SUBJECT TO ERRORS, OMISSIONS, CHANGE OF PRICE, RENTAL OR OTHER CONDITIONS, PRIOR SALE, LEASE OR FINANCING, OR WITHDRAWAL WITHOUT NOTICE, AND OF ANY SPECIAL LISTING CONDITIONS IMPOSED BY OUR PRINCIPALS NO WARRANTIES OR REPRESENTATIONS ARE MADE AS TO THE CONDITION OF THE PROPERTY OR ANY HAZARDS CONTAINED THEREIN ARE ANY TO BE IMPLIED.

101 E Washington Street Ste 400
Greenville, South Carolina 29601
864 232 9040
naiearlefurman.com



CURRENT 100% OFFICE FLOOR PLAN



POTENTIAL FLOOR PLAN WITH WAREHOUSE AREA