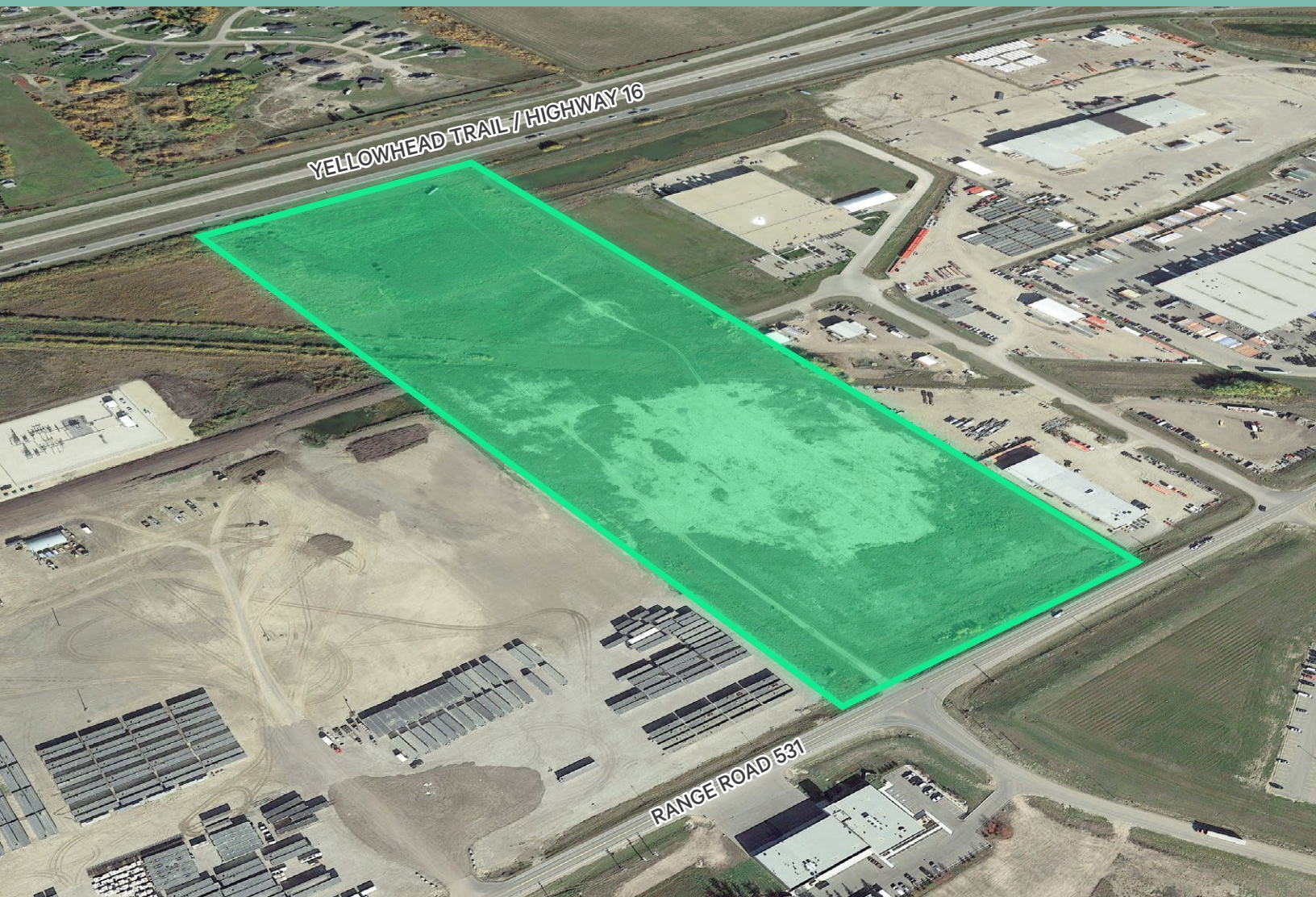


# Manitoulin Industrial Land

26324 TWP Road 531A  
Acheson, Alberta  
[www.cbre.ca](http://www.cbre.ca)

17.0 Acres Ready for Immediate Development



# Manitoulin Industrial Land

26324 TWP Road 531A | Acheson, Alberta

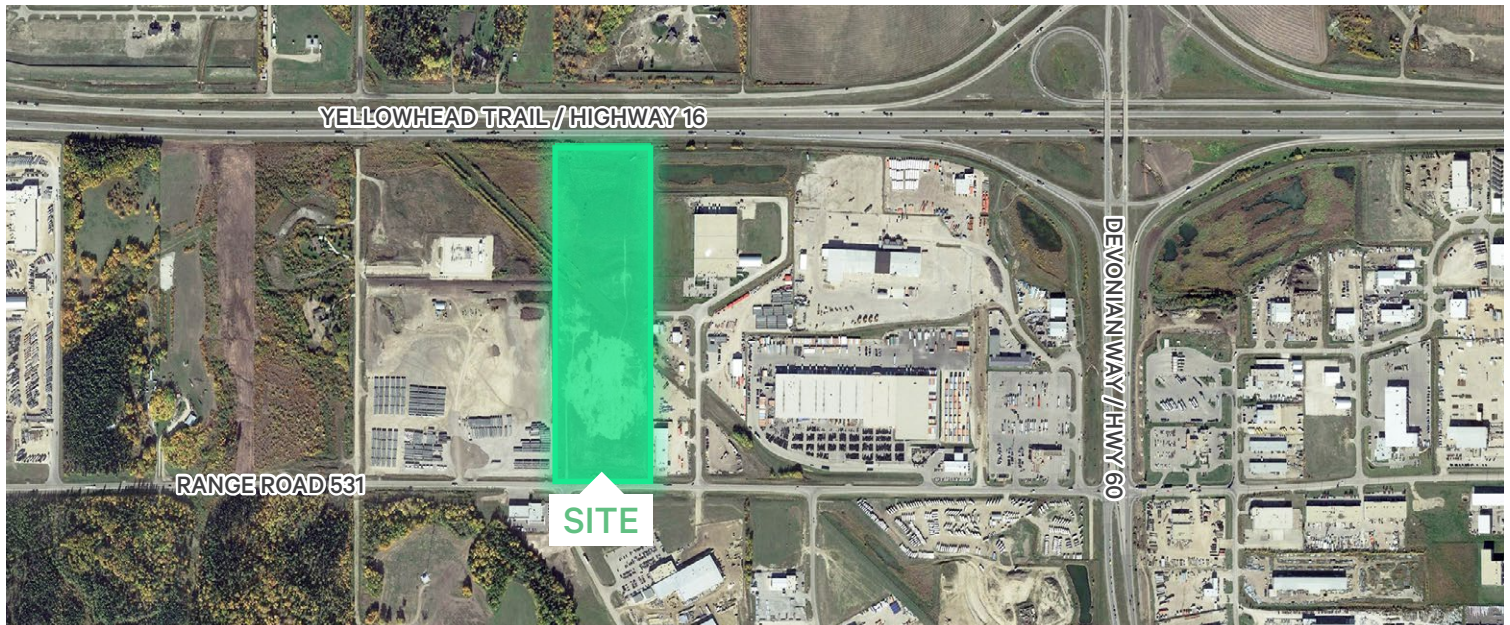
# For Sale

# The Opportunity

## 34.33 Acres Total

Located in the Acheson Industrial area with direct exposure to Highway 16. The south portion of the site is stripped, leveled, compacted, and ready to build. The land is zoned IB - Business Industrial Zoning and has full services to property line.

Legal Address	Plan 3632RS; Lot 2
Zoning	IB - Business Industrial
Site Size	34.33 acres total ±17.00 acres are stripped, leveled, compacted, and ready to build
Site Services	Storm and sanitary sewer at lot line Water service in road that intersects lot along east property line and TWP Road 531A
Sale Price	\$6,750,000
Taxes (2024)	\$69,974.47
Available	Immediately



## Contact Us

### Kevin Hughes

Senior Vice President  
+1 780 917 4634  
kevin.hughes@cbre.com

### Gregg Maimann

Senior Vice President  
+1 780 917 4632  
gregg.maimann@cbre.com

### Trevor Schmidt

Vice President  
+1 780 917 4641  
trevor.schmidt@cbre.com

### Jordan Adams

Vice President  
+1 780 917 4645  
jordan.adams@cbre.com

### Braylon Klemchuk

Vice President  
+1 780 229 4687  
braylon.klemchuk@cbre.com

### Jay Olmstead

Sales Representative  
+1 780 554 1191  
jay.olmstead@cbre.com

### John Allan McKay

Associate  
+1 780 915 5020  
johnallan.mckay@cbre.com

### Lucas Neumeyer

Associate  
+1 780 850 2267  
lucas.neumeyer@cbre.com

\*(Sub) Tenant / Purchaser is responsible to confirm the electrical service to the premises / building and ensure it is sufficient for their intended use.

This disclaimer shall apply to CBRE Limited, Real Estate Brokerage, and to all other divisions of the Corporation; to include all employees and independent contractors ("CBRE"). The information set out herein, including, without limitation, any projections, images, opinions, assumptions and estimates obtained from third parties (the "Information") has not been verified by CBRE, and CBRE does not represent, warrant or guarantee the accuracy, correctness and completeness of the Information. CBRE does not accept or assume any responsibility or liability, direct or consequential, for the Information or the recipient's reliance upon the Information. The recipient of the Information should take such steps as the recipient may deem necessary to verify the Information prior to placing any reliance upon the Information. The Information may change and any property described in the Information may be withdrawn from the market at any time without notice or obligation to the recipient from CBRE. CBRE and the CBRE logo are the service marks of CBRE Limited and/or its affiliated or related companies in other countries. All other marks displayed on this document are the property of their respective owners. All Rights Reserved.