



METRO CENTER ATRIUM

1776 EASTCHESTER ROAD, BRONX, NY

PRIME MEDICAL / OFFICE SPACE FOR LEASE

SPACE AVAILABLE:

First Floor Office: 12,000 SF
Second Floor Office: 17,623 SF*
Second Floor Office: 4,290 SF
Divisible

PRICE:

Upon Request

AVAILABLE:

Immediate

PROPERTY FEATURES:

- Class A Office Building
- Move-in Condition
- Furniture Available
- 24/7 Security
- On-site Property Management
- Supplement A/C for IT
- Onsite Covered Parking
- Future Metro North Station
- MTA Bus Service BX 8, 14, 21, 24, 40 & 42
- Shuttle Bus Service

FOR LEASING INFORMATION:

Simone Development

Josh Gopan

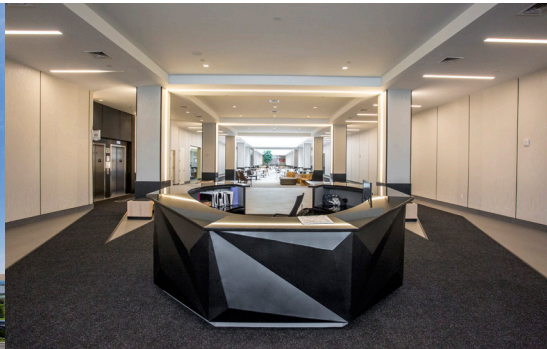
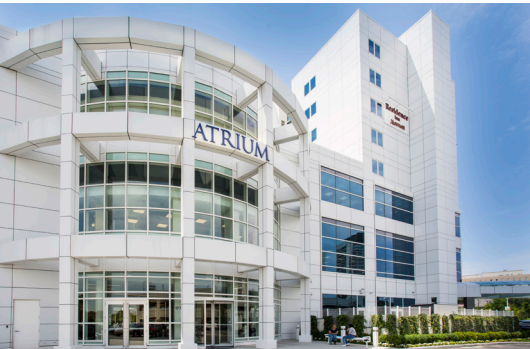
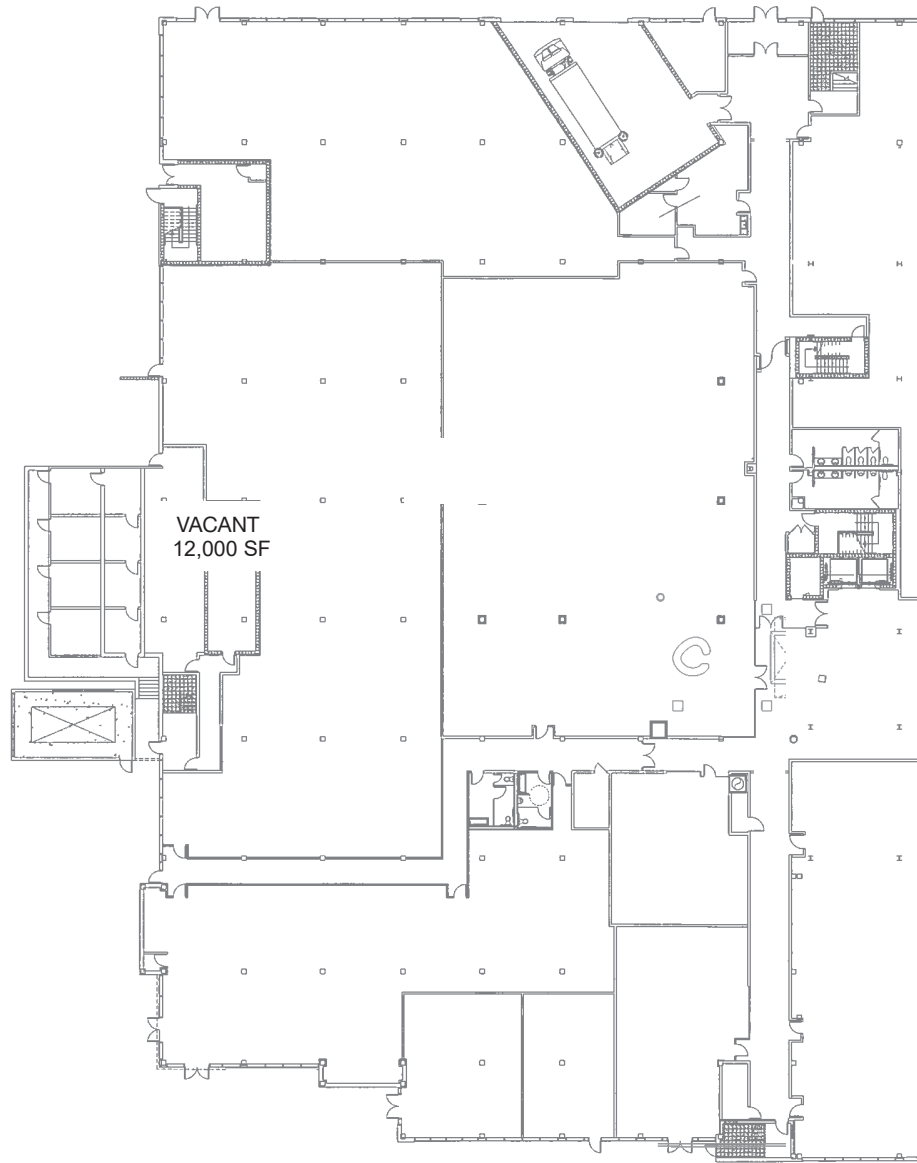
jgopan@simdev.com | 718-215-3000 x113

Jeremy Schwartz

jschwartz@simdev.com | 718-215-3000 x296

FLOOR PLANS

FLOOR 1
AVAILABLE SPACE: 12,000 SF



FOR LEASING INFORMATION:

Simone Development

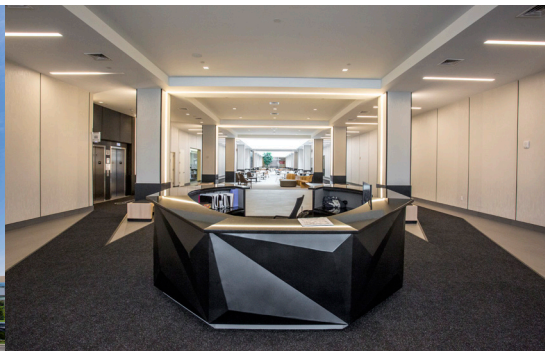
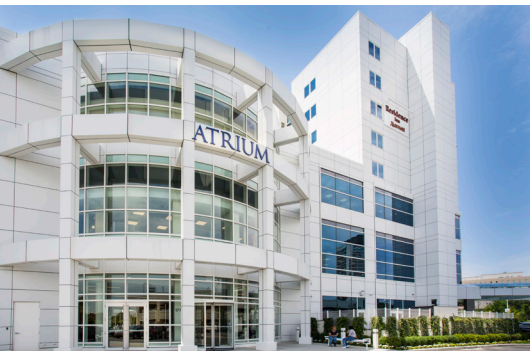
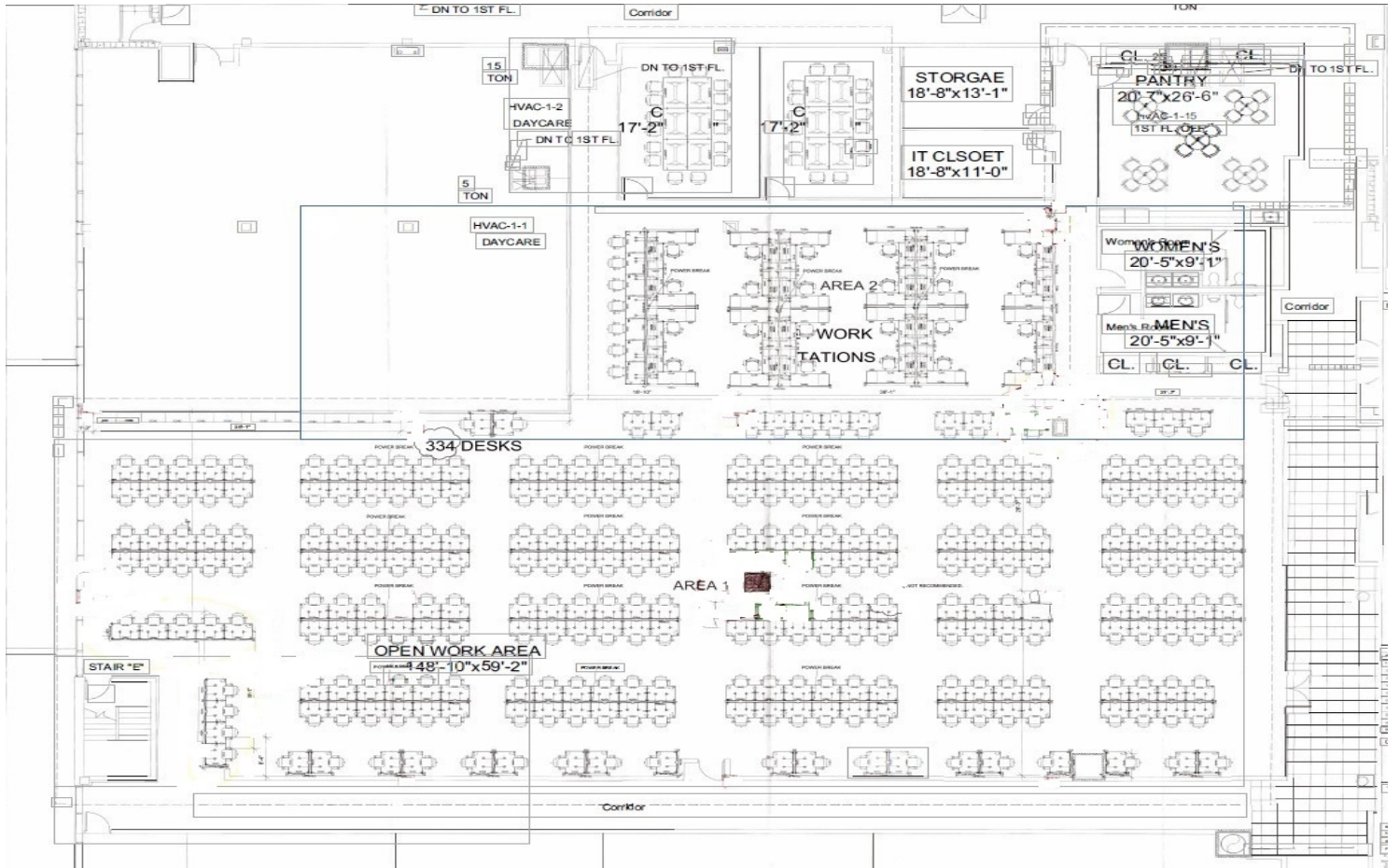
Josh Gopan
jgopan@simdev.com | 718-215-3000 x113

Jeremy Schwartz
jschwartz@simdev.com | 718-215-3000 x296

SIMONE[®]
DEVELOPMENT COMPANIES

FLOOR PLANS

FLOOR 2
AVAILABLE SPACE: 17,623 SF



FOR LEASING INFORMATION:

Simone Development

Josh Gopan
jgopan@simdev.com | 718-215-3000 x113

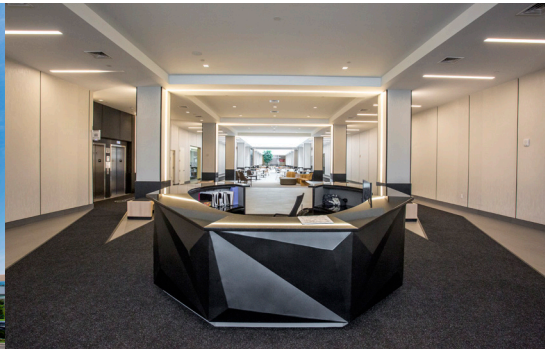
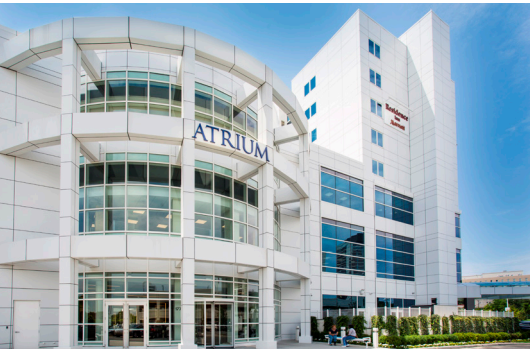
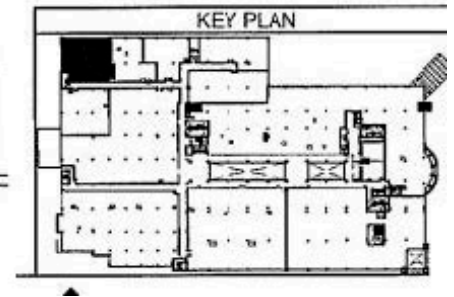
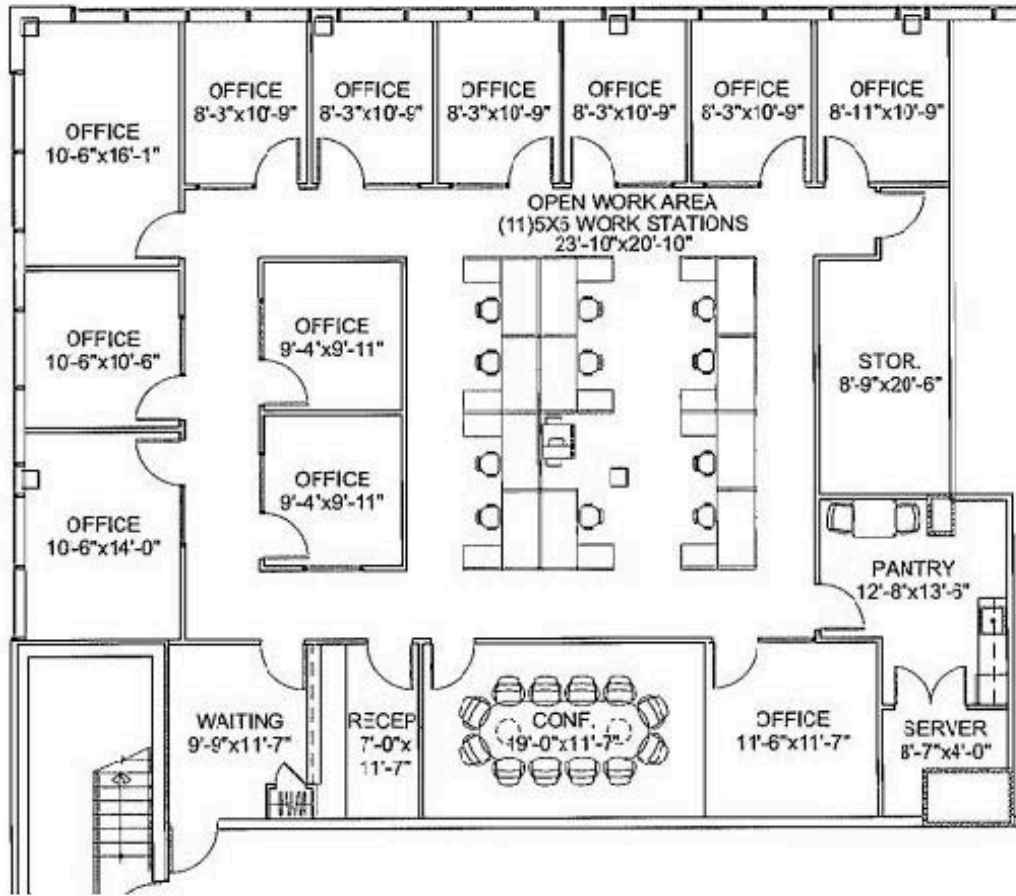
Jeremy Schwartz
jschwartz@simdev.com | 718-215-3000 x296

SIMONE[®]
DEVELOPMENT COMPANIES

FLOOR PLAN

FLOOR 2

AVAILABLE SPACE: 4,290 SF



FOR LEASING INFORMATION:

Simone Development

Josh Gopan

jgopan@simdev.com | 718-215-3000 x113

Jeremy Schwartz

jschwartz@simdev.com | 718-215-3000 x296

SIMONE[®]
DEVELOPMENT COMPANIES