



**14,225 SF AVAILABLE FOR LEASE ON FIRST FLOOR**

# 600 Eagleview Boulevard

*Exton, PA 19341*

## PROPERTY HIGHLIGHTS

- Conveniently located near numerous local amenities which include:
  - Restaurant Row – Featuring AI fresco dining
  - Fitness center
  - Daycare
  - Walking trails
  - Farmers market
- Parking: 4.80/1,000 SF ratio
- Easy access to Route 113 and Pottstown Pike



*For information, please contact:*

**Jim Dugan**

*Executive Managing Director*  
t 610-879-4513  
[james.dugan@nmrk.com](mailto:james.dugan@nmrk.com)

**Jeff Mack**

*Executive Managing Director*  
t 610-755-6960  
[jeff.mack@nmrk.com](mailto:jeff.mack@nmrk.com)

**Tucker McBride**

*Associate*  
t 610-755-6921  
[tucker.mcbride@nmrk.com](mailto:tucker.mcbride@nmrk.com)

610 Freedom Business Center Drive, Suite 310  
King of Prussia, PA 19406  
t 610-265-0600  
[nmrk.com](http://nmrk.com)

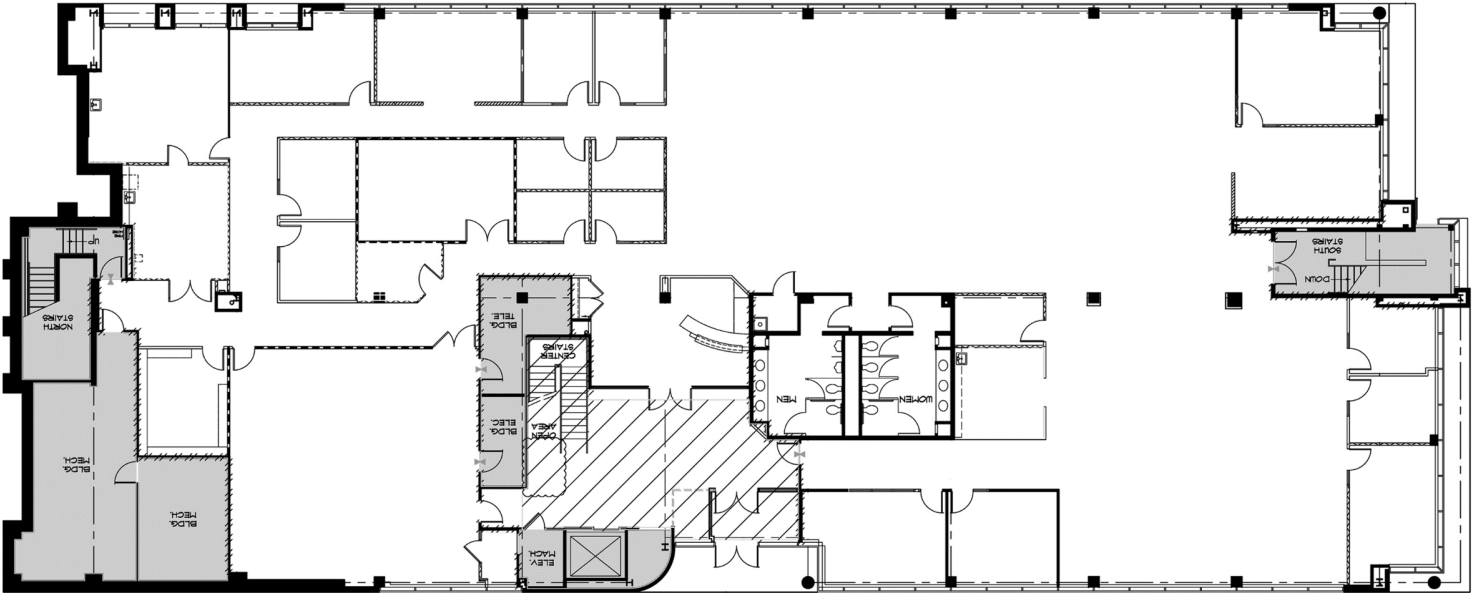
Licensed in Pennsylvania as Newmark Real Estate

**NEWMARK**

The information contained herein has been obtained from sources deemed reliable but has not been verified and no guarantee, warranty or representation, either express or implied, is made with respect to such information. Terms of sale or lease and availability are subject to change or withdrawal without notice.

14,225 SF AVAILABLE FOR LEASE ON FIRST FLOOR

## 600 Eagleview Boulevard



FIRST FLOOR AVAILABLE SPACE

14,225 SF AVAILABLE FOR LEASE ON FIRST FLOOR

## 600 Eagleview Boulevard



SUITE ENTRANCE



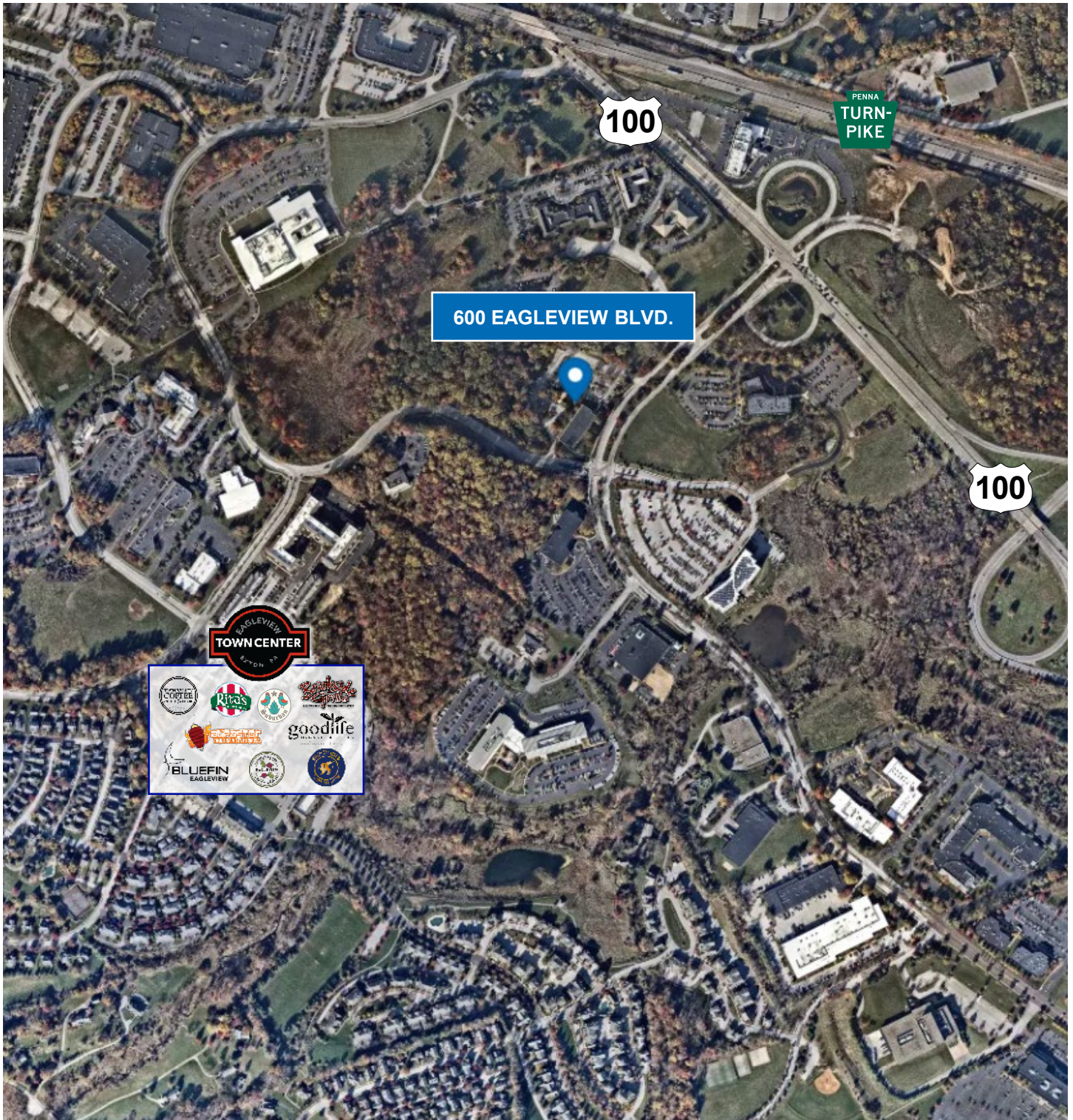
FULLY EQUIPPED BOARD ROOM



ABUNDANT NATURAL LIGHT DUE TO WINDOW LINE

14,225 SF AVAILABLE FOR LEASE ON FIRST FLOOR

## 600 Eagleview Boulevard



CLOSE PROXIMITY TO NUMEROUS AMENITIES AND ROADWAYS