

AVAILABLE SPACES FOR LEASE

110 SF to 5,900 SF
Retail & Restaurant Space Available

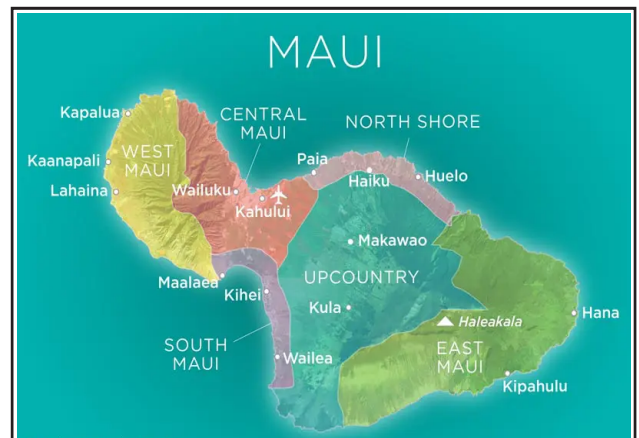


RENTAL RATES

- Base Rent: Negotiable
- Advertising/Marketing: \$75/mo. (kiosks)
\$0.08 PSF (restaurant)
- Flexible terms available
- Est CAM (2025): \$3.46 /SF per month

PROPERTY FEATURES

- The center is comprised of over 50 retail shops & 14 restaurants/bars in the growing town of Kihei
- Tourist shopping destination
- On site storage facility (additional fee)
- On-site security team
- Great South Maui location in Kihei - popular area for locals and tourists



DEMOGRAPHICS

Maui Island Population (2022 census):	154,100
South Kihei Population	27,921
Maui Households	57,355
Visitor arrival (2022)	2, 910,782

FOR MORE INFORMATION, CONTACT:

EVAN J. KETTER (B)
RB - 24112

OFFICE: (808) 879-5000

DIRECT: (808) 666-5398

CELL: (808) 421-9118

E-MAIL: EKETTER@MWGROUP.COM

The information contained herein comes from sources deemed to be reliable; however, no representation or warranty is made by MW Commercial Realty, Inc. and said information is subject to change without notice. No subagency offered.



**MW Commercial
Realty, Inc.**
Real Estate Brokerage

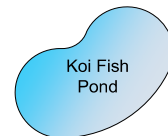
1280 S. Kihei Road | Ste. 224 | Kihei, HI 96753
P: (808) 879-5000 | F: (808) 879-3999 | Corp. Lic. # RB-16265
www.mwcommercialrealty.com

KIHEI KALAMA VILLAGE

PAVILION MAP

1941 S. Kihei Rd., Kihei, HI 96753
TMK: (2) 3-9-003-007

I6	H4	G4	F4	E6
I5				
I4	H3	G3	F3	E2, 3, 4
I3	H2	G2	F2	
I2				
I1	H1	G1	F1	E1



D10	C6	B6	A10
D9			A9
D8	C5	B5	A8
D7	C4	B4 153 SF	A7
D6			A6
D5	C3 153 SF	B3	A5
D4			A4
D3 180 SF	C2	B2	A3
D2			A2
D1	C1	B1 110 SF	A1

The information contained herein comes from sources deemed to be reliable; however, no representation or warranty is made by MW Commercial Realty, Inc. and said information is subject to change without notice. No subagency offered.



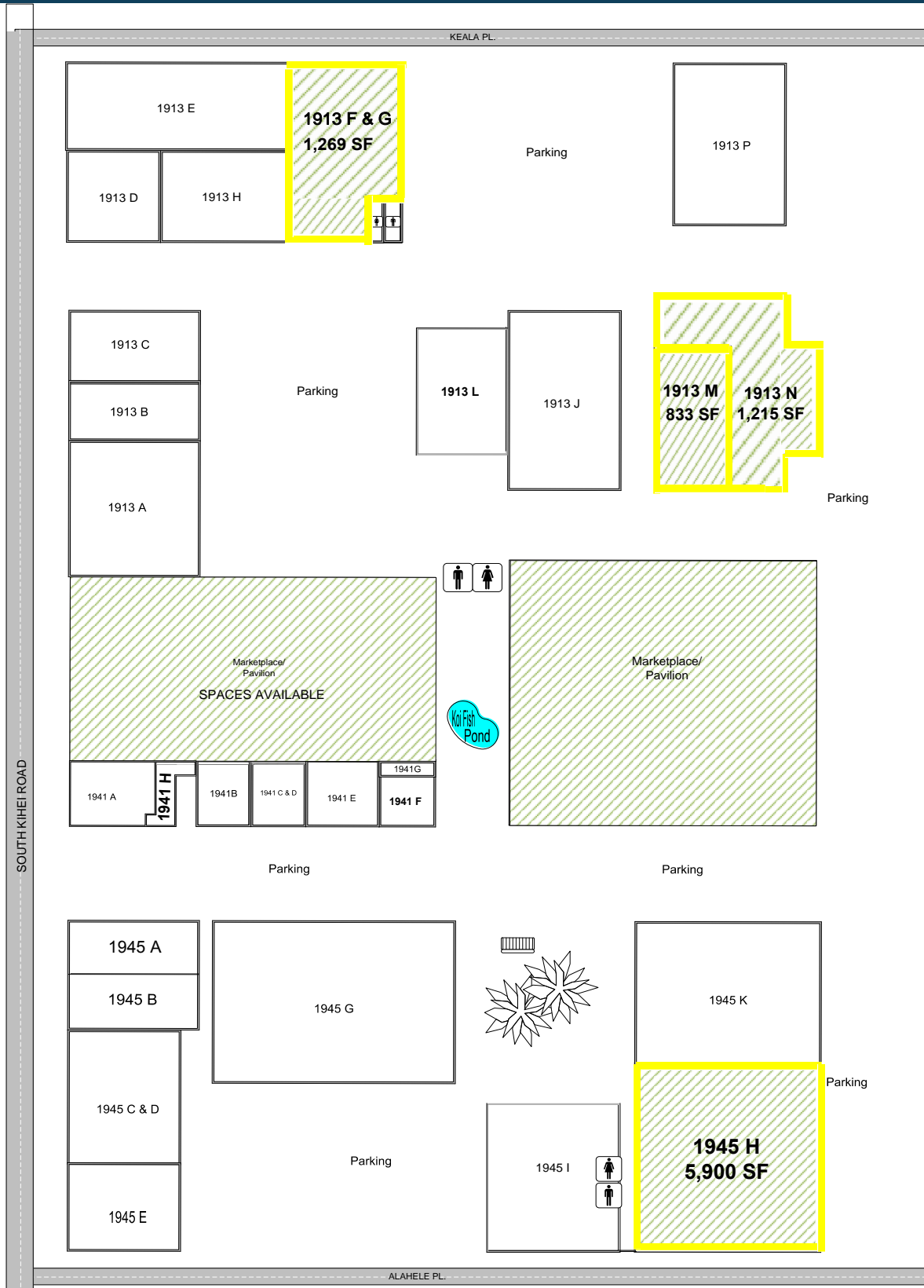
**MW Commercial
Realty, Inc.**
Real Estate Brokerage

1280 S. Kihei Road | Ste. 224 | Kihei, HI 96753
P: (808) 879-5000 | F: (808) 879-3999 | Corp. Lic. # RB-16265
www.mwcommercialrealty.com

KIHEI KALAMA VILLAGE

SITE MAP

1941 S. Kihei Rd., Kihei, HI 96753
TMK: (2) 3-9-003-007



The information contained herein comes from sources deemed to be reliable; however, no representation or warranty is made by MW Commercial Realty, Inc. and said information is subject to change without notice. No subagency offered.



**MW Commercial
Realty, Inc.**
Real Estate Brokerage

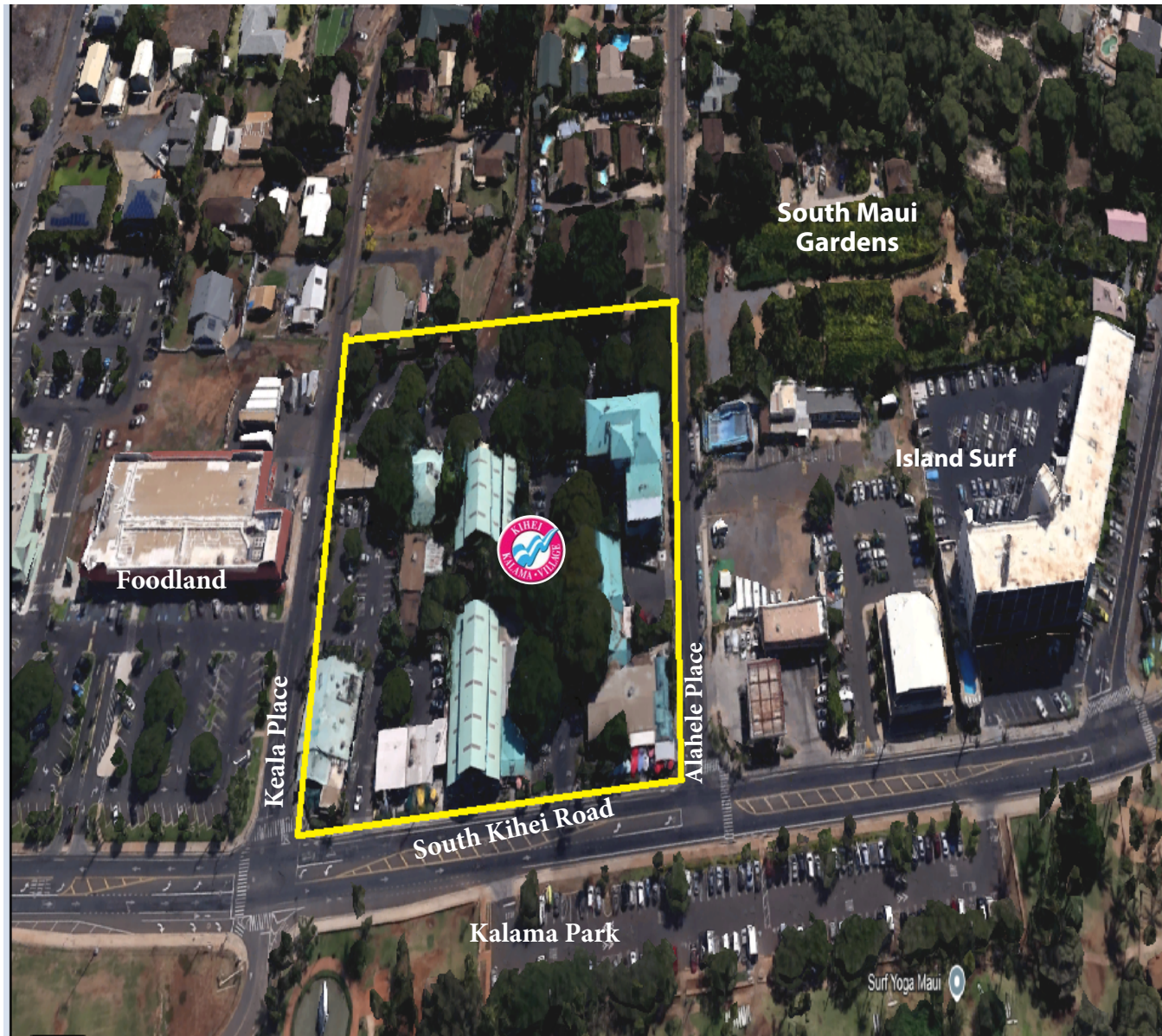
1280 S. Kihei Road | Ste. 224 | Kihei, HI 96753
P: (808) 879-5000 | F: (808) 879-3999 | Corp. Lic. # RB-16265
www.mwcommercialrealty.com

KIHEI KALAMA VILLAGE

1941 S. Kihei Rd., Kihei, HI 96753
TMK: (2) 3-9-003-007

AREA MAP

Anchor Tenants include:
Kihei Cafe, Three's Bar & Grill, CocoNene, and Kai Aloha



The information contained herein comes from sources deemed to be reliable; however, no representation or warranty is made by MW Commercial Realty, Inc. and said information is subject to change without notice. No subagency offered.



**MW Commercial
Realty, Inc.**
Real Estate Brokerage

1280 S. Kihei Road | Ste. 224 | Kihei, HI 96753
P: (808) 879-5000 | F: (808) 879-3999 | Corp. Lic. # RB-16265
www.mwcommercialrealty.com