



# Office / Warehouse Space for Sale or Lease

**830 CORPORATE DRIVE  
JORDAN, MN 55352**

## **Available Space:**

360 SF- Office

5,640 SF- Warehouse

**6,000 SF - Total**

## **Lease Rates:**

Negotiable

## **Sale Price:**

Negotiable

## **2025 Est. Taxes:**

\$17,890.00

## **Loading:**

Three (3) Drive-In Doors

## **Clear Height:**

18'

## **Power:**

400A, 480-230-208 V, 3-phase

## **Property Highlights:**

- 6,000 Square Foot Building
- Situated on 1.72 Acres
- 2013 Construction
- Power distributed throughout for manufacturing
- Small outside storage (fenced) behind the building
- I-2 Zoning
- Floor Drain and Flammable Waste-trap in place

*For information, please contact:*

### **Brian Netz**

*Executive Managing Director*

t 612-430-9947

brian.netz@nmrk.com

### **Lucas Long**

*Director*

t 612-430-9952

lucas.long@nmrk.com

100 South Fifth St, Suite 2100  
Minneapolis, MN 55402

[nmrk.com](http://nmrk.com)

# NEWMARK



Demographics:	1 Mile	3 Miles	5 Miles
Total Population	2,299	8,595	11,532
Total Households	827	2,997	3,974
Average HH Income	\$75,652	\$103,216	\$109,700



For information, please contact:

**Brian Netz**  
Executive Managing Director  
t 612-430-9947  
brian.netz@nrmk.com

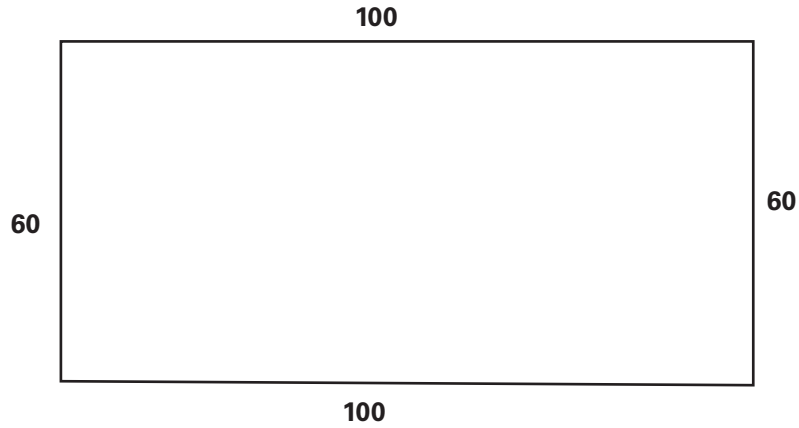
**Lucas Long**  
Director  
t 612-430-9952  
lucas.long@nrmk.com

100 South Fifth St, Suite 2100  
Minneapolis, MN 55402

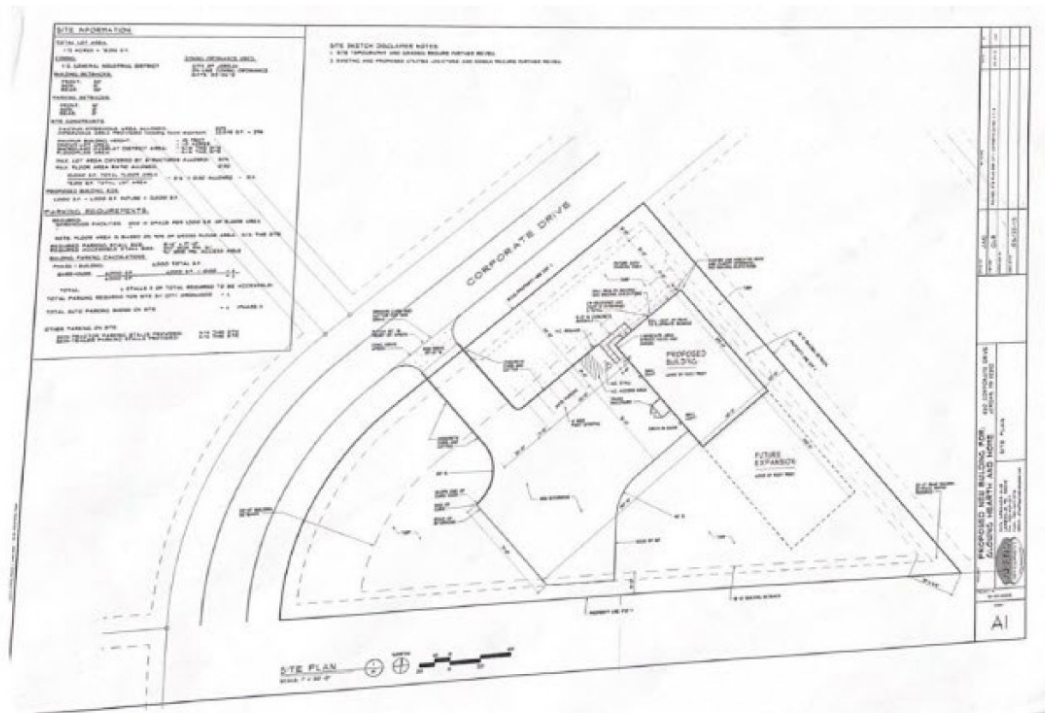
[nrmk.com](http://nrmk.com)

**NEWMARK**

Floor Plan



Site Plan



For information, please contact:

**Brian Netz**  
Executive Managing Director  
t 612-430-9947  
brian.netz@nrmk.com

**Lucas Long**  
Director  
t 612-430-9952  
lucas.long@nrmk.com

100 South Fifth St, Suite 2100  
Minneapolis, MN 55402

[nrmk.com](http://nrmk.com)