



Baypointe At Argyle

6600 Youngerman Cir, Jacksonville, FL 32244



SUPERIOR
REAL ESTATE SERVICES, LLC



Sammy Hale

Superior Real Estate Services

142 King St, Suite A, Saint Augustine, FL 32084

sammyhale83@gmail.com

(904) 810-5758

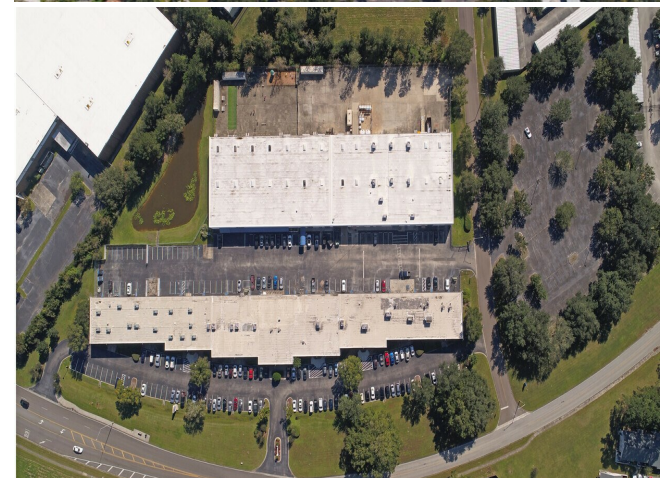


Baypointe At Argyle

Upon Request

35,734 heated and cooled Sq. Ft currently built out as a career college with reception, administration offices, classrooms, library, breakroom, and multiple entrances. The campus features ample parking with an adjacent satellite parking lot. Landlord will consider subdividing the space. Building has frontage and signage opportunities on Youngerman Circle with easy access to Blanding and I-295 /Argyle Forest corridors....

- Satellite Parking Lot
- Turn Key School
- Will Subdivide



Rental Rate:	Upon Request
Property Type:	[object Object]
Center Type:	[object Object]
Gross Leasable Area:	151,157 SF
Walk Score ©:	49 (Car-Dependent)
Transit Score ©:	24 (Minimal Transit)
Rental Rate Mo:	Upon Request

1st Floor

1

Space Available	35,724 SF
Rental Rate	Upon Request
Date Available	30 Days
Service Type	Triple Net (NNN)
Space Type	Relet
Space Use	Office
Lease Term	3 - 10 Years

TRANSPORTATION

TRANSIT/SUBWAY

Convention Center Transit Stop  (Skyway)	25 min drive	16.6 mi
Jefferson Street Transit Stop  (Skyway)	25 min drive	16.7 mi
San Marco Transit Stop  (Skyway)	29 min drive	19.3 mi
Riverplace Transit Stop  (Skyway)	27 min drive	17.3 mi
Kings Avenue Transit Stop  (Skyway)	27 min drive	17.4 mi

AIRPORT

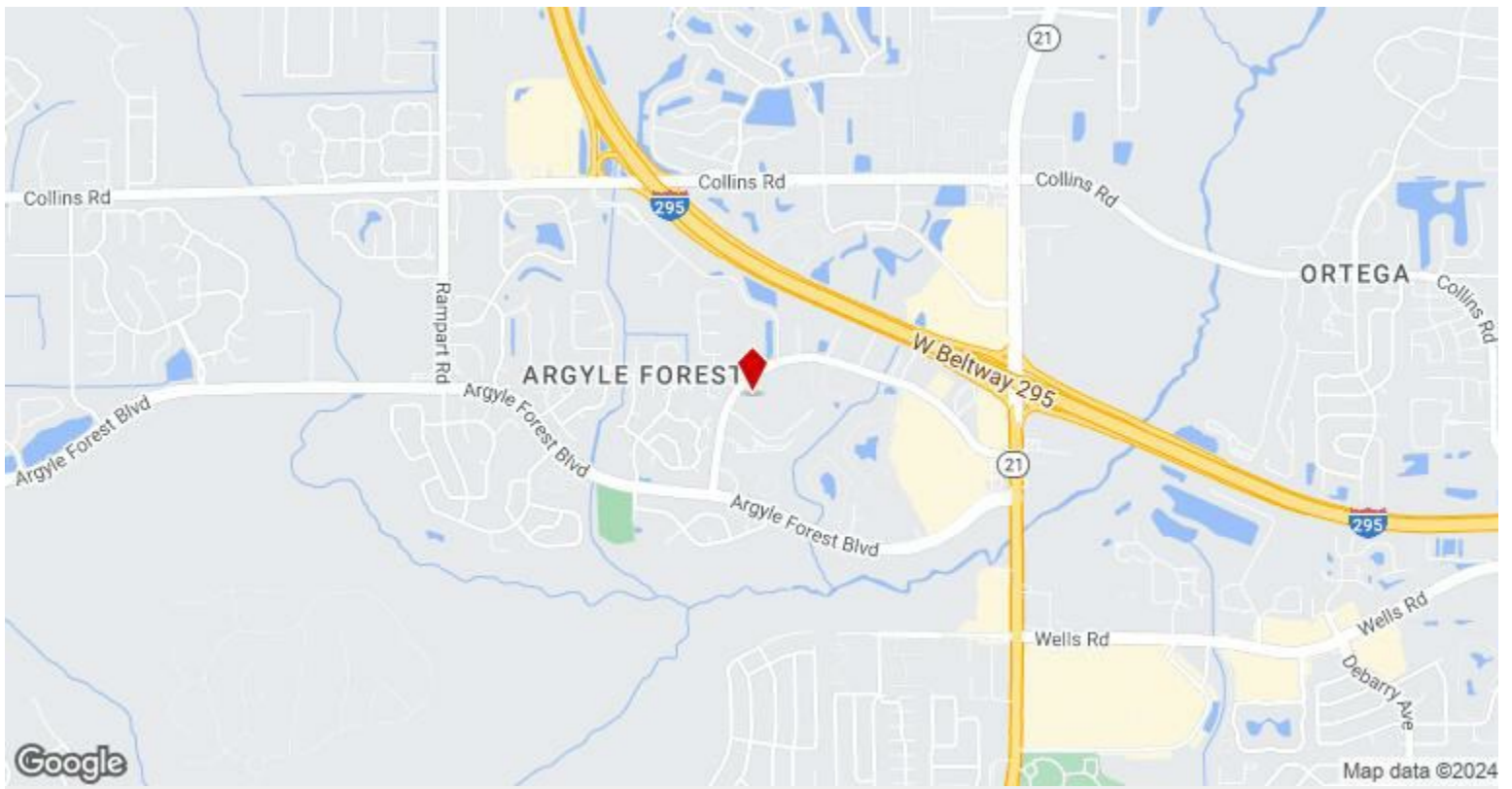
Jacksonville International Airport	39 min drive	27.1 mi
------------------------------------	--------------	---------

FREIGHT PORT

Jacksonville Port	32 min drive	20.9 mi
-------------------	--------------	---------

RAILROAD

TRANSFLO-JACKSONVILLE-FL	21 min drive	12.9 mi
--------------------------	--------------	---------



6600 Youngerman Cir, Jacksonville, FL 32244

35,734 heated and cooled Sq. Ft currently built out as a career college with reception, administration offices, classrooms, library, breakroom, and multiple entrances. The campus features ample parking with an adjacent satellite parking lot. Landlord will consider subdividing the space. Building has frontage and signage opportunities on Youngerman Circle with easy access to Blanding and I-295 /Argyle Forest corridors.

Property Photos

