



WestEnd Logistics

TECTONIC *TRIBEK*
PROPERTIES



**1338 Mount Olive Church Rd
Gastonia, NC**

±43,680 - 87,360 SF Available For Lease

Available Immediately

Matthew Greer, CCIM, SIOR
+1 704 804 5762
matthew.greer@jll.com

Brad Cherry, CCIM, SIOR
+1 704 927 3013
brad.cherry@jll.com

Jay Hill
+1 704 804 5754
jay.hill@jll.com

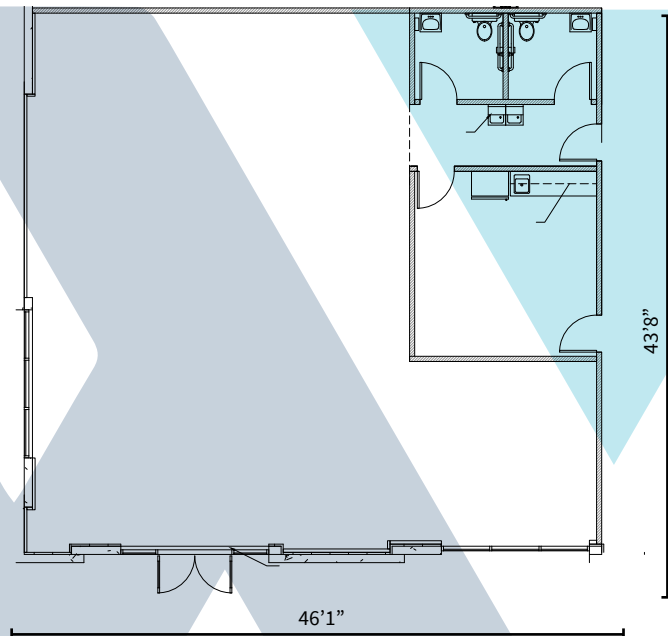


Site Plan & Specifications



Available SF	±43,680 - 87,360 SF
Office SF	±2,100 SF
Clear Height	32'
Loading	7 Dock High Doors, 1 Drive In Doors 3 Existing Pit Levelers
Sprinkler System	ESFR
Trailer Parking	Up to 24 Stalls
Auto Parking	Up to 114 Stalls
Building Dimensions	280' X 676'
Column Spacing	55' X 52' with 60' speed bays
Power	1,400 amps, 277/480V

Office Floorplan



Gaston County Investment Grant Program
5-year tax abatements in place

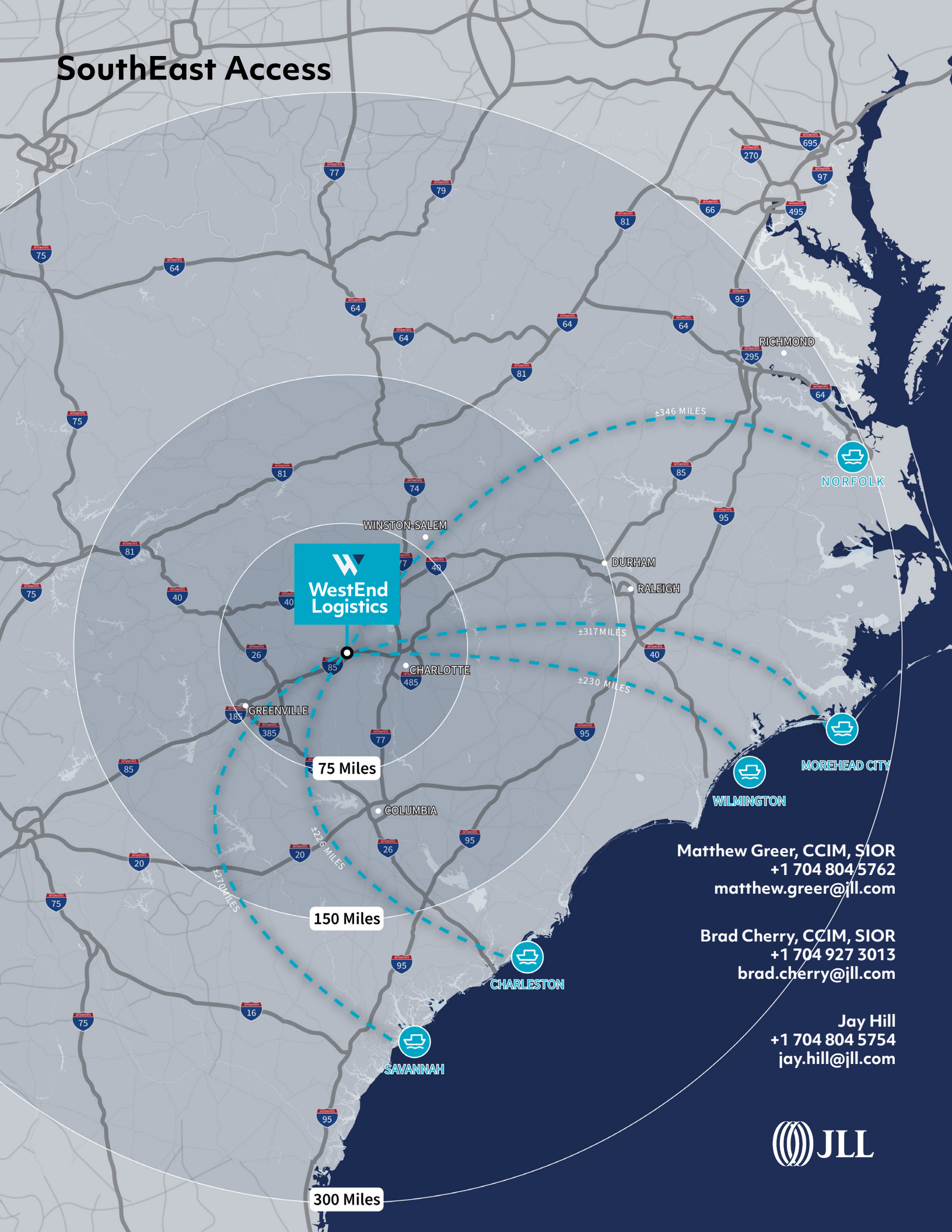
Interstate Access & Amenities



Amenities within 5 miles



SouthEast Access



75 Miles

150 Miles

300 Miles

Matthew Greer, CCIM, SIOR
+1 704 804 5762
matthew.greer@jll.com

Brad Cherry, CCIM, SIOR
+1 704 927 3013
brad.cherry@jll.com

Jay Hill
+1 704 804 5754
jay.hill@jll.com

