



NORTH

BOUNDARIES ARE APPROXIMATE

**69.71 ACRES,
HOLT COUNTY, MO**
For Sale

Here is a great sized parcel of Timber that has all the work completed for platting and subdividing in case you want to do more than Hunt!



18156 Hwy 59 Mound
City, MO 64470
(660)-442-3177

1711 Oregon Hiawatha,
KS 66434
(785)-742-4580

1708 Prairie View Rd, Suite
B Platte City, MO 64079
(816)-219-3010

www.BarnesRealty.com

PROPERTY FEATURES

Price:

\$4,750.00/taxable acres or \$331,122.50 total

Real Estate Taxes:

2023 taxes are \$64.53

Listing Agent:

Jamie Barnes (660)-851-1125 or
Jamie@BarnesRealty.com

Broker Participation:

Barnes Realty Company, as listing Broker, will gladly and fully cooperate with most licensed Real Estate Brokers to obtain a sale of the property on terms satisfactory to the current Owners

Location:

Head west from Amazonia on Hwy T for 4.6 miles. Turn left on road 400 and continue west for 1.4 miles and the tract is on the north and south side of the road



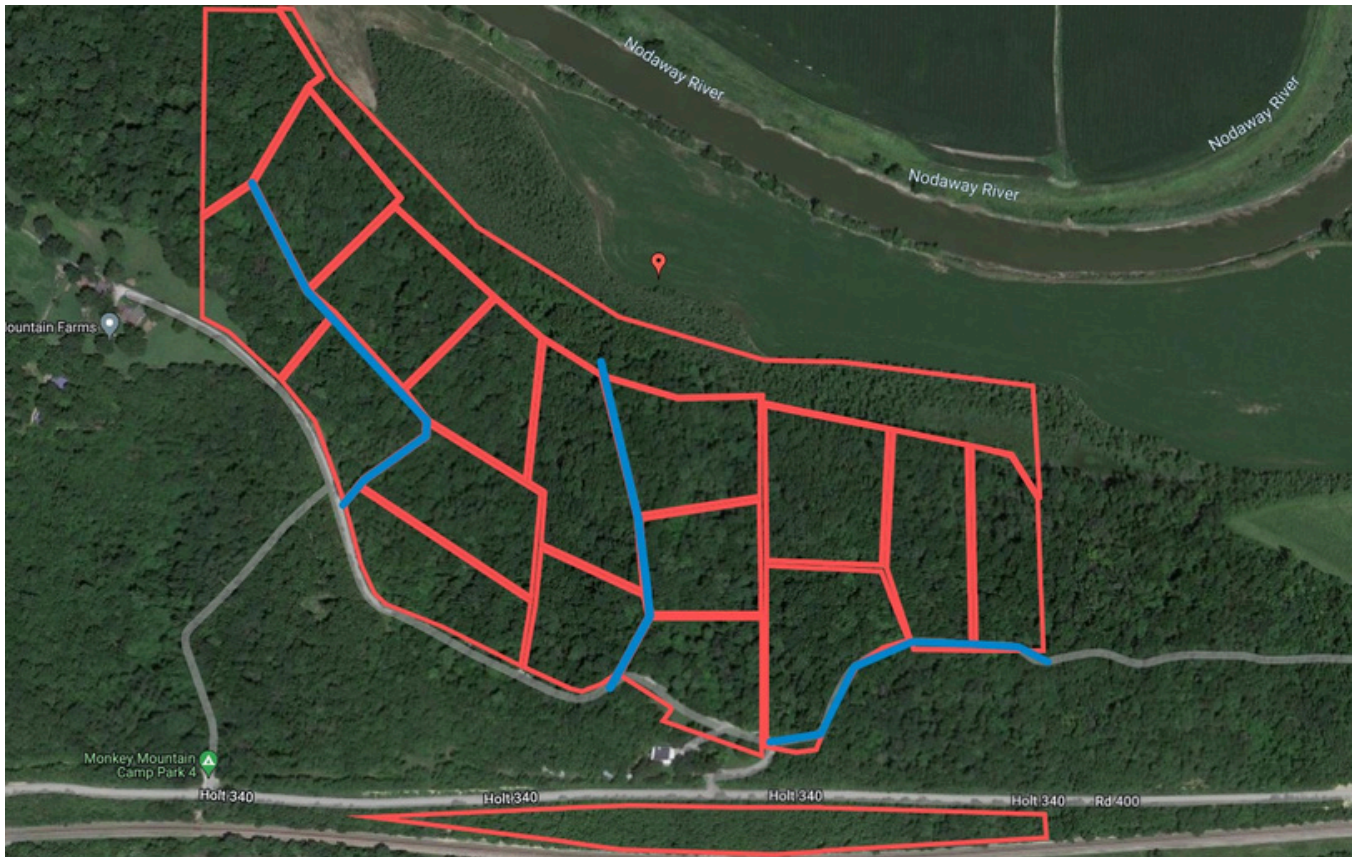
Setting the trend for how Real Estate is sold in the Midwest.

This information is thought to be accurate; however, it is subject to verification and no liability for error and omissions is assumed. Barnes Realty has made every effort to present accurate information on the property presented. Most of the information comes from outside sources: County/Government/Seller and human error can occur. It's the Buyer's responsibility to satisfy himself with the information presented and to determine the information to be true and accurate and the property to be suited for his intended use. The listing may be withdrawn with or without approval. The Seller further reserves the right to reject any and all offers. All inquiries, inspections, appointments, and offers must be sent through:

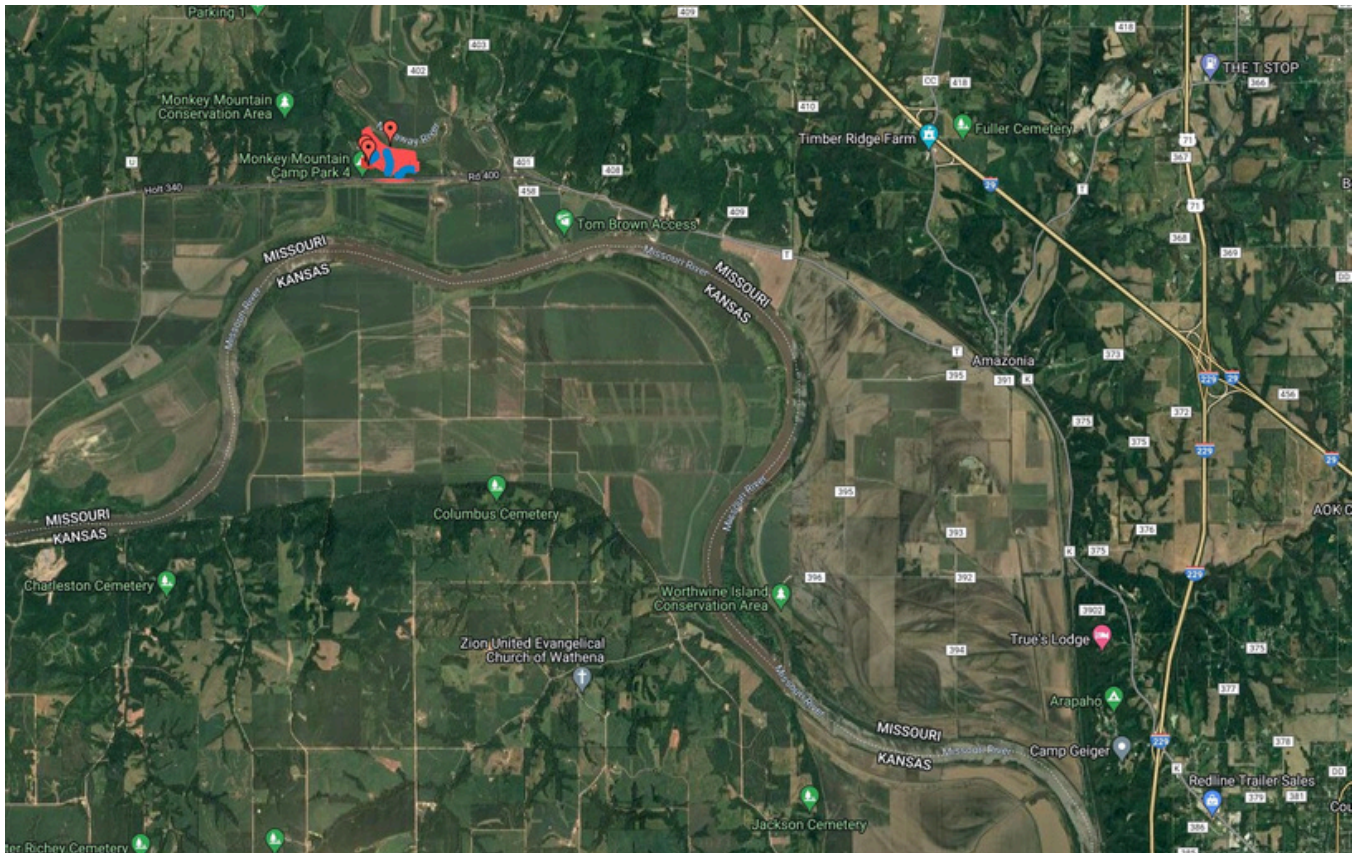
RICK BARNES, BROKER, BARNES REALTY COMPANY, 18156 HWY 59, MOUND CITY, MO 64470 PHONE NUMBER: 1-660-442-3177.

AERIAL MAPS

Google Aerial Map:



General Location Map:



PHOTOS



PHOTOS



PHOTOS

