

OFFICE SPACE FOR LEASE

1155 N. MILWAUKEE AVENUE
AVALONREAL.COM



RIVERWOODS, IL



JOSEPH C. SANTUCCI, MANAGING BROKER
847-506-1000 ext. 5140
jcseavalonreal.com

CARLO J. SANTUCCI, COMMERCIAL BROKER
847-506-1000 ext. 5132
carlo@avalonreal.com

- ✓ SPACE AVAILABLE: 2,727 SF (2ND FLOOR)
- ✓ ASKING RENT: \$18.00/SF MODIFIED GROSS
- ✓ PARKING: 188 SURFACE SPACES AVAILABLE
- ✓ ZONING: B-1
- ✓ LOCATED NEAR HIGH TRAFFIC INTERSECTION
- ✓ VPD: 30,600 ON MILWAUKEE AVE
- ✓ CO-TENANTS: STATE FARM, BEAUTY SALON, DENTIST, & MORE ACROSS FROM WOODMAN'S MARKET
- ✓ AND NEWLY DEVELOPED SHOPPING CENTERS

Information contained herein has been obtained from the property owner(s) or from other sources. We have no reason to doubt its accuracy, but do not guarantee it. This property may be broker owned.



1155 N. Milwaukee Avenue

Demographics	1 Mile	3 Mile	5 Mile
Total Population	6,332	72,515	197,404
Total Households	2,825	27,703	74,296
Median Household Income	\$87,420	\$92,123	\$98,269
Average Age	41	41	41

OFFICE SPACE FOR LEASE

1155 N. Milwaukee Avenue
Riverwoods, IL



Joseph C. Santucci
Managing Broker
847-506-1000 ext. 5140
jcse@avalonreal.com

Carlo J. Santucci
Commercial Broker
847-506-1000 ext. 5132
carlo@avalonreal.com

Information contained herein has been obtained from the property owner(s) or from other sources. We have no reason to doubt its accuracy, but do not guarantee it. This property may be broker owned.

AVALONREAL.COM

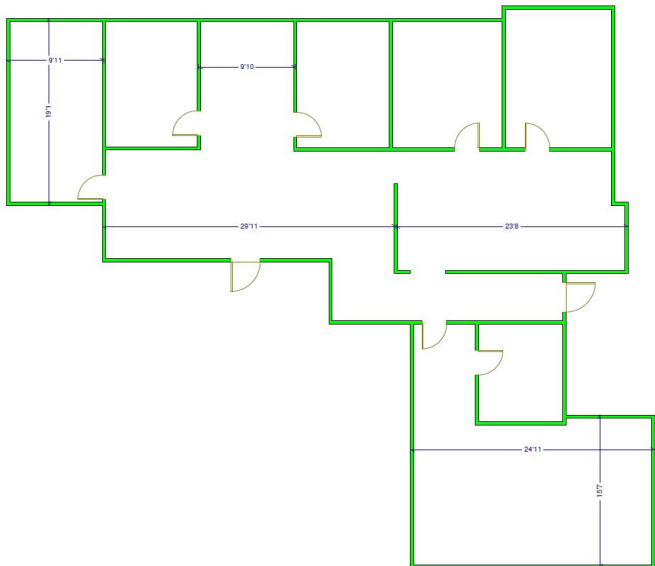
OFFICE SPACE FOR LEASE

1155 N. MILWAUKEE AVENUE

AVALONREAL.COM



2ND FLOOR OFFICE



OFFICE SPACE FOR LEASE

1155 N. Milwaukee Avenue

Riverwoods, IL



Joseph C. Santucci

Managing Broker

847-506-1000 ext. 5140

jcseavalonreal.com

Carlo J. Santucci

Commercial Broker

847-506-1000 ext. 5132

carlo@avalonreal.com

Information contained herein has been obtained from the property owner(s) or from other sources. We have no reason to doubt its accuracy, but do not guarantee it. This property may be broker owned.