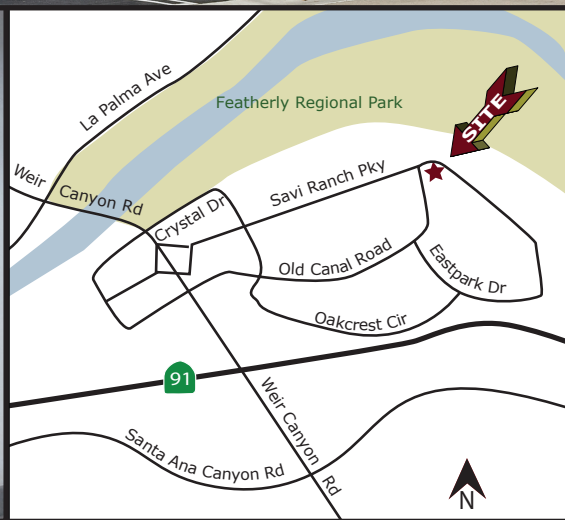


SAVI RANCH

22840 Savi Ranch Parkway • Yorba Linda, California



- 2-Story Building
- First floor available - 10, 131 sq ft
- Direct Access to 91 Freeway at Weir Canyon Road & Immediate access to South Orange County (241)

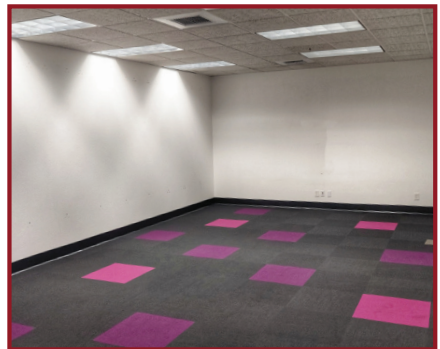
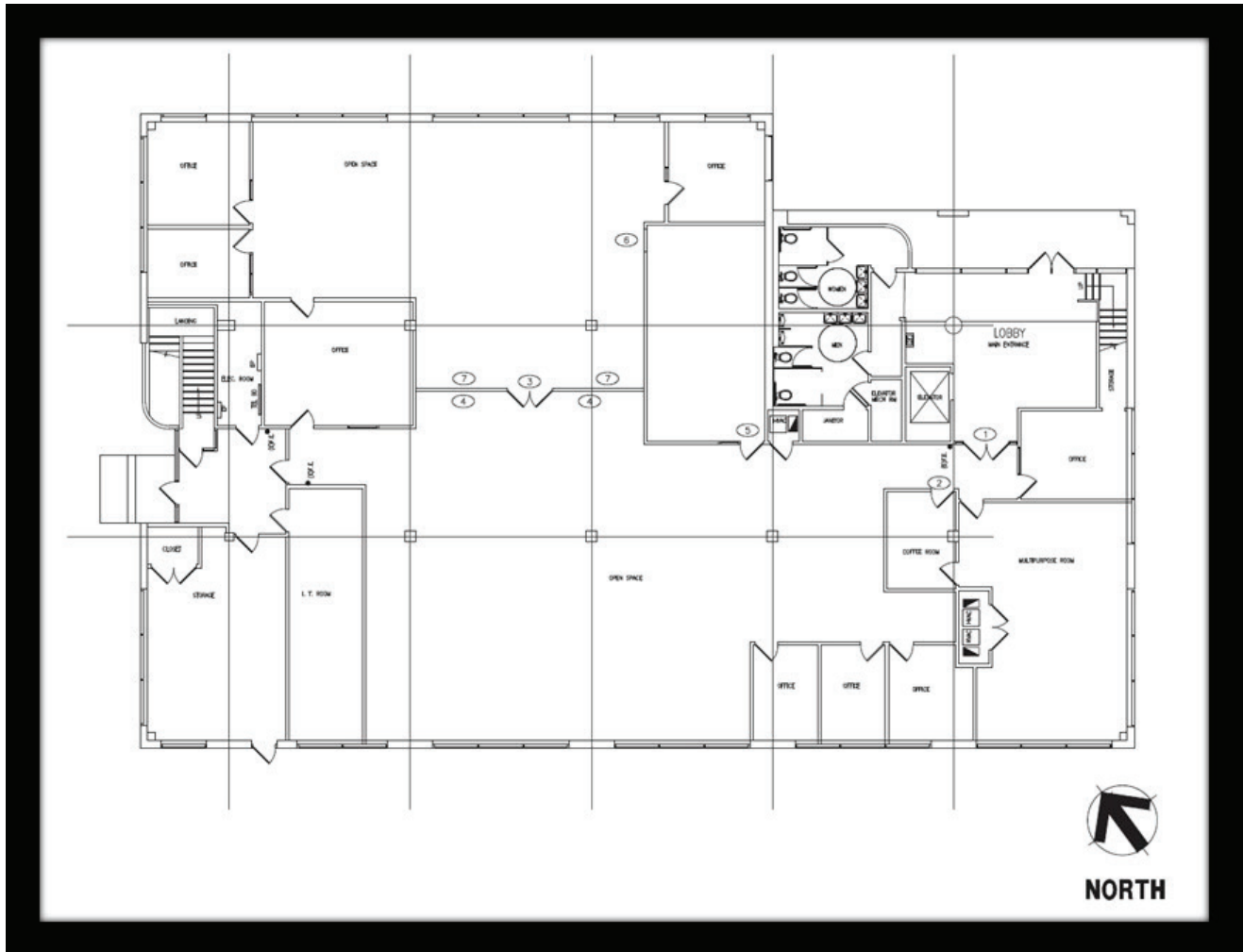
- Close to many amenities including retail services, restaurants, and hotels
- Elevator Served
- 4:1 surface parking

FOR MORE INFORMATION, PLEASE CONTACT:

CAMBER
CORPORATION

Adriana Garcia
agarcia@cambercorporation.com
714-546-4255 Ext. 317

FLOOR PLAN - 1st Floor



FOR MORE INFORMATION, PLEASE CONTACT: