



FOR LEASE

NEW CONSTRUCTION FLEX CONDOS

1690 NW 108TH AVE - STE 151
SWEETWATER, FL 33172



APEX
CAPITAL REALTY

ABOUT APEX CAPITAL REALTY

APEX Capital Realty is an independent commercial real estate brokerage firm. We work directly with a diverse number of real estate and business owners in order to create unique, fulfilling, and lucrative opportunities in the market.

APEX Capital Realty is composed of industry experts and specialists which possess an unparalleled understanding of the unique dynamics and trends that drive the current real estate and business markets. We believe in having a transformative impact in our industry through leadership and advocacy which helps push the creative boundary of what can be achieved. With collaboration ingrained in our company culture, our commercial advisors work hand-in-hand with our clients in order to reach optimal results.



ADVISORS

MARTIN BRAVO

COO / Partner
305 967 3615

Martin@apexcapitalrealty.com

ALEXANDER REYES

Commerical Advisor
786 755 1105

ALEXANDER@apexcapitalrealty.com

OFFERING SUMMARY

10890 NW 17TH ST, SWEETWATER, FL 33172

Apex Capital Realty is proud to introduce one new construction industrial condo for Lease.

The unit include two-room office space with air conditioning, a Bathroom, Modern lighting, a Glass storefront, and shared parking spaces. The units are perfect for storage and dispatch. Also perfect for vehicle storage. Ability to add vehicle lifts for car storage. 18+ foot ceilings.

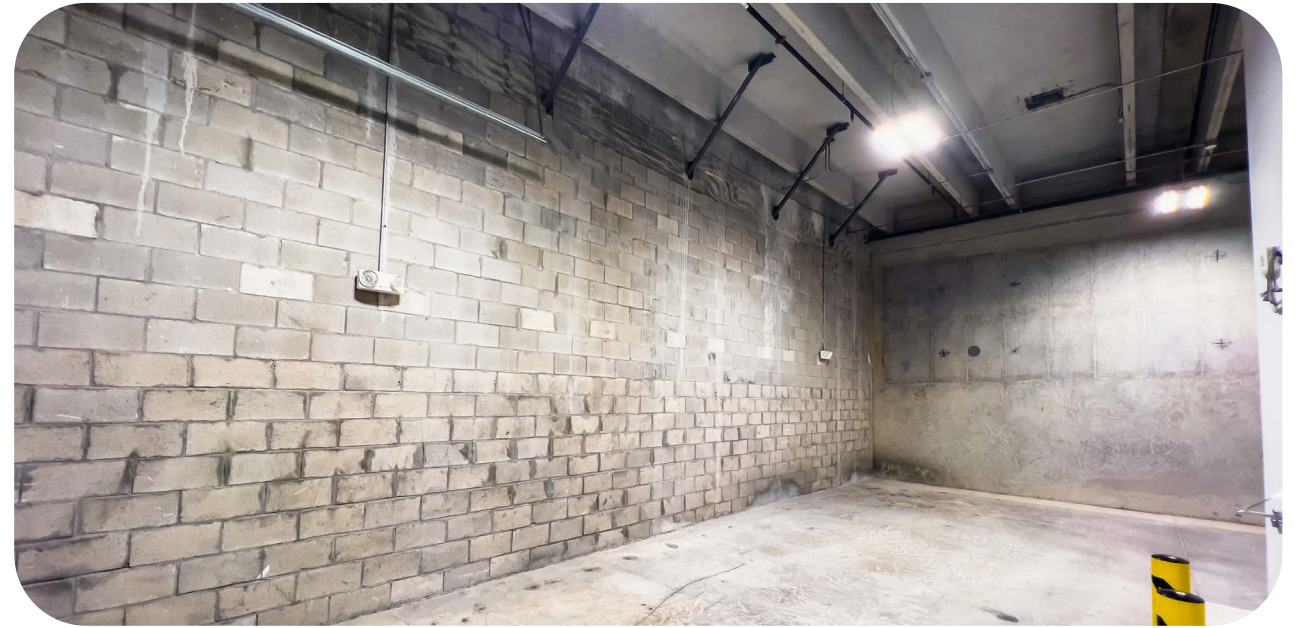
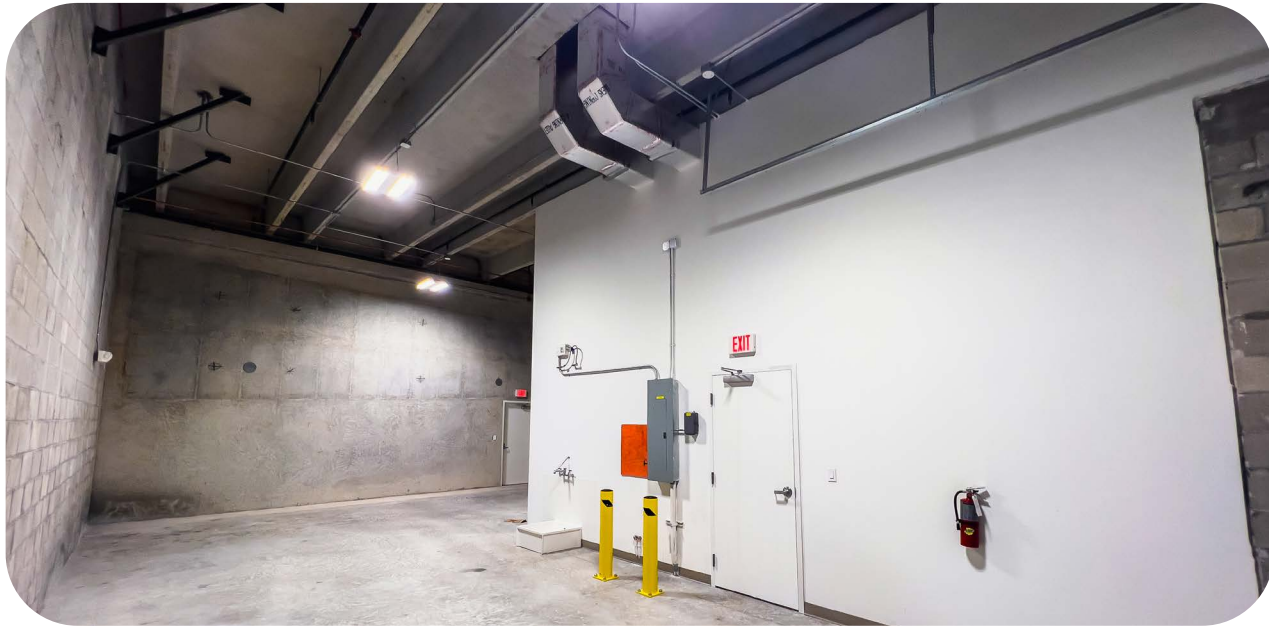
Fantastic location, next to Dolphin Mall and Miami International Mall. No Columns!

Unit 151	1,290 SF
Ceiling Height	18"
Year Built	2022
Asking Price	\$31.63 PSF Modified Gross



HIGHLIGHTS

- Easy Access to Dolphin Expwy (836), Turnpike, & 826
- Minutes from Miami International Airport
- New Construction
- Oversized Drive In Door
- 250 SF Office Space w/ 1 Bathroom and Full A/C



UNIT 150

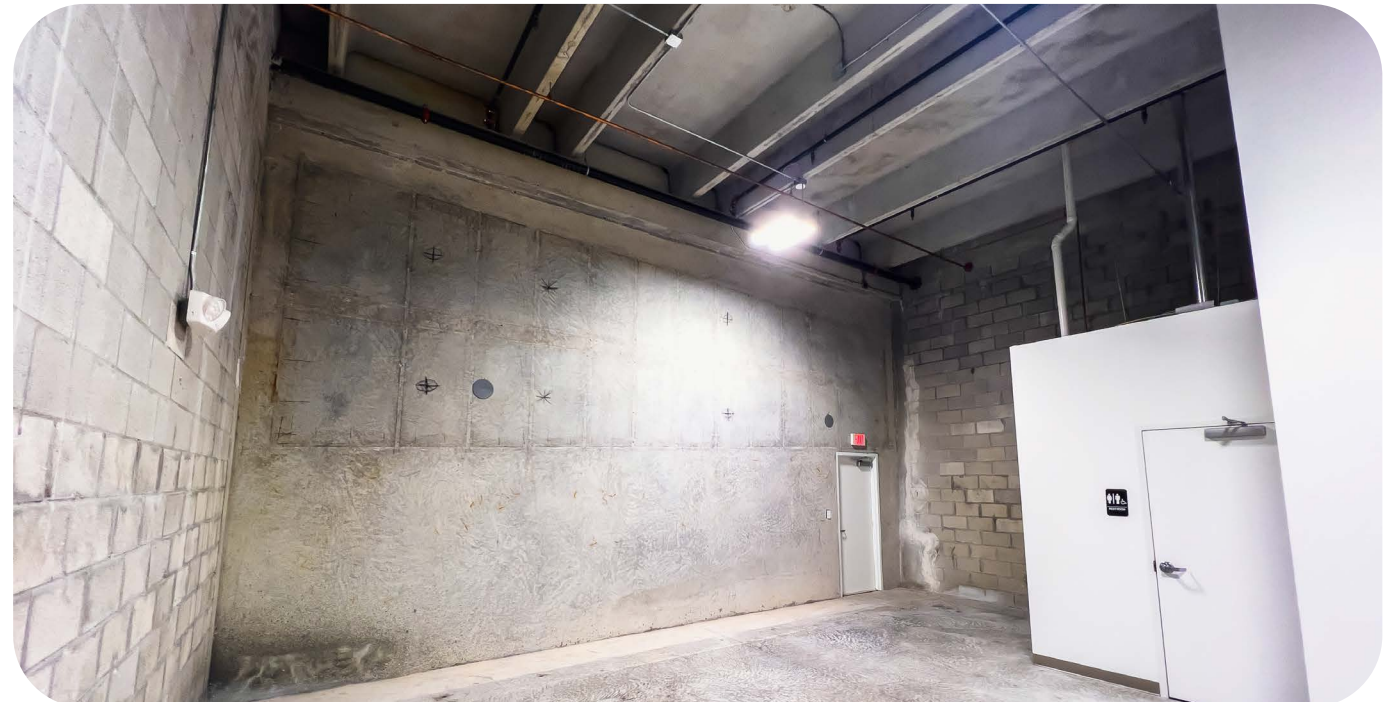
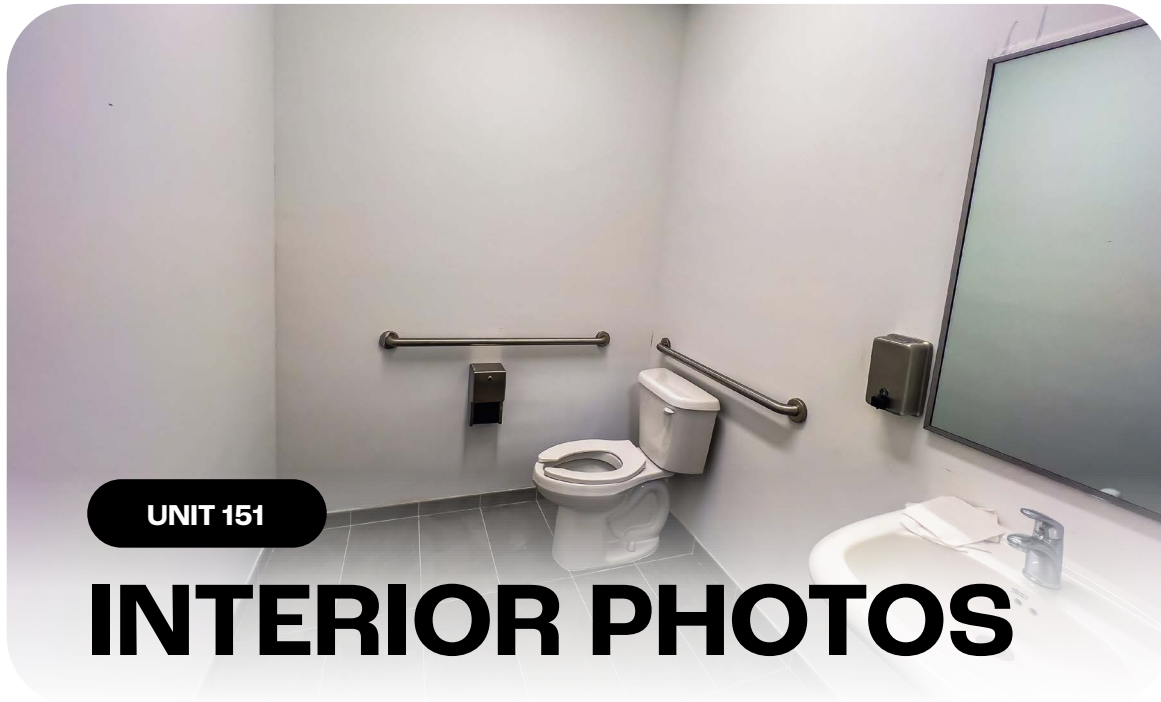
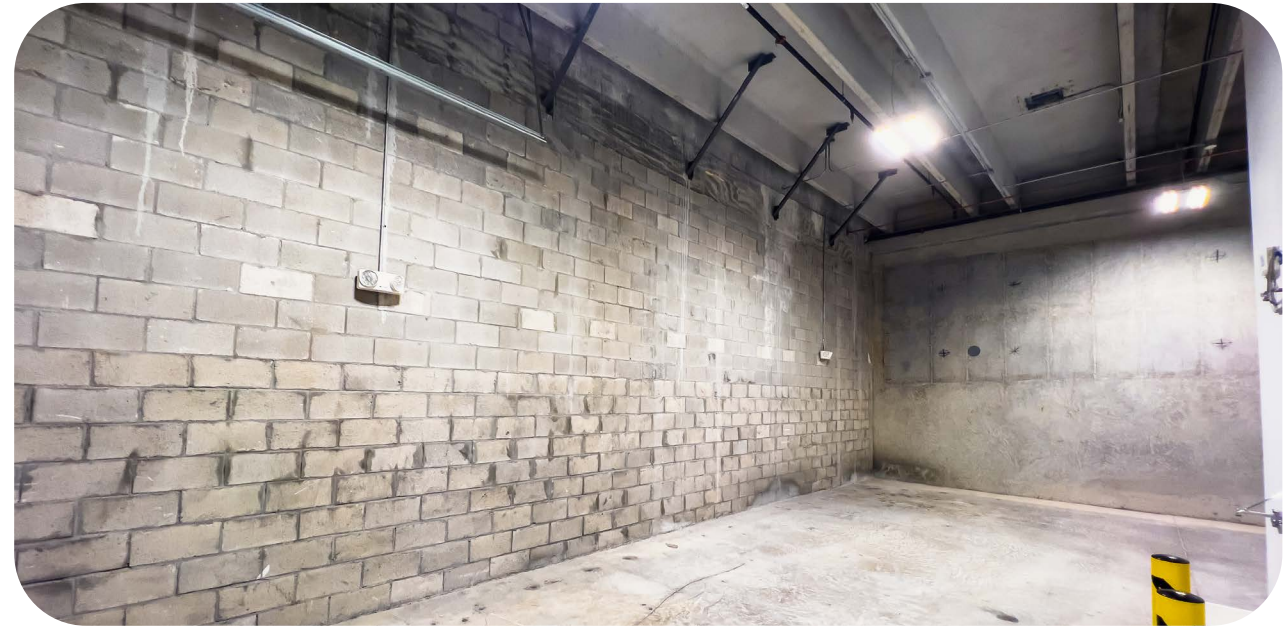
INTERIOR PHOTOS



This information has been obtained from sources believed reliable. We have not verified it and make no guarantee, warranty or representation about it. ©2023-2024 APEX CAPITAL REALTY LLC.

MARTIN BRAVO | COO / PARTNER | 305 967 3615
ALEXANDER REYES | COMMERCIAL ADVISOR | 786 755 1105

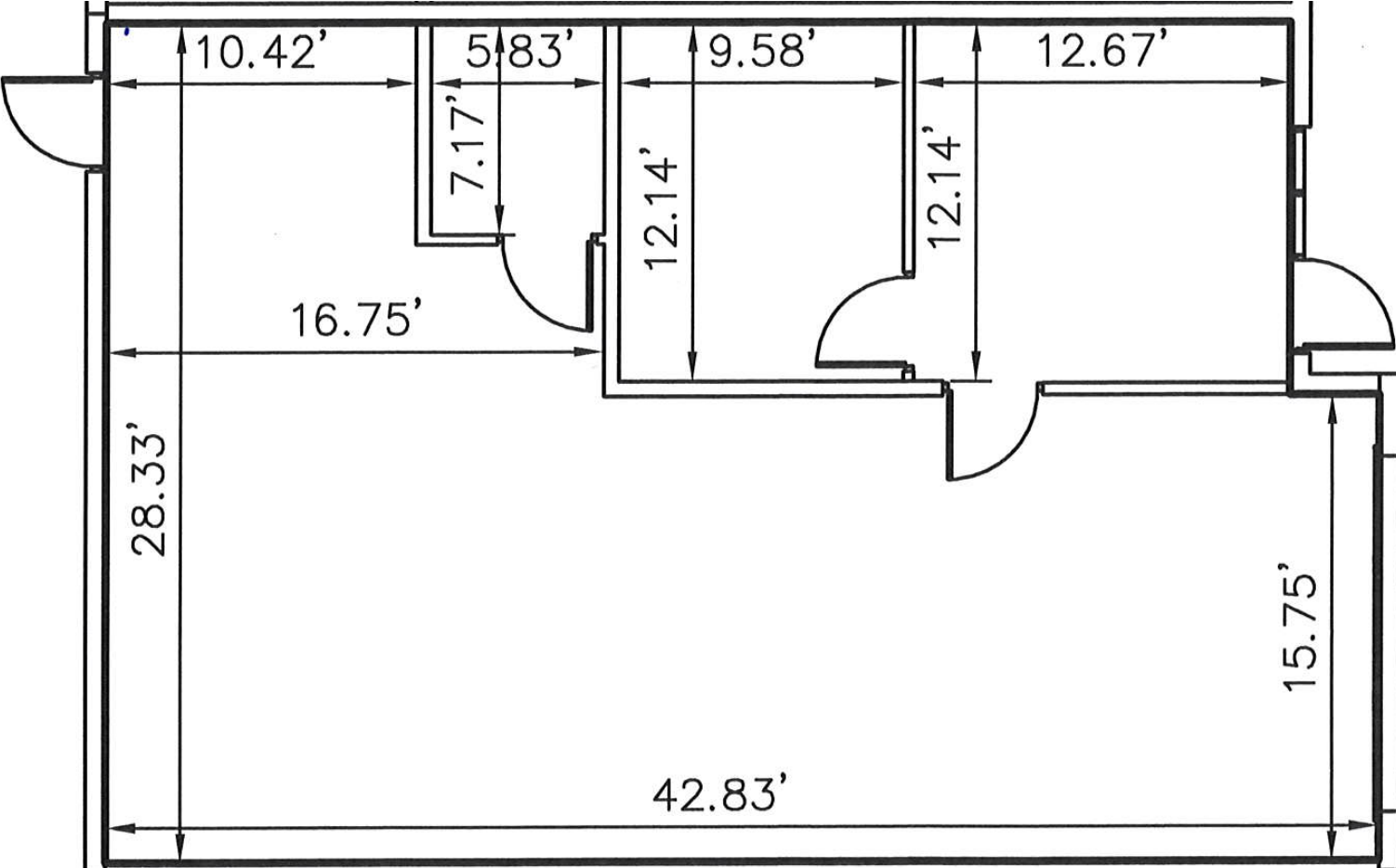




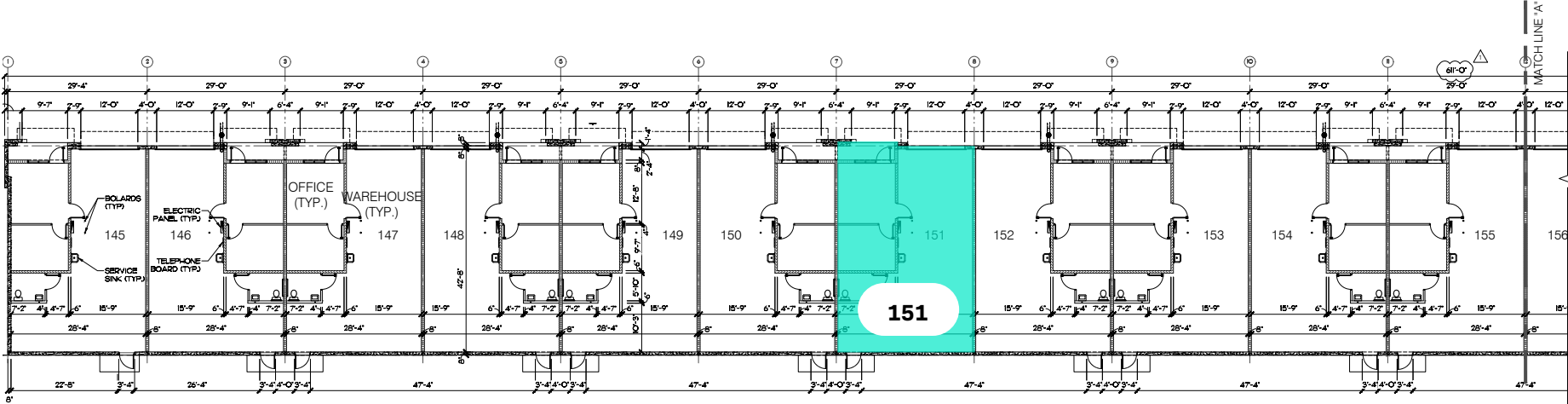


INTERIOR PHOTOS

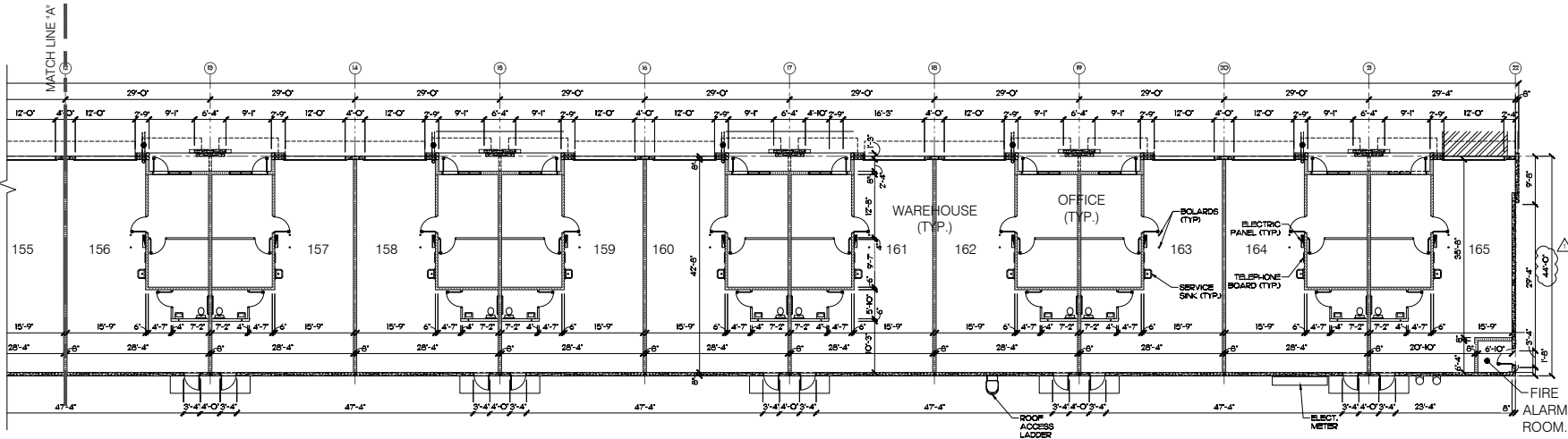
UNIT 151 FLOOR PLAN



BUILDING FLOOR PLAN

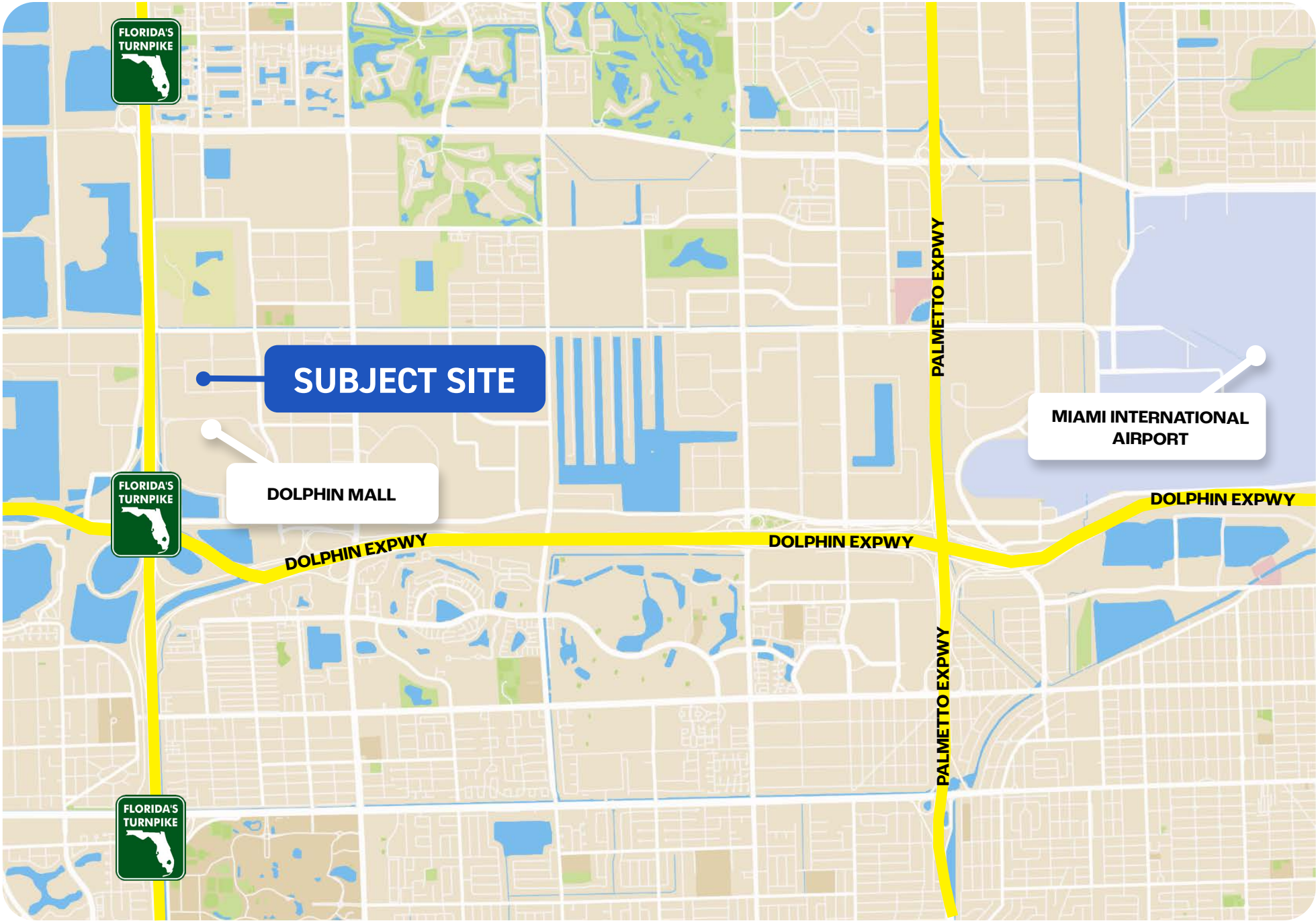


 FLOOR PLAN BUILDING 2 PORTION "A"
SCALE: 3/32" = 1'-0"



 FLOOR PLAN BUILDING 2 PORTION "B"
SCALE: 3/32" = 1'-0"

RETAIL MAP





MARTIN BRAVO

COO / Partner

305 967 3615

Martin@apexcapitalrealty.com

ALEXANDER REYES

Commerical Advisor

786 755 1105

Alexander@apexcapitalrealty.com

561 NE 79 ST, Suite 420

Miami FL 33138

305 570 2600

www.apexcapitalrealty.com