

# Route 137 & Midlothian Rd.

70 Acres Total Available for Sale

Route 137 & Midlothian Rd  
Libertyville, IL 60048

Land for Sale | 5 - 70 Acres | Permit Ready



For Sale | 5 - 70 Acres Available

Rt 137 & Midlothian Rd | Libertyville, IL 60048



# 5 - 70 Acres Available

## Libertyville, IL

This 70 Acre site is located in Libertyville, IL directly situated off of Illinois Routes 137 and Midlothian Road. This location provides quick access to Route 45 and Interstate 94.

The area surrounding the available site includes numerous retail and lodging amenities as well as prestigious corporate neighbors including Medline, Culligan, Saia Fright, BCI Acrylic, FedEx, ComEd, and Brightstar.

### Property Highlights

±70 Acres

Corporate neighbors include FedEx, Medline, Culligan, and Saia Freight

Low Lake County real estate taxes

Road, utilities, and sewers in place

Permit ready

Close proximity to multiple Metra lines

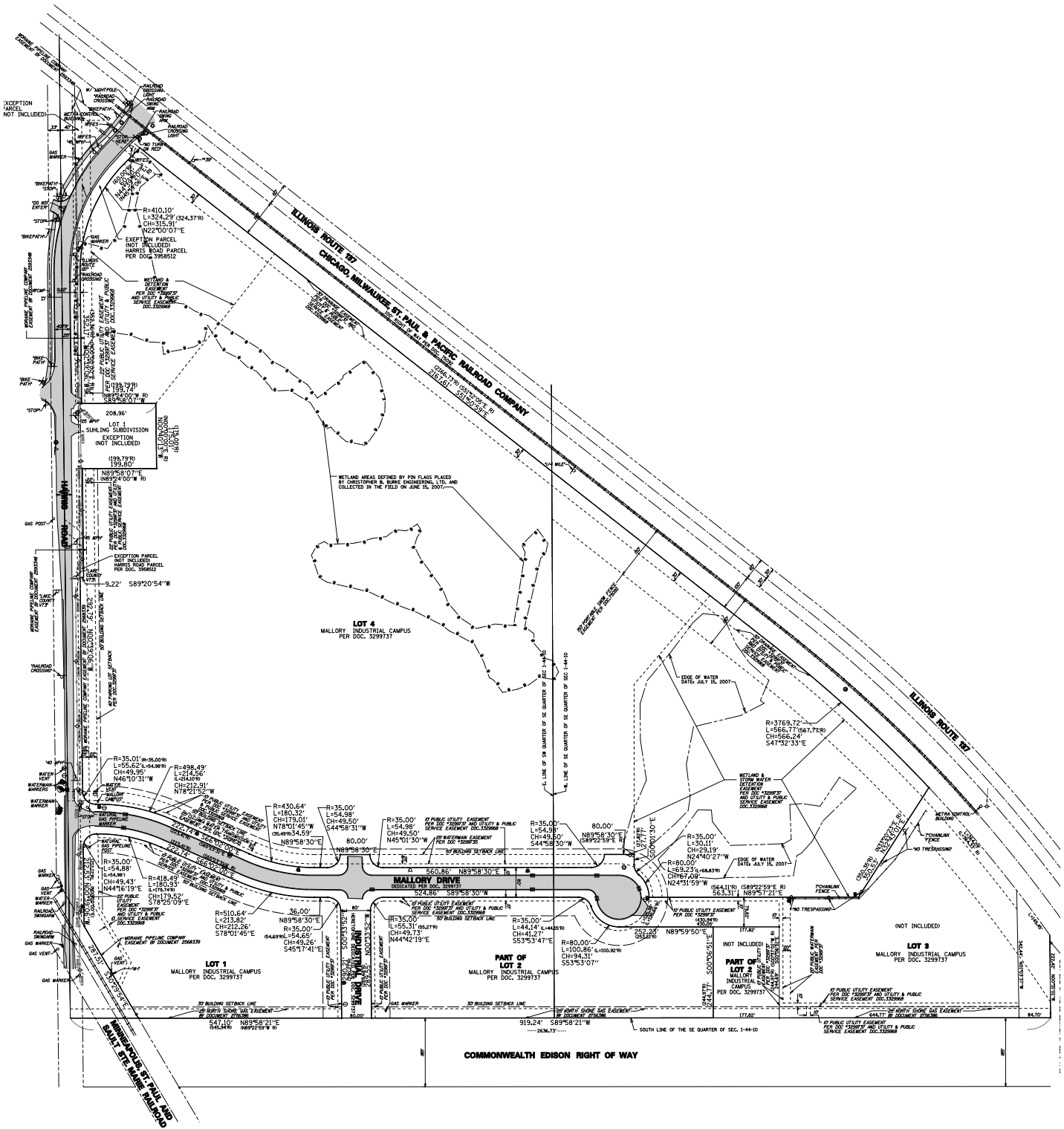
Asking Price: Subject to Offer

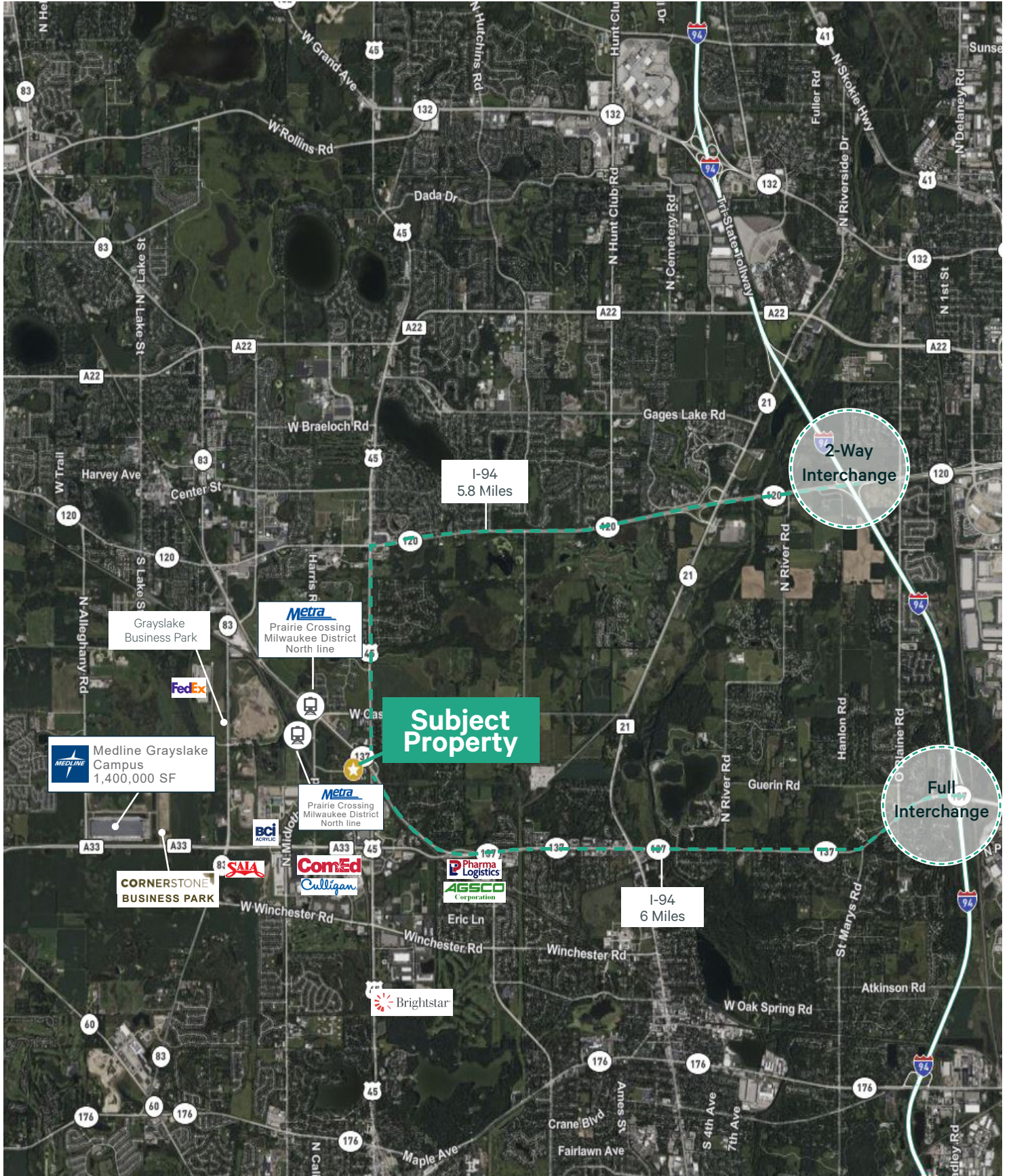
For Sale | 5 - 70 Acres Available  
Rt 137 & Midlothian Rd | Libertyville, IL 60048

For Sale



# Survey





For Sale | 5 - 70 Acres Available

Rt 137 & Midlothian Rd | Libertyville, IL 60048

For Sale

# Land Available

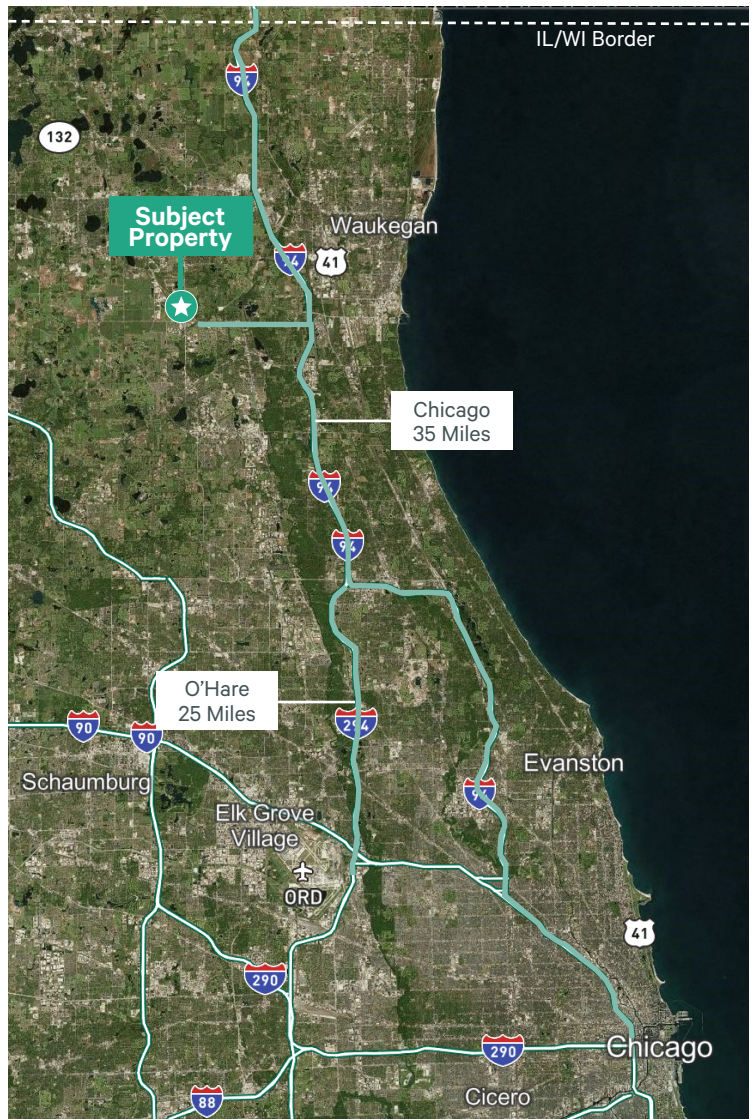
## Lake County, IL

This property is located in Lake County, IL and situated directly off of Illinois Route 137 and Midlothian Road, providing quick access to Route 45 Interstate 94.

The area surrounding the park includes numerous retail and lodging amenities as well as prestigious corporate neighbors including Medline, Culligan, ComEd, and Brightstar.

The property is also close to a number of Metra Stations that connect directly to Chicago's Union station with stops near O'Hare International Airport.

- + 6 miles to I-94 Tristate Tollway
- + 2 miles to Milwaukee Avenue Route 21
- + 35 miles to Chicago Downtown
- + 25 miles to O'Hare International Airport
- + 18 miles to IL/WI border



## Contact Us

### Brian Buckingham

First Vice President

+1 630 573 7021

brian.buckingham@cbre.com

### Sam Badger, SIOR

Senior Vice President

+1 847 310 2099

sam.badger@cbre.com

### Whit Heitman

Senior Vice President

+1 847 624 4947

whit.heitman@cbre.com

© 2022 CBRE, Inc. All rights reserved. This information has been obtained from sources believed reliable, but has not been verified for accuracy or completeness. You should conduct a careful, independent investigation of the property and verify all information. Any reliance on this information is solely at your own risk. CBRE and the CBRE logo are service marks of CBRE, Inc. All other marks displayed on this document are the property of their respective owners, and the use of such logos does not imply any affiliation with or endorsement of CBRE. Photos herein are the property of their respective owners. Use of these images without the express written consent of the owner is prohibited.

