

FOR LEASE

2424

OFFICE SPACE

2424 Wilcrest Drive
Houston, TX 77042

LANDPARK

2550 Gray Falls Drive, Suite 400
Houston, Texas 77077

713.789.2200

www.LandParkCo.com

2424 Wilcrest Drive • Houston, Texas 77042

PROPERTY DESCRIPTION

Prestigious Westchase District Location! This beautiful 2 story building features a beautiful atrium, tiled entryway surrounded by lush landscaping.

Conveniently located in Southwest Houston on the northwest corner of Westheimer and Wilcrest, just minutes from Sam Houston Parkway, the Galleria, and Downtown business district. New ownership with onsite responsive management and leasing. Garage, open surface and covered parking available. Flexible leases available. Great restaurants and many fast food locations nearby. Please call for more information or to schedule your tour.

This spacious office building located at 2424 Wilcrest Dr in Houston, Texas is now available for lease. The building boasts 22033 square feet of functional office space, ideal for businesses of all sizes. The property is strategically located in a prime area in Houston, offering easy access to major highways, restaurants, and shops. The building is well-maintained and features modern amenities, including air conditioning, high-speed internet, and ample parking space for employees and visitors. The office space is structured to provide a comfortable work environment, with high-ceilings and large windows that let in plenty of natural light. Additionally, the building is equipped with a secure entrance and 24-hour security to ensure the safety of tenants and their assets. This property is an excellent choice for businesses in need of sturdy and reliable office space in a highly sought-after area of Houston. Don't miss out on this fantastic opportunity!

For More Information

Matt Easterling

713.325.4112

measterling@landparkco.com

Alex Houston

832.657.1741

ahouston@landparkco.com

LandPark Commercial

2550 Gray Falls Drive, Suite 400

Houston, Texas 77077

713.789.2200

www.LandParkCo.com



PROPERTY HIGHLIGHTS

- 24/7 Keycard Access
- On-site Property Management
- On-site Porter
- Security
- Great Visibility off Westheimer Rd
- Flexible Lease Options Are Available
- Located in the Westchase District
- High Speed Internet Available

LANDPARK

FOR LEASE

SPACE AVAILABILITY

UNIT	SF	RATE (sf/yr)
Suite 100	3,478 SF	\$16.50
Suite 105	2,025 SF	\$16.50
Suite 107	831 SF	\$16.50
Suite 114	1,489 SF	\$16.50
Suite 210	3,652 SF	\$16.50



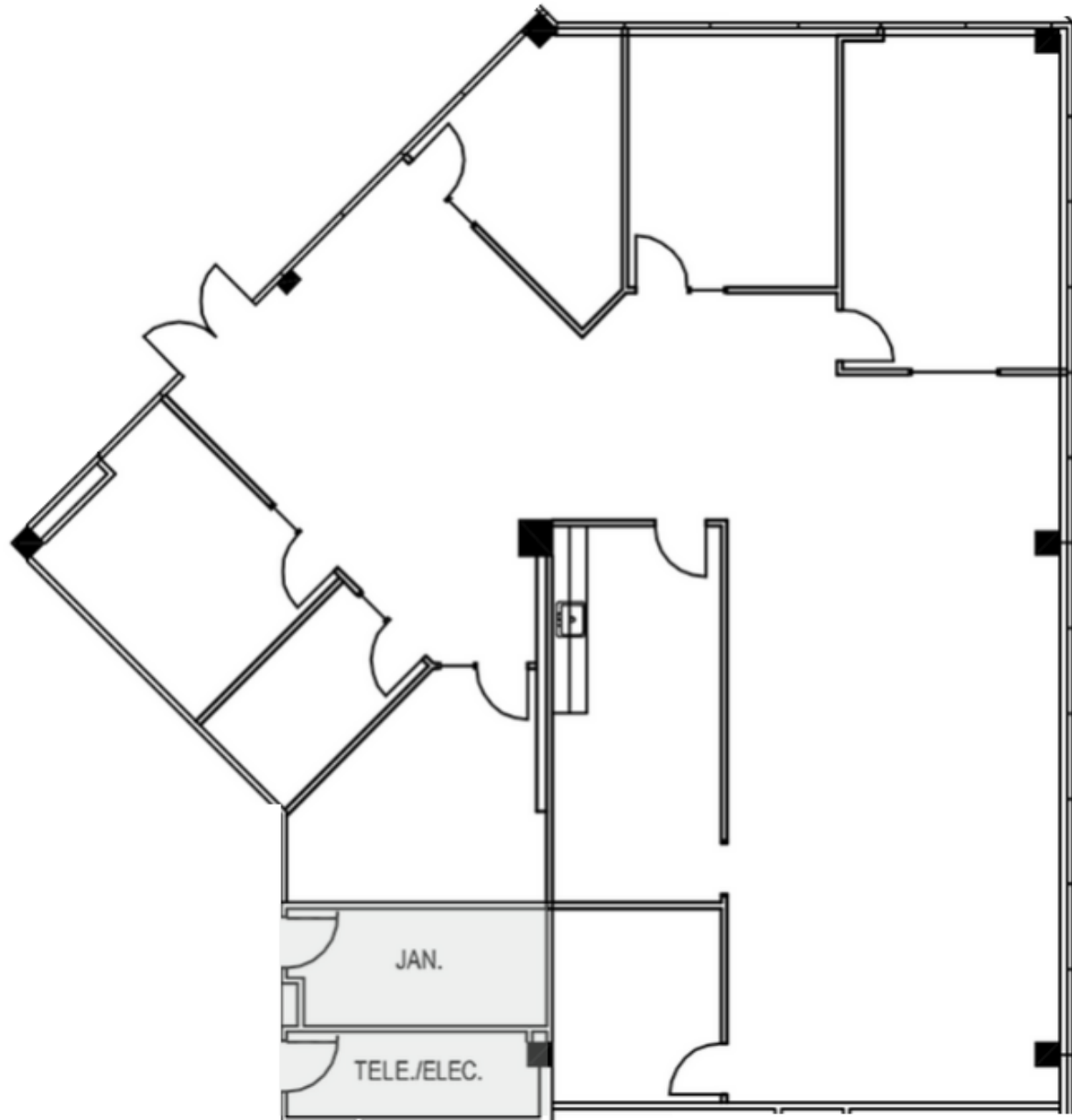
Availability

LANDPARK

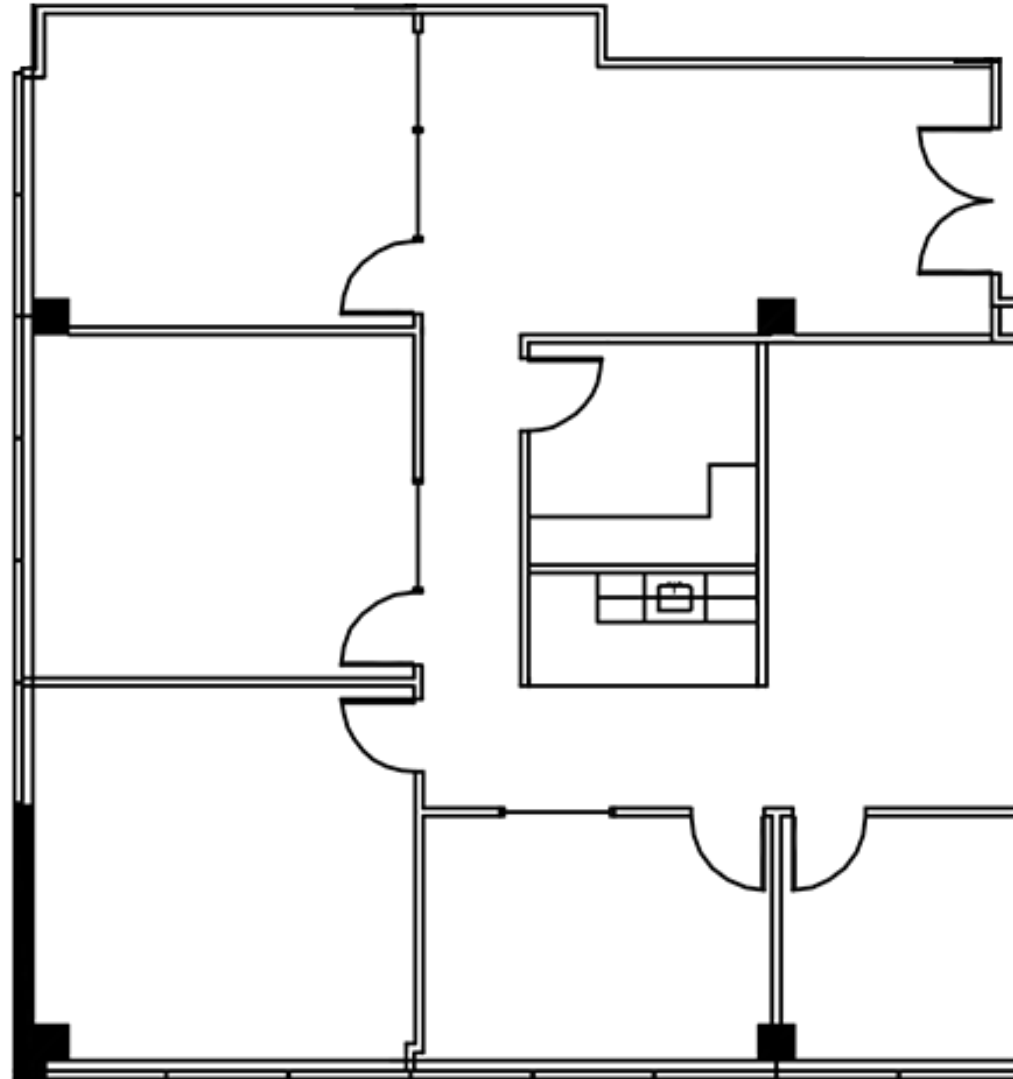
FOR LEASE



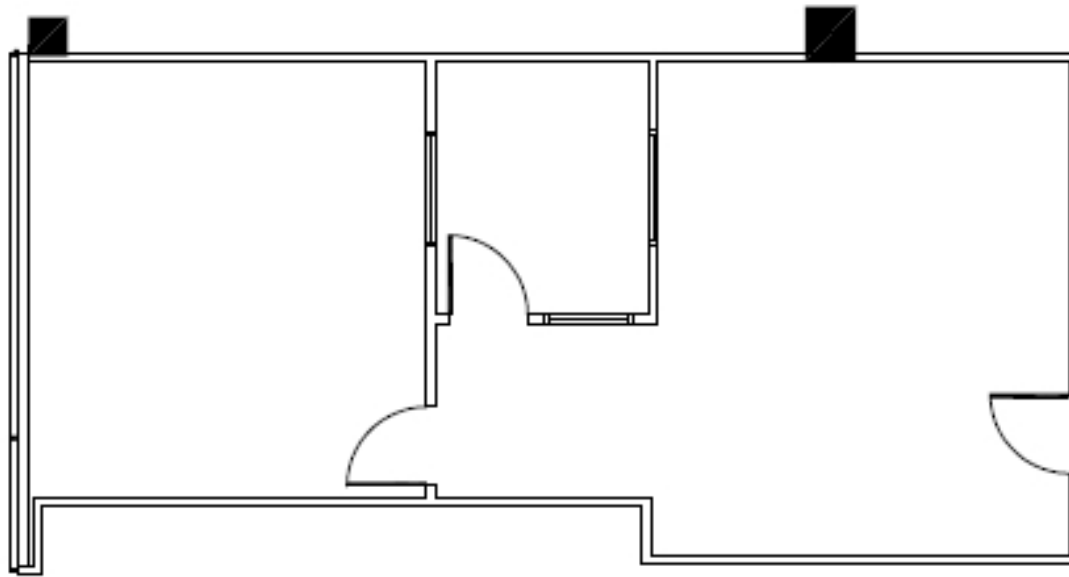
Photos



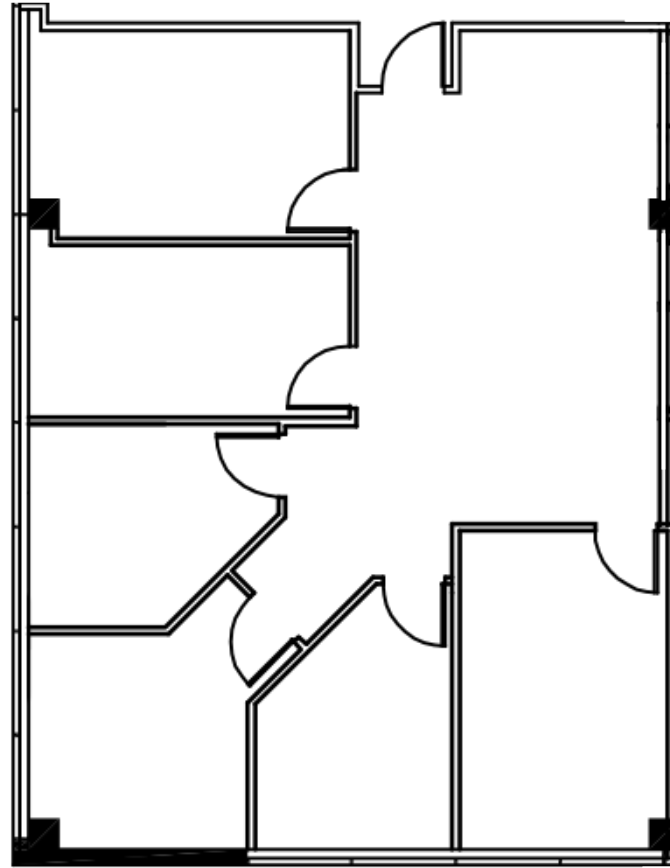
Suite 100
3,478 SF



Suite 105
2,025 SF



Suite 107
831 SF



Suite 114
1,489 SF



Suite 210
3,652 SF

