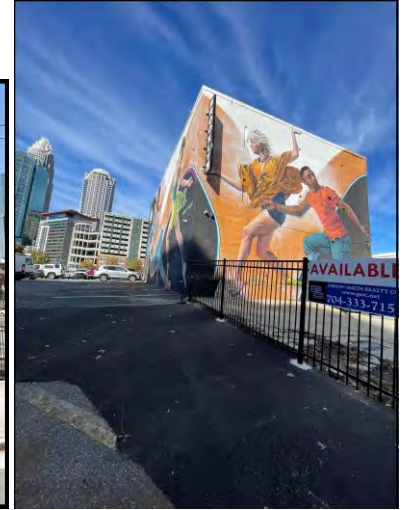
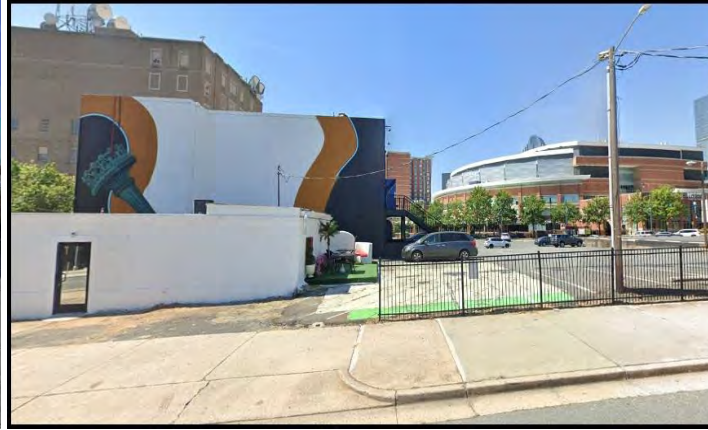


FOR LEASE

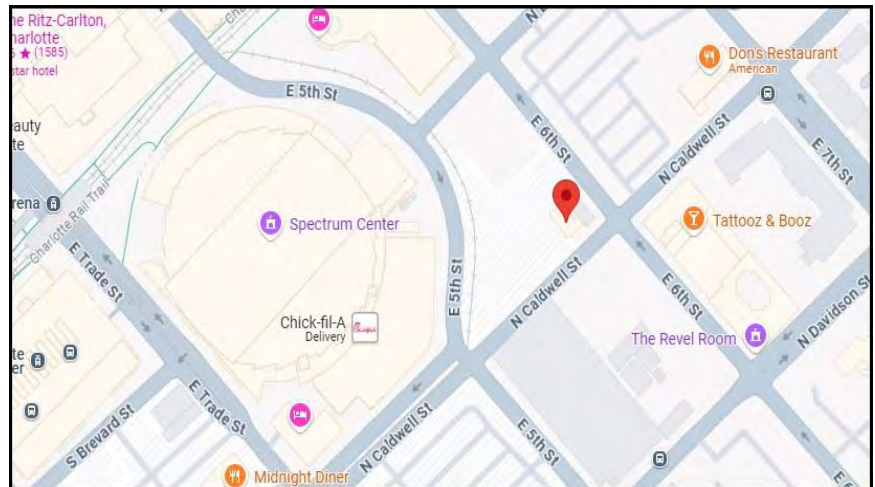
CHARLOTTE UPTOWN FREESTANDING CORNER

225 N. Caldwell Street and E. 6th Street



FEATURES:

- Former Nightclub
- Two and a half floors 6,480 s.f. +/-
- Approx. 300 feet from Hornet's Arena
- Zoned UC
- Tax Parcel 080-052-06



Base Rent \$15,000 per month NNN



FOR FURTHER DETAILS CONTACT:
JOHN N. JONES, PRESIDENT
Direct: 704-408-8166 | Email: jjones@gsrc.net

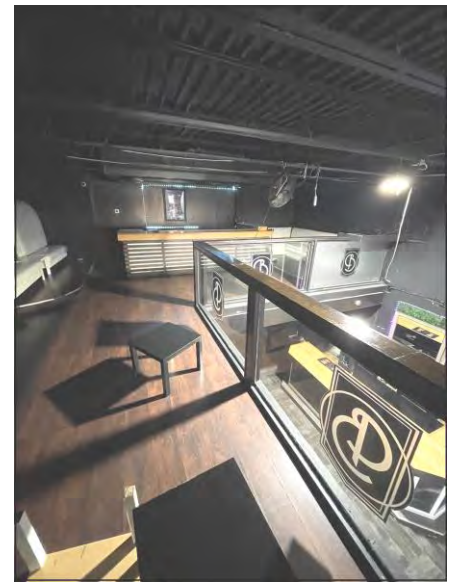
GIBSON SMITH REALTY CO.
1100 Kenilworth Avenue, Suite 200
Charlotte, NC 28204
www.gsrc.net



FOR LEASE

CHARLOTTE UPTOWN FREESTANDING CORNER

225 N. Caldwell Street and E. 6th Street



FOR FURTHER DETAILS CONTACT:
JOHN N. JONES, PRESIDENT
Direct: 704-408-8166 | Email: jjones@gsrc.net

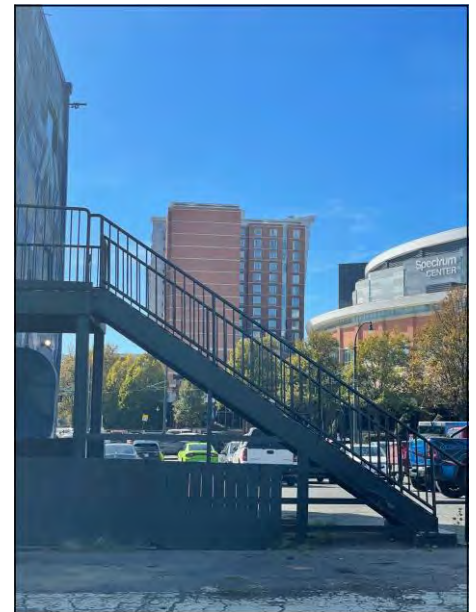
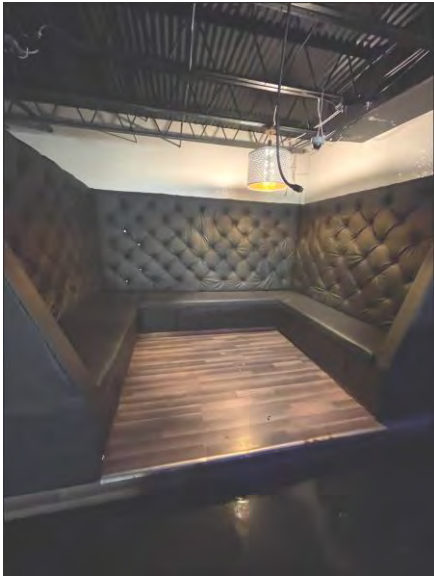
GIBSON SMITH REALTY CO.
1100 Kenilworth Avenue, Suite 200
Charlotte, NC 28204
www.gsrc.net



FOR LEASE

CHARLOTTE UPTOWN FREESTANDING CORNER

225 N. Caldwell Street and E. 6th Street



FOR FURTHER DETAILS CONTACT:
JOHN N. JONES, PRESIDENT
Direct: 704-408-8166 | Email: jjones@gsrc.net

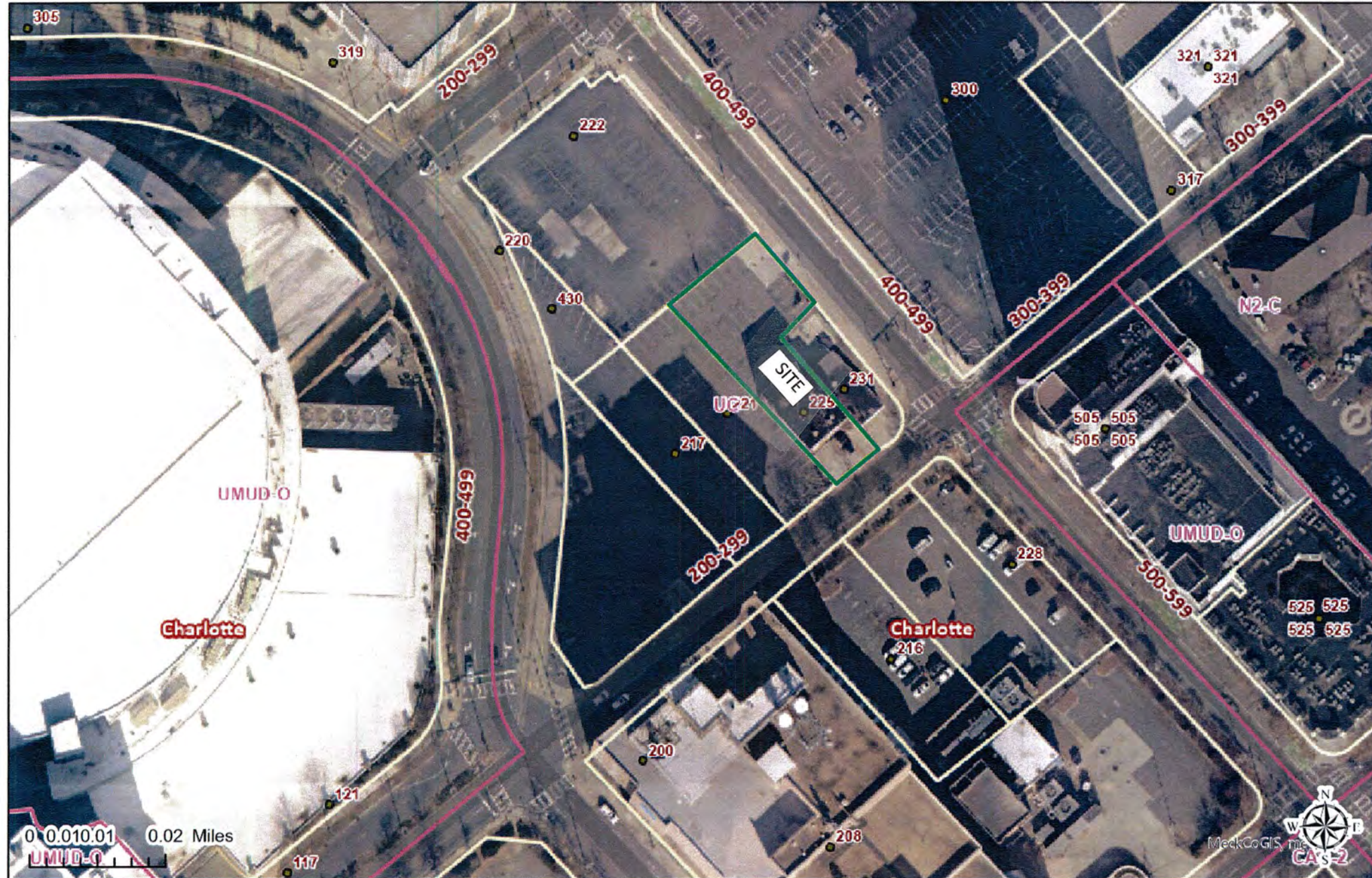
GIBSON SMITH REALTY CO.
1100 Kenilworth Avenue, Suite 200
Charlotte, NC 28204
www.gsrc.net



Polaris Map – Mecklenburg County, North Carolina

225 N. Caldwell Street 6,480 SF +/-

Date Printed: 11/12/2024 9:01 AM



This map or report is prepared for the inventory of real property within Mecklenburg County and is compiled from recorded deeds, plats, tax maps, surveys, planimetric maps, and other public records and data. Users of this map or report are hereby notified that the aforementioned public primary information sources should be consulted for verification. Mecklenburg County and its mapping contractors assume no legal responsibility for the information contained herein.